

2-WAY POWER DIVIDER

SURFACE MOUNT MODEL: SD-1

WIDE BANDWIDTH

2 - 300 MHz

FEATURES:

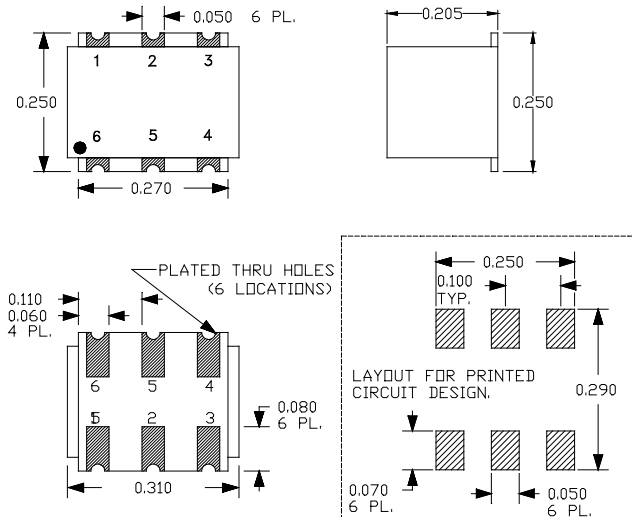
- ▶ Excellent Performance
- ▶ Wide Bandwidth
- ▶ Small Size, Surface Mount
- ▶ Moderate Power
- ▶ Applications: Signal Splitting & Low Power Combining
- ▶ Lead Free RoHS Compliant



SPECIFICATIONS (Rev. C 06/05/07)

Frequency	2 - 300 MHz		
Insertion Loss	Freq. (MHz)	dB (Typ.)	dB (Max.)
	2-20	0.5	0.9
	20-150	0.6	0.8
	150-300	0.8	1.0
Isolation	Freq. (MHz)	dB (Typ.)	dB (Min.)
	2-20	25	20
	20-150	30	20
	150-300	25	20
Phase Unbalance	Freq. (MHz)	Degrees (Max.)	
	2-20	3	
	20-150	4	
	150-300	5	
Amplitude Unbalance	Freq. (MHz)	dB (Max.)	
	2-20	0.4	
	20-150	0.5	
	150-300	0.5	
Input Power	1 Watt (Max.)		
Output Impedance	50 Ohms (Nom.)		
Operating Temperature Range	-40 to +85 °C		

Package # 134



PIN-OUT

Input	Output	Case Gnd.
2	4,6	1,3,5

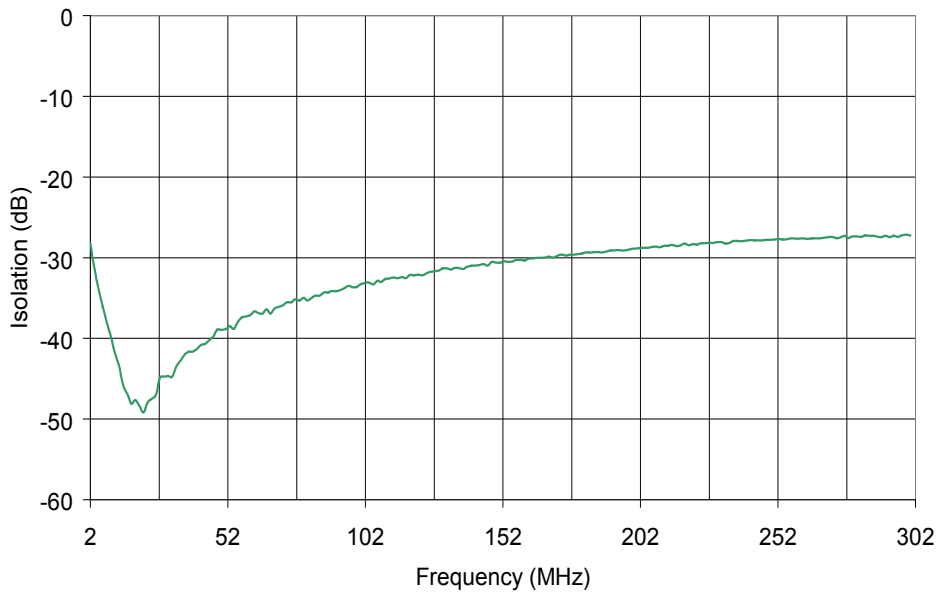
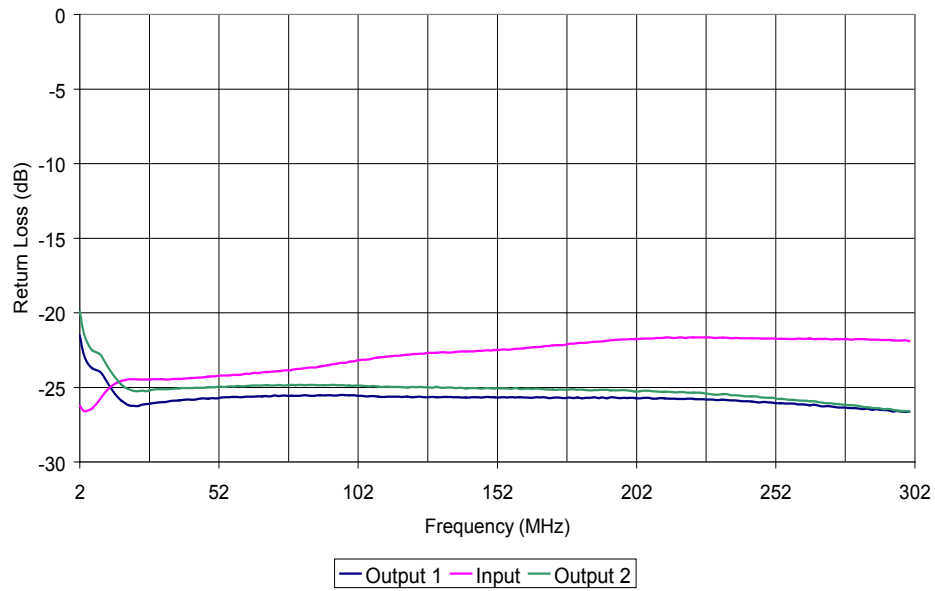
2-WAY POWER DIVIDER

SURFACE MOUNT MODEL: SD-1

WIDE BANDWIDTH

2 - 300 MHz

PERFORMANCE PLOTS



2-WAY POWER DIVIDER

SURFACE MOUNT MODEL: SD-1

WIDE BANDWIDTH

2 - 300 MHz

PERFORMANCE PLOTS

