

Surface Mount Type TACT Switch(TM) > SKSC Series > SKSCLBE010

Series Common Info

1.25mm Height Low-profile Side Push Type (Surface Mount) SKSC Series

| Photo | Dimensions | Land Dimensions | Circuit Diagram | Packing Specifications |

| Soldering Conditions |

PRINT

Side push type

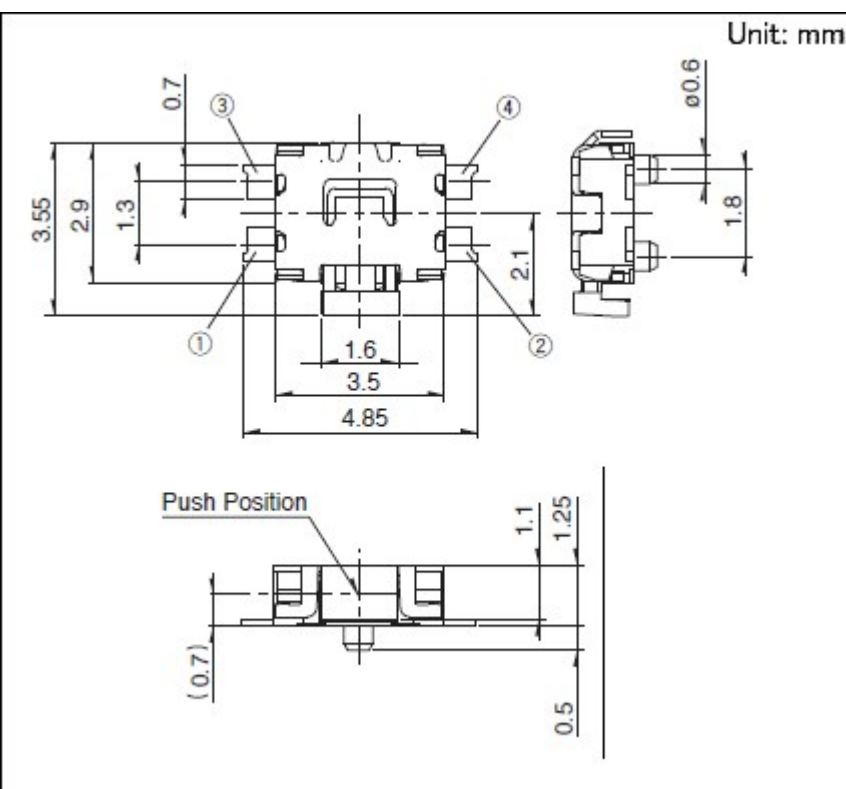
Part number			SKSCLBE010
Type			Surface mount
Operating force			2.2N
Operating direction			Side push
Travel			0.2mm
Operating life (5mA 5V DC)			100,000 cycles
Initial contact resistance			100mΩ max.
Guide bosses			With
Series type			Sharp feeling type
Operating temperature range			-30℃ to +85℃
Rating (max.)			50mA 12V DC
Rating (min.)			10μA 1V DC
Electrical performance	Insulation resistance	100MΩ min. 100V DC for 1min.	
	Voltage proof	100V AC for 1 min.	
Durability	Vibration	10 to 55 to 10Hz/min., the amplitude is 1.5mm for all the frequencies, in the 3 direction of X, Y and Z for 2 hours respectively	
Environmental performance	Cold	-30±2℃ for 96h	
	Dry heat	80±2℃ for 96h	
	Damp heat	60±2℃, 90 to 95%RH for 96h	
Minimum order unit (pcs.)	Japan	5,000	
	Export	5,000	



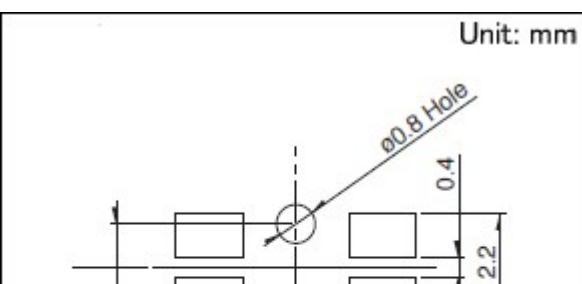
Photo

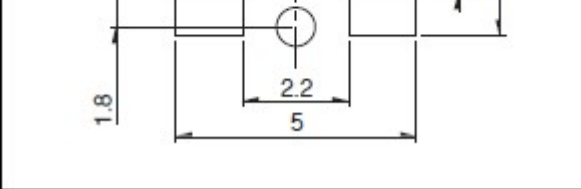


Dimensions



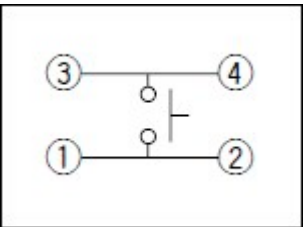
Land Dimensions





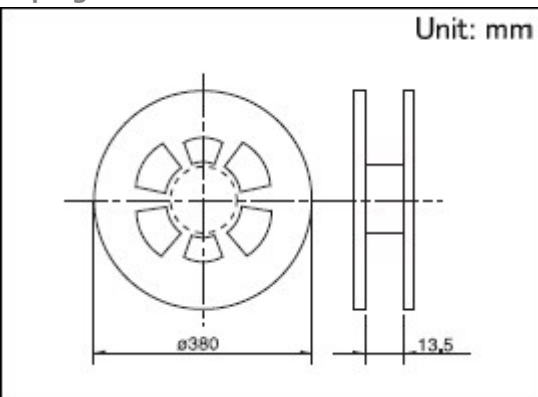
Viewed from switch mounting face

Circuit Diagram



Packing Specifications

Taping



Number of packages 1 reel (pcs.)	5,000
1 case / Japan	50,000
1 case / export packing	50,000
Tape width (mm)	12
Export package measurements (mm)	395×395×205

Soldering Conditions

Condition for Reflow

1. Heating method

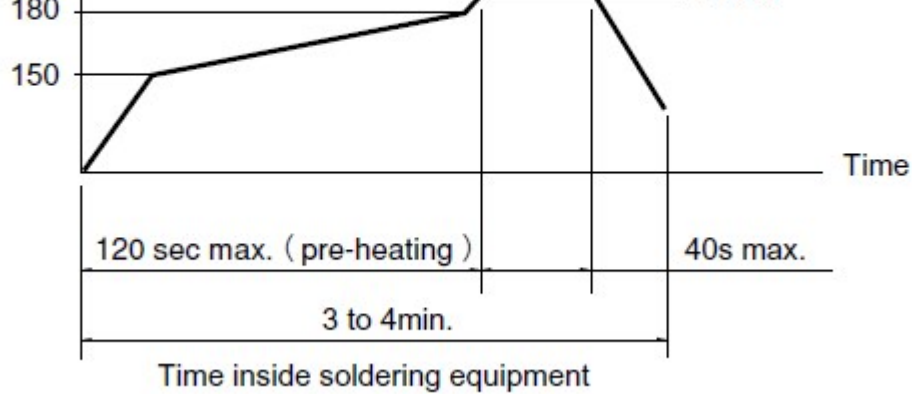
Double heating method with infrared heater.

2. Temperature measurement

Thermocouple 0.1 to 0.2 Φ CA(K) or CC(T) at solder joints (copper foil surface). A heat resisting tape should be used for fix measurement.

3. Temperature profile





(1) The above temperature shall be measured of the top of switch. There are cases where PC board's temperature greatly differs from that of the switch, depending on the material, size, thickness of PC board's and others. Care, should be taken to prevent the switch's surface temperature from exceeding 260°C.

(2) Soldering conditions differ depending on reflow soldering machines. Prior verification of soldering condition is highly recommended.

Manual Soldering

Items	Condition
Soldering temperature	350°C max.
Duration of soldering	3s max.
Capacity of soldering iron	60W max.

1. Consult with us for availability of TACT switch™ washing.
2. Prevent flux penetration from the top side of the TACT switch™.
3. Switch terminals and a PC board should not be coated with flux prior to soldering.
4. The second soldering should be done after the switch returns to normal temperature.

Notes are common to this series/models.

1. This site catalog shows only outline specifications. When using the products, please obtain formal specifications for supply.
2. Please place purchase orders for taping products per minimum order unit (1 reel or a case).
3. For $\phi 330\text{mm}$ diameter reel requirements, please contact us.
4. Please contact us for automotive use products.

Inquiries about Products

[Inquiry](#)