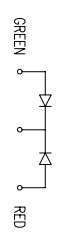
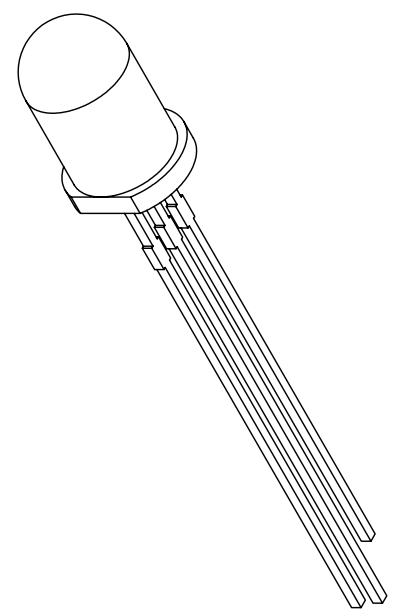
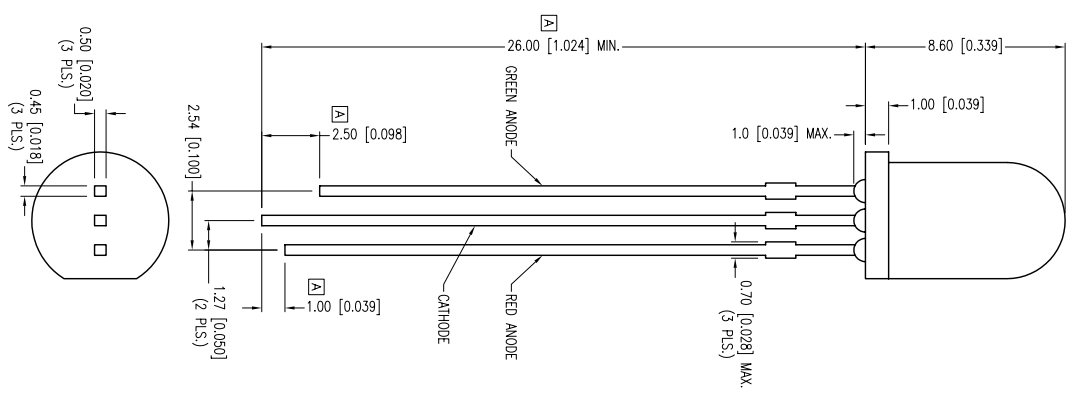
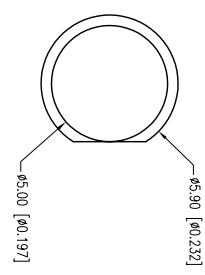


PART NUMBER	SSL-LX50971GW	REV.	A
DATE	08.26.11	REV.	A
E.C.N. #	#11747/10BRDR. & REDRAWN.		



ELECTRO-OPTICAL CHARACTERISTICS $T_0=25^{\circ}\text{C}$

PARAMETER	MIN	TYPE	MAX	UNITS	TEST COND
PEAK WAVELENGTH (R/G)		627/565		nm	
FORWARD VOLTAGE (R/G)		2.0/2.2	2.5	V _f	I _f =100μA
REVERSE VOLTAGE	5.0			V _r	
AXIAL INTENSITY (R/G)		55/40		mcad	I _f =20mA
VIEWING ANGLE		40		2x theta	
EMITTED COLOR:		RED/GREEN			
EPOXY LENS FINISH:		MILKY WHITE			

LIMITS OF SAFE OPERATION AT 25°C

PARAMETER	MAX	UNITS
PEAK FORWARD CURRENT* (R/G)	160/140	mA
STEADY CURRENT (R/G)	30/25	mA
POWER DISSIPATION	75/62.5	mW
DERATE FROM 25°C	-1.2	mW/°C
OPERATING TEMP.	-40 TO +85	°C
STORAGE TEMP.	-40 TO +85	°C
SOLDERING TEMP.*	+260	°C
	3	SEC. MAX.

* $t < 10\text{s}$

*UNLESS OTHERWISE SPECIFIED TOLERANCES PER DECIMAL PRECISION ARE: X=±1 (±0.039), X.X=±0.5 (±0.020), X.XX=±0.25 (±0.010), X.XXX=±0.127 (±0.005), LEAD SIZE=±0.05 (±0.002), LEAD LENGTH=±0.75 (±0.030), MIN.= -0.00, DECIMAL PRECISION MAX.= +0.00, DECIMAL PRECISION

LUMEX
 Creating LED and LCD Solutions Together™
 290 E. HELEN ROAD
 PALATINE, IL 60067-6976
 PHONE: +1.847.359.2790
 FAX: +1.847.359.6538
 WEB: WWW.LUMEX.COM

T-5 (T-1 3/4) LED, BICOLOR RED/GREEN, MILKY WHITE DIFFUSED, .05" LEAD CENTERS, COMMON CATHODE
 THE SPECIFICATIONS MAY CHANGE AT ANY TIME WITHOUT NOTICE DUE TO NEW MATERIALS OR PRODUCT IMPROVEMENT
 CONFIDENTIAL INFORMATION
 THE INFORMATION CONTAINED IN THIS DOCUMENT IS THE PROPERTY OF LUMEX INC. EXCEPT AS SPECIFICALLY AUTHORIZED IN WRITING BY LUMEX INC., THE HOLDER OF THIS DOCUMENT SHALL KEEP ALL INFORMATION CONTAINED HEREIN CONFIDENTIAL AND SHALL PROTECT SAME IN WHOLE OR IN PART FROM DISCLOSURE AND DISSEMINATION TO ALL THIRD PARTIES.

UNCONTROLLED DOCUMENT

DATE:	08.26.11	DRAWN BY:	AB
PAGE:	1 OF 1	CHKD BY:	SS
SCALE:	NTS	APRVD BY:	KF
UNIT:	mm [INCH]		