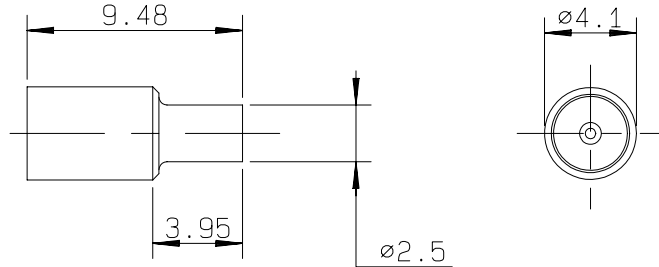
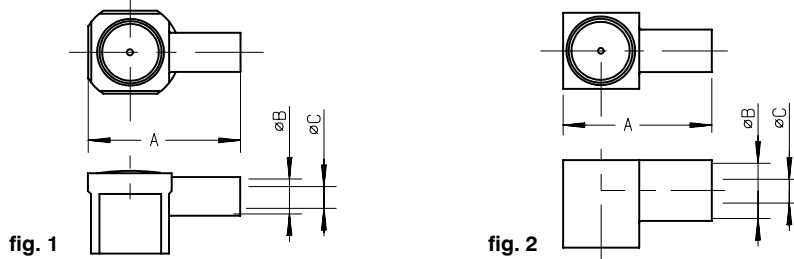


### STRAIGHT PLUGS CRIMP TYPE FOR FLEXIBLE CABLES



cable	part number	imp.	dimensions		captive center contact	finish
			A	B		
2 /50/ S	<b>R209 080 000</b>	50	2	0,6	Yes	Nickel
2 /50/ D	<b>R209 081 000●</b>	50	2	0,3	Yes	Nickel
2 /75/ S	<b>R209 082 000●</b>	50	2	0,6	Yes	Nickel

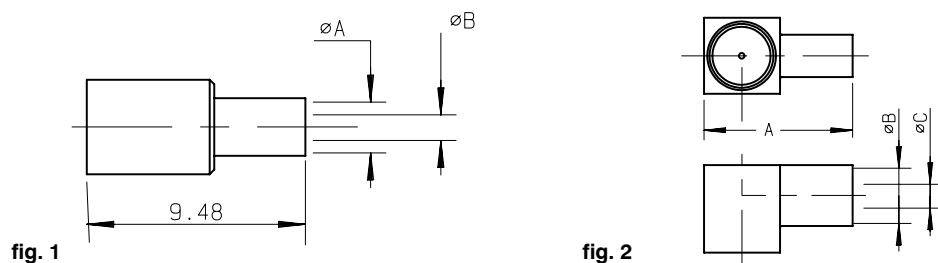
### RIGHT ANGLE PLUGS CRIMP TYPE FOR FLEXIBLE CABLES



Extraction tool : see page 14.

cable	part number	fig.	imp.	dimensions			captive center contact	finish
				A	B	C		
1 /50/ S	<b>R209 351 020</b>	1	50	7,15	1,28	0,65	yes	Nickel
2 /50/ S	<b>R209 353 000</b>	1	50	8,25	2	1,1	yes	Nickel
2 /50/ D	<b>R209 355 000</b>	2	50	8,06	2,25	1,4	yes	Nickel
2 /75/ S	<b>R209 353 000</b>	1	50	8,25	2	1,1	yes	Nickel

### STRAIGHT AND RIGHT ANGLE PLUGS FOR .085 CONFORMABLE CABLE



Extraction tool : see page 14.

cable	part number	fig.	imp.	dimensions			captive center contact	finish
				A	B	C		
.085	<b>R209 083 000●</b>	1	50	2,3	0,65		yes	Nickel
.085	<b>R209 359 000●</b>	2	50	8,05	2,3	1,6	yes	Nickel

● upon request