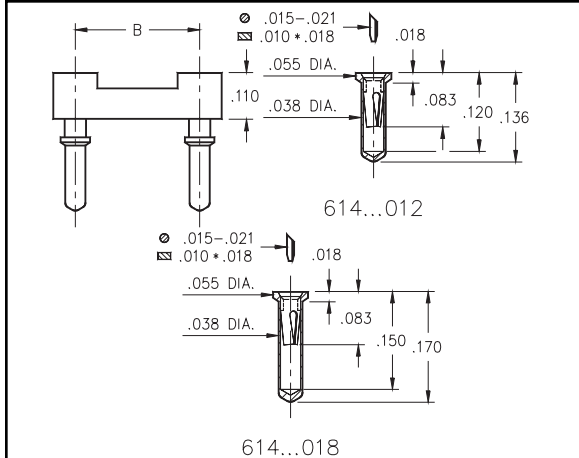


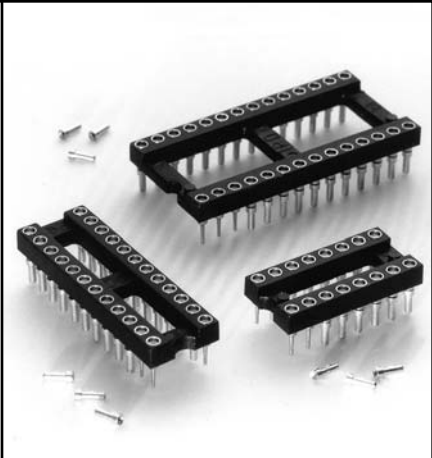


DUAL-IN-LINE SOCKETS
Carrier Type
Ultra Low Profile

Series 614



- Ultra low profile receptacles sit only .018" high above the board.
- Removable plastic carriers can be returned for reloading.
- Hi-Rel, 3-finger #11 BeCu contact is rated at 3 amps. See page 206 for details.
- Uses M-M#0552-1 & 0552-2 receptacles. See page 127 for details.



Total number of pins				Quantity per tube	Ordering Information				
	A	B	C		Length = .136	Length = .170			
					(.039 Min. Mounting Hole)	(.039 Min. Mounting Hole)			
10	0.5	0.2	0.3	40	614-XX-210-31-012	614-XX-210-31-018	<div style="border: 1px solid black; border-radius: 50%; padding: 20px; text-align: center;"> <p>XX= Plating Code See Below</p> </div>		
4	0.2	0.3	0.4	102	614-XX-304-31-012	614-XX-304-31-018			
6	0.3	0.3	0.4	67	614-XX-306-31-012	614-XX-306-31-018			
8	0.4	0.3	0.4	50	614-XX-308-31-012	614-XX-308-31-018			
10	0.5	0.3	0.4	40	614-XX-310-31-012	614-XX-310-31-018			
14	0.7	0.3	0.4	28	614-XX-314-31-012	614-XX-314-31-018			
16	0.8	0.3	0.4	25	614-XX-316-31-012	614-XX-316-31-018			
18	0.9	0.3	0.4	22	614-XX-318-31-012	614-XX-318-31-018			
20	1.0	0.3	0.4	20	614-XX-320-31-012	614-XX-320-31-018			
22	1.1	0.3	0.4	18	614-XX-322-31-012	614-XX-322-31-018			
24	1.2	0.3	0.4	16	614-XX-324-31-012	614-XX-324-31-018			
28	1.4	0.3	0.4	14	614-XX-328-31-012	614-XX-328-31-018			
20	1.0	0.4	0.5	20	614-XX-420-31-012	614-XX-420-31-018			
22	1.1	0.4	0.5	18	614-XX-422-31-012	614-XX-422-31-018			
24	1.2	0.4	0.5	16	614-XX-424-31-012	614-XX-424-31-018			
28	1.4	0.4	0.5	14	614-XX-428-31-012	614-XX-428-31-018			
32	1.6	0.4	0.5	12	614-XX-432-31-012	614-XX-432-31-018			
24	1.2	0.6	0.7	16	614-XX-624-31-012	614-XX-624-31-018			
28	1.4	0.6	0.7	14	614-XX-628-31-012	614-XX-628-31-018			
32	1.6	0.6	0.7	12	614-XX-632-31-012	614-XX-632-31-018			
36	1.8	0.6	0.7	11	614-XX-636-31-012	614-XX-636-31-018			
40	2.0	0.6	0.7	10	614-XX-640-31-012	614-XX-640-31-018			
42	2.1	0.6	0.7	9	614-XX-642-31-012	614-XX-642-31-018			
48	2.4	0.6	0.7	8	614-XX-648-31-012	614-XX-648-31-018			
50	2.5	0.6	0.7	8	614-XX-650-31-012	614-XX-650-31-018			
52	2.6	0.6	0.7	7	614-XX-652-31-012	614-XX-652-31-018			
50	2.5	0.9	1.0	8	614-XX-950-31-012	614-XX-950-31-018			
52	2.6	0.9	1.0	7	614-XX-952-31-012	614-XX-952-31-018			
64	3.2	0.9	1.0	6	614-XX-964-31-012	614-XX-964-31-018			
SPECIFY PLATING CODE XX=								93	99
Sleeve (Pin)								200μ" Sn/Pb	200μ" Sn/Pb
Contact (Clip)								30μ" Au	200μ" Sn/Pb