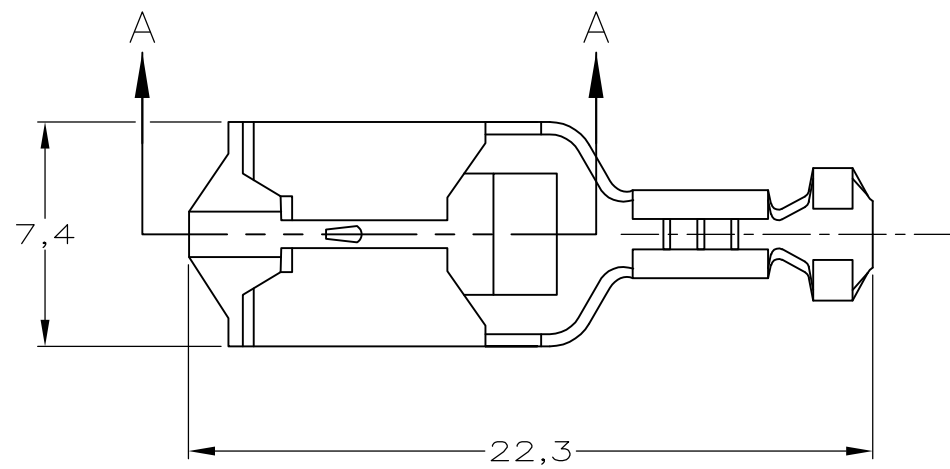
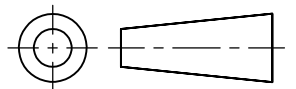


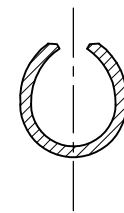
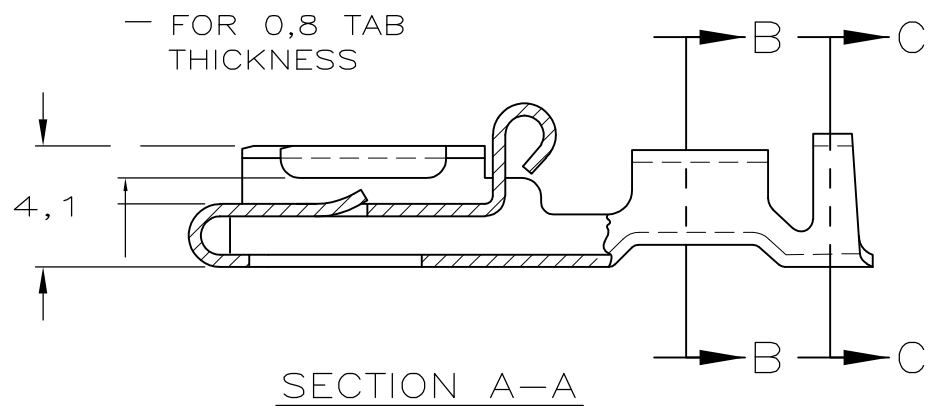
DO NOT SCALE
DIMENSIONS IN mm

METRIC

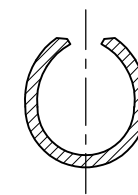
THIRD ANGLE
PROJECTION



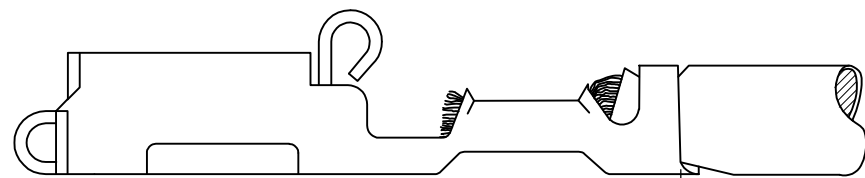
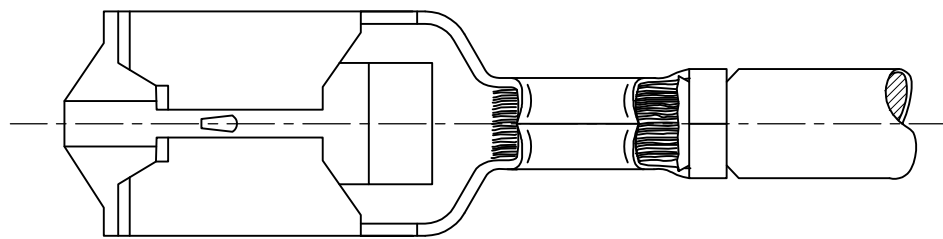
1 OBSOLETE PARTS: OBSOLETE CIS STREAMLINING PER D.RENAUD/D.SINISI



SECTION B-B



SECTION C-C



0,25 MAX CUT OFF

WIRE RANGE :
0,7-2,0 mm²
INSULATION RANGE :
2,4-3,2 DIA.

1 OBSOLETE

STRIP VERSION	FINISH	MATERIAL	PARTNUMBER
-	-	-	-
154718-7	PRE-TINPLATED	PHOSPHORBRONZE	0-341002-7
154718-6	PRE-TINPLATED	BRASS	0-341002-6
154718-4	TINPLATED	PHOSPHORBRONZE	0-341002-4
154718-3	TINPLATED	BRASS	0-341002-3
154718-2	UNPLATED	PHOSPHORBRONZE	0-341002-2
154718-1	UNPLATED	BRASS	0-341002-1

CUSTOMER DRAWING FOR REFERENCE ONLY WILL NOT BE UPDATED © COPYRIGHT 19 - BY AMP HOLLAND B.V. ALL INTERNATIONAL RIGHTS RESERVED. AMP PRODUCTS MAY BE COVERED BY U.S. AND FOREIGN AND/OR PATENTS PENDING. THIS DRAWING IS UNPUBLISHED RELEASED FOR PUBLICATION _____, 19____				
AMP HOLLAND B.V. 's-Hertogenbosch, The Netherlands.				
NAME POSITIVE LOCK RECEPTACLE .250 (6,35) SERIES (LOOSE PIECE)				
01	REVISED PER ECO-09-021510	KK	AEG	07SEP09
LTR.	REVISION RECORD	DR.	CHK.	DATE
DR.:	L.V.D.HEIJDEN	CHK.:	ABIJNEN	APP.:
DATE:	01 MAR 1992	DATE:	-	DATE:
DWG.No. 341002			REV.LTR. 01	SHEET 1 OF 1