

Power supplies
Inverters

# INVERTERS

Input voltage Edc: 5, 12V, for electroluminescent display panel  
**EBX series**

## EBX SERIES

### FEATURES

- Compact, thin design
- High efficient light weight

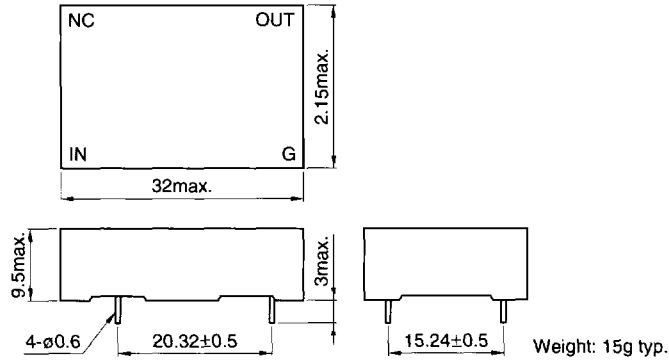
### SPECIFICATIONS

Input voltage Edc	4.5 to 5.5V	10.8 to 13.2V
Operating temperature range	-20 to +55°C	-20 to +55°C
Storage temperature range	-25 to +70°C	-25 to +70°C

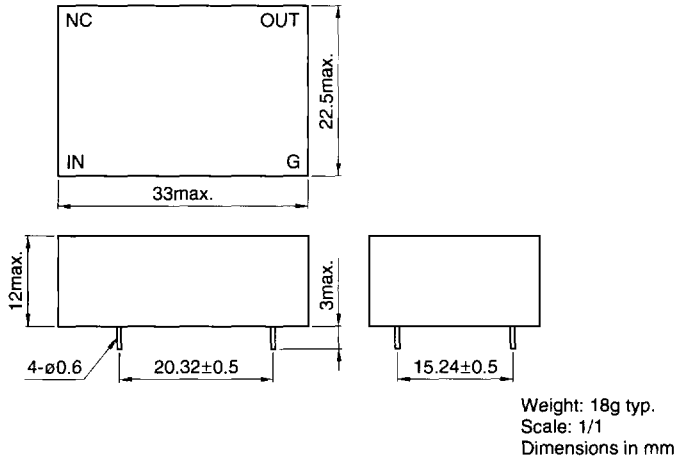
### SHAPES AND DIMENSIONS/CONNECTIONS

#### RESIN MOLDED TYPE

EBX-501 to 505

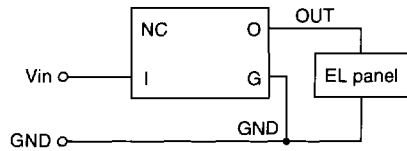
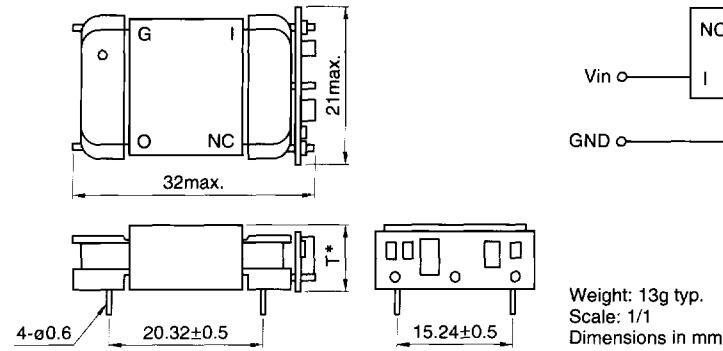


EBX-511 to 513

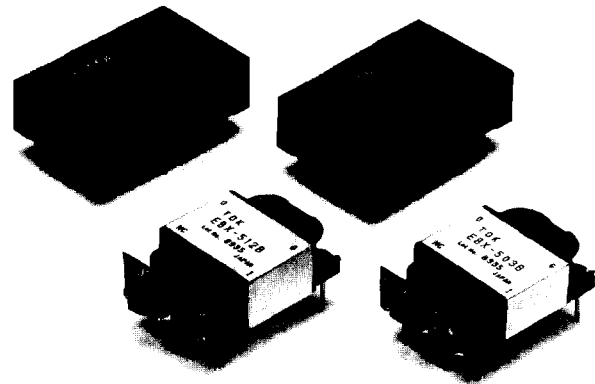


#### OPEN PACKAGE TYPE

EBX-501B to 505B, -511B to 513B



T max.	Part No.
8.5	EBX-501B to 505B
10	EBX-511B to 513B



⚠ Specifications which provide more details for the proper and safe use of the described product are available upon request.

All specifications are subject to change without notice.

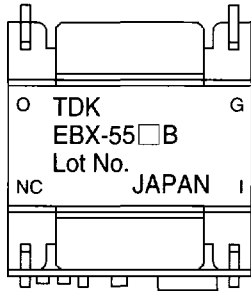
# INVERTERS

Input voltage E<sub>dc</sub>: 5, 12V, for electroluminescent display panel  
EBX series

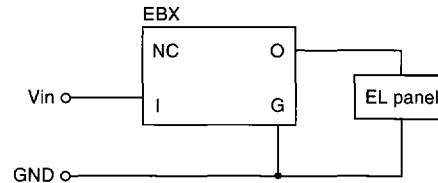
## SHEPES AND DIMENSIONS/CONNECTIONS

### OPEN PACKAGE TYPE

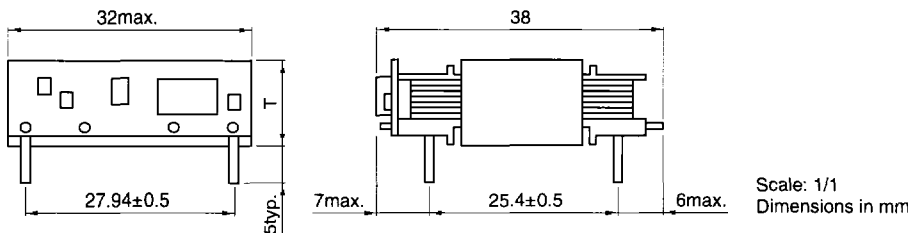
EBX-551B, -521B, -1215B



Part No.	Tmax.	Weight(g)typ.
EBX-551B	14	26
EBX-521B	18	38
EBX-1215B	18	38



I pin: Input terminal  
NC pin: No connection  
O pin: Output terminal  
G pin: Ground terminal



## SPECIFICATIONS

Input voltage E<sub>dc</sub>: 5±0.1V, 12±0.1V Room temperature: 25±1°C

Part No.	Input voltage E <sub>dc</sub> (V)±0.1	Panel size*1 (cm <sup>2</sup> )typ.	Luminance*2 (cd/m <sup>2</sup> )typ.	Input current*3 (mA)max.	Output voltage*3 Erms(V)typ.	Oscillation frequency*3 (Hz)typ.
EBX-501/EBX-501B*4	5	15	30	22	70	450
EBX-502/EBX-502B	5	25	45	50	70	450
EBX-503/EBX-503B	5	35	40	62	70	370
EBX-504/EBX-504B	5	50	40	95	70	450
EBX-505/EBX-505B	5	70	35	120	70	500
EBX-511/EBX-511B	5	20	75	55	100	680
EBX-512/EBX-512B	5	40	80	125	100	550
EBX-513/EBX-513B	5	70	80	210	110	590
EBX-551B	5	160	100	500	110	700
EBX-521B	5	250	100	500	110	700
EBX-1215B	12	250	100	300	110	700

\*1 TDK recommended size. In case of smaller size panel, panel life will be influenced, and in case of bigger panel the luminance will be fallen down.

\*2 This value was measured by TDK standard panel. The luminance value will be differ from the panel type.

\*3 The value measured with dummy load.

\*4 B at the end of the part No. are open package type models.

## PRECAUTIONS

- Soldering conditions  
DIP: 260±5°C, for 10 seconds
- Cleaning conditions  
Solvent: IPA

