
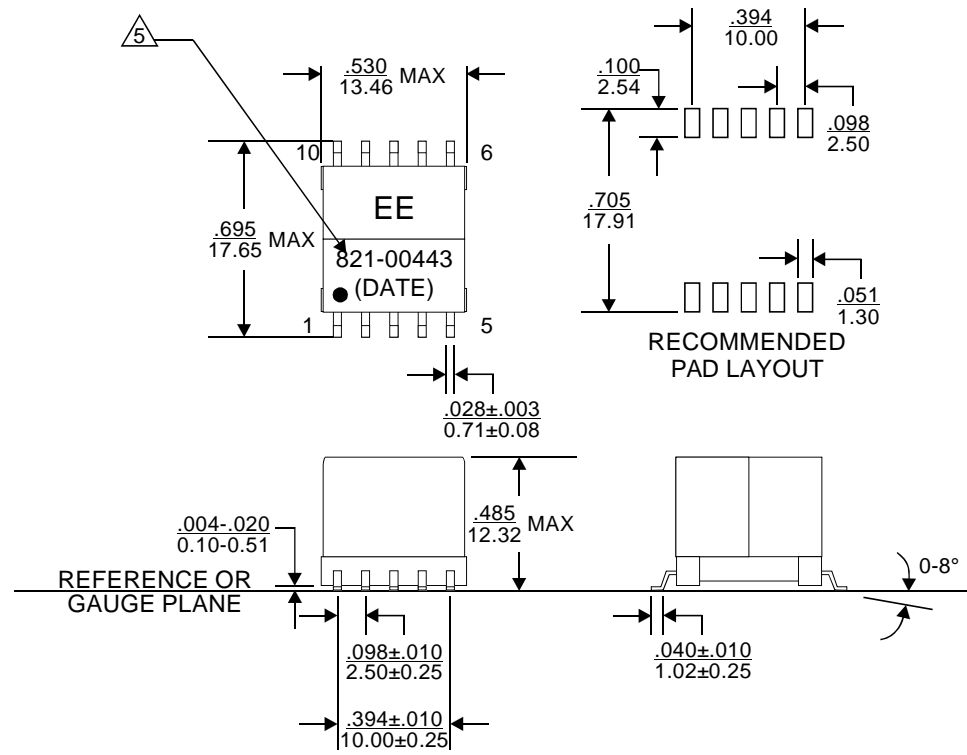


REVISIONS			
REV.	DESCRIPTION	ECN NO.	DATE
01	FIRST RELEASE FOR RFQ#D2010-7505	N/A	05/27/10


PAGE 4 IS FOR INTERNAL ONLY

PART NUMBER		PART DESCRIPTION		TITLE										
821-00443		Standard version, with Lead(Pb)		TRANSFORMER, ISDN U-INTERFACE, SMT, 10 PIN										
821-00443F		RoHS compliant per EU Directive 2002/95/EC(without exemption of solder content)		TRANSFORMER, ISDN U-INTERFACE, SMT, 10 PIN										
<p align="center"><u>WARNING !</u></p> <p>ALL SHEETS OF THIS DOCUMENT ARE CONTROLLED DOCUMENTATION AND ARE NOT TO BE RELEASED OUTSIDE OF E&E OR ITS SUB-CONTRACTORS WITHOUT AUTHORIZATION.</p>	<p>UNLESS OTHERWISE SPECIFIED, DIMENSIONS ARE IN INCH/mm.</p> <p align="center"><u>TOLERANCE ARE:</u></p> <table border="0"> <tr> <td>INCH</td> <td>mm</td> <td>ANGLE</td> </tr> <tr> <td>.XXX ± .005</td> <td>.XX ± .13</td> <td>X.X ± 0.3</td> </tr> <tr> <td>.XX ± .02</td> <td>.X ± .5</td> <td>X. ± 1</td> </tr> </table>	INCH	mm	ANGLE	.XXX ± .005	.XX ± .13	X.X ± 0.3	.XX ± .02	.X ± .5	X. ± 1	APPROVALS	DATE	 E & E Magnetic Products Ltd.	
		INCH	mm	ANGLE										
		.XXX ± .005	.XX ± .13	X.X ± 0.3										
		.XX ± .02	.X ± .5	X. ± 1										
		DRAWN BY												
PROJ. ENG	W.P. CHENG	05/27/10		DRAWING NO./MODEL	REV									
APPROVED BY	W.P. CHENG	05/27/10		821-00443F	01									
Q.A.	V. TSUI	05/27/10		SCALE	PAGE OF									
	C.M. TSUI	05/27/10		DO NOT SCALE	1 OF 4									



MECHANICAL OUTLINE

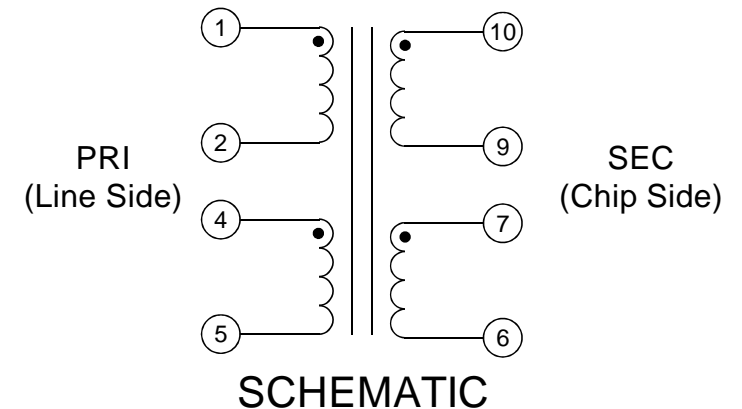
- Dimensions are specified in $\frac{\text{inches}}{\text{mm}}$ with higher precedence in inch.
 - Unless otherwise specified, all tolerances are $\pm \frac{.010}{0.25}$.
 - Coplanarity: $\frac{.005}{0.13}$ max.
 - "(DATE)" includes at least manufacturing date code (in YYWW format) plus two character country code.
- 5 For RoHS compliant version, 821-00443F, the part will be marked with "821-00443F", instead of "821-00443".

 E & E Magnetic Products Ltd.		
DRAWING NO./MODEL		REV
821-00443F		01
SCALE	PAGE	OF
DO NOT SCALE	2	4

ELECTRICAL SPECIFICATION @25°C:

PARAMETERS	UNIT	LIMITS
Turns Ratio(1-2-4-5):(10-9-7-6)	-	2CS : 1CS ± 2%
Polarity	-	Per Schematic
Ls(1-5)@10kHz, 0.10Vrms, short 2+4@0-50mA	mH	13.5 - 16.5
DCR(1-5),short2+4	Ω	7.00 max
DCR(10-6), short 9+7	Ω	3.50 max
Return Loss@10KHz-25KHz	dB	20.0 min
Longitudinal Balance@281Hz-40KHz	dB	55.0 min
Hipot(1-2-4-5):(10-8-6)	Vrms	1500 min

6. Operating temperature range: 0°C to +70°C.



E & E Magnetic Products Ltd.

DRAWING NO./MODEL

821-00443F

REV

01

SCALE

DO NOT SCALE

PAGE

3

OF

4