

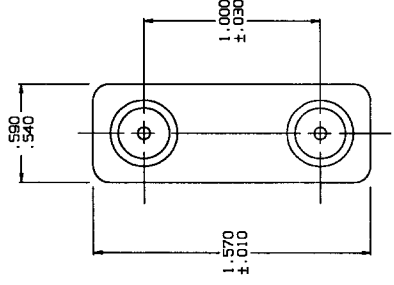
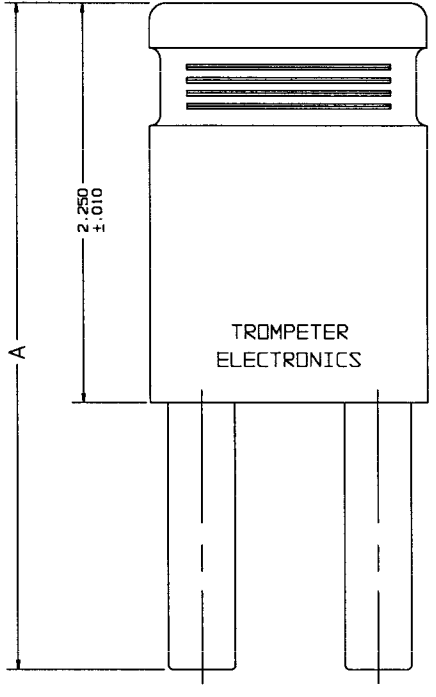
RED INDICATES ORIGINAL

REVISIONS		REV	ED	DESCRIPTION	DWN	APPROVED	SH 1
H	12660			CHANGED CASE COLOR TO GREEN/BLACK FDR -7 SEE ECD	R L	<i>[Signature]</i>	12/25/68

ALL DIMENSIONS UNLESS OTHERWISE SPECIFIED ARE IN INCHES. DIMENSIONS IN PARENTHESES ARE FOR REFERENCE ONLY. DIMENSIONS IN RED INDICATE ORIGINAL DIMENSIONS. DIMENSIONS IN BLACK INDICATE DIMENSIONS AS SHOWN. DIMENSIONS IN GREEN INDICATE DIMENSIONS AS SHOWN. DIMENSIONS IN VIOLET INDICATE DIMENSIONS AS SHOWN. DIMENSIONS IN WHITE INDICATE DIMENSIONS AS SHOWN. DIMENSIONS IN BLACK INDICATE DIMENSIONS AS SHOWN. DIMENSIONS IN RED INDICATE DIMENSIONS AS SHOWN. DIMENSIONS IN GRAY INDICATE DIMENSIONS AS SHOWN. DIMENSIONS IN GREEN/BLACK INDICATE DIMENSIONS AS SHOWN.

DASH NO	MODEL NO	IMPEDANCE VALUE	CASE COLOR	A	DIM
-1	LPL-50	50 OHMS	GREEN	3.765	3.765
-W1	LPLW-50			3.458	3.458
-2	LPL-75	75 OHMS	VIOLET	3.765	3.765
-W2	LPLW-75			3.458	3.458
-3	LPL-93	93 OHMS	WHITE	3.765	3.765
-W3	LPLW-93			3.458	3.458
-4	LPL-4		BLACK	3.765	3.765
-W4	LPLW-4			3.458	3.458
-5	LPL-5		RED	3.765	3.765
-W5	LPLW-5			3.458	3.458
-6	LPL-6		GRAY	3.765	3.765
-W6	LPLW-6			3.458	3.458
-7	LPL-7		GREEN/BLACK	3.765	3.765

INCH	MM
.010	0.25
.030	0.76
.540	13.72
.590	14.99
1.000	25.40
1.570	39.68
2.250	57.15
3.458	87.93
3.765	95.63



-W2, -W4-75, -W5-75 & -W6-75 SHOWN

- 6 50 Ω DOUBLE SHIELDED RG223-M17/167-00001
- 5 IMPEDANCE VALUE OF -4 THRU -W6, MAY BE -50, -75, OR -93 (OHMS). EXAMPLE: 1-0338-4-50, -4 -75, ETC
- 4 PREFIX "W" DENOTES AT&T TYPE. ALL OTHERS RCA
- 3 COAXIAL LARGE SPACING STANDARD SIZE LOOPING PLUG
- 2 FINISH: BARRELS, TFS-1A OR TFS-1U (NICKEL) CASE (SEE CHART)
- 1 ALL DIMENSIONS ARE IN INCHES

QTY	DESCRIPTION	PART NUMBER	ITEM
1	TROMPETER ELECTRONICS, INC.	LPL / LPLW	
155-0572	MATERIAL	DRAWING NO.	REV
155-0552	14949	1-0338	H
NEXT ASSY	SCALE: 1:1	DATE: 6-12-69	SHEET: 1 OF 2

TO UNLESS SPECIFIED	DATE	BY	APP'D
XXX-2-080	11/21/68		
ANGLES	12/22/68		
DWN	12/22/68		
CHK	12/22/68		
ENGR	12/22/68		