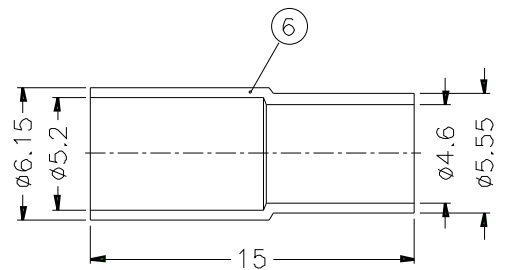
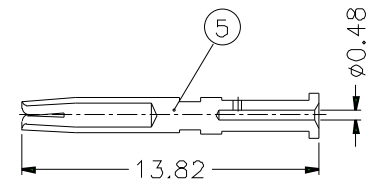
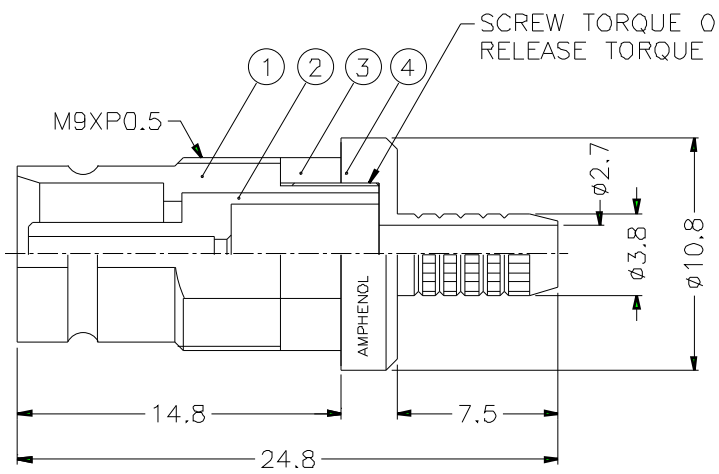
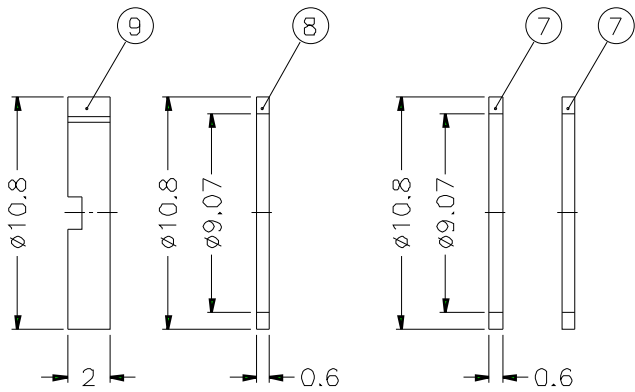
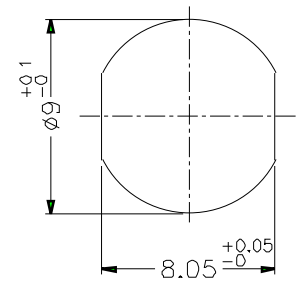
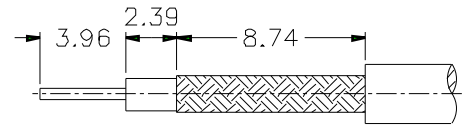
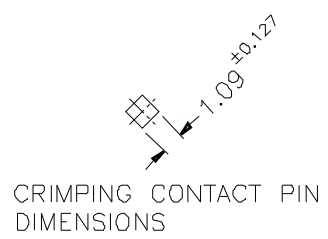


1 2 3 4 5 6 7 8

REVISIONS		
ISS	ZONE	DESCRIPTION\PER REQUEST\DATE

CRIMPING FERRULE DIMENSION: $\phi 5.2^{+0.127}$
 PANEL THICKNESS:
 1. 1.2mm(GROUNDED OR ISOLATED)
 2. 3mm(ONLY GROUNDED, WITHOUT WASHERS
 ⑦ AND ⑧)
 -PACKAGING IN BAG WITH COMMERCIAL PART NUMBER
 AND DATE CODE



9	NUT	BRASS	NICKEL	1	
8	WASHER	BRASS	NICKEL	1	
7	ISOLATING WASHER	EPOXY GLASS -FR4 TYPE	NATURAL	2	
6	FERRULE	COPPER	NICKEL	1	
5	CONTACT PIN	BEUC	GOLD	1	
4	BARREL	BRASS	NICKEL	1	
3	RING	PSU,20% G.F.	GREEN	1	
2	INSULATOR	TEFLON	NATURAL	1	
1	BODY	BRASS	GOLD	1	
NO.	DESCRIPTION	MATERIAL	FINISH	Q'TY	DRAWING NO.

DIMENSIONS ARE IN MILLIMETERS				PART NO. 156 931 750T	
				APPROVED	DATE 10-11-01'
				CHECKED	DATE 10-11-01'
				DRAWN	DATE 10-11-01'
				FILE NO.	

Amphenol

TITLE 1.6/5.6 75Ω BULKHEAD MOUNT JACK
 (FOR CEC BV 75-2 CABLE)

DRAWING NO. _____

ITEM NO. _____

1 2 3 4 5 6 7 8

F

E

D

C

B

A

F

E

D

C

B

A