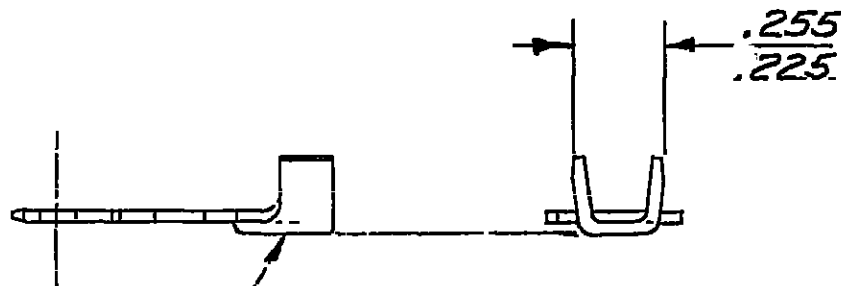
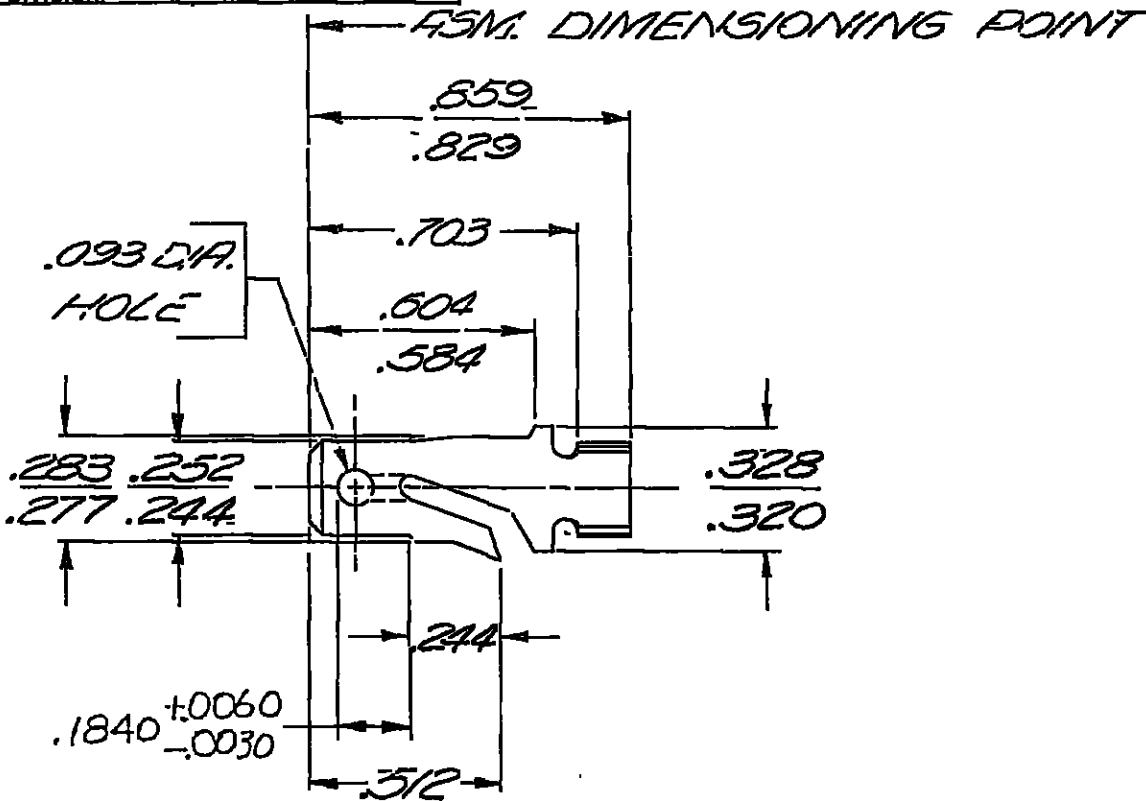


PACKARD ELECTRIC DIVISION
GENERAL MOTORS CORPORATION
WARREN, OHIO

DO NOT SCALE

THIS DRAWING AND DESIGN HEREON CONSTITUTES A PROPRIETARY DESIGN OF PACKARD ELECTRIC DIVISION AND IS NOT TO BE DUPLICATED OR REPRODUCED WITHOUT AUTHORITY OF PACKARD ELECTRIC DIVISION.



CONDUCTOR WINGS FOR
(2)-2.0MM² OR (1) 50-3.0MM²
CABLES

C02D1713

OUTLINE DING

PART NO		2977994		SIZE	A	
DATE	SYN	REVISION RECORD	C/N NO			
01SE82		ALL PREVIOUS DATA				
		REMOVED FROM REV.				
		COL THRU REV. "AY"				
		PICTURE REVISED	82155			
01AU83	AZ	REV. SYM. ADVANCED	86126			
05DE05	AZ4	REMOVED DIM (1 PLC) AND				
		ADDED DIM .1840 +.0060/-0.0030	274727			
14NO06	AZ5	UPDATED PDM ATTRIBUTES	286735			
CODE NO		6900		TOLERANCE UNLESS OTHERWISE SPECIFIED		
				DECIMAL ±.005		
				FRACTIONAL		
				ANGULAR		
DWG DATE	SCALE	DR				
7-16-62	NONE	JENGLER				
ROUTING		CK				
DEPT		7-16				
OUTST		APPR				
REFERENCE		APPR				
2962864 "D" SIZE-SHT #2		7-16-62				
MATERIAL SPEC		APPR				
.032 THK SAE CA 210 BRASS		R O'Leary				
TIN PLATED			CODE NO			
NAME	TERMINAL - MALE - '56 SERIES					
PART NO	2977994				SIZE	A