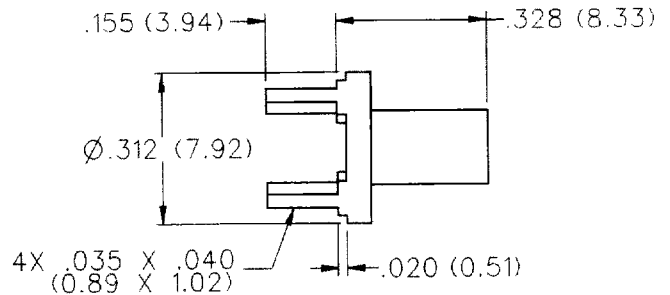


INCHES (MILLIMETERS)
CUSTOMER DRAWINGS AVAILABLE UPON REQUEST

Flexible Cable - Straight Crimp Type



CABLE TYPE	GOLD PLATED	NICKEL PLATED
RG-178/U, 196	142-0002-201	142-0002-206
RG-161/U, 174, 179, 187, 188, 316	142-0003-201	142-0003-206
RG-316 DS, RG-188 DS	142-0004-201	142-0004-206
RG-58/U, 141, 303	142-0007-201	142-0007-206

Assembly instructions page 159.

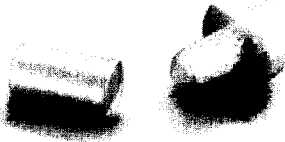
Mounting hole layout

Part Number 142-0002-XXX, 142-0003-XXX,

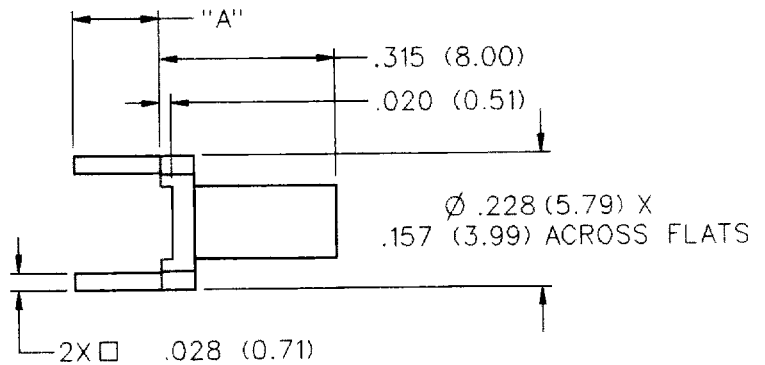
142-0004-XXX figure 3 Page 163.

Part Number 142-0007-XXX figure 4 page 163.

Flexible Cable - Straight Crimp Type



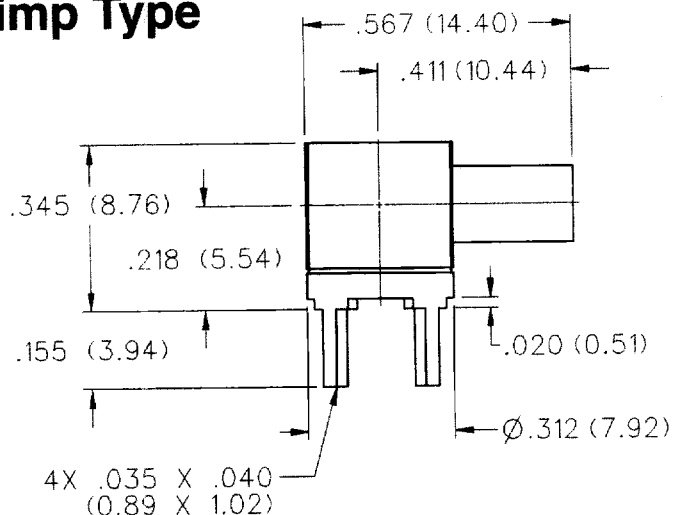
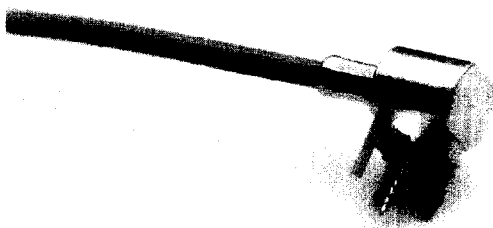
CABLE TYPE	GOLD PLATED	NICKEL PLATED	DIMENSION "A"
RG-178/U, 196	142-0002-211	142-0002-216	.155 (3.94)
	142-0002-221	142-0002-226	.110 (2.79)
RG-316/U, 188, 174, 161, 179, 187	142-0003-231	142-0003-236	.155 (3.94)
	142-0003-241	142-0003-246	.110 (2.79)
RG-316 DS, 188 DS	142-0004-211	142-0004-216	.155 (3.94)
	142-0004-221	142-0004-226	.110 (2.79)



Mounting hole layout figure 16 page 164.

Assembly instructions page 159.

Flexible Cable - Right Angle Crimp Type



CABLE TYPE	GOLD PLATED	NICKEL PLATED
RG-178/U, 196	142-0002-301	142-0002-306
RG-161/U, 174, 179, 187, 188, 316	142-0003-301	142-0003-306
RG-316 DS, 188 DS	142-0004-301	142-0004-306

Assembly instructions page 160.

Mounting hole layout figure 3 page 163.

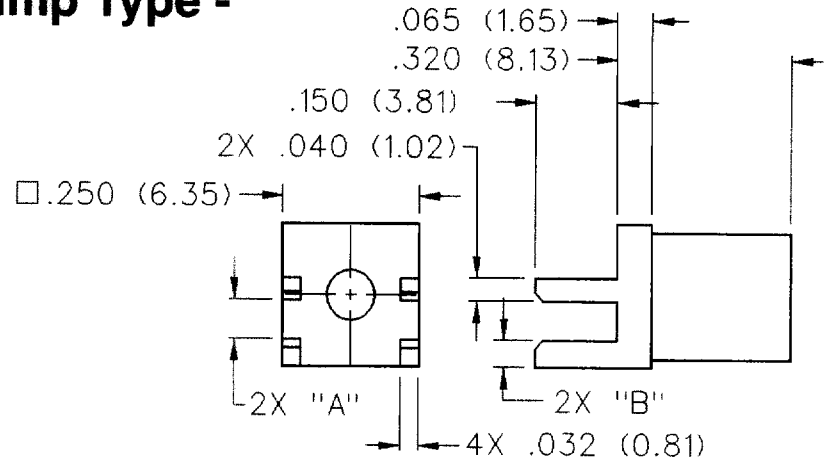
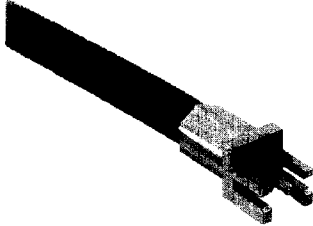
Shielded Cable Termination

PC Mount



INCHES (MILLIMETERS)
CUSTOMER DRAWINGS AVAILABLE UPON REQUEST

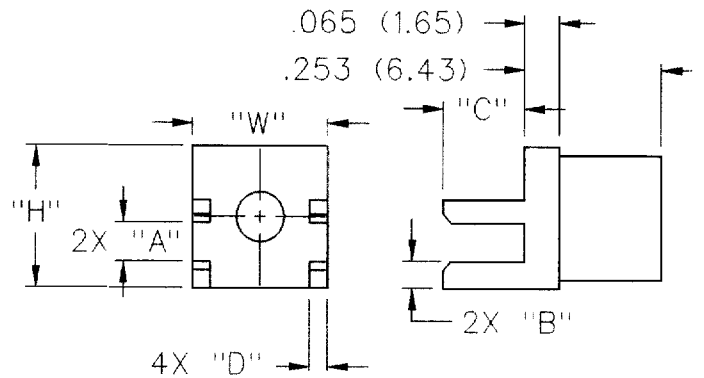
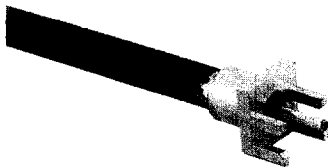
Flexible Cable Straight Crimp Type - End Launch



CABLE TYPE	BOARD THICKNESS	GOLD PLATED	"A"	"B"
RG178/U, 196	0.062 (1.57)	142-0002-801	0.068 (1.73)	0.050 (1.27)
RG316/U, 188, 174, 161, 179, 187	0.062 (1.57)	142-0003-801	0.068 (1.73)	0.046 (1.02)
RG316 DS/ 188 DS, 179 DS, 187 DS	0.062 (1.57)	142-0004-801	0.068 (1.73)	0.046 (1.02)
RG58/U, 141, 303	0.062 (1.57)	142-0007-801	0.068 (1.73)	0.037 (1.65)
RG142/U, 55, 223, 400	0.062 (1.57)	142-0008-801	0.068 (1.73)	0.037 (1.65)
RG178/U, 196	0.047 (1.19)	142-0002-811	0.053 (1.35)	0.065 (1.65)
RG316/U, 188, 174, 161, 179, 187	0.047 (1.19)	142-0003-811	0.053 (1.35)	0.061 (1.55)
RG316 DS/ 188 DS, 179 DS, 187 DS	0.047 (1.19)	142-0004-811	0.053 (1.35)	0.061 (1.55)
RG58/U, 141, 303	0.047 (1.19)	142-0007-811	0.053 (1.35)	0.052 (1.32)
RG142/U, 55, 223, 400	0.047 (1.19)	142-0008-811	0.053 (1.35)	0.052 (1.32)

Assembly instructions page 161.
Cable assembly tools page 126.

Semi-Rigid Straight Solder Type - End Launch



CABLE TYPE	BOARD THICKNESS	GOLD PLATED	"A"	"B"	"W"	"H"	"C"	"D"
.086 Semi-Rigid	0.062 (1.57)	142-0093-801	0.068 (1.73)	0.046 (1.42)	0.250 (6.35)	.250 (6.35)	.150 (3.81)	.032 (0.81)
.141 Semi-Rigid	0.062 (1.57)	142-0094-801	0.068 (1.73)	0.070 (1.78)	0.375 (9.52)	.312 (7.92)	.187 (4.77)	.040 (1.02)
.250 Semi-Rigid	0.062 (1.57)	142-0096-801	0.068 (1.73)	0.053 (1.35)	0.375 (9.52)	.312 (7.92)	.187 (4.77)	.050 (1.27)

Assembly instructions page 162. Cable assembly tools page 126.