

1.4-inch (36 mm) 5 x 8 Dot Matrix LED Display D-N914, D-K914, DEGK914 and DEGN/K9141 Series

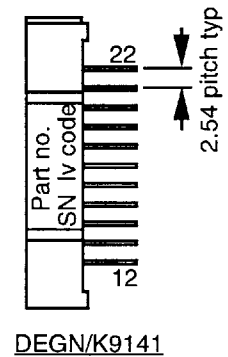
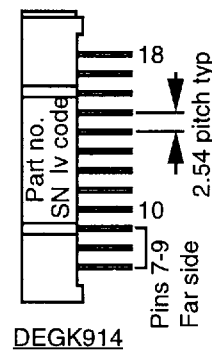
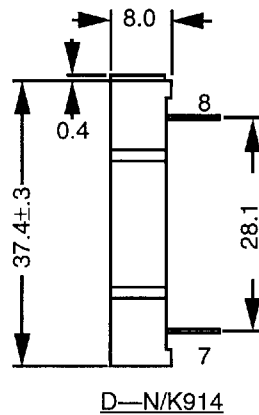
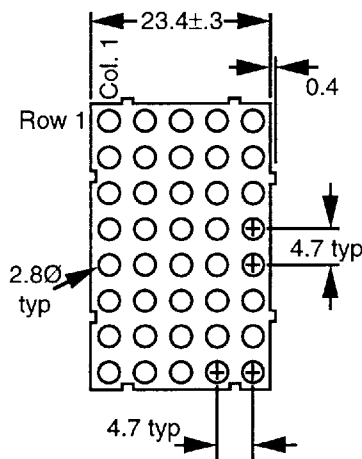


The 1.4-inch 5 x 8 dot matrix is designed for applications where multiple rows of alphanumeric information must be displayed. It can also be arranged in 16-row groups for displaying Chinese characters and in larger formats for graphics.

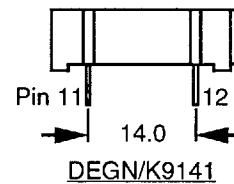
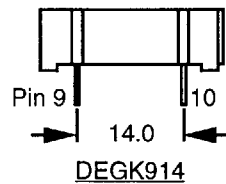
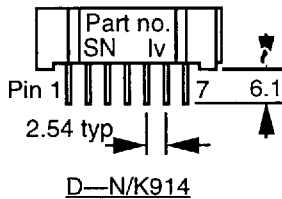
SELECTION GUIDE:

Color	E Red	X Red	Green	Yellow
Wavelength	635 nm	660 nm	565 nm	585 nm
Iv(mcd/dot) *	3.5	10.0	4.0	3.5
Column Anode	DEN914	DXN914	DGN914	DYN914
Column Cathode	DEK914	DXK914	DGK914	DYK914

MECHANICAL DIMENSIONS:



E/G Bi-Color
635/565 nm
3.5/4.0
DEGN9141
DEGK914, DEGK9141



PIN ASSIGNMENTS:

PIN NO.	D-N914	D-K914	DEGK914	DEGN9141	DEGK9141	PIN NO.	DEGK914	DEGN9141	DEGK9141
1	- R6	+ R6	- C2e	- R1g	+ R1g	15	+ R3	- R6g	+ R6g
2	- R8	+ R8	+ R2	- R2e	+ R2e	16	- C3e	- R5e	+ R5e
3	+ C2	- C2	+ R4	+ C2	- C2	17	- C4e	+ C5	- C5
4	+ C3	- C3	- C2g	- R3g	+ R3g	18	+ R1	- R4g	+ R4g
5	- R5	+ R5	- C1g	- R4e	+ R4e	19		+ C3	- C3
6	+ C5	- C5	+ R6	+ C1	- C1	20		- R3e	+ R3e
7	- R7	+ R7	+ R8	- R5g	+ R5g	21		- R2g	+ R2g
8	- R3	+ R3	- C1e	+ C3	- C3	22		- R1e	+ R1e
9	- R1	+ R1	+ R7	- R6e	+ R6e				
10	+ C4	- C4	- C5e	- R7g	+ R7g				
11	+ C3	- C3	+ R5	- R8e	+ R8e				
12	- R4	+ R4	- C3g	- R8g	+ R8g				
13	+ C1	- C1	- C4g	- R7e	+ R7e				
14	- R2	+ R2	- C5g	+ C4	- C4				

e = E red
g = G green

* Specifications subject to change without notice. All dimensions are in mm±0.3 unless stated otherwise.

* Iv typ. measured @ If = 48 mA, 1/8 duty. All pins are 0.5 mmØ unless stated.