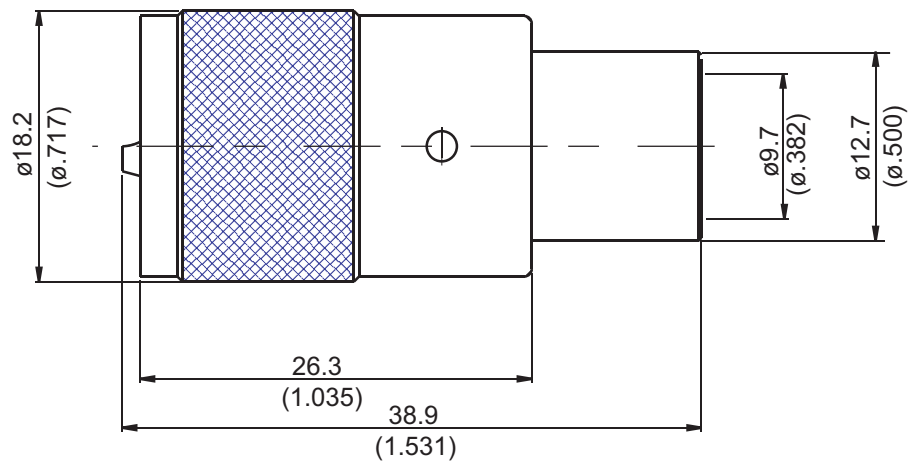


UHF3200-0214

UHF Plug Clamp



Parts	Material	Plating(Micro-inch)
Contact Pin	Brass	Gold 3 Over Nickel 50 Over Copper 50
Insulator	Teflon	
Body	Brass	Tin-Zinc-Copper-Alloy 100 Over Copper 50
Coupling Nut	Brass	Tin-Zinc-Copper-Alloy 100 Over Copper 50

Weight: 21.63 g  
Suitable Cables: RG214

This part number complies with RoHS.

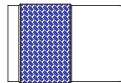
Notice: JYEBAO reserves the right to make modifications deemed appropriate.

## CABLE ASSEMBLY INSTRUCTION

UHF3200-0214

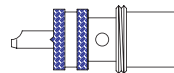
JYE BAO CO., LTD.

A



NUT

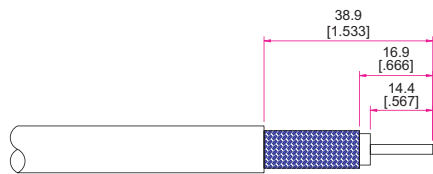
B



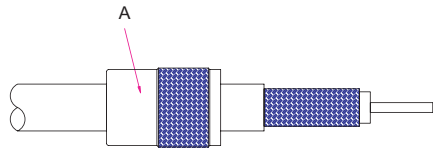
CONTACT PIN + BODY

DIAGRAM

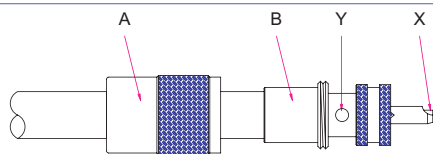
ASSEMBLY INSTRUCTION



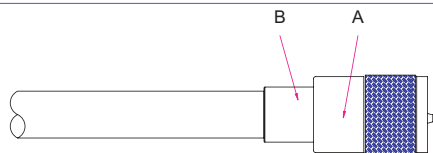
Step 1: STRIP AS SHOWN .



Step 2: SLIDE NUT " A " OVER CABLE.



Step 3: PUT PREPARED CABLE INTO " B " AND SOLDER IN " X " AND IN " Y " .



Step 4: FINALLY SCREW " A " ON " B " .

This part number complies with RoHS.

Notice: JYEBAO reserves the right to make modifications deemed appropriate.