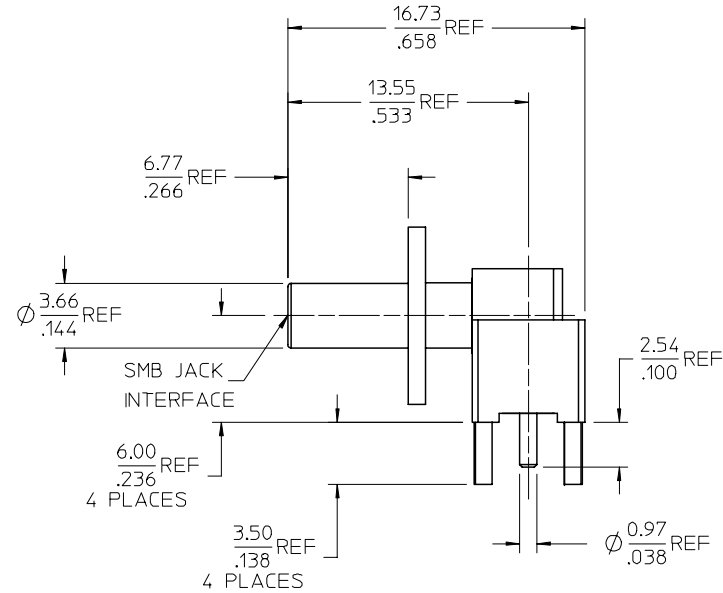
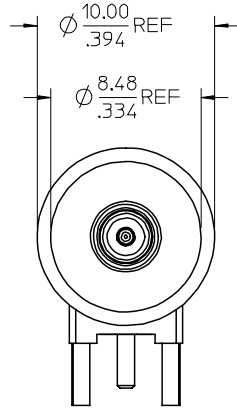
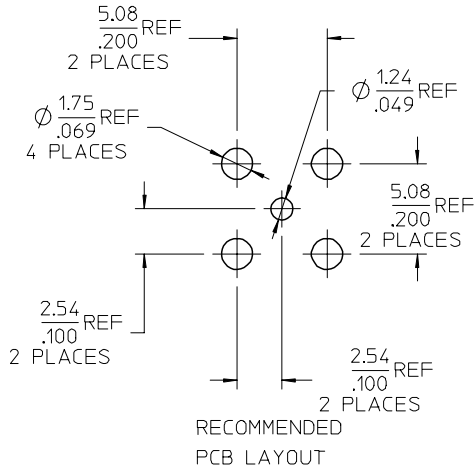
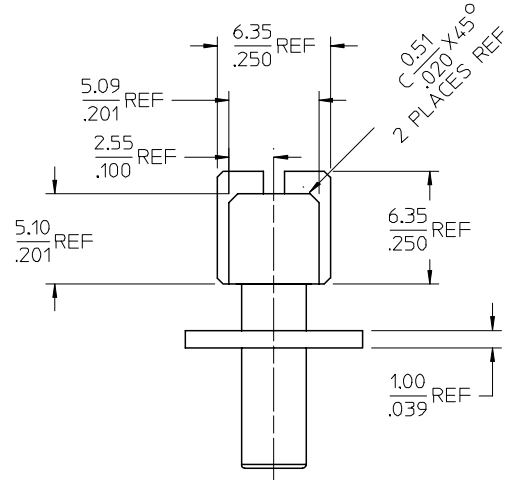
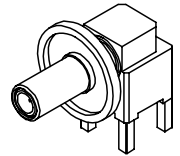


MATERIALS AND FINISHES

BODY BRASS
PLATED GOLD

CENTER CONTACT BRASS
PLATED GOLD/NICKEL

INSULATOR TEFLON



PART # 73404-2060

CHG: PLATING ON
BODY WAS NICKEL.

FC NO: URF2007-0190
DRAWN: ARROBERTSON 2006/11/02
CHKD: 2006/11/02
APPR: JIM ENEER 2006/11/02

QUALITY SYMBOLS
▽=0
▽=0

GENERAL TOLERANCES (UNLESS SPECIFIED)	
mm	INCH
4 PLACES ± .005	± .0004
3 PLACES ± .003	± .0002
2 PLACES ± .002	± .0001
1 PLACE ± .001	± .00005
ANGULAR ± 2 °	

DRAFT WHERE APPLICABLE
MUST REMAIN
WITHIN DIMENSIONS

DIMENSION STYLE	
MM/IN	DATE
DRAWN BY TEF	2006/03/20
CHECKED BY SSS	2006/03/20
APPROVED BY JW	2006/03/20
MATERIAL NO. 734042060	

SCALE	DESIGN UNITS	THIRD ANGLE PROJECTION
	METRIC	
TITLE SMB JACK, W/O GROOVE PCB 50 OHMS, EWR-2983 SMB-J/RA/PCB		
molex MOLEX INCORPORATED		
DOCUMENT NO. SD-73404-206	SHEET NO. 1 OF 1	