

Han 6 HPR Base Panel Screw locking

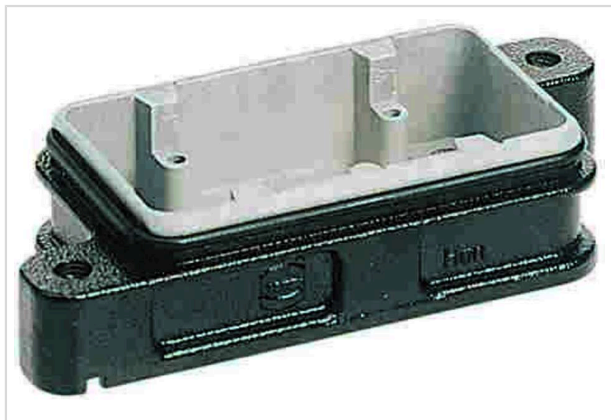


Image is for illustration purposes only. Please refer to product description.

| | |
|--------------------|---|
| Part number | 09 40 006 0311 |
| Specification | Han 6 HPR Base Panel Screw locking |
| HARTING eCatalogue | https://b2b.harting.com/09400060311 |

Identification

| | |
|--------------------------|--------------------------|
| Category | Hoods/Housings |
| Series of hoods/housings | Han [®] HPR |
| Type of hood/housing | Bulkhead mounted housing |

Version

| | |
|----------------------|---|
| Size | 6 B |
| Locking type | Screw locking |
| Field of application | Hoods/housings for harsh outdoor environments |

Technical characteristics

| | |
|--|--|
| Tightening torque (screw locking) | 4 Nm |
| Limiting temperature | -40 ... +125 °C |
| Note on the limiting temperature | For use as a connector according to IEC 61984. |
| Degree of protection acc. to IEC 60529 | IP65 IP68 IP69 / IPX9K acc. to ISO 20653 |
| Type rating acc. to UL 50 / UL 50E | 4 4X 12 |

Material properties

| | |
|-------------------------|---|
| Material (hood/housing) | Aluminium die-cast Corrosion resistant |
| Surface (hood/housing) | Powder-coated |
| Colour (hood/housing) | RAL 9005 (jet black) |



Pushing Performance
Since 1945

Material properties

| | |
|--------------------------------------|----------------------------|
| Material (seal) | NBR |
| RoHS | compliant |
| ELV status | compliant |
| China RoHS | e |
| REACH Annex XVII substances | Not contained |
| REACH ANNEX XIV substances | Not contained |
| REACH SVHC substances | Not contained |
| California Proposition 65 substances | Yes |
| California Proposition 65 substances | Nickel Naphthalene |
| Fire protection on railway vehicles | EN 45545-2 (2020-08) |
| Requirement set with Hazard Levels | R1 (HL 1-3) R7 (HL 1-3) |

Specifications and approvals

| | |
|-----------|--|
| UL / CSA | UL 1977 ECBT2.E235076 CSA-C22.2 No. 182.3 ECBT8.E235076 |
| CE | Yes |
| Approvals | DNV GL |

Commercial data

| | |
|--------------------------------|--|
| Packaging size | 1 |
| Net weight | 154.9 g |
| Country of origin | Germany |
| European customs tariff number | 85389099 |
| GTIN | 5713140057180 |
| ETIM | EC000437 |
| eCl@ss | 27440202 Shell for industrial connectors |