


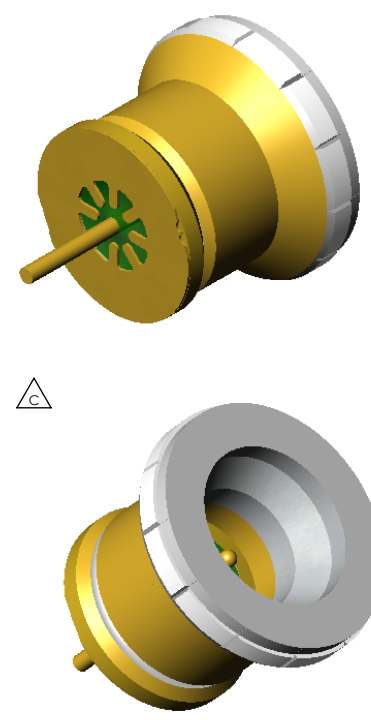
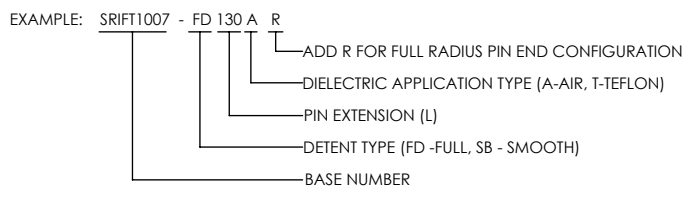
ALUMINUM COMPATIBLE LASER WELDABLE 50 OHM FEEDTHROUGH SMPM ADAPTABLE, .012 DIAMETER CENTER CONTACT, PRESS-IN

- CONFIGURATION FOR INTERFACING TO SMPM "BULLET" STYLE ADAPTER
- DESIGNED TO LASER WELD INTO AN ELECTRONIC CHASSIS
- INDUSTRY STANDARD NICKEL-IRON-COBALT ALLOY CONTACT WITH CORNING 7070 EQUIVALENT GLASS
- INTEGRAL RF GROUNDING TAB FOR EXCELLENT PERFORMANCE OVER TEMPERATURE

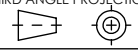

REVISIONS			
REV	CHANGE NO.	DATE	CFG APPROVAL
-	INIT RLSE	2008-11-03	J. PETRI
A	DCN000688	7/19/2010	J. PETRI
B	DCN001025	2012-05-25	J. PETRI
C	DCN001256	1/20/2014	

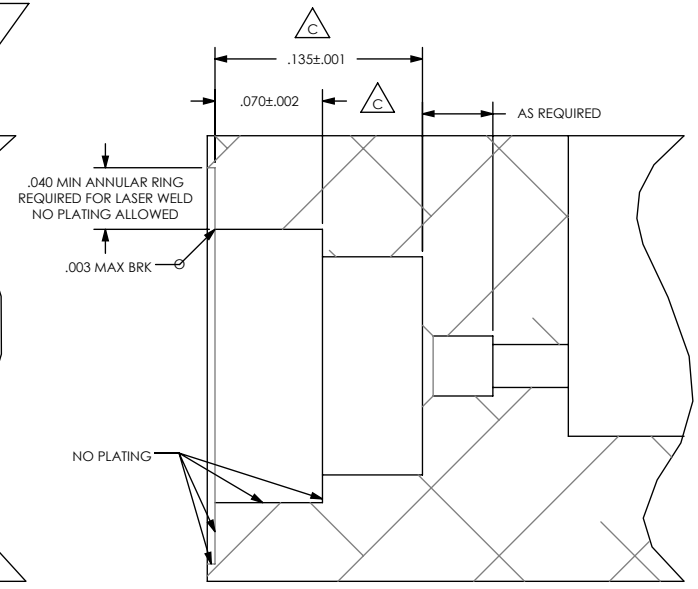
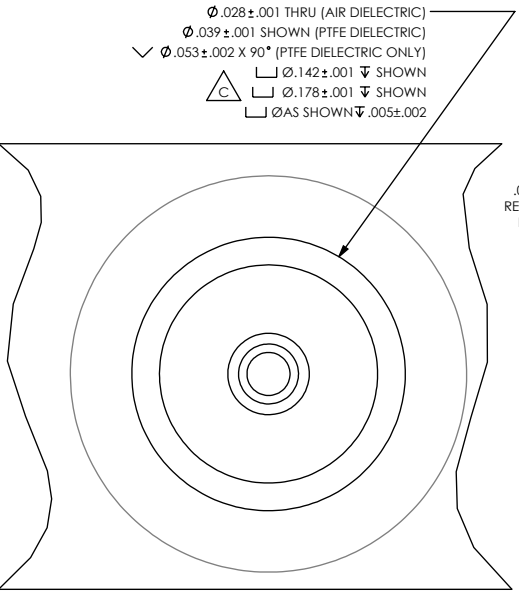
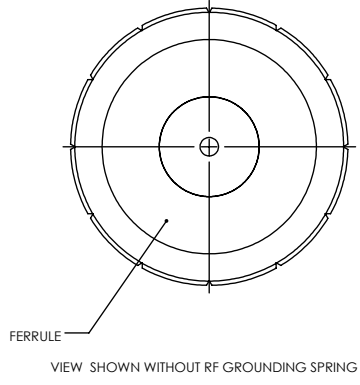
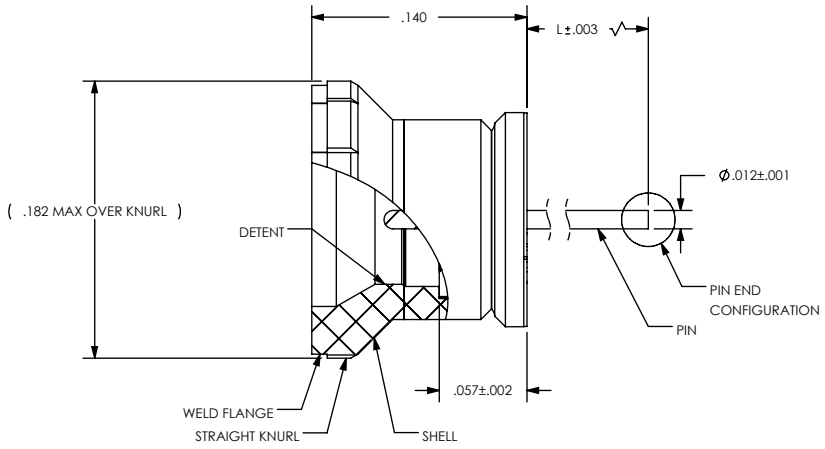
1. LEAK RATE: LESS THAN OR EQUAL TO 1X10E-9 CC/SEC He AT ONE ATMOSPHERE DIFFERENTIAL PRESSURE.
2. NOMINAL IMPEDANCE: 50 OHMS
3. INTERFACE IN ACCORDANCE WITH MIL-STD-348, SMPM.
4. PERFORMANCE: VSWR (TYP) 1.4:1 TO 40 GHZ.
5. MATERIALS:
 PIN: NICKEL-IRON-COBALT ALLOY IN ACCORDANCE WITH ASTM F15.
 DIELECTRIC: CORNING 7070 EQUIVALENT GLASS (MATCHED SEAL).
 SHELL (WELD FLANGE): ALUMINUM ALLOY 4047 IN ACCORDANCE WITH AWS A5.8.
 RF GROUNDING SPRING: BERYLLIUM-COPPER ALLOY 172/173 IN ACCORDANCE WITH ASTM B 194 (NICKEL/GOLD PLATE)
6. FINISH:
 FERRULE AND PIN: NICKEL PLATE PER QQ-N-290, CLASS 2, .000100/.000250 THICK
 GOLD PLATE PER ASTM B488, TYPE III, CODE A, .000050/.000100 THICK.

 GROUNDING SPRING: NICKEL PLATE PER QQ-N-290, CLASS 2, .000100/.000250 THICK
 GOLD PLATE PER ASTM B488, TYPE III, CODE A, .000030/.000050 THICK. 
7. ORDERING INSTRUCTIONS:
 SPECIFY BASE NUMBER FOLLOWED BY DASH NUMBER INDICATING DETENT TYPE, PIN EXTENSION AND DIELECTRIC APPLICATION TYPE:

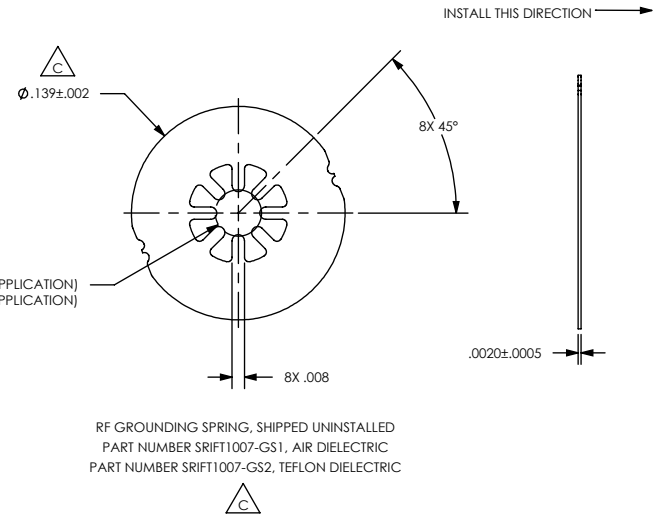


VIEWS SHOWN WITHOUT GROUNDING SPRING

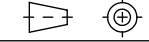
DIMENSIONING IAW ASME Y14.5M-1994 DIMENSIONS APPLY AFTER PROCESSES DIMENSIONS IAW US CUSTOMARY UNITS X ± .1, XX ± .01, XXX ± .005, ∠ ± .5° .010 MAX OUTSIDE R, .005 MAX INSIDE R 63 RMS SURFACE FINISH THIRD ANGLE PROJECTION 		 (321) 254-4067 www.srihermetics.com	
TITLE FEEDTHROUGH, SMPM COMPATIBLE, ALUMINUM LASER WELDABLE			
SIZE A	DOCUMENT SRIFT1007	REV C	
DO NOT SCALE DRAWING		SCALE 8:1	CAGE CODE 3PJY7
		SHEET 1	OF 2



RECOMMENDED HOLE DETAIL



DIMENSIONING IAW ASME Y14.5M-1994
 DIMENSIONS APPLY AFTER PROCESSES
 DIMENSIONS IAW US CUSTOMARY UNITS
 $X \pm .1, XX \pm .01, XXX \pm .005, \angle \pm .5^\circ$
 $.010$ MAX OUTSIDE R, $.005$ MAX INSIDE R
 63 RMS SURFACE FINISH
 THIRD ANGLE PROJECTION



		(321) 254-4067 www.srihermetics.com	
TITLE			
FEEDTHROUGH, SMPM COMPATIBLE, ALUMINUM LASER WELDABLE			
SIZE	DOCUMENT	SRIFT1007	REV C
SCALE	8:1	CAGE CODE	3PJY7
DO NOT SCALE DRAWING		SHEET	2 OF 2