

## Connectors for Copper Conductors

### Cast Copper Two-Hole Lugs for Code Copper Cable Certified to 600V and Recommended up to 35 kV<sup>‡</sup>

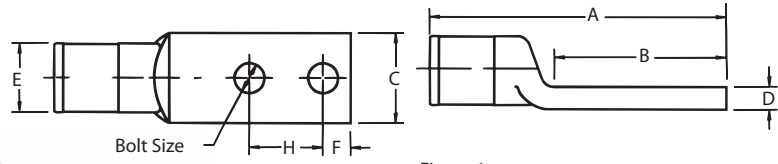


Figure 1

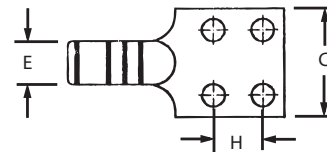


Figure 2



Material: High-Conductivity Cast Copper  
Finish: Electro Tin Plate

C o m p r e s s i o n

CAT. NO.	Code Cable Size	Bolt G Size (in.)	Dimensions in. (mm)							Die Code	No. of Crimps		
			A	B	C	D	E	F	H		12 Ton	15 Ton	40 Ton
256-30695-1055	#14-10	1/4	2.00 (50.8)	1.31 (33.3)	0.50 (12.7)	0.12 (3.0)	0.38 (9.7)	0.25 (6.4)	0.63-0.75 (16.0-19.1)	29	1	1	1
53204	#8	1/4	2.00 (50.8)	1.31 (33.3)	0.50 (12.7)	0.09 (2.3)	0.38 (9.7)	0.25 (6.4)	0.63 (16.0)	29	1	1	1
53205	#8	1/4	2.00 (50.8)	1.31 (33.3)	0.50 (12.7)	0.12 (3.0)	0.38 (9.7)	0.25 (6.4)	0.63 (16.0)	29	1	1	1
53206	#4	1/4	2.00 (50.8)	1.31 (33.3)	0.50 (12.7)	0.12 (3.0)	0.38 (9.7)	0.25 (6.4)	0.63 (16.0)	29	1	1	1
53207	#2	1/4	3.00 (76.2)	2.00 (50.8)	0.75 (19.1)	0.12 (3.0)	0.59 (15.0)	0.50 (12.7)	0.75 (19.1)	45	1	1	1
53208	#1	1/4	3.00 (76.2)	2.00 (50.8)	0.75 (19.1)	0.25 (6.4)	0.59 (15.0)	0.50 (12.7)	1.00 (25.4)	45	1	1	1
53209	1/0	3/8	3.00 (76.2)	2.00 (50.8)	0.75 (19.1)	0.25 (6.4)	0.59 (15.0)	0.50 (12.7)	1.00 (25.4)	45	1	1	1
53210	2/0	3/8	4.31 (109.5)	3.00 (76.2)	0.75 (19.1)	0.18 (4.6)	0.84 (21.3)	0.63 (16.0)	1.75 (44.5)	66	1	1	1
53211	3/0	1/2	4.31 (109.5)	3.00 (76.2)	1.00 (25.4)	0.28 (7.1)	0.84 (21.3)	0.63 (16.0)	1.75 (44.5)	66	1	1	1
53212	4/0	1/2	4.31 (109.5)	3.00 (76.2)	1.00 (25.4)	0.28 (7.1)	0.84 (21.3)	0.63 (16.0)	1.75 (44.5)	66	1	1	1
53213	250 kcmil	1/2	4.56 (115.8)	3.00 (76.2)	1.18 (30.0)	0.18 (4.6)	0.93 (23.6)	0.63 (16.0)	1.75 (44.5)	76	1	1	1
53214	300 kcmil	1/2	4.56 (115.8)	3.00 (76.2)	1.18 (30.0)	0.31 (7.9)	0.93 (23.6)	0.63 (16.0)	1.75 (44.5)	76	1	1	1
53215	350 kcmil	1/2	5.31 (134.9)	3.50 (88.9)	1.38 (35.1)	0.25 (6.4)	1.21 (30.7)	0.63 (16.0)	1.75 (44.5)	99	2	1	1
53216	400 kcmil	1/2	5.31 (134.9)	3.50 (88.9)	1.38 (35.1)	0.38 (9.7)	1.21 (30.7)	0.63 (16.0)	1.75 (44.5)	99	2	1	1
53218	500 kcmil	1/2	5.31 (134.9)	3.50 (88.9)	1.38 (35.1)	0.38 (9.7)	1.21 (30.7)	0.63 (16.0)	1.75 (44.5)	99	2	1	1
53220M	600 kcmil	1/2	5.31 (134.9)	3.50 (88.9)	1.63 (41.4)	0.53 (13.5)	1.35 (34.3)	0.63 (16.0)	1.75 (44.5)	112	2	1	1
53222M	700 kcmil	1/2	5.31 (134.9)	3.50 (88.9)	1.63 (41.4)	0.03 (0.8) ±	1.35 (34.3)	0.63 (16.0)	1.75 (44.5)	112	2	1	1
53223M	750 kcmil	1/2	5.31 (134.9)	3.50 (88.9)	1.63 (41.4)	0.03 (0.8) ±	1.35 (34.3)	0.63 (16.0)	1.75 (44.5)	112	2	1	1
53269•	1325/24	1/2	5.50 (139.7)	3.50 (88.9)	1.63 (41.4)	0.40 (10.2)	1.35 (34.3)	0.63 (16.0)	1.75 (44.5)	107	2	1	1
53224	800 kcmil	1/2	6.00 (152.4)	3.50 (88.9)	1.88 (47.8)	0.31 (7.9)	1.56 (39.6)	0.63 (16.0)	1.75 (44.5)	130	-	1	1
53226	900 kcmil	1/2	6.00 (152.4)	3.50 (88.9)	1.88 (47.8)	0.46 (11.7)	1.56 (39.6)	0.63 (16.0)	1.75 (44.5)	130	-	1	1
53228	1000 kcmil	1/2	6.00 (152.4)	3.50 (88.9)	1.88 (47.8)	0.46 (11.7)	1.56 (39.6)	0.63 (16.0)	1.75 (44.5)	130	-	1	1
53273•	1100 kcmil 2750/24	1/2	6.19 (157.2)	3.50 (88.9)	2.12 (53.8)	0.56 (14.2)	1.90 (28.3)	0.63 (16.0)	1.75 (44.5) 150 or 150H	-	-	-	-
53233	1500 kcmil	1/2	6.25 (158.8)	3.50 (88.9)	2.25 (57.2)	0.50 (12.7)	1.90 (28.3)	0.63 (16.0)	1.75 (44.5)	150	-	1	1
53233L	1500 kcmil	1/2	7.31 (185.7)	3.12 (79.2)	2.00 (50.8)	0.50 (12.7)	1.88 (47.8)	0.63 (16.0)	1.75 (44.5)	150	-	1	-
53432L•*	1500 kcmil	1/2	7.31 (185.7)	3.12 (79.2)	3.00 (76.2)	0.50 (12.7)	1.88 (47.8)	0.63 (16.0)	1.75 (44.5)	150	-	1	-
251-30485-1275	1250 kcmil	9/16	6.19 (157.2)	3.50 (88.9)	2.12 (53.8)	0.56 (14.2)	1.90 (48.3)	0.63 (16.0)	1.75 (44.5)	150	-	-	-
251-30485-1211	1750 kcmil	-	6.38 (162.1)	3.12 (79.2)	3.00 (76.2)	0.50 (12.7)	2.18 (55.4)	-	-	175	-	-	2 (fig. 2)
251-30485-1212	1750 kcmil	-	6.38 (162.1)	3.12 (79.2)	2.25 (57.2)	0.50 (12.7)	2.18 (55.4)	-	-	175	-	-	2 (fig. 1)
53239	2000 kcmil 169/110	1/2	6.19 (157.2)	3.50 (88.9)	2.75 (69.9)	0.50 (12.7)	2.18 (55.4)	0.63 (16.0)	0.63 (16.0)	175	-	-	-
53239L	178/0.104 2000 kcmil 169/0.110	1/2	7.31 (185.7)	3.12 (79.2)	2.25 (57.2)	0.50 (12.7)	2.46 (62.5)	0.63 (16.0)	0.63 (16.0)	175	-	-	-
53439L•*	178/0.104 2000 kcmil	1/2	7.31 (185.7)	3.12 (79.2)	3.00 (76.2)	0.50 (12.7)	2.18 (55.4)	0.63 (16.0)	0.63 (16.0)	175	-	-	11421 Die

\* Heavy Duty copper lugs for flexible strand cables 600V not UL or CSA Listed  
• CSA not applicable

Die Selector Chart: pp.146-153

‡ For installations from 16 kV up to 35 kV, consult shielded cable manufacturers for stress relief and insulation requirements.