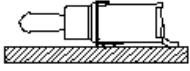


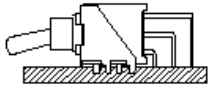
SPECIFICATIONS:

CONTACT RATING: Refer to "Contact Material Options" for more info.
ELECTRICAL LIFE: 30,000 make-and-break cycles at full load.
CONTACT RESISTANCE: 20mΩ max typ. initial @ 2-4 VDC
 100mA for both silver and gold contacts.
INSULATION RESISTANCE: 1,000MΩ min.
DIELECTRIC STRENGTH: 1,500 V RMS. @ sea level.
OPERATING TEMPERATURE: -30°C to 85°C.



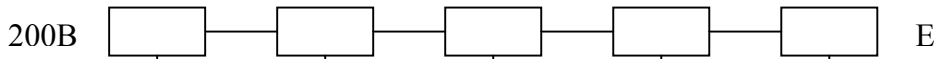
MATERIALS:

CASE & BUSHING: Glass filled nylon 4/6, flame retardant, heat stabilized (UL 94V-0).
ACTUATOR: Brass, chrome plated, internal o-ring sealed (std).
SWITCH SUPPORT: Brass, tin plated.
TERMINAL SEAL: Epoxy.



If your preferred product configuration is not shown, please contact our sales representative for custom design.

HOW TO ORDER SYSTEM



Switch Function

- WMSP-1 On-None-On
- WMSP-2 On-None-(On)
- WMSP-3 On-Off-On
- WMSP-4 (On)-Off-(On)
- WMSP-5 On-Off-(On)

Actuator

- T1 10.80 (.425") high
- T2 6.10 (.240") high
- P1 Plastic, anti-static 10.80 (.425") high
- P2 Plastic, anti-static 6.70 (.264") high
- P3 Plastic, anti-static 6.20 (.244") high
- P4 Plastic, anti-static 7.40 (.291") high

Bushing

B4 4.50 (.177") high, unthreaded

Termination

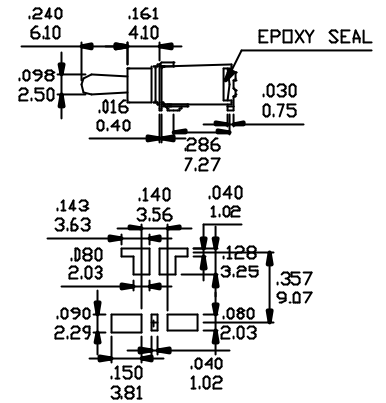
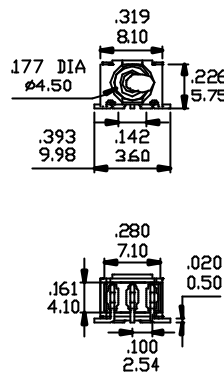
- M6 Right angle, surface mount
- S6 Surface mount
- L6 Right angle, surface mount
- M7 Vertical, right angle, surface mount

Contact Material

- Q Silver
- P Silver (tin plated term.)
- R Gold
- K Gold (tin plated term.)
- G Silver (gold over silver term.)

M6

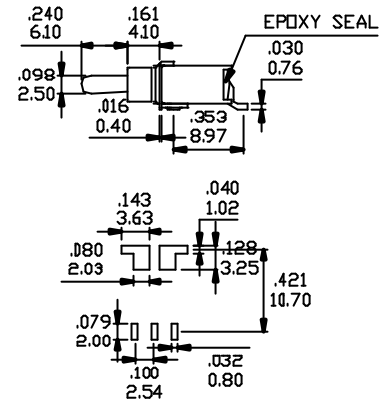
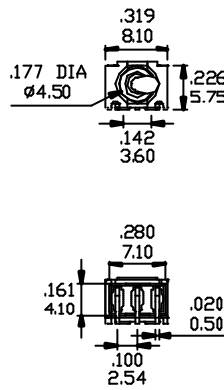
Model No.	Switching Position		
WMSP-1	ON	NONE	ON
WMSP-2	ON	NONE	(ON)
WMSP-3	ON	OFF	ON
WMSP-4	(ON)	OFF	(ON)
WMSP-5	ON	OFF	(ON)
Term. Comm.	2-3	OPEN	2-1



SPDT

S6

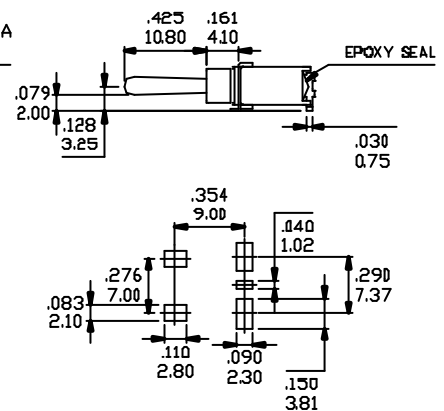
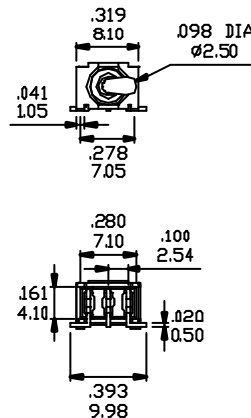
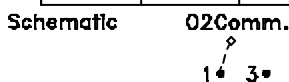
Model No.	Switching Position		
WMSP-1	ON	NONE	ON
WMSP-2	ON	NONE	(ON)
WMSP-3	ON	OFF	ON
WMSP-4	(ON)	OFF	(ON)
WMSP-5	ON	OFF	(ON)
Term. Comm.	2-3	OPEN	2-1



SPDT

L6

Model No.	Switching Position		
WMSP-1	ON	NONE	ON
WMSP-2	ON	NONE	(ON)
WMSP-3	ON	OFF	ON
WMSP-4	(ON)	OFF	(ON)
WMSP-5	ON	OFF	(ON)
Term. Comm.	2-3	OPEN	2-1



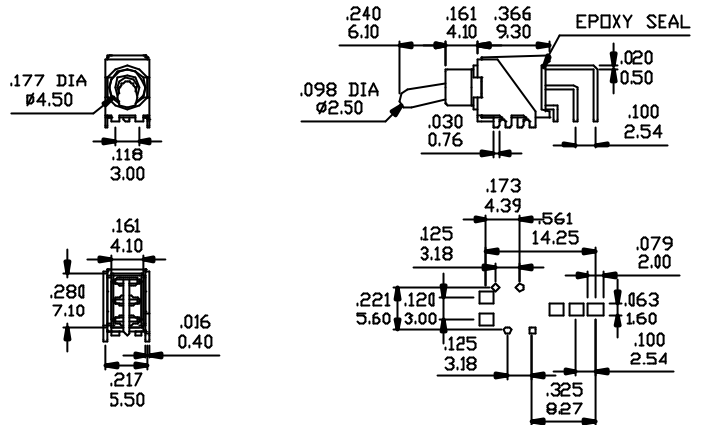
SPDT

M7

Model No.	Switching Position		
	ON	NONE	ON
WMSP-1	ON	NONE	ON
WMSP-2	ON	NONE	(ON)
WMSP-3	ON	OFF	ON
WMSP-4	(ON)	OFF	(ON)
WMSP-5	ON	OFF	(ON)
Term. Comm.	2-3	OPEN	2-1

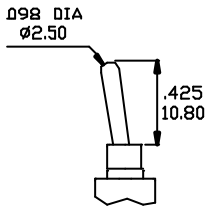


SPDT



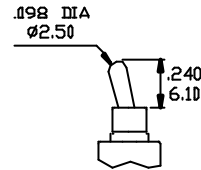
ACTUATOR OPTIONS

T1

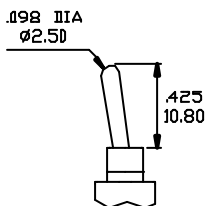


* Available with L6, S6, M7 terminals only.

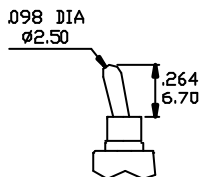
T2



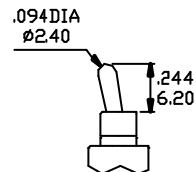
P1 PLASTIC TOGGLE



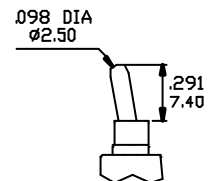
P2 PLASTIC TOGGLE



P3 PLASTIC TOGGLE



P4 PLASTIC TOGGLE



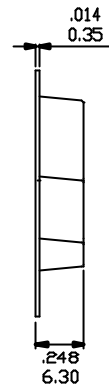
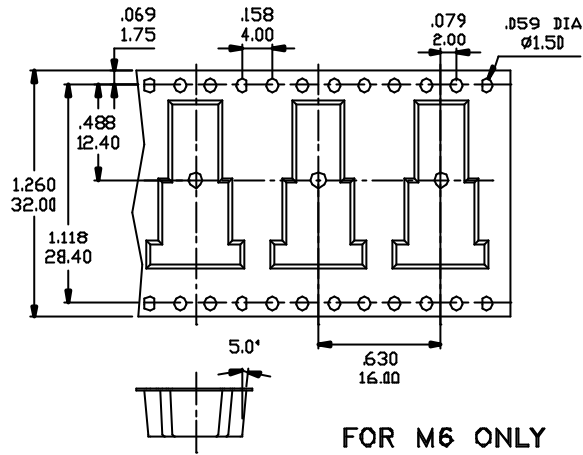
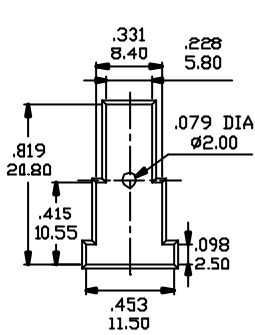
* Actuator length shown above is with B4 bushing.
 * Please consult us for detailed spec on specific item.

* PLASTIC TOGGLE is capable of withstanding ESD resistance 9000VDC.

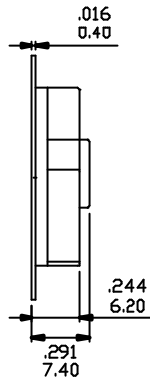
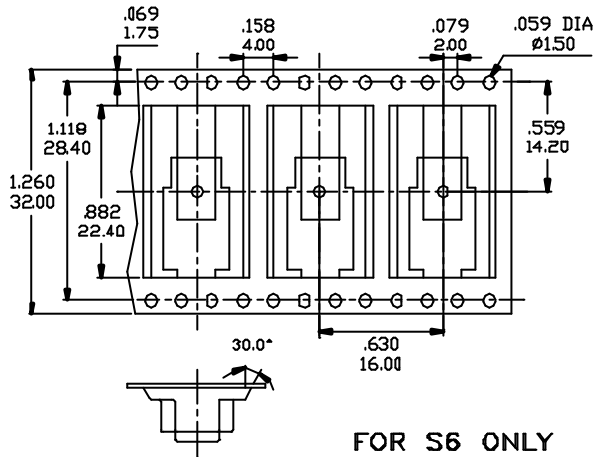
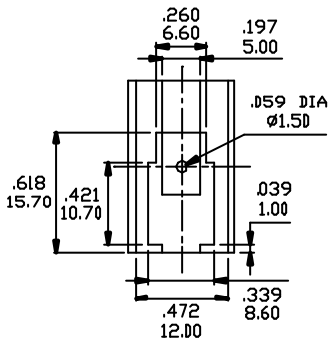
Series 200B

Sealed Surface Mount Toggle Switches

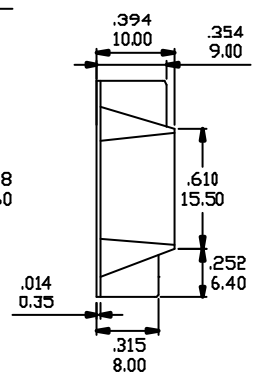
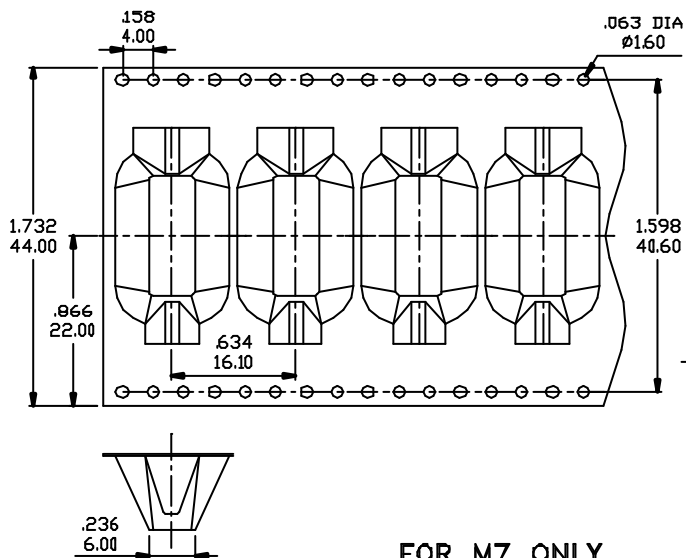
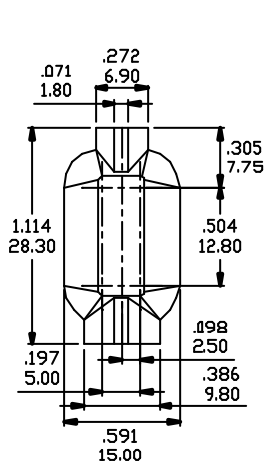
REEL TAPING



FOR M6 ONLY

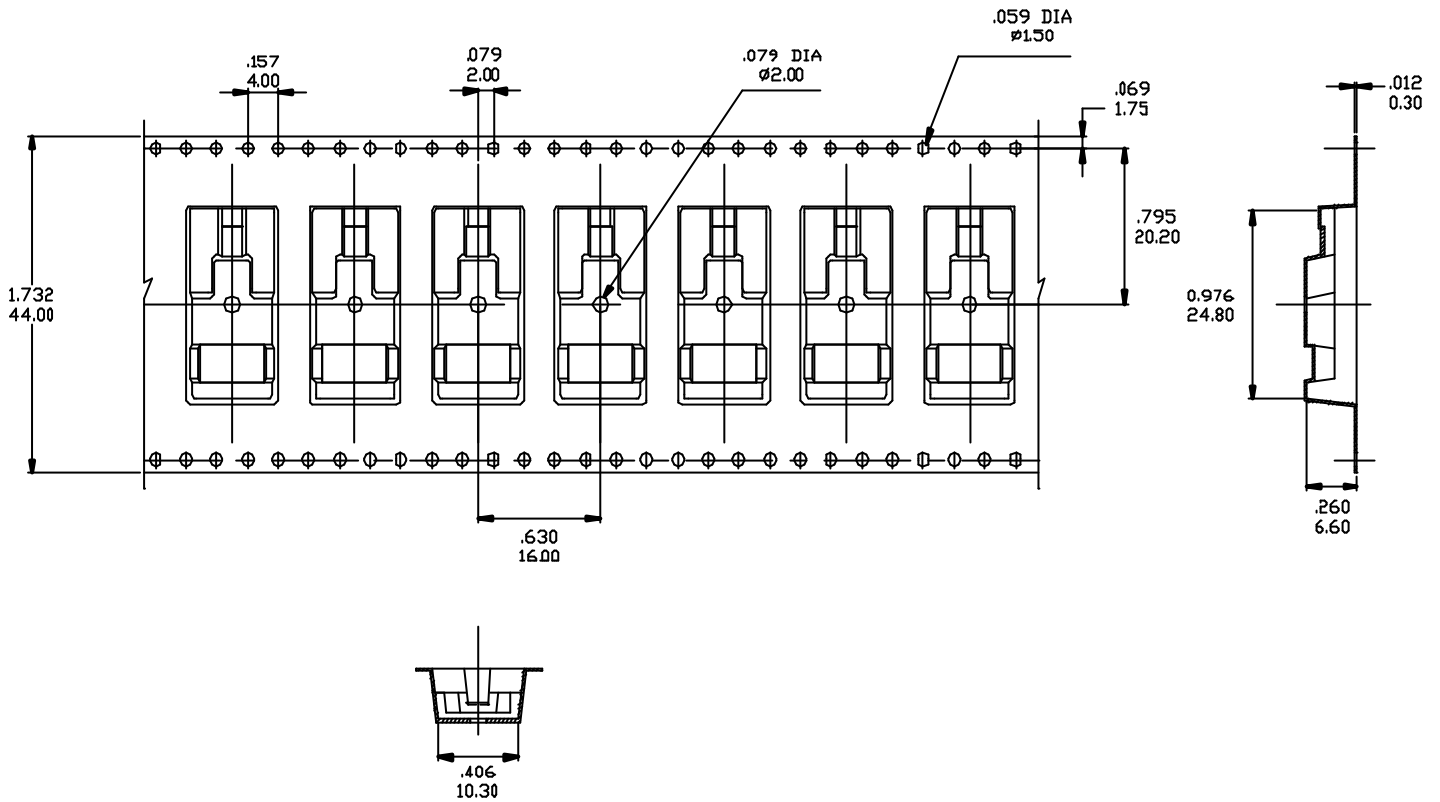


FOR S6 ONLY



FOR M7 ONLY

REEL TAPING



FOR L6 ONLY

REEL TAPING

REEL INFORMATION	
OUTSIDE DIAMETER	330mm(12.99")
PILOT HOLE	13mm(.502")
QUANTITY PER REEL	500

CONTACT MATERIAL OPTIONS

Coding	Contact Material	Terminal Plating	Rating	Agency Approvals
Q	Silver ¹	Silver plated ¹	3Amps @ 125VAC or 28VDC 1.5Amps @ 250VAC	IP67
P		Tin plated ⁵ ⁷		
R	Gold ²	Gold plated ⁴	0.4VA max @ 20V max (AC or DC)	IP67
K		Tin plated ⁵ ⁶		
G	Silver ¹	Gold over ³ silver	3Amps @ 125VAC or 28VDC 1.5Amps @ 250VAC	IP67

1. Movable Contact / Terminals: Copper alloy, silver plated.
2. Movable Contact: Copper alloy with gold plated over nickel plated.
3. Terminals: Silver plated with outer layer in gold plating.
4. Terminals: Copper alloy, with gold plated over nickel plated.
5. Outer Terminals: Copper alloy with tin over nickel plated.
6. Terminal Contact: Gold plated over nickel plated.
7. Terminal Contact: Palladium nickel alloy plated.