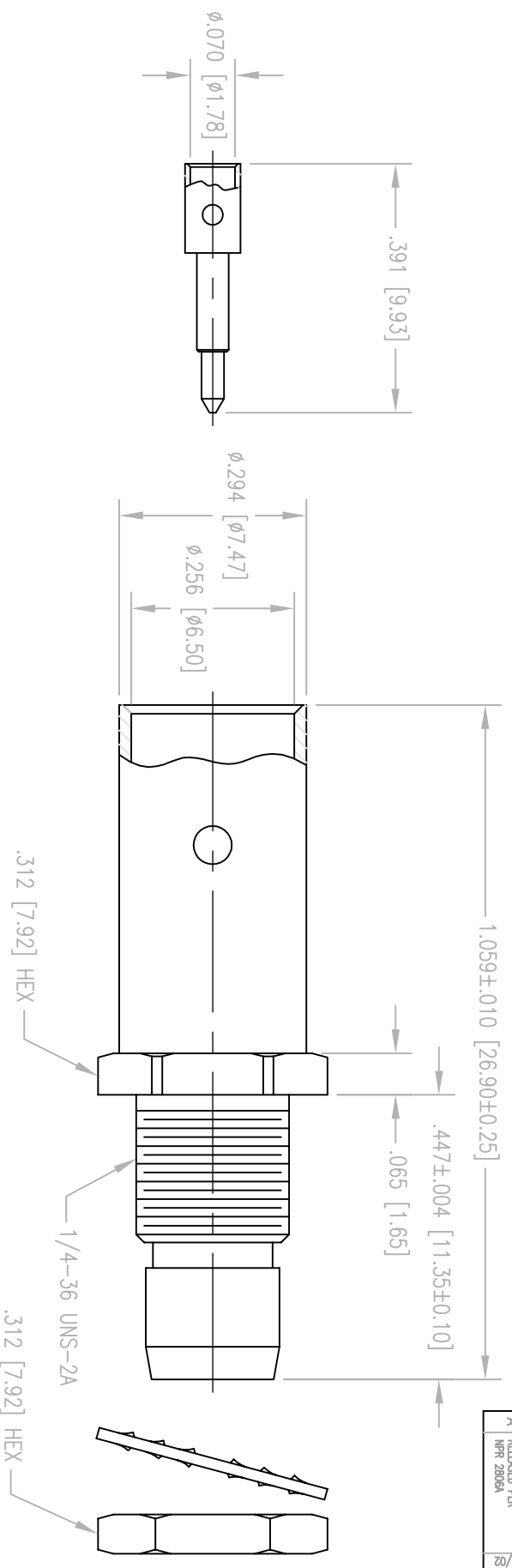
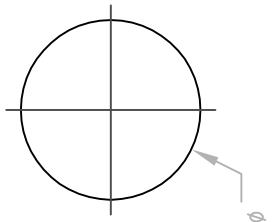


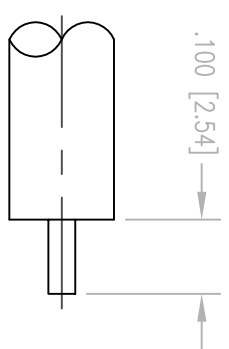
REV.	DESCRIPTION	DATE	APP'D
A	RELEASED PER NPR 2806A	3/6/02	



RECOMMENDED MOUNTING HOLE



CABLE TRIMMING DIMENSIONS



- NOTES:
1. MATERIALS:
 FRONT CONTACT: COPPER ALLOY
 LOCKWASHER: PHOSPHOR BRONZE PER ASTM B103
 ALL OTHER METAL PARTS: BRASS PER ASTM B16
 INSULATOR: TEFLON PER ASTM D1710
 2. FINISH:
 CONTACTS: .000030 MIN. GOLD PER MIL-G-45204 OVER
 .000050 MIN. NICKEL PER QQ-N-290
 ALL OTHER METAL PARTS: TRI-METAL PLATE
 3. FOR USE WITH .250 DIA. SEMI-RIGID CABLE OR EQUIVALENT.
 4. FOR CABLING PROCEDURES USE CAP 5-24 WITH TRIMMING DIMENSIONS SHOWN.

PER ASME Y14.5M-1994 UNLESS OTHERWISE SPECIFIED: DIMENSIONS ARE IN INCHES (MM) DECIMALS .xx ± .01 [0.254] FRACTIONS .xxx ± .005 [0.127] ANGLES ± 2° SCALE: 4:1		NORTHROP GRUMMAN Winchester Electronics 400 Park Road Watertown, CT 06795	
CUSTOMER DRAWING		TITLE BMA STRAIGHT BULKHEAD PLUG	
DRAWN JED	DATE 3/4/02	CHECKED JMH	DATE 3/4/02
APPROVED JDM	DATE 3/4/02	APPROVED KJT	DATE 3/4/02
A		360-574-2501R	
SH#	1	OF	1
REV.	A		