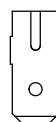
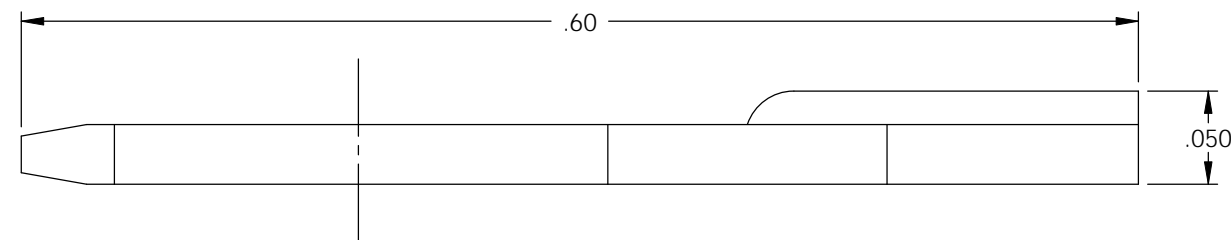
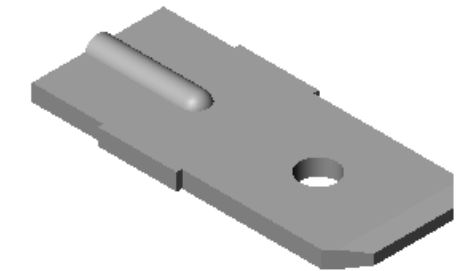
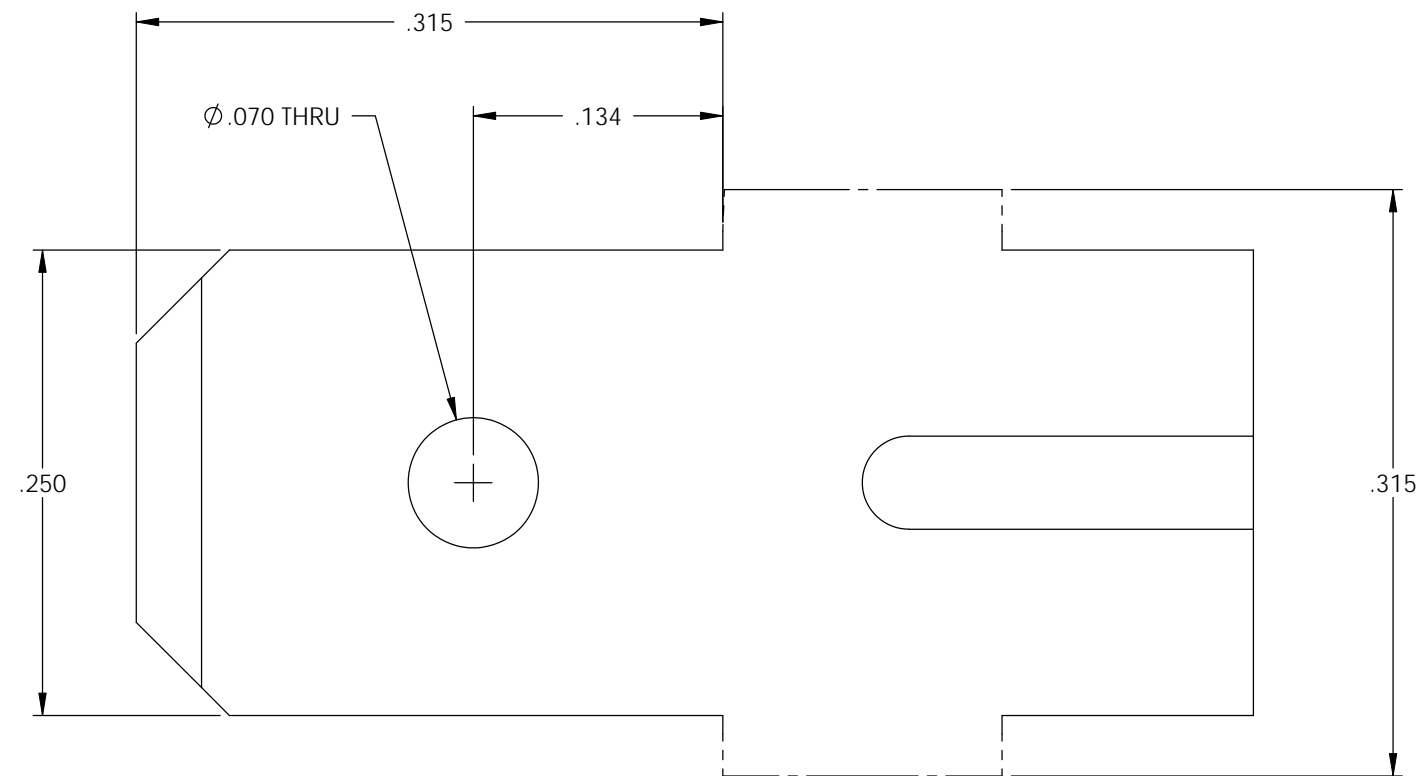


NOTES:
 1. MATERIAL: .032 THICK, NICKEL PLATED STEEL,
 #2 TEMPER (1/2 HARD)
 PER ETCO METAL CODE 03313.

P/C	DESCRIPTION
07904	M3W-X-NPS

Rev.	Description of Change/ SCN#	Date
1	REDRAWN ON SOLIDWORKS NO CHANGES SCJ ORG.ENG.DWG.DATE: 5-14-81	1-24-08



DIRECTION EXITING TOOL,
 WELD BUMP UP, TO THE BACK
 PARTS PRODUCED IN LOOSE PIECE FORM

UNCONTROLLED COPY

 THIRD ANGLE PROJECTION TOLERANCES UNLESS OTHERWISE SPECIFIED INCHES: .XX - ±.030 .XXX - ±.015 ANGLES: ±5°	TOOL NO. 0135	Title: .032 X .250 WELDING MALE DISCONNECT		
		DO NOT SCALE DWG.	Drawn By: S.JOHNSON	Date: 1-24-08
ETCO Incorporated Engineered Products 25 Bellows Street Warwick, RI 02888 Phone: (401) 467-2400 Fax: (401) 467-9230 www.ETCO.com		Chk'd/App'd By:	Scale: 10X	Size B
		Dwg. No.: M3W-X cust		