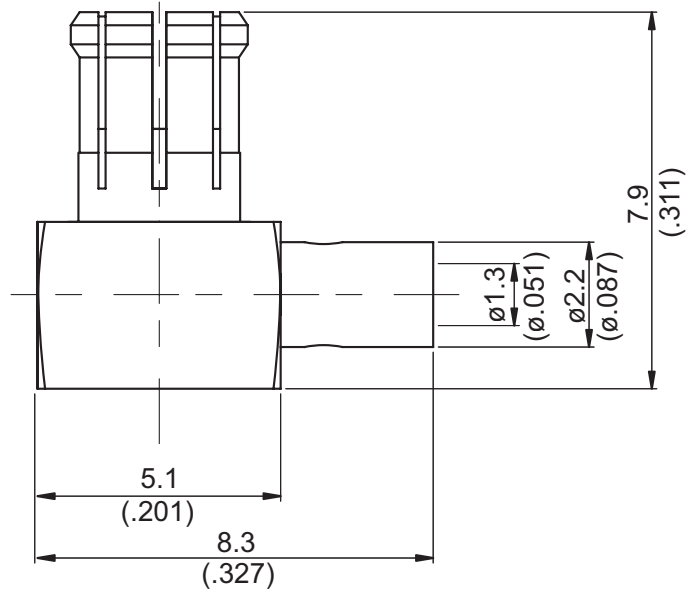


MCX33RE-9047

MCX Plug Solder Right Angle

50Ω



Parts	Material	Plating (Micro-inch)
Ferrule	Brass	Gold 5 Over Nickel 50 Over Copper 50
Cover	Brass	Gold 5 Over Nickel 50 Over Copper 50
Contact Pin	Brass	Gold 20 Over Nickel 50 Over Copper 50
Insulator	Teflon	
Body	Phosphor Bronze	Gold 5 Over Nickel 50 Over Copper 50

Weight: 0.74 g

Suitable Cables: Semi-rigid.047

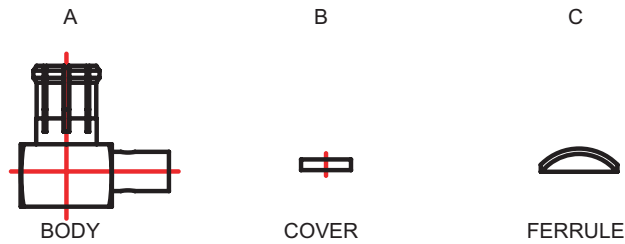
This part number complies with RoHS.

Notice: JYEBAO reserves the right to make modifications deemed appropriate.

CABLE ASSEMBLY INSTRUCTION

MCX33RE-9047

JYE BAO CO., LTD.

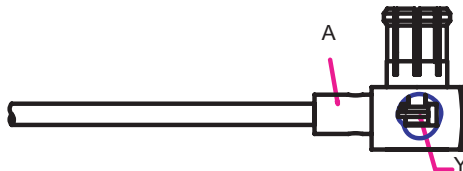


DIAGRAM

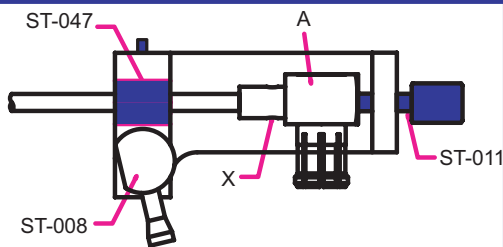
ASSEMBLY INSTRUCTION



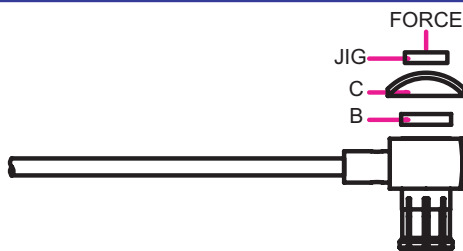
Step 1: STRIP AS SHOWN .



Step2: SLIDE CENTER CONDUCTOR ON THE CONTACT PIN OF CONNECTOR "A", AND SOLDER IN "Y".



Step 3: INSERT PREPARED CABLE INTO CONNECTOR BODY " A " AND USE SOLDERING FIXTURE " ST-008 ", INSERT TOOL " ST-047 " AND LOCATOR TOOL " ST-011 " TO FIX THE CONNECTOR. SOLDER IN " X " .



Step 4: PRESS ON THE TOP OF "B" AND "C" WITH JIGS.

This part number complies with RoHS.

Notice: JYEBAO reserves the right to make modifications deemed appropriate.