

bel/ defining a degree of excellence

DIGITAL DELAY LINE SERIES 0447 AND A447 5 TAP

TECHNICAL INFORMATION

TEST CONDITIONS

Pulse Voltage 3.2 Volts
 Rise Time 3.0 Nsec (10%-90%)
 Pulse Width $1.2 \times$ Total Delay
 Pulse Period $4 \times$ Pulse Width
 Supply Current, I_{cc} 60.0 Milliamps max.
 Supply Voltage, V_{cc} 5.0 Volts
 Ambient Temperature 25°C

PERFORMANCE CHARACTERISTICS

Logic 1 Input Current 50 Microamp max.
 Logic 0 Input Current - 2 Milliamp max.
 Logic 1 Output Voltage 2.7 Volts min.
 Logic 0 Output Voltage 0.5 Volts max.
 Delay Tolerance From Input To Tap ± 2 Nsec or 5% whichever is greater
 Delay Tolerance From Tap To Tap ± 2 Nsec or 7% whichever is greater
 All specified Performance Characteristics apply at above listed Test Conditions.

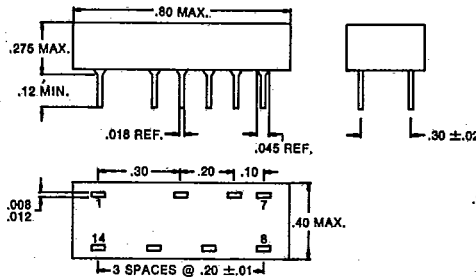
ELECTRICAL CHARACTERISTICS

Supply Voltage, V_{cc} 4.75 to 5.25 Volts
 Operating Temperature Range 0°C To 70°C
 Temperature Coefficient Of Total Delay 500PPM/°C Typical
 Minimum Input Pulse Width 40% Of Total Delay
 Maximum Duty Cycle 50%

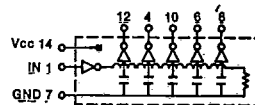
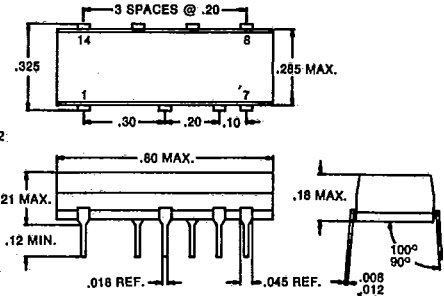
DRIVE CAPABILITIES

10 TTL Loads/Tap max.
 20 TTL Loads/Unit max.
 — Compatible with TTL and DTL circuits
 — Other delays and tolerances upon request

0447



A447



Part * Number	Total Delay 1, 3	Delay / Tap 1, 3	Rise, Time 2, 3
0447-0025-02	25NS	5NS	4NS
0447-0050-02	50NS	10NS	4NS
0447-0100-02	100NS	20NS	4NS
0447-0150-02	150NS	30NS	4NS
0447-0200-02	200NS	40NS	4NS
0447-0250-02	250NS	50NS	4NS
0447-0300-02	300NS	60NS	4NS
0447-0400-02	400NS	80NS	4NS
0447-0450-02	450NS	90NS	4NS
0447-0500-02	500NS	100NS	5NS

1 Delays measured at 1.5 Volts level on Leading Edge only.
 2 Rise Times measured from .75 Volts to 2.4 Volts.
 3 Measured with no loads on taps.
 * Auto insertable package part number starts with A447.

Specifications Subject To Change Without Notice