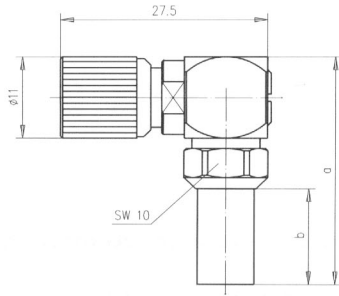


4 1.6/5.6 Kabelwinkelstecker Crimp

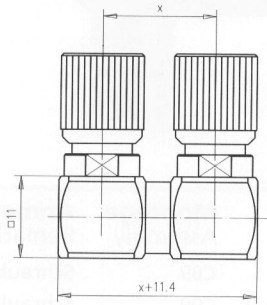
1.6/5.6 Angle Plug Crimp



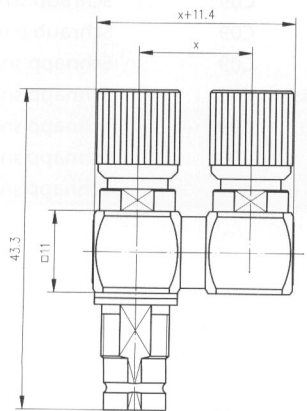
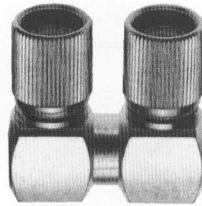
Bestell-Nr. Order Nr.	Kabelgruppe; Kabel Cable group; cable	Montage Assembly	Anmerkungen Remarks	Abmessungen Dimensions	Crimpeinsatz Crimp die
J01070A0006	G12 (0.315/1.95-3.7)	C1904	Schraub screw	a=29, b=11	N01001L1274
J01070A0007	G4 (RG-179B/U)	C1903	Schraub screw	a=28, b=11	N01001A0009
J01070D1713	2YC(MS)CY 0.5/3.0-6.0	C1906	Schraub screw	a=31, b=13	N01001A0007
J01070G1713	02YS (ST) CH 0.45/2.0-3.4 Leoni; 02Y (ST) CH 0.45/2.0-3.4 Bedea; 02Y (ST) CY 0.45/2.0-3.4 Siemens; 2YCY 0.4/2.5-3.8	C1904	Schraub screw	a=31, b=13	N01001L1274
J01070H1713	0.65/3.7-6.7	C1906	Schraub screw	a=31, b=13	N01001A0007
J01070K1713	G2 (RG-59B/U)	C1906	Schraub screw	a=31, b=13	N01001A0007
J01071A0005	G12 (0.315/1.95-3.7)	C1904	Schnapp snap	a=29, b=11	N01001L1274
J01071A0006	G4 (RG-179B/U)	C1903	Schnapp snap	a=28, b=11	N01001A0009
J01071D1714	2YC(MS)CY 0.5/3.0-6.0	C1906	Schnapp snap	a=31, b=13	N01001A0007
J01071G1714	02YS (ST) CH 0.45/2.0-3.4 Leoni; 02Y (ST) CH 0.45/2.0-3.4 Bedea; 02Y (ST) CY 0.45/2.0-3.4 Siemens; 2YCY 0.4/2.5-3.8	C1904	Schnapp snap	a=31, b=13	N01001L1274
J01071H1714	0.65/3.7-6.7	C1906	Schnapp snap	a=31, b=13	N01001A0007
J01071K1714	G2 (RG-59B/U)	C1906	Schnapp snap	a=31, b=13	N01001A0007

5 1.6/5.6 Bügelstecker

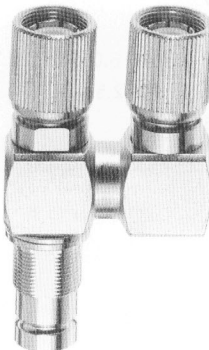
1.6/5.6 U Link, male



A

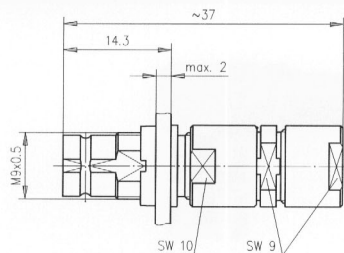


B

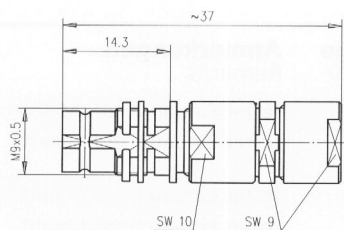


Bestell-Nr. Order Nr.	Abb. Fig.	Anmerkungen Remarks	Abmessungen Dimensions
J01070A0010	A	Schraub screw	x=15
J01070B1702	A	Schnapp snap	x=15
J01070C1702	A	Einschub slide on	x=15
J01071A1702	A	Schraub screw	x=30
J01071B1702	A	Schnapp snap	x=30
J01071C1702	A	Einschub slide on	x=30
J01072A1702	A	Schraub screw	x=45
J01072B1702	A	Schnapp snap	x=45
J01072C1702	A	Einschub slide on	x=45
J01070A0009	B	Schraub mit Meßbuchse screw	x=15

6 1.6/5.6 Kabeleinbaubuchse 1.6/5.6 Bulkhead Jack



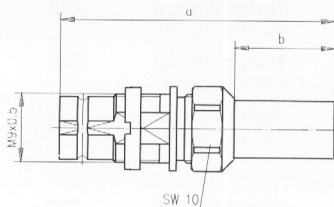
A



B

Bestell-Nr. Order Nr.	Abb. Fig.	Kabelgruppe; Kabel Cable group; cable	Montage Assembly	Anmerkungen Remarks	Einbaumaß Mount. dim.
J01073B1700	A	2YCCY 0.7/4.4-7.4; Flex 7/75	C08	fester Einbau fixed mount	Z32
J01073D1700	A	G2 (RG-59B/U); 2YC(MS)CY 0.5/3.0-6.0; 2YCY 0.7/4.4-6.0	C08	fester Einbau fixed mount	Z32
J01073F1700	A	2YC(MS)CY 0.4/2.5-4.8; 2YCCY 0.4/2.5-4.5	C08	fester Einbau fixed mount	Z32
J01073G1700	A	2YCY 0.4/2.5-3.8	C08	fester Einbau fixed mount	Z32
J01073H1700	A	0.65/3.7-6.7	C08	fester Einbau fixed mount	Z32
J01073B1706	B	2YCCY 0.7/4.4-7.4	C08	schwimmende Befestigung float mount	Z32
J01073D1706	B	G2 (RG-59B/U); 2YC(MS)CY 0.5/3.0-6.0; 2YCY 0.7/4.4-6.0	C08	schwimmende Befestigung float mount	Z32
J01073G1706	B	2YCY 0.4/2.5-3.8; Flex-3/75	C08	schwimmende Befestigung float mount	Z32
J01073H1706	B	0.65/3.7-6.7	C08	schwimmende Befestigung float mount	Z32

7 1.6/5.6 Kabeleinbaubuchse Crimp 1.6/5.6 Bulkhead Jack Crimp

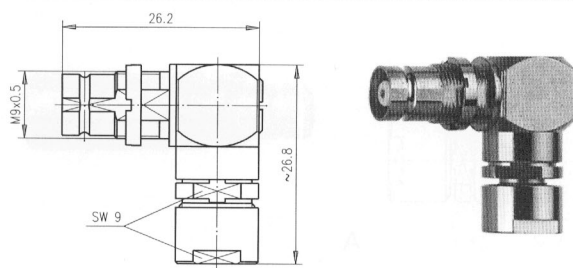


Bestell-Nr. Order Nr.	Abmess. Dim.	Kabelgruppe; Kabel Cable group; cable	Montage Assembly	Anmerkungen Remarks	Einbaumaß Mount. dim.	Crimpeinsatz Crimp die
J01073A0001	a=33, b=11	G12 (0.315/1.95-3.7)	C1804	fester Einbau fixed mount	Z32	N01001L1274

Bestell-Nr. Order Nr.	Abmess. Dim.	Kabelgruppe; Kabel Cable group; cable	Montage Assembly	Anmerkungen Remarks	Einbaumaß Mount. dim.	Crimpeinsatz Crimp die
J01073A0002	a=32, b=11	G4 (RG-179B/U)	C1803	fester Einbau fixed mount	Z32	N01001A0009
J01073D1712	a=35, b=13	2YC(MS)CY 0.5/3.0-6.0	C1806	fester Einbau fixed mount	Z32	N01001A0007
J01073G1712	a=35, b=13	02YS (ST) CH 0.45/2.0-3.4 Leoni; 02Y (ST) CH 0.45/2.0-3.4 Bedea; 02Y (ST) CY 0.45/2.0-3.4 Siemens; 2YCY 0.4/2.5-3.8; Flex-3/75	C1804	fester Einbau fixed mount	Z32	N01001L1274
J01073H1712	a=35, b=13	0.65/3.7-6.7	C1806	fester Einbau fixed mount	Z32	N01001A0007
J01073K1712	a=35, b=13	G2 (RG-59B/U)	C1806	fester Einbau fixed mount	Z32	N01001A0007

8 1.6/5.6 Kabelwinkeleinbaubuchse

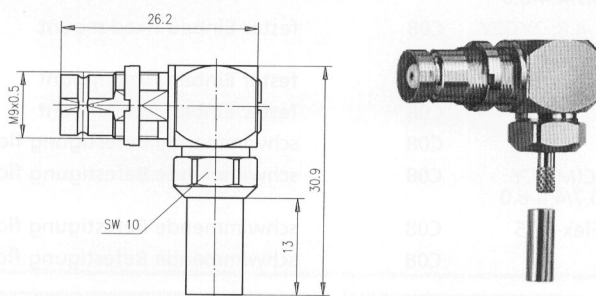
1.6/5.6 Angle Bulkhead Jack



Bestell-Nr. Order Nr.	Kabelgruppe; Kabel Cable group; cable	Montage Assembly	Anmerkungen Remarks	Einbaumaß Mount. dim.
J01073A0004	2YCCY 0.7/4.4-7.4	C10	fester Einbau fixed mount	Z32
J01073B0004	G2 (RG-59B/U); 2YC(MS)CY 0.5/3.0-6.0; 2YCY 0.7/4.4-6.0	C10	fester Einbau fixed mount	Z32
J01073C0004	2YC(MS)CY 0.4/2.5-4.8; 2YCCY 0.4/2.5-4.5	C10	fester Einbau fixed mount	Z32
J01073D0004	2YCY 0.4/2.5-3.8; Flex-3/75	C10	fester Einbau fixed mount	Z32
J01073E0004	0.65/3.7-6.7	C10	fester Einbau fixed mount	Z32

9 1.6/5.6 Kabelwinkeleinbaubuchse Crimp

1.6/5.6 Angle Bulkhead Jack Crimp



Bestell-Nr. Order Nr.	Abmess. Dim.	Kabelgruppe; Kabel Cable group; cable	Montage Assembly	Anmerkungen Remarks	Einbaumaß Mount. dim.	Crimpeinsatz Crimp die
J01073B0005	a=29, b=11	G12 (0.315/1.95-3.7)	C2004	fester Einbau fixed mount	Z32	N01001L1274
J01073D0005	a=31, b=13	2YC(MS)CY 0.5/3.0-6.0	C2006	fester Einbau fixed mount	Z32	N01001A0007
J01073E0005	a=29, b=11	02YS (ST) CH 0.45/2.0-3.4 Leoni; 02Y (ST) CH 0.45/2.0-3.4 Bedea; 02Y (ST) CY 0.45/2.0-3.4 Siemens; 2YCY 0.4/2.5-3.8	C2004	fester Einbau fixed mount	Z32	N01001L1274
J01073H0005	a=31, b=13	0.65/3.7-6.7	C2006	fester Einbau fixed mount	Z32	N01001A0007
J01073K0005	a=31, b=13	G2 (RG-59B/U)	C2006	fester Einbau fixed mount	Z32	N01001A0007
J01073A0006	a=28, b=11	G4 (RG-179B/U)	C2003	fester Einbau fixed mount	Z32	N01001A0009