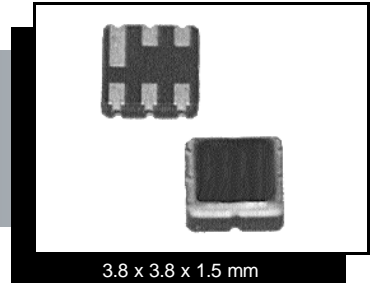


CERAMIC SURFACE-MOUNT, TWO-PORT
SAW RESONATORS
ASQ915S3



3.8 x 3.8 x 1.5 mm

FEATURES:

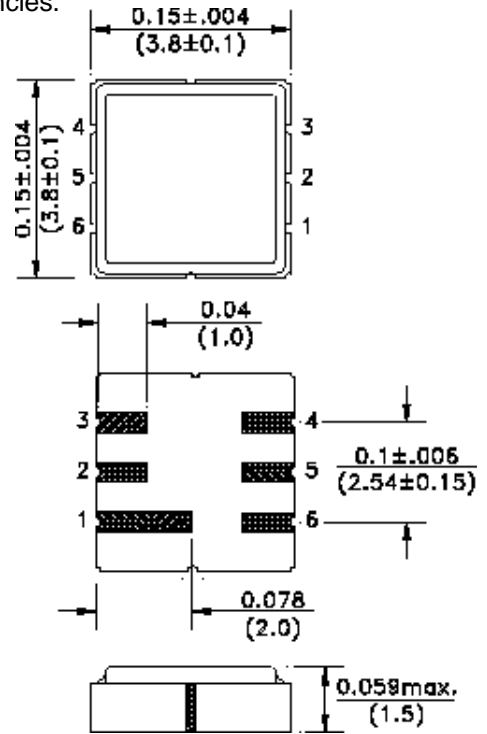
- Two-port SAW resonator 915MHz. See page 87- 88 for additional frequencies.
- SMD makes reflow soldering possible.

APPLICATIONS:

- Wireless car alarm, Garage door opener.
- Remote keyless entry.

ABSOLUTE MAXIMUM RATINGS:

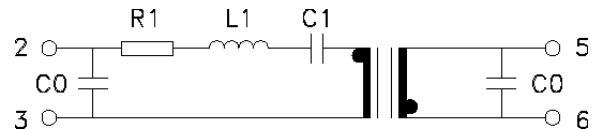
DC voltage	12V
Operating temperature	-30°C to +85°C
Storage temperature	-40°C to +85°C
Maximum power dissipation	0dBm



Dimensions: Inches (mm)

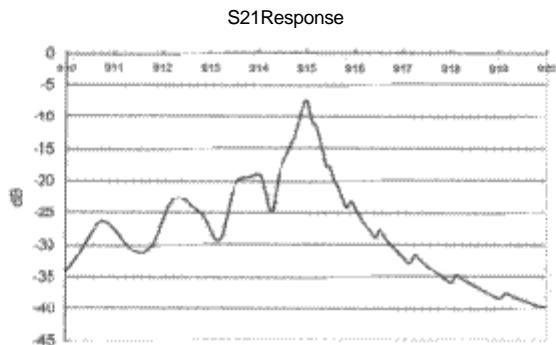
Pin No.	Function
2	Input
5	Output
1, 3,	GND
4, 6	

Equivalent circuit:



Marking:
915S3
AZY

(ZY: Date code)



Center Freq=915MHz, Span=10MHz

STANDARD SPECIFICATIONS

PART NUMBER		ASQ915S3			
CHARACTERISTICS	UNIT	min.	typ.	max.	
Center frequency	Fr	MHz	914.85	915	915.15
Insertion loss	IL	dB	-	8	9
Shunt capacitance	Co	pF	-	1.9	-
Motional resistance	R1	Ω	-	12.5	-
Motional inductance	L1	μH	-	134.5	-
Motional capacitance	C1	fF	-	0.225	-
Turnover temperature	To	°C	-	25	-
Temperature coefficient	TC	ppm/C ²	-	0.032	-

Packaging option: -T for tape and reel, see appendix H.
Reflow profile, see appendix E.
Reliability specifications, see SAW application notes.

NOTE: Left blank if standard • All specifications and markings subject to change without notice

ABRACON IS
ISO 9001 / QS 9000
CERTIFIED

29 Journey • Aliso Viejo, CA 92656 • USA
(949) 448-7070 • FAX: (949) 448-8484

E-MAIL: abinfo@abracon.com • INTERNET ADDRESS: www.abracon.com

