

DC to DC Converters

Insulation Type, For LAN, ISO8802-3 10BASE2/5

Conformity to RoHS Directive

CE-20 Series

SHAPES AND DIMENSIONS

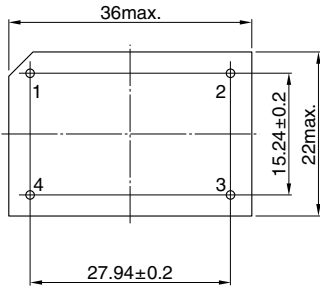


Fig.1

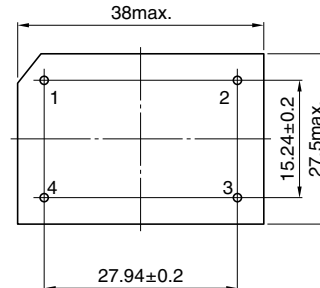
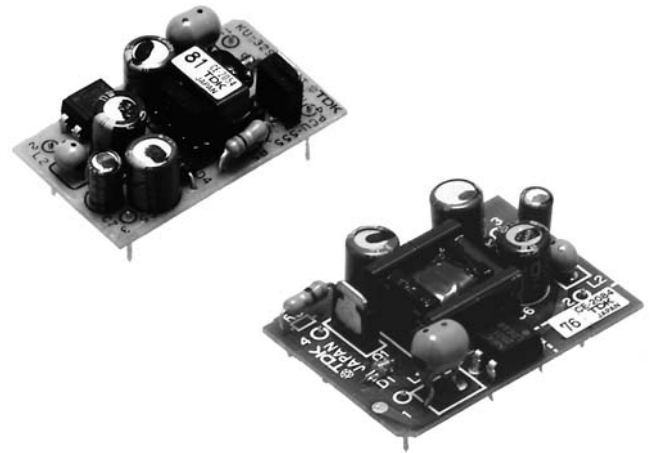
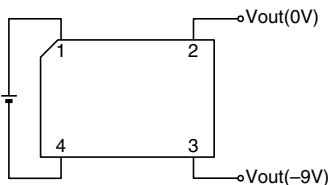


Fig.2

Dimensions in mm

CIRCUIT DIAGRAM



COMMON SPECIFICATIONS

Auxiliary functions		
Overcurrent protection	Yes	
Remote ON-OFF	No	
Temperature range	Operating(°C)	0 to +70
	Storage(°C)	-20 to +85
Humidity range	Operating(%RH)	20 to 95
	Storage(%RH)	[Maximum wet-bulb temperature: 38°C, without dewing]
Warranty period	1 year	

SPECIFICATIONS AND STANDARDS

Part No.		CE-2054	CE-2074	CE-2084	CE-2094
Maximum output power	W	1.8	1.8	1.8	1.8
Input conditions					
Input voltage E _{dc}	V	4.5 to 5.5	10.8 to 13.2	4.5 to 5.5	10 to 15.75
Efficiency* ¹	%	60min.	70min.	60min.	68min.
Output characteristics					
Output voltage E _{dc}	V	-9	-9	-9	-9
Maximum output current	mA	200	200	200	200
Total variation* ²	%	±5	±5	±5	±5
Ripple noise E _{p-p} * ²	mV	200max.	200max.	200max.	200max.
Withstand voltage E _{ac}	V	500min.	500min.	2,000min.	2,000min.
Shapes and dimensions		Fig.1	Fig.1	Fig.2	Fig.2
Weight	g	6	6	8	8

*¹ Typical input voltage, maximum output current.*² Total variation and output ripple are determined under the conditions listed below.CE-2054, CE-2084 : V_{in}=4.5 to 5.5V, I_o=50 to 200mA, T_a=0 to +70°CCE-2094 : V_{in}=10 to 15.75V, I_o=50 to 200mA, T_a=0 to +70°CCE-2074 : V_{in}=10.8 to 13.2V, I_o=50 to 200mA, T_a=0 to +70°C

PRECAUTIONS

- Input fuse
A fuse should be connected to the input with a current rating 3 times that of the standard(normal) input current.
- An electrolytic capacitor is used for this product. When using this product for a long time, the life should be taken into consideration.
- Conformity to RoHS Directive: This means that, in conformity with EU Directive 2002/95/EC, lead, cadmium, mercury, hexavalent chromium, and specific bromine-based flame retardants, PBB and PBDE, have not been used, except for exempted applications.

All specifications are subject to change without notice.