
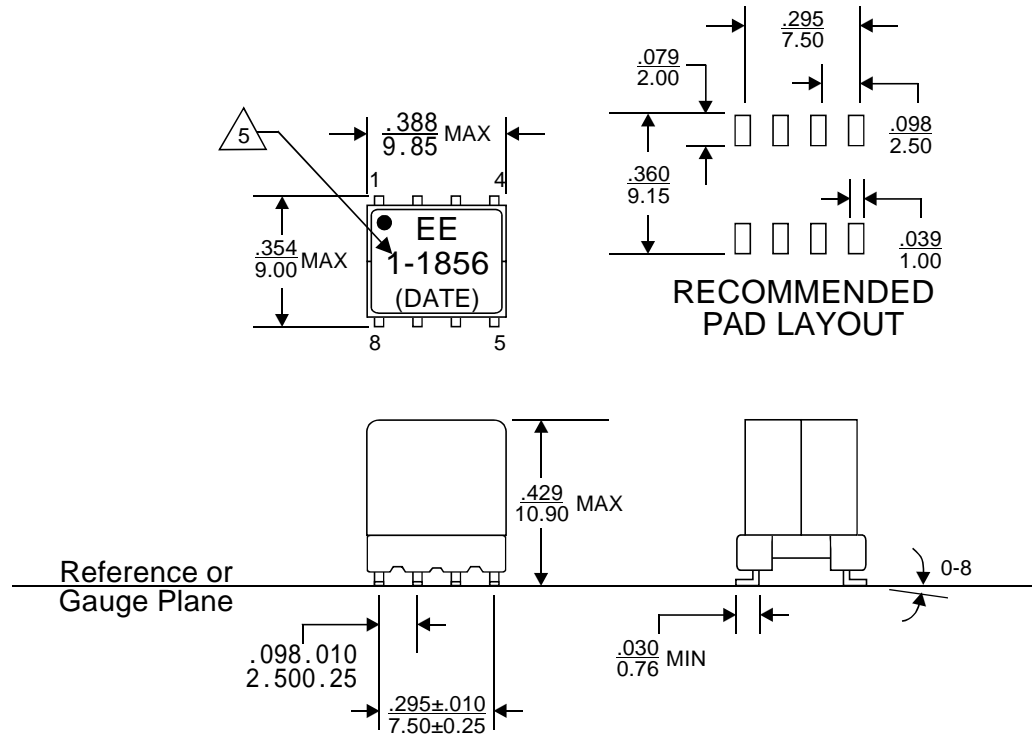


REVISIONS			
REV.	DESCRIPTION	ECN NO.	DATE
01	FIRST RELEASE FOR RFQ#D2006-6377	N/A	08/14/06

PAGE 4 IS FOR INTERNAL ONLY

PART NUMBER		PART DESCRIPTION		TITLE																					
821-01856		Standard version, with lead(Pb)		TRANSFORMER, VDSL, SMT, 8 PIN																					
821-01856F		RoHS compliant per EU Directive 2002/95/EC(without exemption of solder content)																							
<p align="center"><u>WARNING !</u></p> <p>ALL SHEETS OF THIS DOCUMENT ARE CONTROLLED DOCUMENTATION AND ARE NOT TO BE RELEASED OUTSIDE OF E&E OR ITS SUB-CONTRACTORS WITHOUT AUTHORIZATION.</p>		UNLESS OTHERWISE SPECIFIED, DIMENSIONS ARE IN INCH/mm.		APPROVALS																					
		<p align="center"><u>TOLERANCE ARE:</u></p> <table border="0"> <tr> <td>INCH</td> <td>mm</td> <td>ANGLE</td> <td></td> <td></td> <td></td> </tr> <tr> <td>.XXX ± .005</td> <td>.XX ± .13</td> <td>X.X</td> <td>0.3</td> <td>Q.A.</td> <td></td> </tr> <tr> <td>.XX ± .02</td> <td>.X ± .5</td> <td>X</td> <td>1</td> <td></td> <td></td> </tr> </table>		INCH	mm	ANGLE				.XXX ± .005	.XX ± .13	X.X	0.3	Q.A.		.XX ± .02	.X ± .5	X	1			DATE		 E & E Magnetic Products Ltd.	
		INCH	mm	ANGLE																					
		.XXX ± .005	.XX ± .13	X.X	0.3	Q.A.																			
		.XX ± .02	.X ± .5	X	1																				
DRAWN BY		W.P. CHENG		08/14/06																					
PROJ. ENG		W.P. CHENG		08/14/06																					
APPROVED BY		V. TSUI		08/14/06																					
		C.M. TSUI		08/14/06																					
				DRAWING NO./MODEL																					
				821-01856																					
				REV																					
				01																					
				SCALE																					
				DO NOT SCALE																					
				PAGE																					
				1																					
				OF																					
				4																					



MECHANICAL OUTLINE

1. Dimensions are specified in $\frac{\text{inches}}{\text{mm}}$ with higher precedence in mm.
2. Unless otherwise specified, all tolerances are $\pm .010$.
3. Coplanarity: $\frac{.004}{0.10}$ max.
4. "(DATE)" includes at least manufacturing date code (in YYWW format) plus two character country code.

5. For RoHS compliant version, 821-01856F, the part will be marked with "1-1856F", instead of "1-1856".



E & E Magnetic Products Ltd.

DRAWING NO./MODEL

821-01856

REV

01

SCALE

DO NOT SCALE

PAGE

2

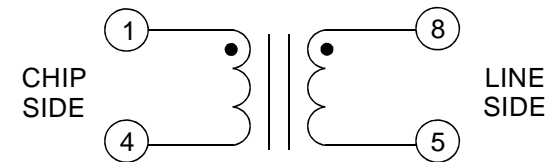
OF

4

4

ELECTRICAL SPECIFICATION @25°C:

PARAMETERS	UNIT	LIMITS
Turns Ratio(8-5):(1-4)	-	1 : 1.86 ± 2%
Polarity	-	Per Schematic
Inductance, Ls(8-5)@100kHz, 0.1Vrms	uH	340 ± 10%
LL(8-5), short 1-4@100kHz, 0.1Vrms	uH	0.7 Max
DCR(8-5), for reference only	Ω	0.75 Max
DCR(1-4), for reference only	Ω	0.4 Max
Cww(1-4):(8-5)@100kHz, 1Vrms	pF	35 Max
⁷ THD@100kHz, 2Vrms	dB	- 75 Max
Hipot(8-5):(1-4)	Vrms	1500 Min



SCHEMATIC

6. Operating temperature: 0°C to +70°C.

⁷ The transformer is designed to reflect 100Ω at line side.

8. The transformer is designed to meet the functional insulation level of EN60950 with working voltage of up to 250Vrms.



E & E Magnetic Products Ltd.

DRAWING NO./MODEL

821-01856

REV

01

SCALE

DO NOT SCALE

PAGE

OF

3

4