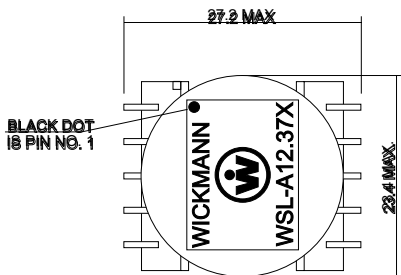
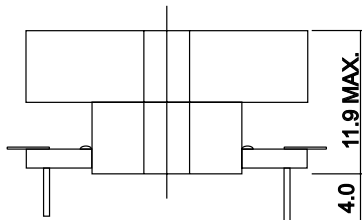


ADSL-Transformer WSL-A12.372 / WSL-A12.373 Specifications



Schematics & Mechanicals (mm)



Application
ADSL Central Office, CO
Generic Coupling Transformer

Features
Optimized magnetic shielding for low interference
High performance, high quality design
SMT and THT package available

WebLinks
Data Sheet
www.wickmann.com/products/WSL_A12372.pdf
www.wickmann.com/products/WSL_A12373.pdf

Packaging
www.wickmann.com/pack

Packaging
100 pcs./tray
7 trays/carton

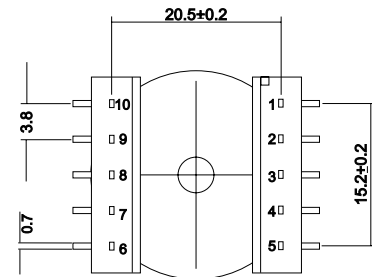
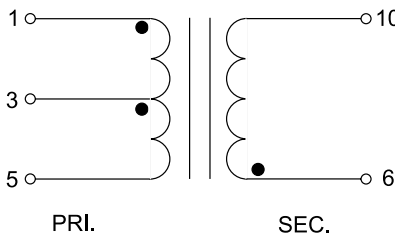
Solderability
270 - 300°C

Isolation voltage
1500 VAC

Operation Temperature Range
-40°C to +85°C

Marking
 article-no.

Unit Weight
11g



DC Resistance: Open Circuit Inductance:	WSL-A12.372 3,0 Ω (1-5) max. ±10% 4,0mH ±10% @ 1kHz, 1,0 V, 100mA	WSL-A12.373 5,0 Ω (1-5) max. ±10% 10,0mH ±10% @ 1kHz, 1,0 V, 100mA

Order Information

Qty.	Order Number
	960 4 612372 9
	960 4 612373 9