

T1G6003028-SP POWERBAND™

25W, 28V, 20MHz-6GHz, GaN RF Power Transistor



Applications

- Wideband and narrowband defense and commercial communication systems
 - General Purpose RF Power
 - Jammers
 - Radar
 - Professional radio systems
 - WiMAX
 - Wideband amplifiers
 - Test instrumentation
 - Cellular infrastructure

Product Features

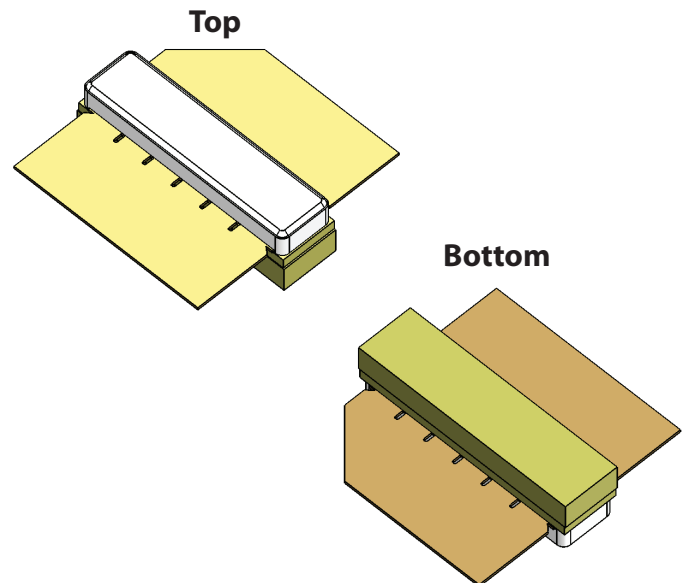
- Frequency: 20 MHz to 6 GHz
- Linear Gain: >10 dB at 6 GHz
- Operating Voltage: 28 V
- Output Power (P_{3dB}): 25 W at 6 GHz
- Lead-free and RoHS compliant
- Low thermal resistance package

General Description

The TriQuint T1G6003028-SP is a 25 W (P_{3dB}) discrete GaN on SiC HEMT which operates from 20 MHz to 6 GHz and typically provides >10 dB gain at 6 GHz. The device is constructed with TriQuint's proven 0.25 μm production process, which features advanced field plate techniques to optimize power and efficiency at high drain bias operating conditions. This optimization can potentially lower system costs in terms of fewer amplifier line-ups and lower thermal management costs.

As part of the PowerBand™ RF transistor family of products, this device is capable of wideband and narrowband operation. The T1G6003028-SP and the other PowerBand™ devices are ideal for wideband RF circuits, but designers considering a narrowband application can take advantage of the reduced size and weight offered by PowerBand™ transistors.

Available Package



Package Information

Package Type	Description	Base
SP	9mm ceramic air cavity package	CuW

Ordering Information

Material No.	Part No.	Description
1074565	T1G6003028-SP	Packaged part
1076439	T1G6003028-SP	Standard evaluation board: 500 MHz to 3 GHz
1076612	T1G6003028-SP	Standard evaluation board: 2.5 GHz to 6 GHz

T1G6003028-SP **POWERBAND™**

25W, 28V, 20MHz-6GHz, GaN RF Power Transistor



Specifications

Absolute Maximum Ratings

Sym	Parameter	Value
V ⁺	Positive Supply Value	32
V ⁻	Negative Supply Voltage Range	- 10 V to 0 V
I	Positive Supply Current	10A
I _G	Gate Supply Current	50 mA
P _D	Power Dissipation	41.5 W
T _{CH}	Operating Channel Temperature	225°C

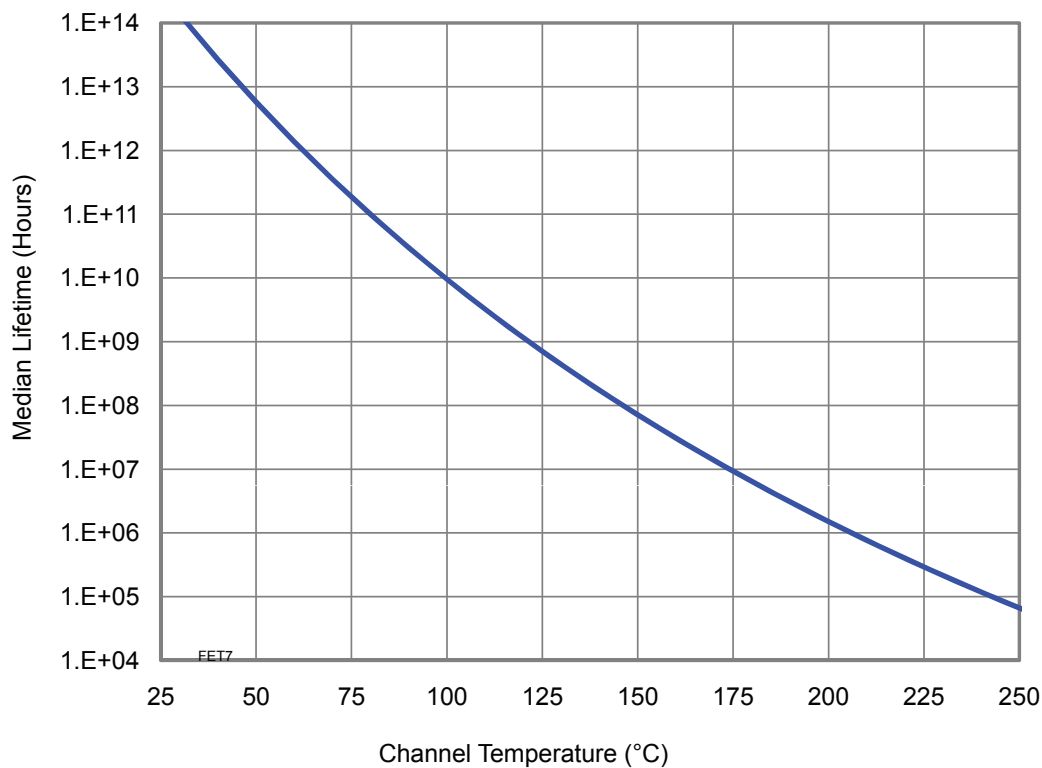
Operation of this device outside the parameter ranges given above may cause permanent damage.

Thermal Information

Test Conditions	T _{CH} (°C)	*θ _{JC} (°C/W)
DC at 85°C Base	202	4.8

*Thermal Resistance (channel to backside of carrier)

Lifetime Median Curve



T1G6003028-SP **POWERBAND™**

25W, 28V, 20MHz-6GHz, GaN RF Power Transistor



Electrical Specifications

Recommended operating conditions apply unless otherwise specified: $T_A = 25^\circ\text{C}$

DC Characteristics

Characteristics	Symbol	Min	Typ	Max	Unit	Conditions
Break-Down Voltage Drain Source	$B_{V_{DSX}}$	85	120		V	$V_{GS} = -8\text{ V}, I_D = 4\text{ mA}$
Gate Quiescent Voltage	$V_{GS(Q)}$		-3.2		V	$V_{DS} = 28\text{ V}; I_{DQ} = 0.4\text{ A}$
Gate Threshold Voltage	$V_{GS(th)}$		-3.5		V	$V_{DS} = 10\text{ V}; I_D = 20\text{ mA}$
Saturated Drain Current	I_{DSX}		7		A	$V_{DS} = 5\text{ V}; V_{GS} = 0\text{ V}$

RF Characteristics

Characteristics	Symbol	Min	Typ	Max	Unit
Functional Tests, Instantaneous Bandwidth (Tested in TriQuint's Eval Board, 5.3 GHz to 5.9 GHz, 100uS, 20%)					
Gain @ P_{2dB} 5.3 GHz to 5.9 GHz ($V_{DS} = 28\text{ V}, P_{out} = 25\text{ W}, I_{DQ} = 150\text{ mA}$)		7.5	8		dB
P_{2dB} 5.3 GHz to 5.9 GHz ($V_{DS} = 28\text{ V}, P_{out} = 25\text{ W}, I_{DQ} = 150\text{ mA}$)		25	28		W
Power Added Efficiency, 5.3 GHz to 5.9 GHz ($V_{DS} = 28\text{ V}, P_{out} = 25\text{ W}, I_{DQ} = 150\text{ mA}$)		47	50		%
Functional Tests, Narrow Band EVB RF Performance (6 GHz), CW					
Linear Gain ($V_{DS} = 28\text{ V}, G_{LIN} = G_{3dB} + 3\text{ dB}, I_{DQ} = 100\text{ mA}$), CW	G_{LIN}	10.0	10.5		dB
Output Power at 3 dB Gain Compression ($V_{DS} = 28\text{ V}, G = G_{3dB}, I_{DQ} = 100\text{ mA}$), CW	P_{3dB}	22.5	25.0		W
Drain Efficiency at 3 dB Gain Compression ($V_{DS} = 28\text{ V}, P_{out} = P_{3dB}, I_{DQ} = 100\text{ mA}$), CW	DE_{3dB}	41.5	47.5		%
Power-Added Efficiency at 3 dB Gain Compression ($V_{DS} = 28\text{ V}, P_{out} = P_{3dB}, I_{DQ} = 100\text{ mA}$), CW	PAE_{3dB}	34.0	39.0		%
Gain at 3 dB Compression ($V_{DS} = 28\text{ V}, P_{out} = P_{3dB}, I_{DQ} = 100\text{ mA}$), CW	G_{3dB}	7.0	7.5		dB
Impedance Mismatch Ruggedness ($V_{DS} = 28\text{ V}, P_{in}$ for $P_{out} = P_{3dB}, I_{DQ} = 100\text{ mA}, VSWR = \text{TBD}$, all angles)		No degradation in output power			

T1G6003028-SP **POWERBAND™**

25W, 28V, 20MHz-6GHz, GaN RF Power Transistor



Electrical Specifications (continued)

Recommended operating conditions apply unless otherwise specified: $T_A = 25^\circ\text{C}$

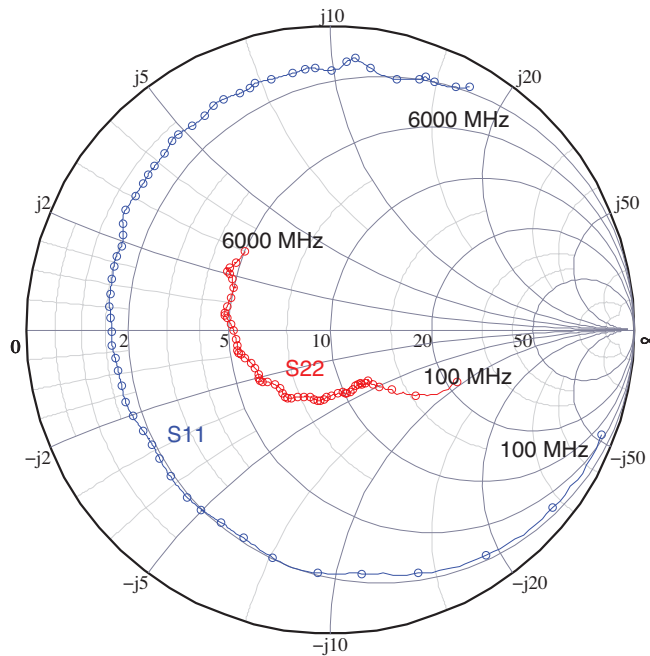
RF Characteristics

Characteristics	Symbol	Min	Typ	Max	Unit
Functional Tests, Narrow Band EVB RF Performance (3.5 GHz), CW					
Linear Gain ($V_{DS}=28\text{ V}$, $G_{LIN} = G_{3dB} + 3\text{ dB}$, $I_{DQ}=100\text{ mA}$), CW	G_{LIN}	13.5	14.0		dB
Output Power at 3 dB Gain Compression ($V_{DS}=28\text{ V}$, $G = G_{3dB}$, $I_{DQ}=100\text{ mA}$), CW	P_{3dB}	28.0	33.0		W
Drain Efficiency at 3 dB Gain Compression ($V_{DS}=28\text{ V}$, $P_{out} = P_{3dB}$, $I_{DQ}=100\text{ mA}$), CW	DE_{3dB}	53.0	56.0		%
Power-Added Efficiency at 3 dB Gain Compression ($V_{DS}=28\text{ V}$, $P_{out} = P_{3dB}$, $I_{DQ}=100\text{ mA}$), CW	PAE_{3dB}	48.0	51.5		%
Gain at 3 dB Compression ($V_{DS}=28\text{ V}$, $P_{out} = P_{3dB}$, $I_{DQ}=100\text{ mA}$), CW	G_{3dB}	10.5	11.0		dB
Impedance Mismatch Ruggedness ($V_{DS}=28\text{ V}$, P_{in} for $P_{out} = P_{3dB}$, $I_{DQ}=100\text{ mA}$, VSWR=TBD, all angles)		No degradation in output power			

Device Characterization Data

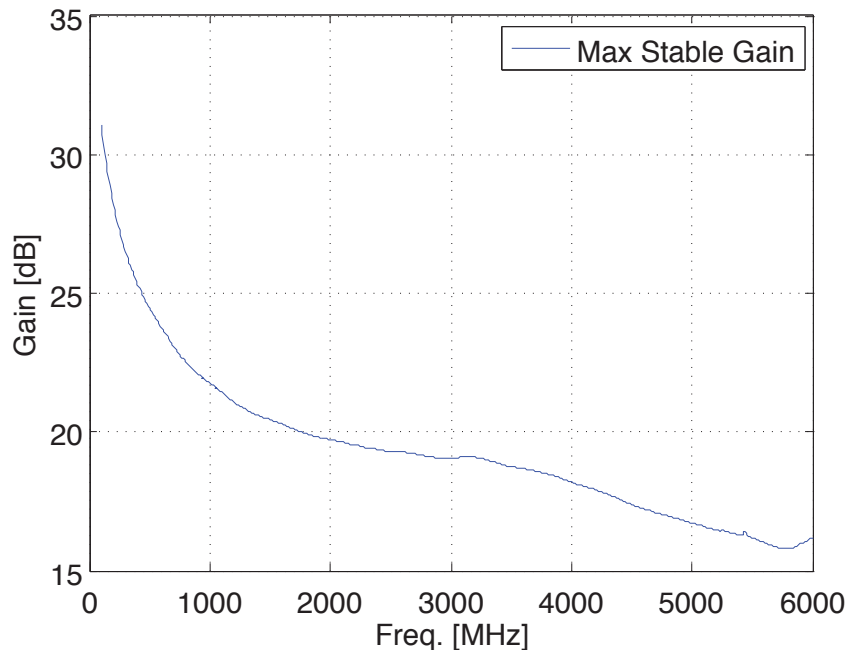
S-Parameter Smith Chart

T1G6003028-SP, 28V, 100mA



Small Signal Gain

T1G6003028-SP



T1G6003028-SP **POWERBAND™**

25W, 28V, 20MHz-6GHz, GaN RF Power Transistor



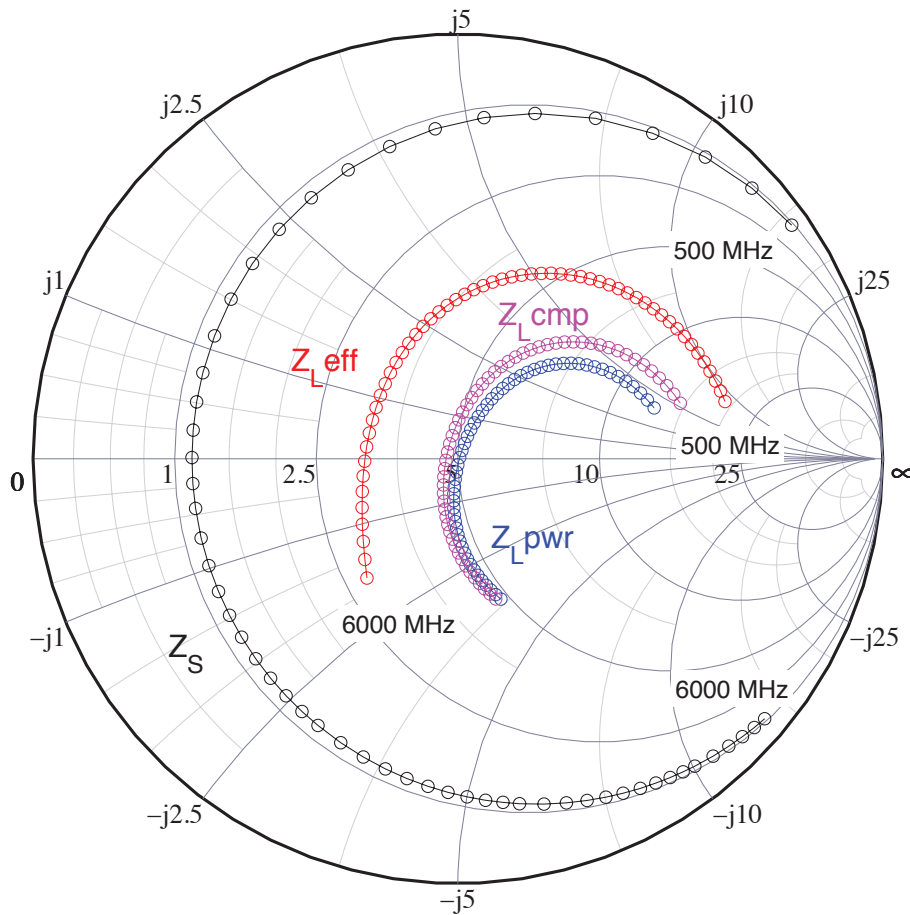
S-Parameter Data

Freq. [GHz]	Real S11	Imag S11	Real S21	Imag S21	Real S12	Imag S12	Real S22	Imag S22
0.1	0.056	-0.882	-14.601	14.243	0.011	0.012	-0.374	-0.180
0.2	-0.471	-0.786	-6.123	12.562	0.019	0.010	-0.508	-0.178
0.3	-0.692	-0.608	-2.603	9.694	0.021	0.007	-0.559	-0.142
0.4	-0.782	-0.474	-1.077	7.710	0.022	0.005	-0.584	-0.128
0.5	-0.826	-0.387	-0.303	6.323	0.022	0.004	-0.596	-0.120
0.6	-0.861	-0.331	0.186	5.294	0.022	0.003	-0.604	-0.109
0.7	-0.881	-0.274	0.417	4.520	0.022	0.003	-0.604	-0.110
0.8	-0.890	-0.235	0.564	3.945	0.022	0.002	-0.610	-0.113
0.9	-0.898	-0.205	0.673	3.474	0.022	0.001	-0.619	-0.113
1.0	-0.907	-0.183	0.766	3.090	0.021	0.001	-0.627	-0.111
1.1	-0.912	-0.164	0.818	2.847	0.021	0.001	-0.623	-0.111
1.2	-0.916	-0.139	0.848	2.557	0.021	0.001	-0.632	-0.112
1.3	-0.918	-0.120	0.877	2.321	0.021	0.000	-0.639	-0.117
1.4	-0.920	-0.105	0.905	2.129	0.020	0.000	-0.647	-0.122
1.5	-0.924	-0.090	0.924	1.957	0.020	0.000	-0.652	-0.122
1.6	-0.929	-0.075	0.930	1.798	0.019	0.000	-0.656	-0.120
1.7	-0.931	-0.062	0.925	1.655	0.019	0.000	-0.661	-0.118
1.8	-0.932	-0.048	0.924	1.528	0.018	0.000	-0.670	-0.118
1.9	-0.933	-0.034	0.916	1.412	0.018	0.000	-0.681	-0.118
2.0	-0.935	-0.024	0.915	1.303	0.017	0.000	-0.690	-0.119
2.1	-0.937	-0.014	0.921	1.209	0.017	0.000	-0.697	-0.120
2.2	-0.937	-0.001	0.923	1.117	0.016	0.000	-0.703	-0.121
2.3	-0.938	0.010	0.905	1.034	0.016	0.000	-0.707	-0.119
2.4	-0.939	0.019	0.886	0.965	0.015	0.000	-0.712	-0.116
2.5	-0.940	0.030	0.874	0.912	0.015	0.001	-0.718	-0.110
2.6	-0.940	0.042	0.871	0.854	0.014	0.001	-0.726	-0.107
2.7	-0.940	0.053	0.859	0.779	0.014	0.001	-0.737	-0.105
2.8	-0.940	0.062	0.841	0.714	0.013	0.001	-0.747	-0.103
2.9	-0.938	0.071	0.830	0.664	0.013	0.001	-0.752	-0.103
3.0	-0.938	0.081	0.812	0.630	0.013	0.002	-0.754	-0.099
3.1	-0.942	0.090	0.794	0.600	0.012	0.002	-0.757	-0.093
3.2	-0.943	0.101	0.794	0.576	0.012	0.003	-0.759	-0.085
3.3	-0.940	0.115	0.794	0.542	0.012	0.003	-0.766	-0.079
3.4	-0.938	0.128	0.777	0.500	0.011	0.004	-0.774	-0.074
3.5	-0.938	0.137	0.762	0.463	0.011	0.004	-0.781	-0.071
3.6	-0.936	0.147	0.763	0.435	0.011	0.005	-0.784	-0.069
3.7	-0.934	0.161	0.763	0.412	0.011	0.005	-0.785	-0.066
3.8	-0.935	0.173	0.755	0.390	0.010	0.006	-0.786	-0.060
3.9	-0.934	0.182	0.749	0.366	0.010	0.007	-0.788	-0.052
4.0	-0.928	0.196	0.749	0.341	0.010	0.007	-0.793	-0.043
4.1	-0.925	0.212	0.738	0.320	0.010	0.008	-0.799	-0.036
4.2	-0.925	0.224	0.727	0.298	0.010	0.008	-0.805	-0.032
4.3	-0.922	0.237	0.730	0.274	0.010	0.009	-0.808	-0.029
4.4	-0.915	0.253	0.737	0.250	0.010	0.009	-0.808	-0.026
4.5	-0.911	0.266	0.730	0.229	0.010	0.010	-0.808	-0.020
4.6	-0.911	0.273	0.718	0.211	0.010	0.010	-0.810	-0.011
4.7	-0.904	0.290	0.724	0.194	0.010	0.011	-0.812	-0.001
4.8	-0.894	0.315	0.730	0.179	0.010	0.011	-0.816	0.008
4.9	-0.889	0.331	0.719	0.160	0.010	0.012	-0.821	0.014
5.0	-0.884	0.342	0.720	0.135	0.010	0.012	-0.824	0.017
5.1	-0.870	0.360	0.733	0.110	0.010	0.013	-0.824	0.021
5.2	-0.870	0.384	0.736	0.104	0.010	0.013	-0.822	0.028
5.3	-0.869	0.398	0.734	0.087	0.010	0.014	-0.818	0.039
5.4	-0.846	0.412	0.746	0.057	0.011	0.014	-0.816	0.052
5.5	-0.811	0.443	0.767	0.016	0.011	0.015	-0.820	0.062
5.6	-0.794	0.483	0.769	0.004	0.011	0.016	-0.824	0.069
5.7	-0.794	0.496	0.759	-0.014	0.012	0.016	-0.827	0.071
5.8	-0.779	0.507	0.769	-0.049	0.013	0.016	-0.826	0.075
5.9	-0.753	0.549	0.803	-0.072	0.013	0.016	-0.820	0.083
6.0	-0.745	0.581	0.817	-0.087	0.012	0.016	-0.812	0.100

Device Characterization Data

Load-Pull Data

Test conditions: $V_{DD} = 28\text{ V}$, $I_{DQ} = 100\text{ mA}$, Test signal = CW



RF performance that the device typically exhibits when placed in the specified impedance environment. The impedances are not the impedances of the device, they are the impedances presented to the device via an RF circuit or load-pull system

T1G6003028-SP **POWERBAND™**

25W, 28V, 20MHz-6GHz, GaN RF Power Transistor

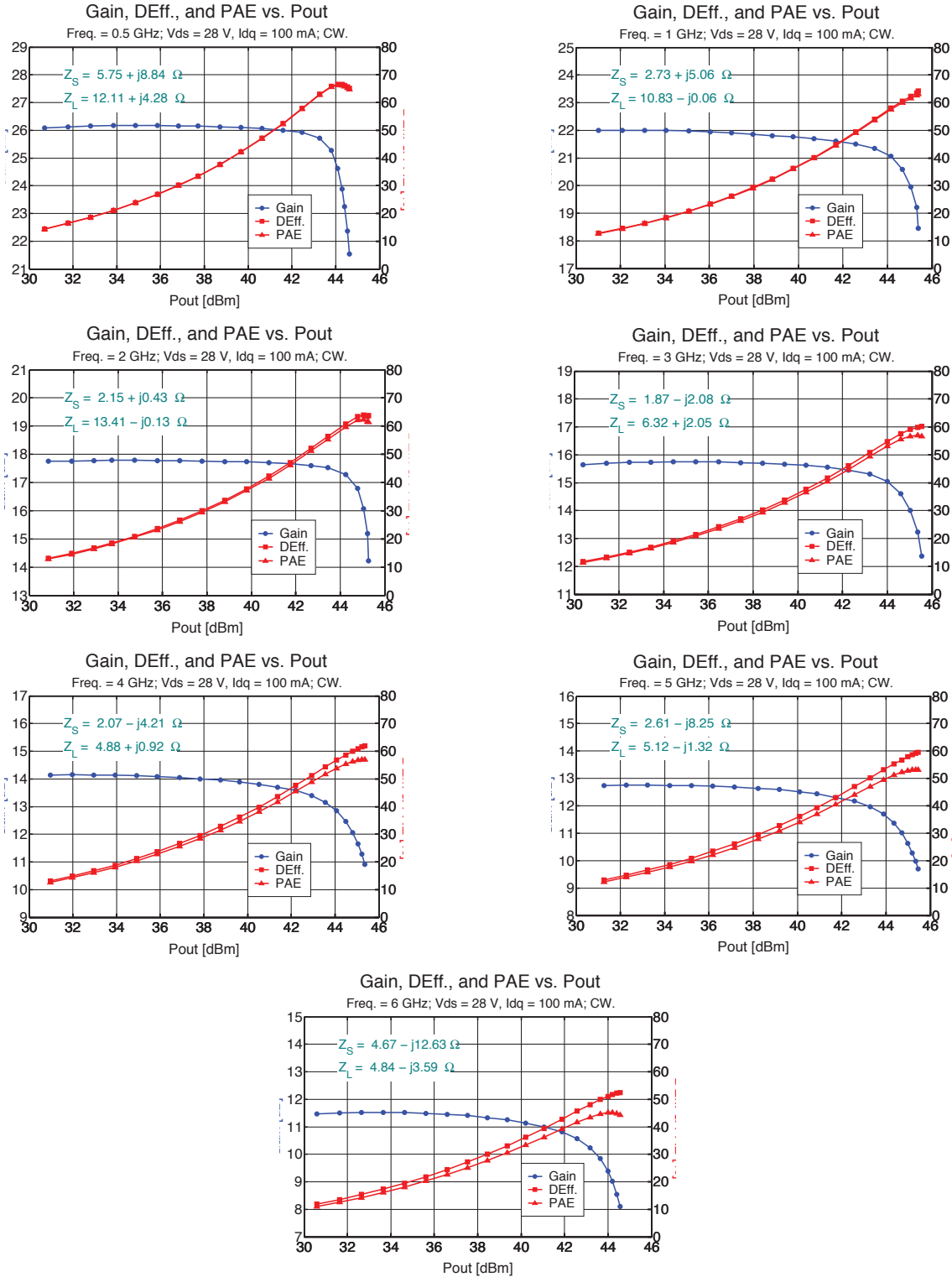


Load-Pull Data

Freq. [GHz]	Real(ZS)	Imag(ZS)	Real(ZL)	Imag(ZL)	G3dB [dB]	P3dB [dBm]	P3dB [W]	PAE [%]
0.5	1.15	15.79	14.54	5.36	23.2	44.5	28.2	65.9
0.6	1.15	12.72	13.57	5.74	21.9	44.7	29.5	62.2
0.7	1.15	10.46	12.66	5.97	20.8	44.9	30.9	60.4
0.8	1.15	8.71	11.82	6.08	20.0	45.1	32.4	60.2
0.9	1.15	7.29	11.07	6.09	19.4	45.1	32.4	61.2
1.0	1.15	6.11	10.38	6.04	19.0	45.3	33.9	62.9
1.1	1.15	5.27	9.78	5.93	18.7	45.4	34.7	65.1
1.2	1.15	4.54	9.23	5.78	18.4	45.6	36.3	67.4
1.3	1.15	3.89	8.75	5.61	18.1	45.7	37.2	69.4
1.4	1.15	3.32	8.32	5.41	17.8	45.7	37.2	70.7
1.5	1.15	2.81	7.93	5.20	17.4	45.7	37.2	71.0
1.6	1.15	2.34	7.59	4.99	16.9	45.6	36.3	70.0
1.7	1.15	1.91	7.29	4.77	16.2	45.5	35.5	68.0
1.8	1.15	1.51	7.01	4.54	15.6	45.4	34.7	65.7
1.9	1.15	1.13	6.77	4.32	15.1	45.3	33.9	63.3
2.0	1.15	0.78	6.55	4.09	14.7	45.3	33.9	61.3
2.1	1.15	0.51	6.35	3.86	14.5	45.3	33.9	60.3
2.2	1.15	0.25	6.18	3.64	14.4	45.4	34.7	60.0
2.3	1.15	0.01	6.02	3.42	14.5	45.5	35.5	60.1
2.4	1.15	-0.22	5.88	3.19	14.5	45.5	35.5	60.3
2.5	1.15	-0.45	5.75	2.98	14.4	45.6	36.3	60.3
2.6	1.15	-0.72	5.63	2.76	14.2	45.6	36.3	59.9
2.7	1.15	-0.98	5.52	2.54	13.9	45.6	36.3	59.2
2.8	1.15	-1.23	5.42	2.33	13.5	45.6	36.3	58.4
2.9	1.15	-1.47	5.34	2.12	13.1	45.5	35.5	57.5
3.0	1.15	-1.71	5.25	1.92	12.7	45.5	35.5	56.8
3.1	1.15	-1.96	5.18	1.71	12.3	45.5	35.5	56.4
3.2	1.15	-2.21	5.11	1.51	12.0	45.4	34.7	56.1
3.3	1.15	-2.44	5.05	1.31	11.8	45.5	35.5	56.0
3.4	1.15	-2.68	4.99	1.11	11.6	45.5	35.5	56.0
3.5	1.15	-2.90	4.94	0.91	11.4	45.5	35.5	56.1
3.6	1.15	-3.22	4.89	0.72	11.3	45.5	35.5	56.1
3.7	1.15	-3.53	4.84	0.53	11.2	45.4	34.7	56.5
3.8	1.15	-3.84	4.80	0.34	11.2	45.3	33.9	56.7
3.9	1.15	-4.14	4.76	0.15	11.1	45.4	34.7	56.9
4.0	1.15	-4.43	4.73	-0.03	11.1	45.3	33.9	56.9
4.1	1.15	-4.72	4.69	-0.22	11.0	45.3	33.9	56.9
4.2	1.15	-5.01	4.66	-0.40	10.9	45.2	33.1	56.8
4.3	1.15	-5.29	4.64	-0.58	10.8	45.2	33.1	56.6
4.4	1.15	-5.56	4.61	-0.75	10.7	45.2	33.1	56.3
4.5	1.15	-5.84	4.59	-0.93	10.5	45.3	33.9	56.0
4.6	1.15	-6.27	4.58	-1.10	10.4	45.4	34.7	55.5
4.7	1.15	-6.69	4.56	-1.27	10.2	45.4	34.7	55.1
4.8	1.15	-7.11	4.55	-1.44	10.1	45.4	34.7	54.5
4.9	1.15	-7.52	4.54	-1.61	9.9	45.4	34.7	53.8
5.0	1.15	-7.93	4.54	-1.78	9.7	45.4	34.7	53.2
5.1	1.15	-8.36	4.54	-1.95	9.5	45.5	35.5	52.4
5.2	1.15	-8.80	4.54	-2.12	9.4	45.5	35.5	51.6
5.3	1.15	-9.22	4.55	-2.29	9.2	45.4	34.7	50.8
5.4	1.15	-9.65	4.56	-2.45	9.0	45.4	34.7	50.0
5.5	1.15	-10.07	4.58	-2.62	8.9	45.3	33.9	49.1
5.6	1.15	-10.78	4.60	-2.80	8.8	45.1	32.4	48.2
5.7	1.15	-11.48	4.62	-2.97	8.7	45.1	32.4	47.4
5.8	1.15	-12.18	4.64	-3.15	8.6	44.9	30.9	46.5
5.9	1.15	-12.87	4.67	-3.33	8.5	44.7	29.5	45.7
6.0	1.15	-13.55	4.70	-3.52	8.5	44.4	27.5	44.8

Typical Performance: Gain, Efficiency and Output Power

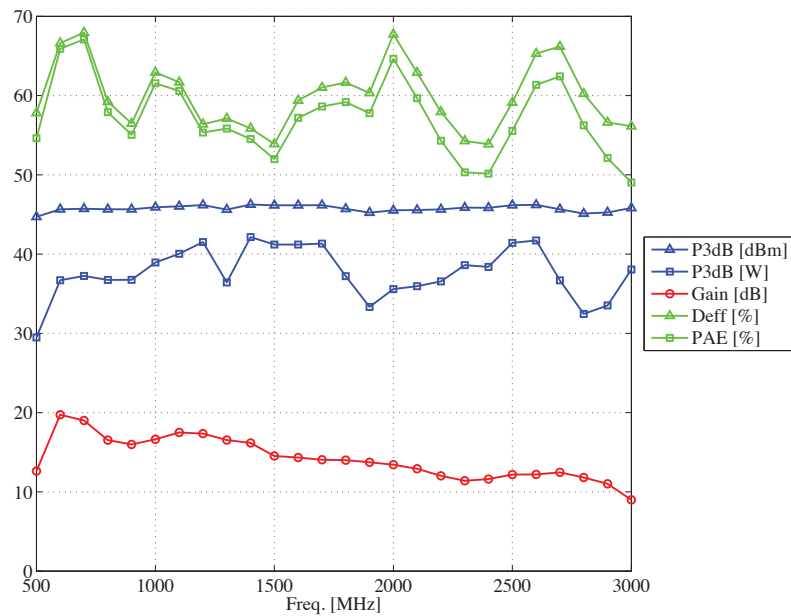
Performance is measured at DUT reference plane.



Typical Instantaneous Wide-Band Performance

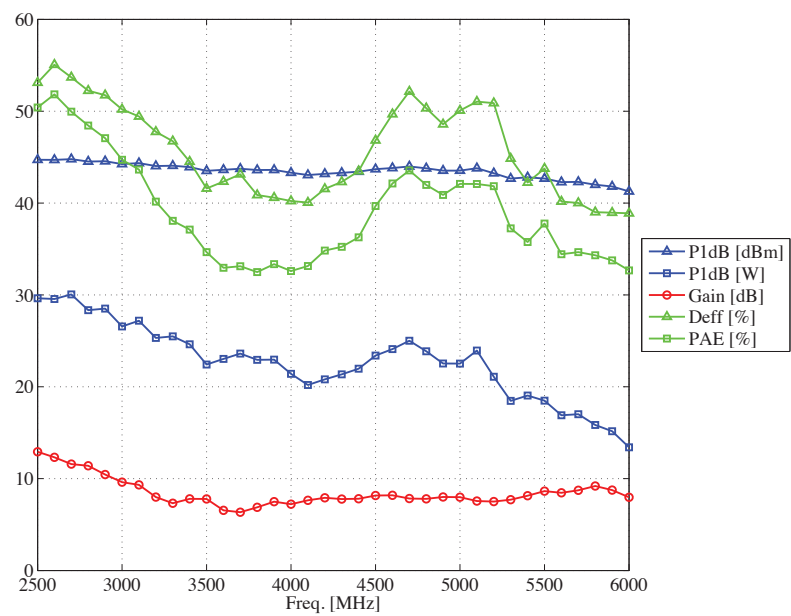
Evaluation Board Performance 500 MHz to 3 GHz

T1G6003028-SP Low Band Evaluation Board
 Bias: Vd=28V, IDQ=100 mA, CW 3dB Compression



Evaluation Board Performance 2.5 GHz to 6 GHz

T1G6003028-SP High Band Evaluation Board
 Bias: Vd=28V, IDQ=100 mA, CW 1dB Compression



T1G6003028-SP **POWERBAND™**

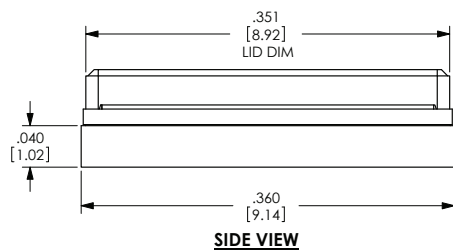
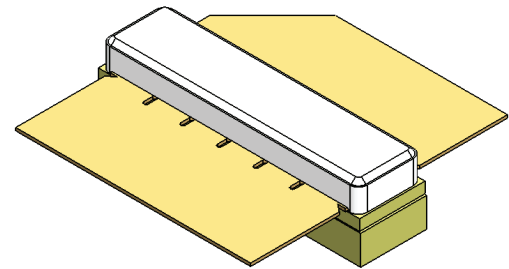
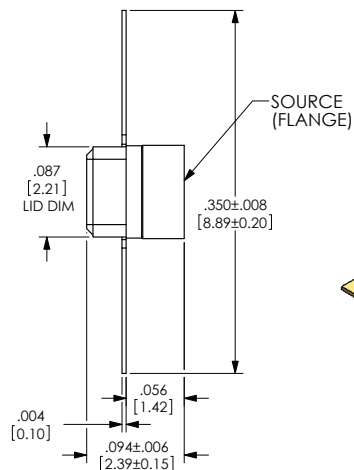
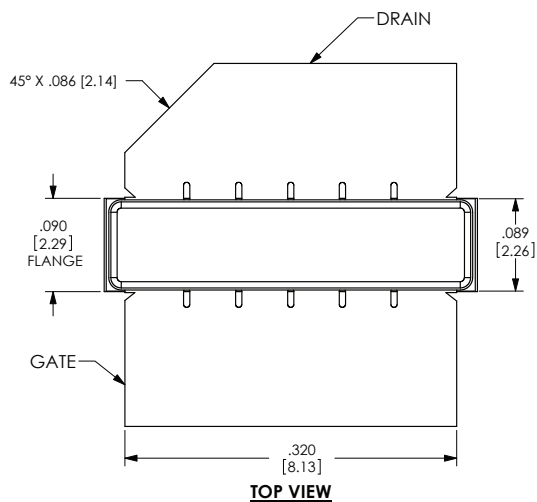
25W, 28V, 20MHz-6GHz, GaN RF Power Transistor



Mechanical Information

Package Information and Dimensions

This package is lead-free/ROHS-compliant.



ALL DIMENSIONS ARE IN INCHES [mm]
UNLESS OTHERWISE SPECIFIED

TOLERANCES	
DECIMALS	ANGULAR
.XX ±0.01 [.25]	.X ±0.5
.XXX ±0.003 [.08]	

Contact Information

For the latest specifications, additional product information, worldwide sales and distribution locations, and information about TriQuint:

Web: www.triquint.com

Important Notice

The information contained herein is believed to be reliable. TriQuint makes no warranties regarding the information contained herein. TriQuint assumes no responsibility or liability whatsoever for any of the information contained herein. TriQuint assumes no responsibility or liability whatsoever for the use of the information contained herein. The information contained herein is provided "AS IS, WHERE IS" and with all faults, and the entire risk associated with such information is entirely with the user. All information contained herein is subject to change without notice. Customers should obtain and verify the latest relevant information before placing orders for TriQuint products. The information contained herein or any use of such information does not grant, explicitly or implicitly, to any party any patent rights, licenses, or any other intellectual property rights, whether with regard to such information itself or anything described by such information.

TriQuint products are not warranted or authorized for use as critical components in medical, life-saving, or life-sustaining applications, or other applications where a failure would reasonably be expected to cause severe personal injury or death.