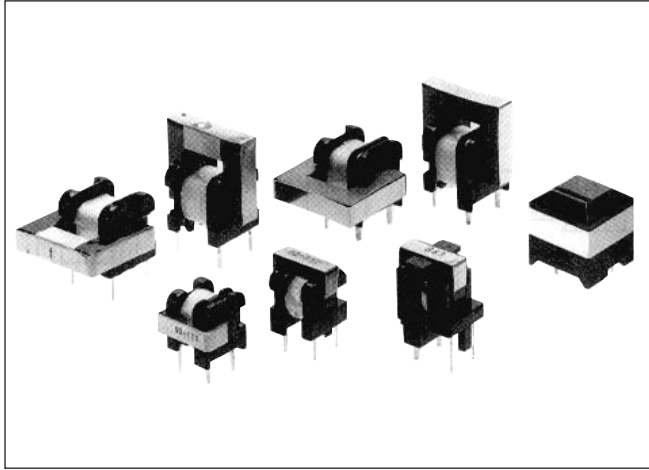


# Current Transformers



## Outline

TOKIN current transformers are compact, highly sensitive AC current detectors for mounting on printed circuit boards.

## Features

- Compact, inexpensive, and have high output voltages.
- Broad-frequency bandwidths (50 Hz to 100 kHz).
- Easy mounting on printed circuit boards.
- Use flame-retardant materials (UL94V-0 class).

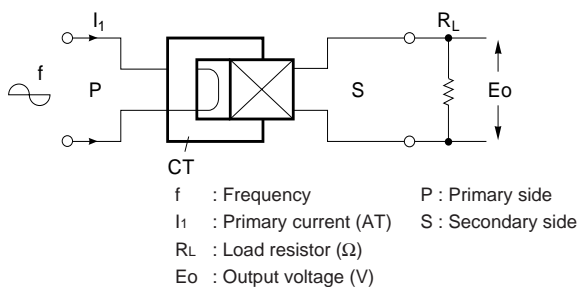
## Applications

- Electromagnetic cooking appliances, microwave ovens, air-conditioners and other home appliances
- Current regulation in OA equipment and industrial equipment
- High-frequency switching power supplies

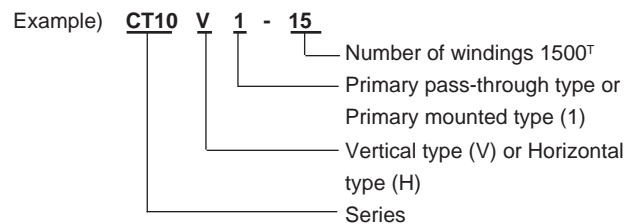
## Product Names and Composition

	Primary pass-through type		Primary mounted type	
	Vertical type	Horizontal type	Vertical type	Horizontal type
<b>CT10 Series</b>	–	–	CT10V1-02	CT10H1-02
	–	–	CT10V1-15	CT10H1-15
	–	–	CT10V1-10S	–
<b>CT19 Series</b>	–	–	–	CT19H1-40
<b>CT25 Series</b>	CT25V-30	CT25H-30	CT25V1-30	CT25H1-30

## Output Voltage Measurement Circuit



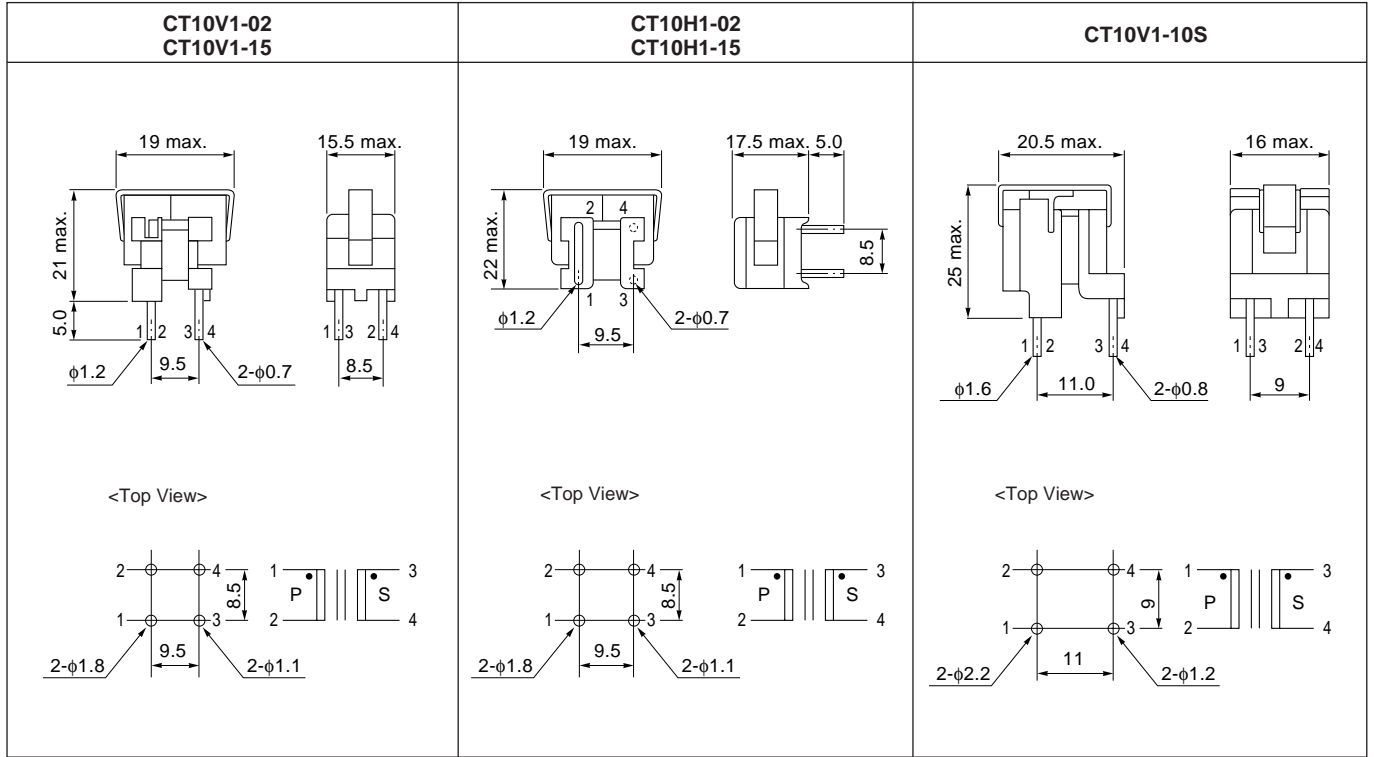
## Markings



# CT-10 Series

## Shape and Dimensions

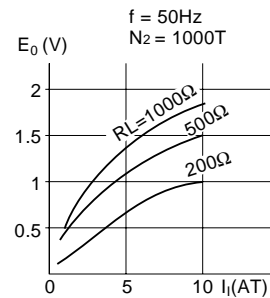
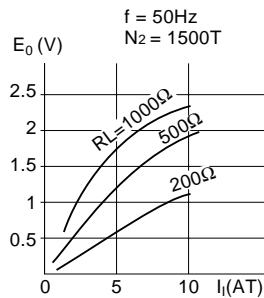
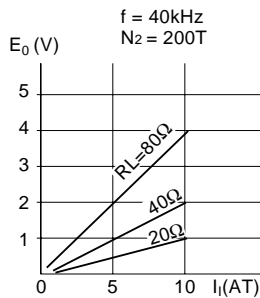
(mm)



## Characteristics and Specifications

Product name	CT10V1-02 CT10H1-02	CT10V1-15 CT10H1-15	CT10V1-10S
Direct current resistance ( $\Omega$ ) max.	3.9	230	160
Insulation withstand voltage (VAC/1 min)	1500 / 1 min. resist (inter-coil, between coil and core)		3750 / 1 min. resist (inter-coil, between coil and core)
Insulation resistance ( $M\Omega$ ) min.	100 at 500 VDC mega (inter-coil, between coil and core)		
Safety standard (s) met	UL		UL, IEC, VDE

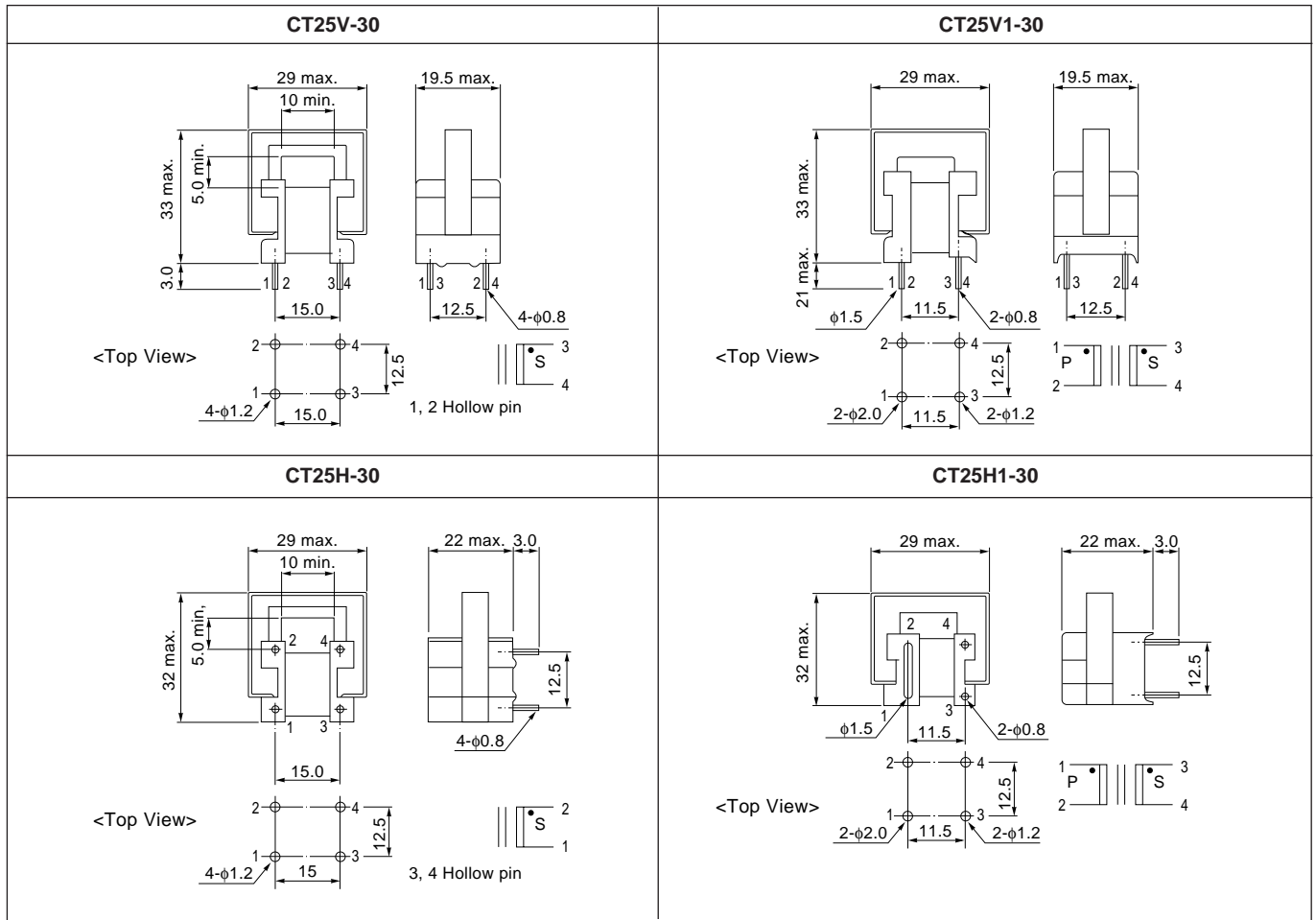
## Output Voltage Characteristics



CT-25 Series

Shape and Dimensions

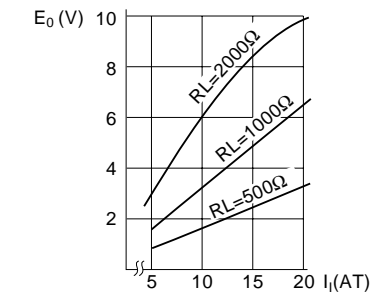
(mm)



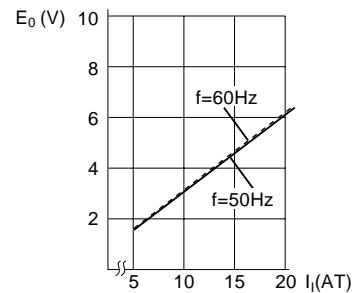
Characteristics and Specifications

Product name	CT25V-30 CT25H-30	CT25V1-30 CT25H1-30
Direct current resistance (Ω) max.	600	620
Insulation withstand voltage (VAC/1 min)	1500 VAC / 1 min. resist (inter-coil, between coil and core)	1500 VAC / 1 min. resist (inter-coil, between coil and core)
Insulation resistance (MΩ) min.	100 at 500 VDC mega (inter-coil, between coil and core)	100MΩ / min. at 500 VDC mega (inter-coil, between coil and core)
Safety standard (s) met	UL	UL

Output Voltage Characteristics



Output voltage characteristics (f=50 Hz) according to differences in terminal resistance (RL)



Output voltage characteristics (RL = 1000Ω) according to differences in wave frequency

