

The ITS23C06 is a robust n-channel, enhancement mode insulated gate bipolar transistor (IGBT) designed for low power dissipation in a wide range of high voltage applications such as power supplies and motor drives. The high impedance gate simplifies gate drive considerations, allowing operation directly from low power control circuitry.

Fast rise and fall times allow very high frequency switching making the device suitable for modern systems employing high frequency switching.

Low saturation voltages minimise power dissipation, thereby reducing the cost of the overall system in which they are used.

The ITS is fully short circuit rated making it especially suited for motor control and other applications requiring short circuit with stand capacity. Each device in the Powerline range is available with or without an integral anti-parallel ultrafast soft recovery diode, see separate datasheet for discrete device

Typical applications include high frequency inverters for motor control, welding and heating apparatus. The Powerline range of IGBTs is also applicable to switched mode and uninterruptible power supplies.

### FEATURES

- Enhancement Mode n-Channel Device
- High Switching Speed
- Low On-state Saturation Voltage
- High Input Impedance Simplifies Gate Drive
- Latch-Free Operation
- Short Circuit Rated
- Integral Fast Recovery Diode

### APPLICATIONS

- High Frequency Inverters
- Motor Control
- Switched Mode Power Supplies
- High Frequency Welding
- Heating/Cooking Apparatus

### ORDERING INFORMATION

ITS23C06P TO247 (with fast recovery diode)

### KEY PARAMETERS

$V_{CES}$	(max)	600V
$V_{CE(sat)}$	(typ)	2.0V
$I_{C25}$	(max)	40A
$I_{C85}$	(max)	23A
$I_{CM}$	(max)	46A
$t_{sc}$	(max)	10µs

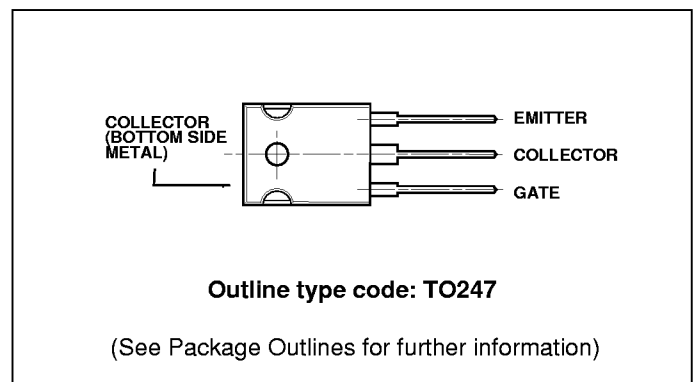


Fig.1 Pin connections - top view (not to scale)

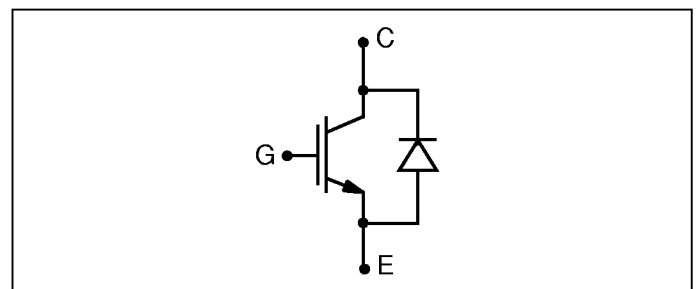


Fig.2 ITS23C06 circuit

**ABSOLUTE MAXIMUM RATINGS**

Stresses above those listed under 'Absolute Maximum Ratings' may cause permanent damage to the device. This is a stress rating only and functional operation of the device at these or any other conditions above those indicated in the operational sections of this specification is not implied. Exposure to Absolute Maximum Ratings for extended periods may affect device reliability.

$T_{case} = 25^{\circ}\text{C}$  unless stated otherwise.

Symbol	Parameter	Test Conditions	Max.	Units
$V_{CES}$	Collector-emitter voltage	$V_{GE} = 0\text{V}$	600	V
$V_{GES}$	Gate-emitter voltage	-	$\pm 20$	V
$I_{C25}$	Continuous collector current	$T_{case} = 25^{\circ}\text{C}$	40	A
$I_{C85}$	Continuous collector current	$T_{case} = 85^{\circ}\text{C}$	23	A
$I_{CM}$	Pulsed collector current	1ms, $T_{case} = 85^{\circ}\text{C}$	46	A
$P_{tot}$	Power dissipation	$T_{case} = 85^{\circ}\text{C}$	80	W

**THERMAL AND MECHANICAL RATINGS**

Symbol	Parameter	Conditions	Min.	Max.	Units
$R_{th(j-c)}$	Thermal resistance - IGBT	DC junction to case	-	0.8	$^{\circ}\text{C}/\text{W}$
$R_{th(j-c)}$	Thermal resistance - Diode	DC junction to case	-	1.8	$^{\circ}\text{C}/\text{W}$
$T_{OP}$	Operating junction temperature range	-	-40	150	$^{\circ}\text{C}$
$T_{stg}$	Storage temperature range	-	-40	150	$^{\circ}\text{C}$
-	Mounting torque	M3 screw	-	1.1	Nm

**DC ELECTRICAL CHARACTERISTICS**

$T_{case} = 25^{\circ}\text{C}$  unless stated otherwise.

Symbol	Parameter	Conditions	Min.	Typ.	Max.	Units
$I_{CES}$	Collector cut-off current	$V_{GE} = 0\text{V}, V_{CE} = 600\text{V}$	-	-	1	mA
$I_{GES}$	Gate leakage current	$V_{GE} = 20\text{V}, V_{CE} = 0\text{V}$	-	-	$\pm 500$	nA
$V_{GE(TH)}$	Gate threshold voltage	$I_C = 1\text{mA}, V_{CE} = V_{GE}$	4	6	7.5	V
$V_{CE(SAT)}$	Collector-emitter saturation voltage	$V_{GE} = 15\text{V}, I_C = 23\text{A}$	-	2.0	2.6	V
		$V_{GE} = 15\text{V}, I_C = 23\text{A}, T_j = 125^{\circ}\text{C}$	-	2.2	-	V

## AC ELECTRICAL CHARACTERISTICS

$T_{\text{case}} = 25^{\circ}\text{C}$  unless stated otherwise.

Symbol	Parameter	Conditions	Min.	Typ.	Max.	Units
$C_{\text{ies}}$	Input capacitance	$V_{\text{CE}} = 25\text{V}, V_{\text{GE}} = 15\text{V}, f = 1\text{MHz}$	-	2000	-	pF
$C_{\text{oes}}$	Output capacitance	$V_{\text{CE}} = 25\text{V}, V_{\text{GE}} = 15\text{V}, f = 1\text{MHz}$	-	520	-	pF
$C_{\text{res}}$	Reverse transfer capacitance	$V_{\text{CE}} = 25\text{V}, V_{\text{GE}} = 15\text{V}, f = 1\text{MHz}$	-	450	-	pF

## INDUCTIVE SWITCHING CHARACTERISTICS - see figures 3 to 5

$T_{\text{case}} = 25^{\circ}\text{C}$  unless stated otherwise.

Symbol	Parameter	Conditions	Min.	Typ.	Max.	Units
$t_{\text{d(ON)}}$	Turn-on delay time	$I_{\text{C}} = 23\text{A},$ $V_{\text{GE}} = \pm 15\text{V},$ $V_{\text{CE}} = 50\%V_{\text{CES}}$ $R_{\text{G(ON)}} = R_{\text{G(OFF)}} = 25\Omega$	-	200	-	ns
$t_{\text{r}}$	Rise time		-	32	-	ns
$E_{\text{ON}}$	Turn-on energy loss - per cycle		-	0.4	-	mJ
$t_{\text{d(OFF)}}$	Turn-off delay time		-	300	-	ns
$t_{\text{f}}$	Fall time		-	270	500	ns
$E_{\text{OFF}}$	Turn-off energy loss - per cycle		-	1.6	-	mJ

$T_{\text{case}} = 125^{\circ}\text{C}$  unless stated otherwise.

$t_{\text{d(ON)}}$	Turn-on delay time	$I_{\text{C}} = 23\text{A},$ $V_{\text{GE}} = \pm 15\text{V},$ $V_{\text{CE}} = 50\%V_{\text{CES}}$ $R_{\text{G(ON)}} = R_{\text{G(OFF)}} = 25\Omega$	-	210	-	ns
$t_{\text{r}}$	Rise time		-	40	-	ns
$E_{\text{ON}}$	Turn-on energy loss - per cycle		-	0.48	-	mJ
$t_{\text{d(OFF)}}$	Turn-off delay time		-	320	-	ns
$t_{\text{f}}$	Fall time		-	520	-	ns
$E_{\text{OFF}}$	Turn-off energy loss - per cycle		-	2.3	-	mJ

## SHORT CIRCUIT RATING

Symbol	Parameter	Conditions	Min.	Typ.	Max.	Units
$t_{\text{sc}}$	Short circuit withstand time	$T_{\text{c}} = 125^{\circ}\text{C}, V_{\text{GE}} = 15\text{V}, V_{\text{CE}} = 50\% V_{\text{CES}}$	-	-	10	$\mu\text{s}$

DIODE CHARACTERISTICS

T<sub>c</sub> = 25°C unless stated otherwise.

Symbol	Parameter	Conditions	Min.	Typ.	Max.	Units
V <sub>FM</sub>	Forward voltage	At I <sub>F</sub> = 23A peak	-	1.4	-	V
		At I <sub>F</sub> = 23A peak, T <sub>case</sub> = 125°C	-	1.34	-	V
t <sub>rr</sub>	Reverse recovery time	I <sub>F</sub> = 23A, di <sub>RR</sub> /dt = 200A/μs	-	70	-	ns
I <sub>RRM</sub>	Reverse recovery current	V <sub>R</sub> = 50%V <sub>RRM</sub>	-	12	-	A

BASIC TEST CIRCUIT AND SWITCHING DEFINITIONS

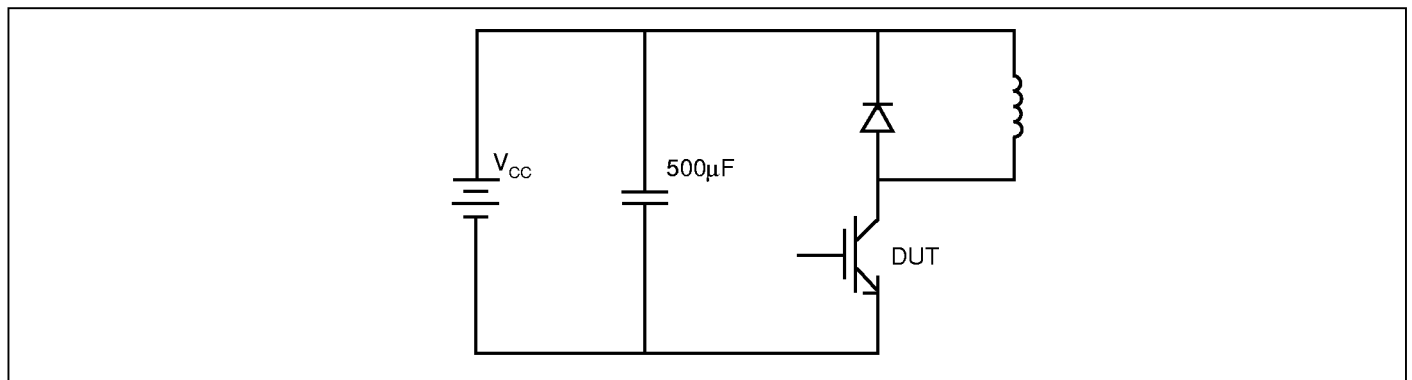


Fig.3 Basic d.c. chopper circuit

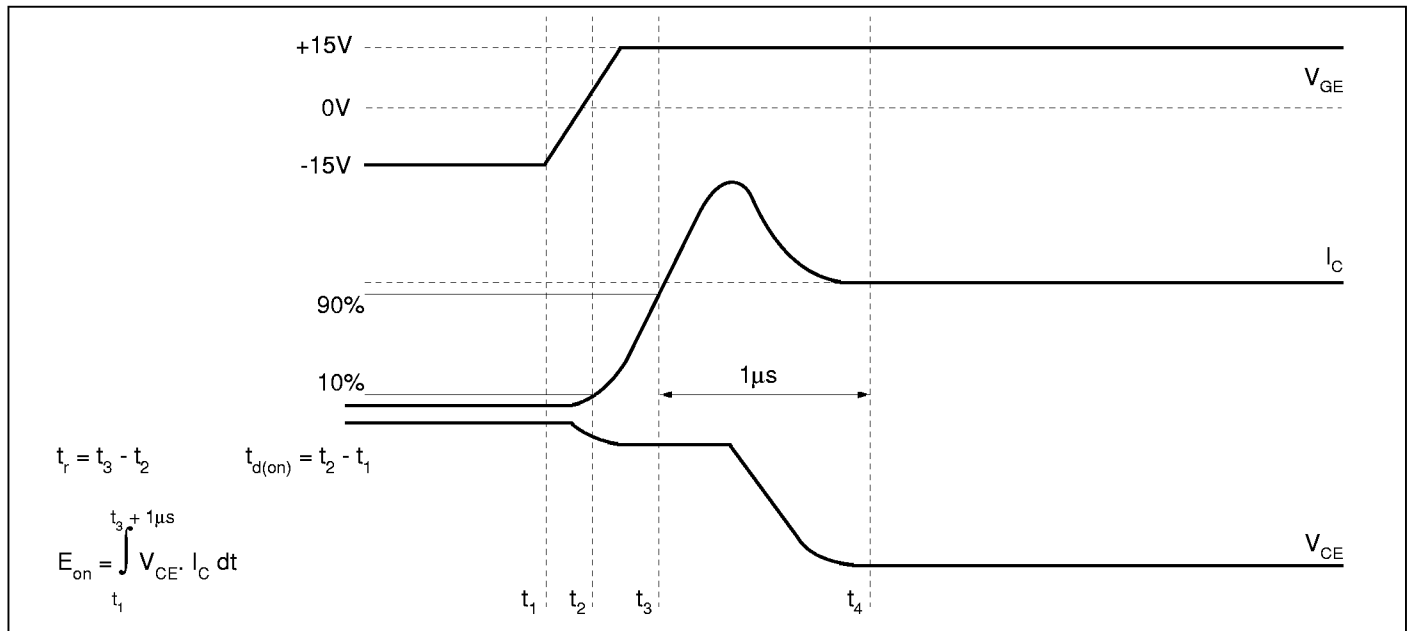


Fig.4 Turn-on characteristics

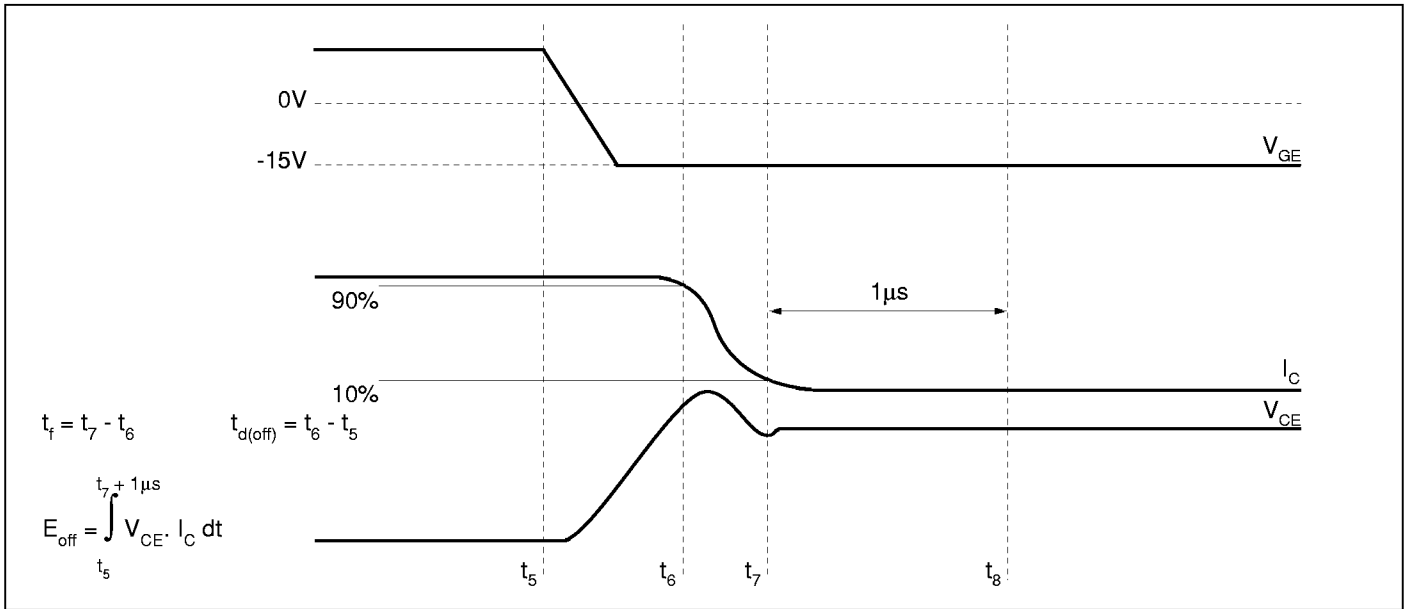


Fig.5 Turn-off characteristics

**CURVES**

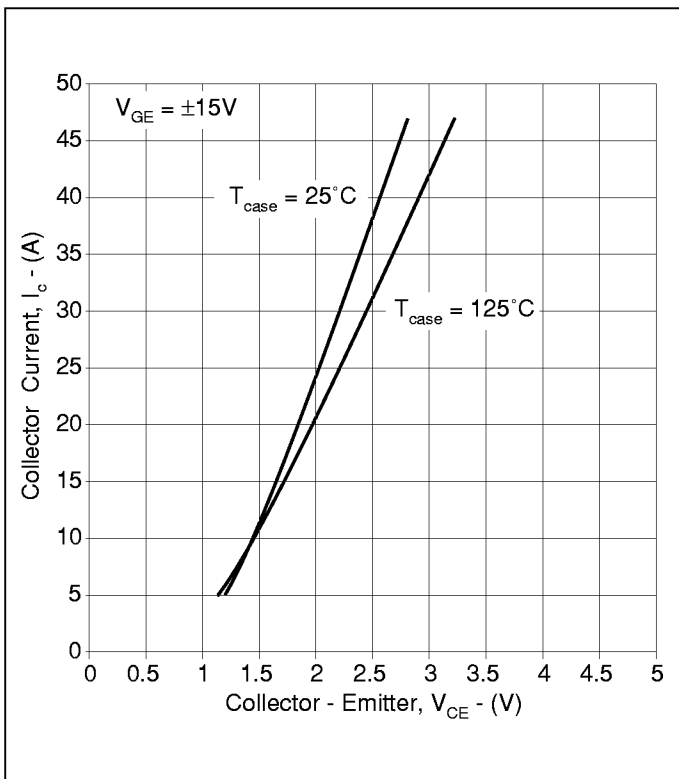


Fig.6 Typical output characteristics

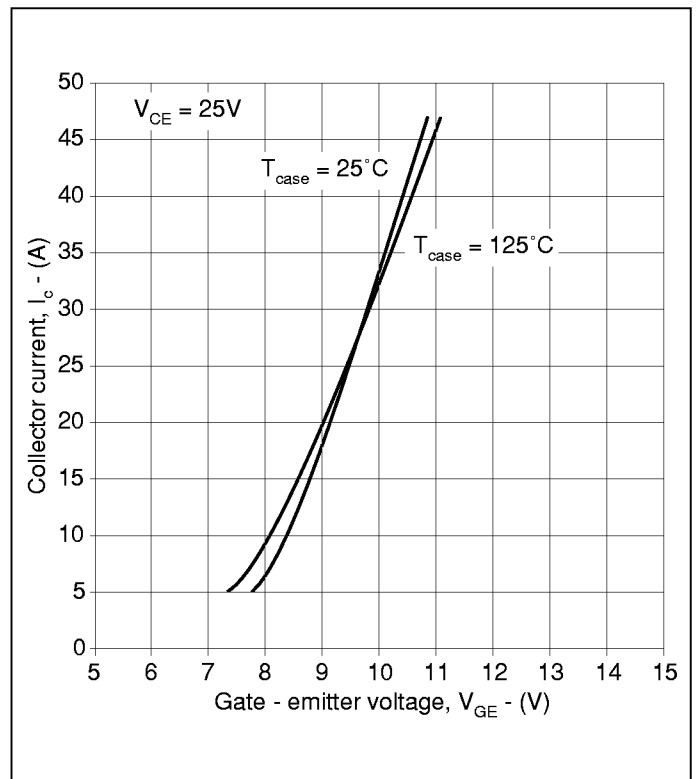


Fig.7 Typical transfer characteristics

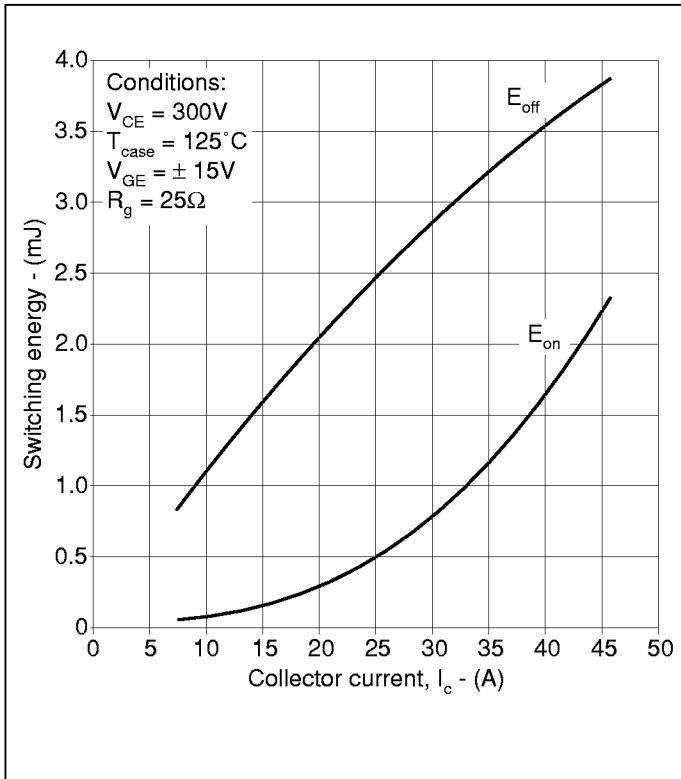


Fig.8 Typical switching losses vs collector current

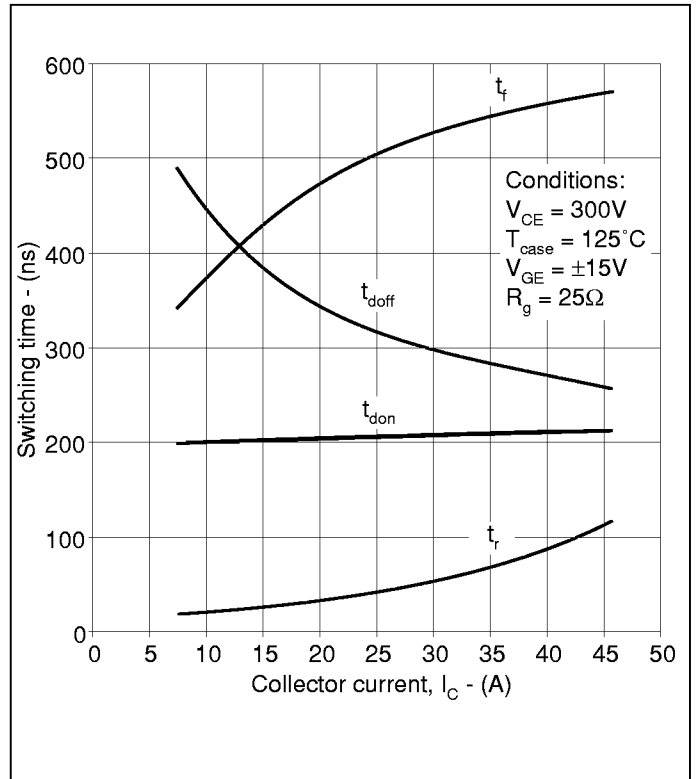


Fig.9 Typical switching times vs collector current

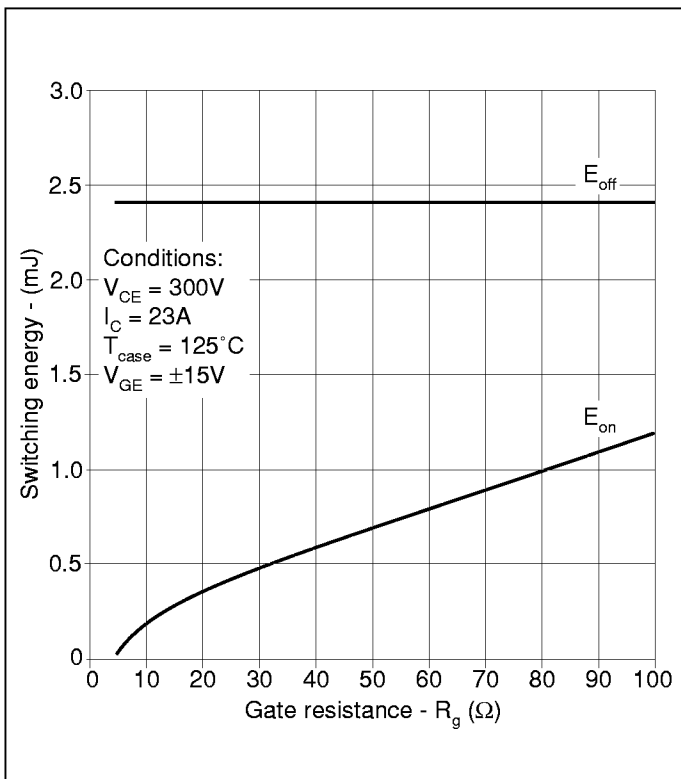


Fig.10 Typical switching losses vs gate resistance

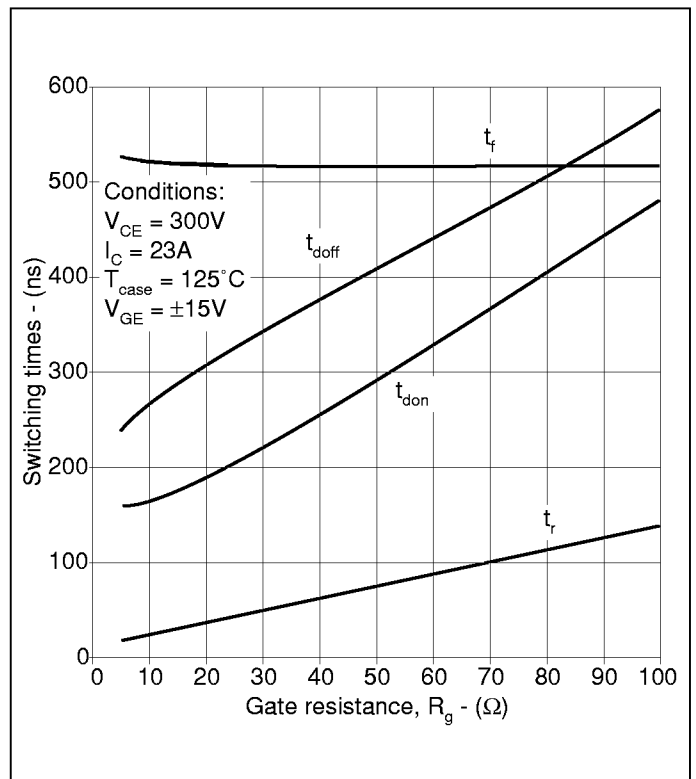


Fig.11 Typical switching time vs gate resistance

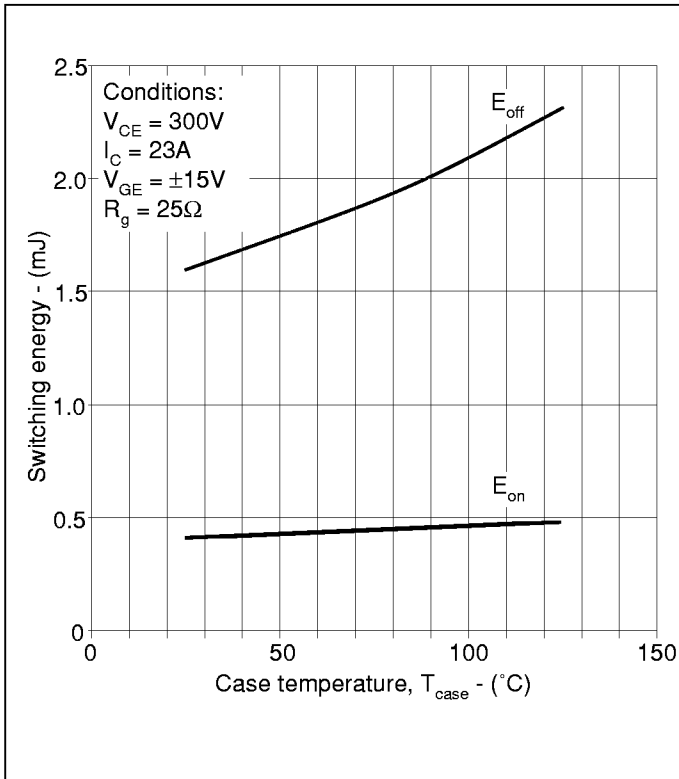


Fig.12 Typical switching losses vs case temperature

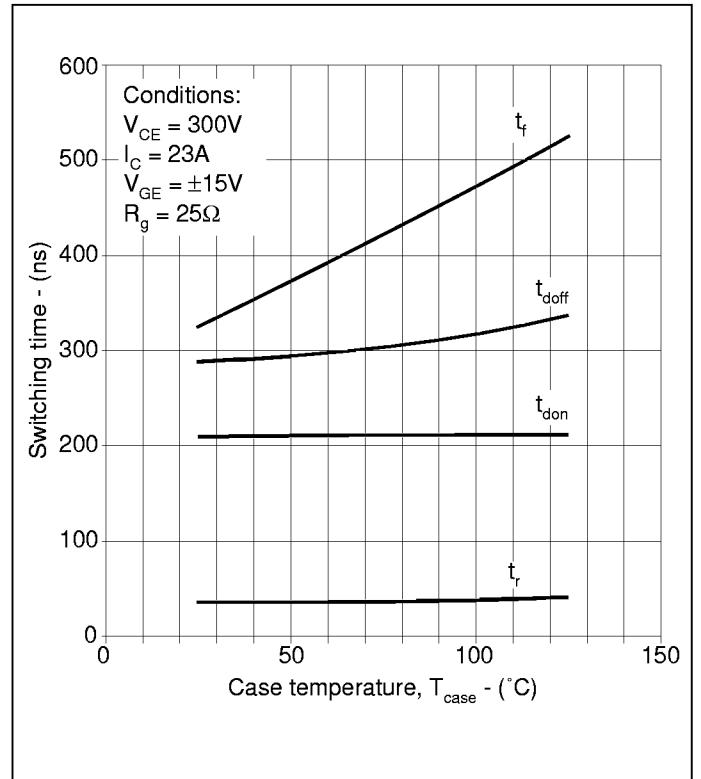


Fig.13 Typical switching time vs case temperature

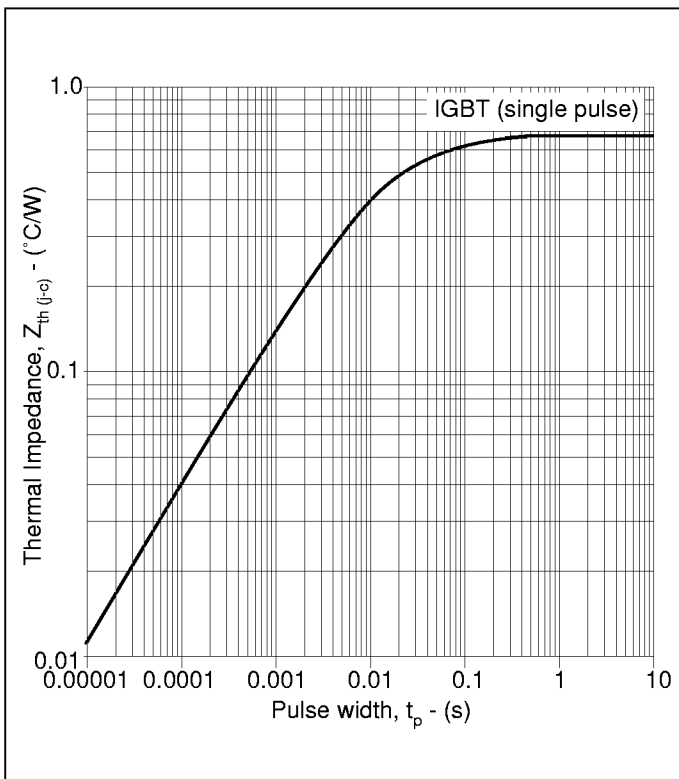


Fig.14 Transient thermal impedance - junction to case

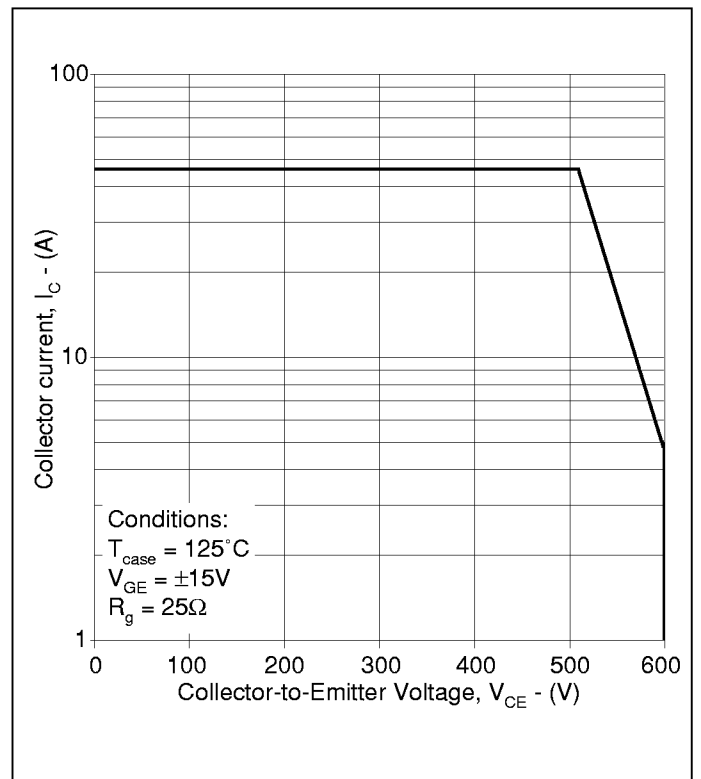


Fig.15 Reverse bias safe operating area

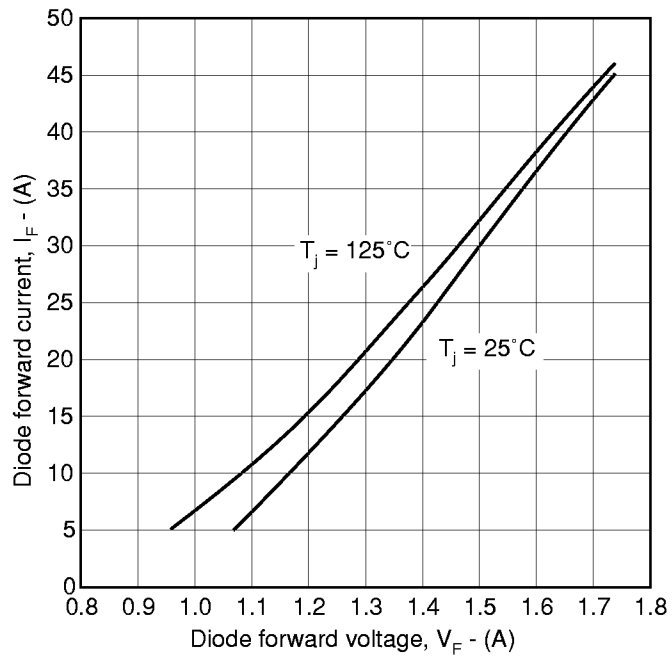
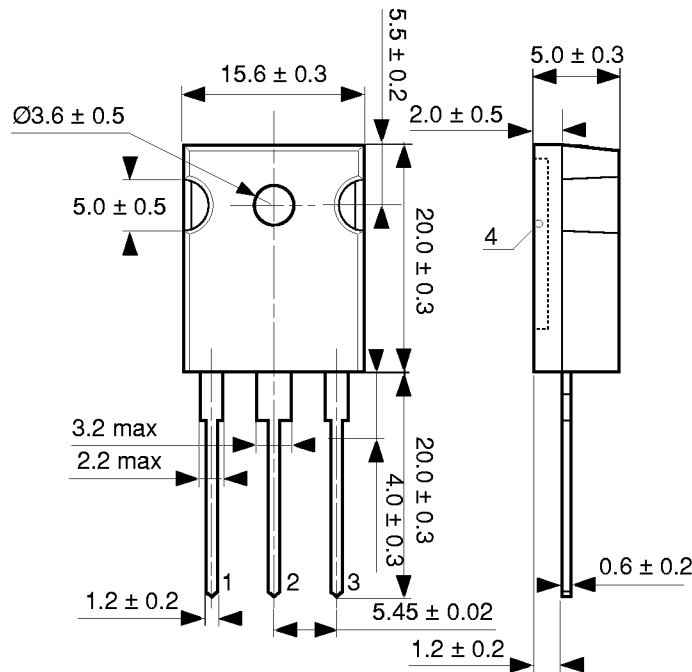


Fig.16 Diode typical forward characteristics

**PACKAGE OUTLINE - TO247**

For further package information, please contact your local Customer Service Centre. All dimensions in mm, unless stated otherwise. DO NOT SCALE.



Terminal 1 - Gate  
Terminal 2 - Collector  
Terminal 3 - Emitter  
Terminal 4 - Collector



HEADQUARTERS OPERATIONS  
**MITEL SEMICONDUCTOR**  
Cheney Manor, Swindon,  
Wiltshire SN2 2QW, United Kingdom.  
Tel: (01793) 518000  
Fax: (01793) 518411

**MITEL SEMICONDUCTOR**  
1500 Green Hills Road,  
Scotts Valley, California 95066-4922  
United States of America.  
Tel (408) 438 2900  
Fax: (408) 438 5576/6231

Internet: <http://www.gpsemi.com>

POWER PRODUCT CUSTOMER SERVICE CENTRES

- **FRANCE, BENELUX & SPAIN.** Les Ulis Cedex. Tel: (1) 69 18 90 00. Fax: (1) 64 46 54 50.
- **GERMANY.** München. Tel: 089 41 95 080. Fax: 089 41 95 08 55.
- **NORTH AMERICA.** Dedham. Tel: (781) 251 0126. Fax: (781) 251 0106.
- **UNITED KINGDOM.** Lincoln. Tel: 01522 500500. Fax: 01522 510550.

These are supported by Agents and Distributors in major countries world-wide.

© Mitel Corporation 1998 Publication No. DS4739 Issue No. 2.2 February 1998

TECHNICAL DOCUMENTATION – NOT FOR RESALE. PRINTED IN UNITED KINGDOM

This publication is issued to provide information only which (unless agreed by the Company in writing) may not be used, applied or reproduced for any purpose nor form part of any order or contract nor to be regarded as a representation relating to the products or services concerned. No warranty or guarantee express or implied is made regarding the capability, performance or suitability of any product or service. The Company reserves the right to alter without prior notice the specification, design or price of any product or service. Information concerning possible methods of use is provided as a guide only and does not constitute any guarantee that such methods of use will be satisfactory in a specific piece of equipment. It is the user's responsibility to fully determine the performance and suitability of any equipment using such information and to ensure that any publication or data used is up to date and has not been superseded. These products are not suitable for use in any medical products whose failure to perform may result in significant injury or death to the user. All products and materials are sold and services provided subject to the Company's conditions of sale, which are available on request.

All brand names and product names used in this publication are trademarks, registered trademarks or trade names of their respective owners.