

**FUTURE PRODUCT
TO BE ANNOUNCED**

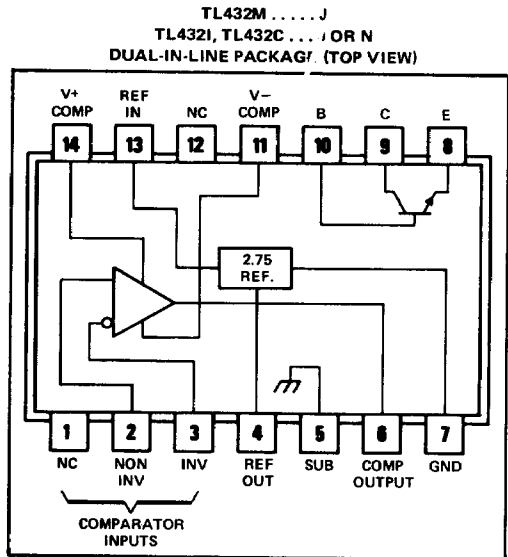
**TYPES TL432M, TL432I, TL432C
TIMER/REGULATOR/COMPATOR
BUILDING BLOCKS**

SEPTEMBER 1977

- Temperature-Compensated 2.75-V Reference
- Uncommitted Output Transistor
- 100-mA Drive Capability
- High Comparator Input Impedance
- Wide Operating Voltage Range

description

The TL432 is a versatile group of building blocks developed for a broad range of comparator functions. It contains a high-gain comparator, a temperature-compensated 2.75-volt reference, and a booster transistor capable of sinking or sourcing 100 milliamperes. The uncommitted inputs and outputs of the comparator and booster transistor provide design flexibility to include series regulators, shunt regulators, detectors, timers, and current regulators. This monolithic integrated circuit can be used over a wide range of operating voltage.



The TL432M will be characterized for operation over the full military temperature range of -55°C to 125°C . The TL432I will be characterized for operation from -40°C to 85°C , and the TL432C from 0°C to 70°C .

typical applications

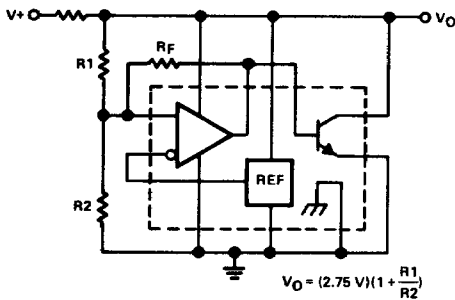


FIGURE 1—SHUNT REGULATOR

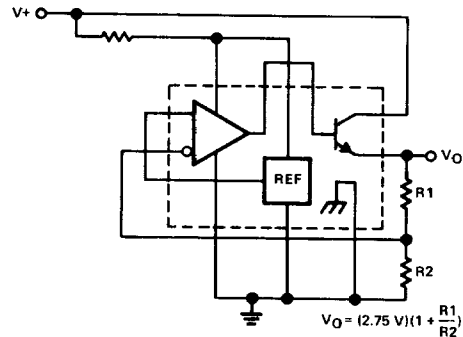


FIGURE 2—SERIES REGULATOR

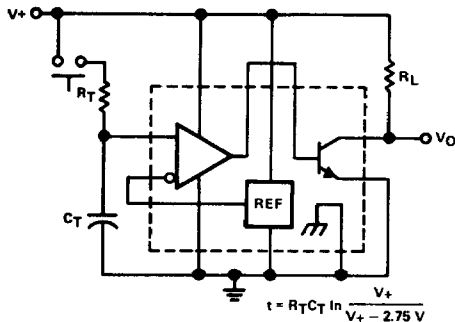


FIGURE 3—BASIC TIMER

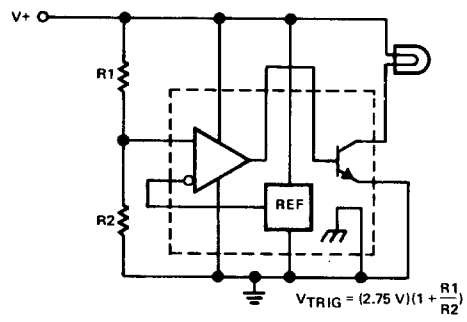


FIGURE 4—OVER-VOLTAGE DETECTOR