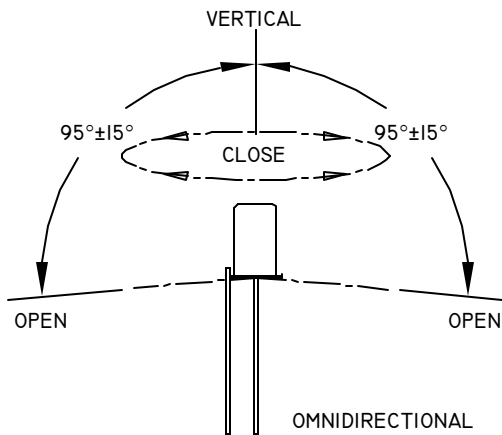
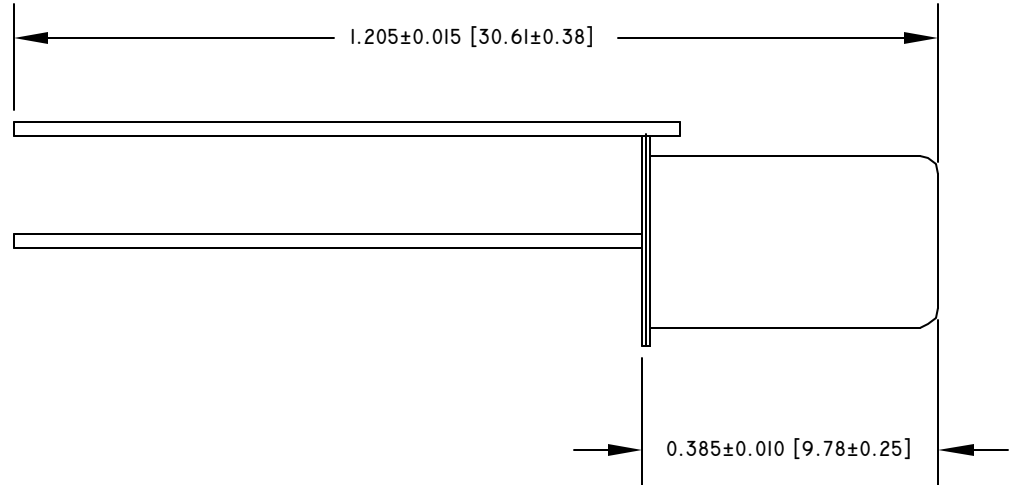
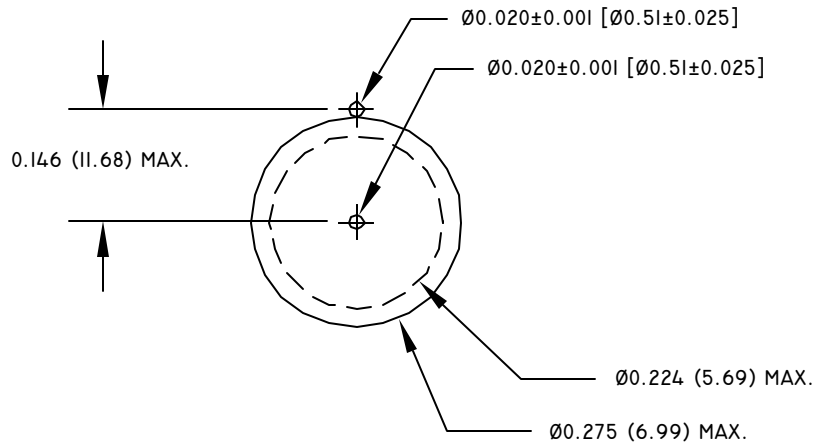


DRAWING #: CMI295-1

REV.	DATE	REVISION DESCRIPTION	DR.
A	03/01/01	ORIGINAL	P.C.
B	4/16/03	Ø0.275 (6.99) MAX. WAS Ø0.260 ±0.005	L.L.

- NOTE:
1. ELECTRICAL:
 - 1.1 CONTACT CAPACITY 0.5 A AT 150 VAC.
 - 1.2 CONTACT RESISTANCE 0.1 OHMS MAX..
 2. OPERATE:
 - 2.1 BREAK ANGLE 95° ±15° FROM VERTICAL.
 - 2.2 OPERATING TEMPERATURE -37° C TO 100° C.
 3. EXTERNAL FINISH:
 - 3.1 TIN PLATE.



COMUS INTERNATIONAL
 454 ALLWOOD ROAD, CLIFTON, NEW JERSEY 07012 TEL. (973) 777-6900

ENGINEERING		
QUALITY		
PRODUCTION		
APPROVAL	SIGNATURE	DATE

UNSPECIFIED TOLERANCES
 DECIMAL: .XX ±.01 [.254]
 .XXX ±.005 [.127]
 FRACTIONAL: ± 1/64 [.397]
 ANGULAR: ± 1/2°

REF.:	SCALE: NONE	DRAWN BY: L.L.	DATE 04/16/2003
TITLE: TILT SWITCH			
DATE:		DRAWING #: CMI295-1	