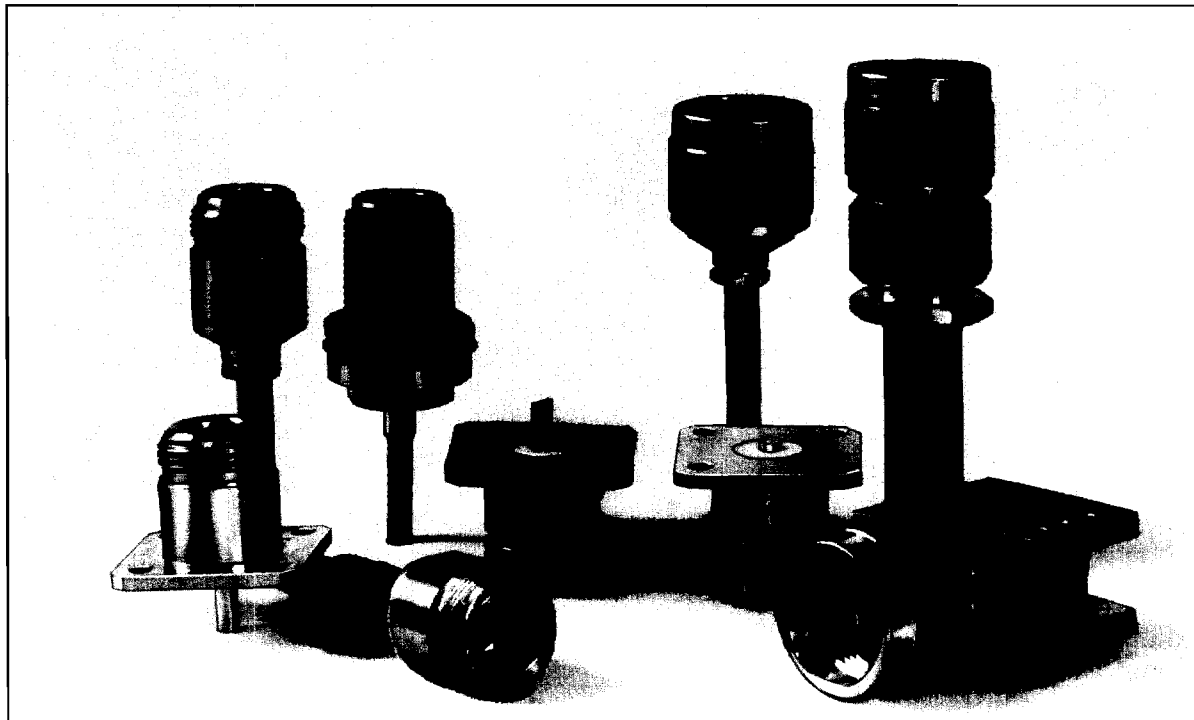


# Type N Coaxial Connectors



The Type N Coaxial Connector continues to maintain its popularity for microwave application.

## Design and Construction

The outer shell and coupling mechanism are available in stainless steel, nickel plated brass, gold plated beryllium copper, and aluminum. The choice of material is determined by durability, cost and weight. Center contacts are made of gold plated beryllium copper. The dielectric is PTFE fluorocarbon.

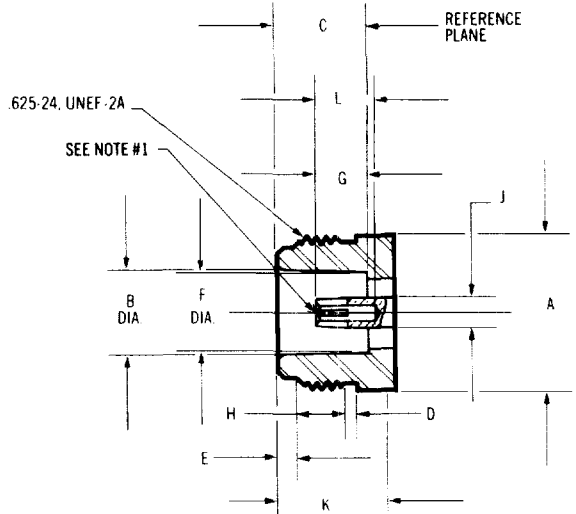
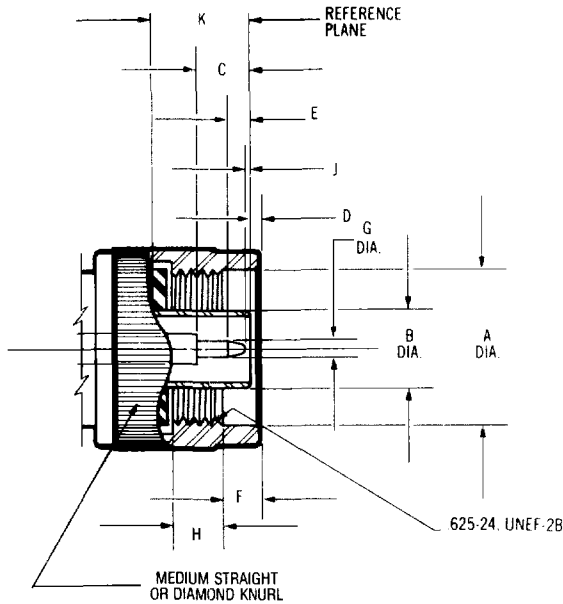
## Upper Operating Frequency

The upper operating frequency for this series varies with the designated coaxial cable and internal design. This ranges from 11.0 GHz for larger size coaxial cable, such as RG-214/U, to greater than 18.0 GHz for .141 semi-rigid cable. A complete extended frequency 18.0 GHz version is also available in this catalog. For other types, consult the factory technical staff.

## Table of Contents

Type N Interface Mating Dimensions	177
Specifications	178
Semi-Rigid Cable Type	179
.085 and .141 Diameter-Direct Solder Attachment	
.085 and .141 Diameter-Solder Clamp Attachment	
.250 and .325 Diameter-Clamp Attachment	
.085 and .141 Diameter-Solderless Compression Crimp Attachment	
.375 and .500 Diameter-Clamp Attachment	
Flexible Cable Type	184
Clamp Attachment	
Crimp Attachment	
Panel Mount Receptacles	187
Solder Terminal	
Solder Pot Terminal	
Straight Terminal	
Tab Terminal	
Strip Transmission Line	188
End Launch	
Surface Launch	
In-Series Adapters	189
18.0 GHz High Performance	190
Semi-Rigid - Direct Solder Attachment	
Panel Mount Receptacles	
Straight Terminal	
Slot Terminal	
In-Series Adapters	

# Type N Interface Mating Dimensions



## PLUG

Letter	Inches (Millimeters) <sup>3</sup>	
	Minimum	Maximum
A	.630 (16.0)	-
B	.3130 (7.95)	.3158 (8.03)
C	.210 (5.33)	.230 (5.84)
D	.016 (0.41)	.060 (1.52)
E	.130 (3.30)	.170 (4.32)
F	.158 (4.01)	.168 (4.27)
G	.063 (1.60)	.066 (1.68)
H	.177 (4.49)	-
J	.003 (0.08)	-
K	.398 (10.11)	.412 (10.46)

## JACK

Letter	Inches (Millimeters) <sup>3</sup>	
	Minimum	Maximum
A	-	.627 (15.93)
B	.336 (8.53)	.344 (8.74)
C	.356 (9.04)	.362 (9.19)
D	.047 (1.19)	.077 (1.96)
E	.047 (1.19)	.077 (1.96)
F	.316 (8.03)	.320 (8.13)
G	.187 (4.75)	.207 (5.26)
H	.172 (4.37)	.202 (5.13)
J	.119 (3.02)	.124 (3.15)
K	.422 (10.72)	-
L	.210 (5.33)	-

+ .001 +.03  
- .002 -.05

1. ID to meet VSWR and contact resistance when mated with .065 (1.65 mm) dia. pin.
2. When fully engaged, the two reference planes must coincide with metal to metal contact.
3. Metric equivalents (to the nearest 0.01mm) are given for general information only.

M/A-COM, Inc.

177

North America: Tel. (800) 366-2266  
Fax (800) 618-8883

Asia/Pacific: Tel. +85 2 2111 8088  
Fax +85 2 2111 8087

Europe: Tel. +44 (1344) 869 595  
Fax +44 (1344) 300 020

# Type N Specifications

Requirement	MIL-C-39012 Applicable Paragraph	Detail
-------------	-------------------------------------	--------

## General

Material	3.3	Brass, half hard per QQ-B-626. Steel, corrosion resistant per ASTM-A-484 and ASTM-A-582, Type 303. Beryllium copper per ASTM-B-196. PTFE Fluorocarbon per ASTM-D-1457.
Finish	3.3.1	Center contacts shall be gold plated to a min. thickness of .0001 inch in accordance with MIL-G-45204, Type I, Grade C. All other metal parts shall be finished as to provide a connector which meets the corrosion requirements.
Design	3.4	The design shall be such that the outline and interface dimensions shown in this catalog are met.

## Electrical

Insulation Resistance	3.11	The insulation resistance shall not be less than 5,000 megohms.
Corona Level	3.22	Refer to applicable military slash sheet or consult factory.
Dielectric Withstanding Voltage	3.17	Refer to applicable military slash sheet or consult factory.
RF High Potential	3.23	Refer to applicable military slash sheet or consult factory.
Contact Resistance	3.16	Refer to applicable military slash sheet or consult factory.
VSWR	3.14	Refer to applicable military slash sheet or consult factory. Frequency range dependent on cable used.
RF Leakage	3.26	Refer to applicable military slash sheet or consult factory.
Insertion Loss	3.27	Refer to applicable military slash sheet or consult factory. Frequency range dependent on cable used.

## Mechanical

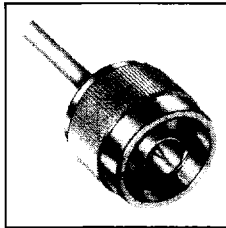
Force to Engage	3.5.1	The torque required to engage and disengage shall not exceed 6 in.-lbs. The longitudinal force is not applicable.
Coupling Nut Retention	3.25	100 lbs. min. Applicable for plug connectors only.
Coupling Proof Torque	3.6	30 in.-lbs. min. Applicable for plug connectors only.
Cable Retention	3.24	Refer to applicable military slash sheet or consult factory.
Mating Characteristics	3.7	Applicable to jack connectors only. Oversize test pin .067 min. dia., .125 deep; insertion force 2 lbs. max. with .0658 min. dia. pin; withdrawal force 2 oz. min. with .0645 max. dia. pin.
Connector Durability	3.15	The connector to be tested and its mating connector shall be subjected to 500 insertion and withdrawal cycles at 12 cycles per minute max. The connector shall show no evidence of mechanical failure and shall meet the mating characteristic requirements.
Recommended Mating Torque	—	12 to 15 in.-lbs.

## Environmental

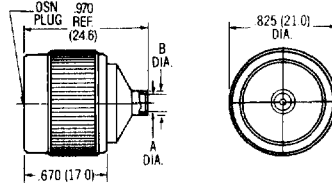
Vibration	3.18	Specification MIL-STD-202, method 204, test condition B.
Shock	3.19	Specification MIL-STD-202, method 213, test condition I.
Thermal Shock	3.20	Refer to applicable military slash sheet or consult factory.
Corrosion (Salt Spray)	3.13	Specification MIL-STD-202, method 101, test condition B.
Moisture Resistance	3.21	Specification MIL-STD-202, method 106. No measurements at high humidity. Insulation resistance shall be at least 200 megohms within 5 minutes of removal from humidity.

# Type N For Semi-Rigid Cable

.085 and .141 Dia. • Direct Solder Attachment

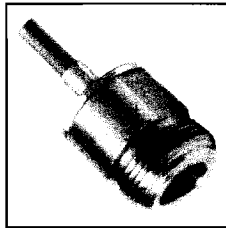


**Straight Cable Plug**  
DC-18.0 GHz

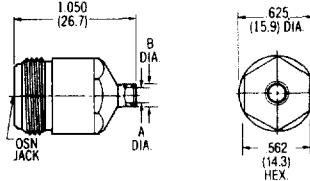


Cable	RG 402/U (.141)	RG 405/U (.085)
Cable Dielectric	Solid PTFE	Solid PTFE
Part Number	<b>3001-7941-00</b>	<b>3001-7985-00</b>
Dim. A	Inches (mm) .144 Min. (3.7)	Inches (mm) .089 Min. (2.3)
Dim. B	.180 (4.6)	.120 (3.0)

Finish: Passivated stainless steel. Cable adapter section is gold plated for solder attachment.  
.141 Microporous PTFE cable dielectric available. Consult factory. Refer to Appendix for Coaxial Cable Characteristics. Refer to recommended assembly tools in Tool Section.

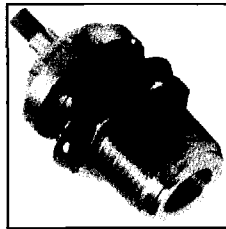


**Straight Cable Jack**

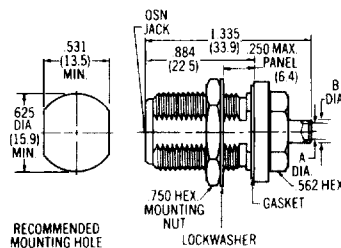


Cable	RG 402/U (.141)	RG 405/U (.085)
Cable Dielectric	Solid PTFE	Solid PTFE
Part Number	<b>3002-7941-00</b>	<b>3002-7985-00</b>
Dim. A	Inches (mm) .144 Min. (3.7)	Inches (mm) .089 Min. (2.3)
Dim. B	.180 (4.6)	.120 (3.0)

Finish: Passivated stainless steel. Cable adapter section is gold plated for solder attachment.  
.141 Microporous PTFE cable dielectric available. Consult factory. Refer to Appendix for Coaxial Cable Characteristics. Refer to recommended assembly tools in Tool Section.

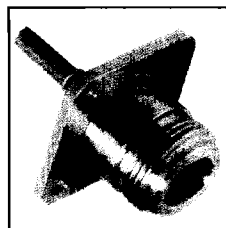


**Bulkhead Feedthrough Cable Jack**

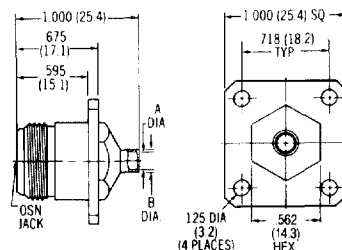


Cable	RG 402/U (.141)	RG 405/U (.085)
Cable Dielectric	Solid PTFE	Solid PTFE
Part Number	<b>3004-7941-00</b>	<b>3004-7985-00</b>
Dim. A	Inches (mm) .144 Min. (3.7)	Inches (mm) .089 Min. (2.3)
Dim. B	.180 (4.6)	.120 (3.0)

Finish: Passivated stainless steel. Cable adapter section is gold plated for solder attachment.  
.141 Microporous PTFE cable dielectric available. Consult factory. Refer to Appendix for Coaxial Cable Characteristics. Refer to recommended assembly tools in Tool Section.



**Flange Mount Cable Jack**



Cable	RG 402/U (.141)	RG 405/U (.085)
Cable Dielectric	Solid PTFE	Solid PTFE
Part Number	<b>3006-7941-00</b>	<b>3006-7985-00</b>
Dim. A	Inches (mm) .144 Min. (3.7)	Inches (mm) .089 Min. (2.3)
Dim. B	.180 (4.6)	.120 (3.0)

Finish: Passivated stainless steel. Cable adapter section is gold plated for solder attachment.  
.141 Microporous PTFE cable dielectric available. Consult factory. Refer to Appendix for Coaxial Cable Characteristics. Refer to recommended assembly tools in Tool Section.

M/A-COM, Inc.

179

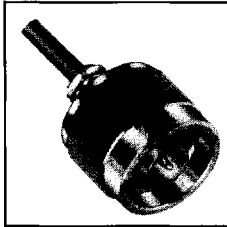
North America: Tel. (800) 366-2266  
Fax (800) 618-8883

Asia/Pacific: Tel. +85 2 2111 8088  
Fax +85 2 2111 8087

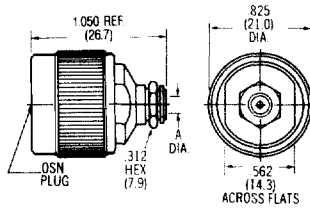
Europe: Tel. +44 (1344) 869 595  
Fax +44 (1344) 300 020

# Type N For Semi-Rigid Cable

.085 and .141 Dia. • Solder Clamp Attachment

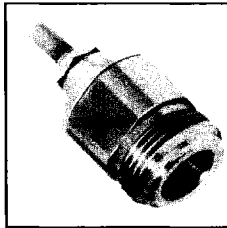


**Straight Cable Plug**

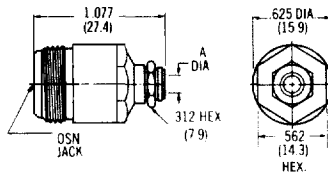


Cable	RG 402/U (.141)	RG 405/U (.085)
Cable Dielectric	Solid PTFE	Solid PTFE
Part Number	<b>3001-7841-00</b>	<b>3001-7885-00</b>
Dim. A	Inches (mm) .144 Min. (3.7)	Inches (mm) .089 Min. (2.3)

Finish: Passivated stainless steel. Cable adapter section is gold plated for solder attachment.  
.141 Microporous PTFE cable dielectric available. Consult factory. Refer to Appendix for Coaxial Cable Characteristics.  
Refer to recommended assembly tools in Tool Section.

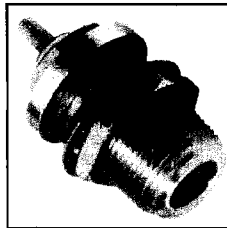


**Straight Cable Jack**

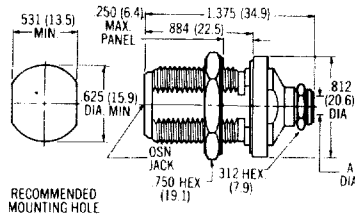


Cable	RG 402/U (.141)	RG 405/U (.085)
Cable Dielectric	Solid PTFE	Solid PTFE
Part Number	<b>3002-7841-00</b>	<b>3002-7885-00</b>
Dim. A	Inches (mm) .144 Min. (3.7)	Inches (mm) .089 Min. (2.3)

Finish: Passivated stainless steel. Cable adapter section is gold plated for solder attachment.  
.141 Microporous PTFE cable dielectric available. Consult factory. Refer to Appendix for Coaxial Cable Characteristics.  
Refer to recommended assembly tools in Tool Section.



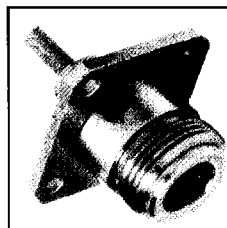
**Bulkhead Feedthrough Cable Jack**



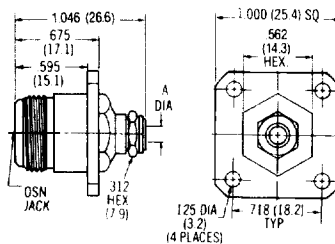
RECOMMENDED MOUNTING HOLE

Cable	RG 402/U (.141)	RG 405/U (.085)
Cable Dielectric	Solid PTFE	Solid PTFE
Part Number	<b>3004-7841-00</b>	<b>3004-7885-00</b>
Dim. A	Inches (mm) .144 Min. (3.7)	Inches (mm) .089 Min. (2.3)

Finish: Passivated stainless steel. Cable adapter section is gold plated for solder attachment.  
.141 Microporous PTFE cable dielectric available. Consult factory. Refer to Appendix for Coaxial Cable Characteristics.  
Refer to recommended assembly tools in Tool Section.



**Flange Mount Cable Jack**



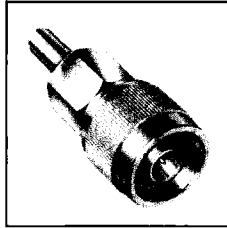
125 DIA (3.2) (4 PLACES) TYP

Cable	RG 402/U (.141)	RG 405/U (.085)
Cable Dielectric	Solid PTFE	Solid PTFE
Part Number	<b>3006-7841-00</b>	<b>3006-7885-00</b>
Dim. A	Inches (mm) .144 Min. (3.7)	Inches (mm) .089 Min. (2.3)

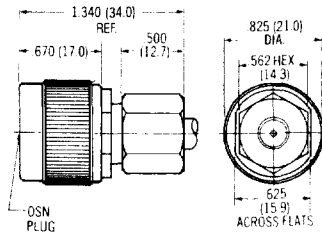
Finish: Passivated stainless steel. Cable adapter section is gold plated for solder attachment.  
.141 Microporous PTFE cable dielectric available. Consult factory. Refer to Appendix for Coaxial Cable Characteristics.  
Refer to recommended assembly tools in Tool Section.

# Type N For Semi-Rigid Cable

## .250 and .325 Dia. • Clamp Attachment

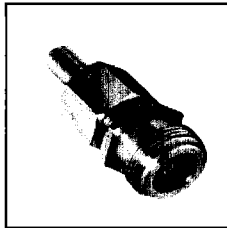


**Straight Cable Plug**

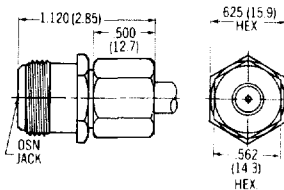


Cable	RG 401/U (.250)	.250	.325
Cable Dielectric	Solid PTFE	Microporous PTFE & Foam	Solid PTFE
Compression Clamp Attachment			
Part Number	3001-7750-02	3001-7752-02	3001-7725-02

Finish: Passivated stainless steel  
 Press clamp attachment available. Consult factory.  
 Refer to Appendix for Coaxial Cable Characteristics.  
 Refer to recommended assembly tools in Tool Section.

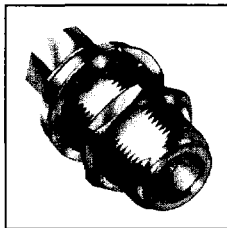


**Straight Cable Jack**

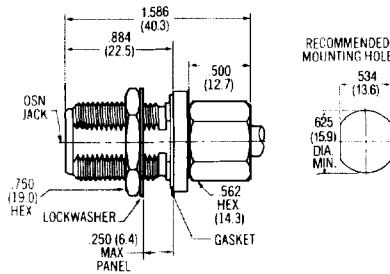


Cable	RG 401/U (.250)	.250	.325
Cable Dielectric	Solid PTFE	Microporous PTFE & Foam	Solid PTFE
Compression Clamp Attachment			
Part Number	3002-7750-02	3002-7752-02	3002-7725-02

Finish: Passivated stainless steel  
 Press clamp attachment available. Consult factory.  
 Refer to Appendix for Coaxial Cable Characteristics.  
 Refer to recommended assembly tools in Tool Section.



**Bulkhead Feedthrough Cable Jack**



Cable	RG 401/U (.250)	.250	.325
Cable Dielectric	Solid PTFE	Microporous PTFE & Foam	Solid PTFE
Compression Clamp Attachment			
Part Number	3004-7750-02	3004-7752-02	3004-7725-02

Finish: Passivated stainless steel  
 Press clamp attachment available. Consult factory.  
 Refer to Appendix for Coaxial Cable Characteristics.  
 Refer to recommended assembly tools in Tool Section.

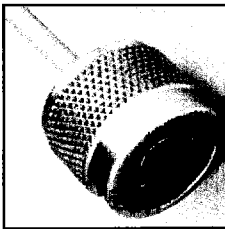
# Type N

## Solderless Compression Crimp

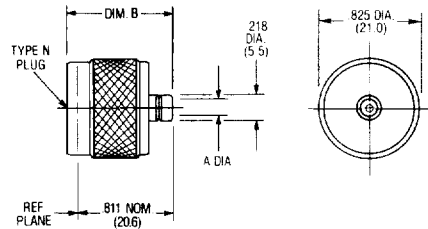
Type N 50 ohm Solderless Compression Crimp Connectors are available for use on RG 402/U (.141 dia.) and RG 405/U (.085 dia.) semi-rigid cables. These completely assembled units feature captured center contacts, durable stainless steel housings and coupling

nuts, and M/A-COM's Solderless Compression Crimp Cable Attachment. The center contact is beryllium copper, gold plated and is supported by a PTFE fluoro carbon dielectric.

### .085 and .141 Dia. • Solderless Cable Attachment

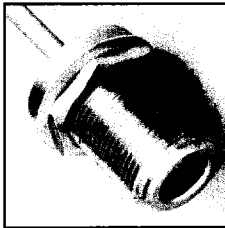


**Straight Cable Plug**

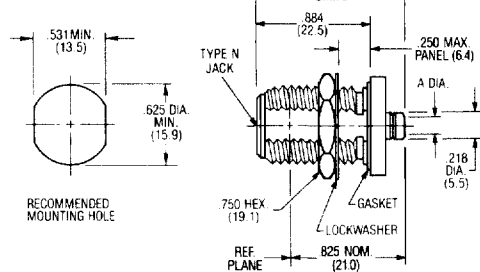


Cable	RG 402/U (.141)	RG 405/U (.085)
Part Number	<b>3001-7641-02</b>	<b>3001-7685-02</b>
Dim. A	Inches (mm) .143 (3.6)	Inches (mm) .088 Min. (2.2)
Dim. B	Before Crimping	.962 Ref. (24.4)
	After Crimping	.885 Max. (22.5)

Finish: Passivated stainless steel. For gold plate, change the Part Number suffix from -02 to -00. Coupling nut is passivated in all cases. All outline drawings show after crimping configurations. Refer to Appendix for Coaxial Cable Characteristics.



**Bulkhead Feedthrough Cable Jack**



Cable	RG 402/U (.141)	RG 405/U (.085)
Part Number	<b>3004-7641-02</b>	<b>3004-7685-02</b>
Dim. A	Inches (mm) .143 (3.6)	Inches (mm) .088 Min. (2.2)
Dim. B	Before Crimping	1.304 Ref. (33.1)
	After Crimping	1.190 Max. (30.2)

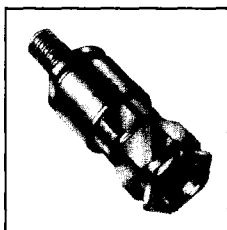
Finish: Passivated stainless steel. For gold plate, change the Part Number suffix from -02 to -00. All outline drawings show after crimping configurations. Refer to Appendix for Coaxial Cable Characteristics.

# Type N For High Power • Low Loss Cable

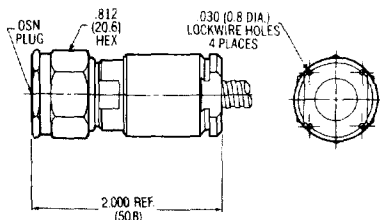
The following OSN connectors have been designed for use with high power low loss semi-rigid coaxial cables of .375 and .500-inch diameters. Each connector body and/or coupling nut is made of aluminum for light weight.

The bodies have an iridited finish while the coupling and clamp nuts are anodized. The solder-on center contact is beryllium copper, gold plated and supported by a PTFE fluorocarbon dielectric.

## .375 and .500 Dia. • Semi-Rigid Cable • Clamp Attachment

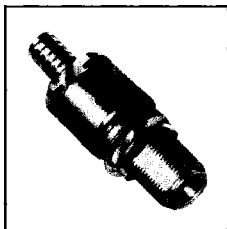


**Straight Cable Plug**

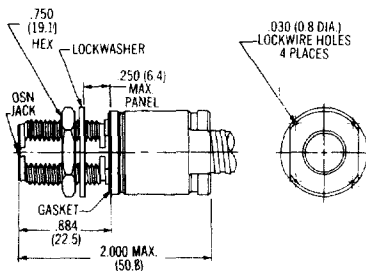


Cable	.375	.500
Cable Dielectric	Microporous PTFE	Microporous PTFE
Compression Clamp Attachment		
Part Number	3001-7575-00	3001-7500-00

Finish: Aluminum. Housing is iridited. Coupling and clamp nuts are anodized.  
Press clamp attachment available.  
Refer to Appendix for Coaxial Cable Characteristics.



**Bulkhead Feedthrough Cable Jack**

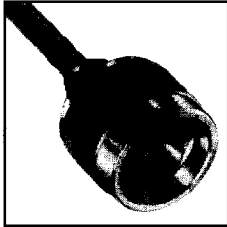


Cable	.375	.500
Cable Dielectric	Microporous PTFE	Microporous PTFE
Compression Clamp Attachment		
Part Number	3004-7575-00	3004-7500-00

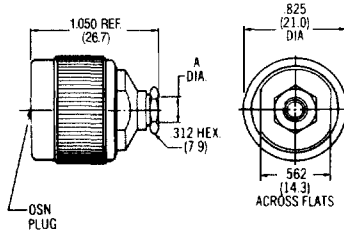
Finish: Aluminum. Housing is iridited. Coupling and clamp nuts are anodized.  
Press clamp attachment available.  
Refer to Appendix for Coaxial Cable Characteristics.

# Type N For Flexible Cable

## Flexible Cable • Clamp Attachment

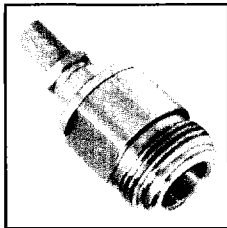


**Straight Cable Plug**

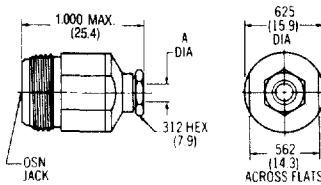


Cable	RG 55/U, 58, 141, 142, 223, 303	RG 174/U, 179, 187, 188, 316
Captured Center Contact		
Part Number	<b>3001-7341-10</b>	<b>3001-7388-10</b>
Dim. A	Inches (mm) .220 (5.6)	Inches (mm) .116 (2.9)

Finish: Nickel plated brass.  
Refer to Appendix for Coaxial Cable Characteristics.  
Refer to recommended assembly tools in Tool Section.

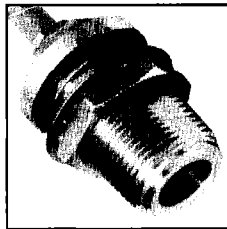


**Straight Cable Jack**

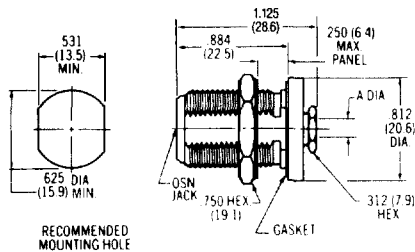


Cable	RG 55/U, 58, 141, 142, 223, 303	RG 174/U, 179, 187, 188, 316
Captured Center Contact		
Part Number	<b>3002-7341-10</b>	<b>3002-7388-10</b>
Dim. A	Inches (mm) .220 (5.6)	Inches (mm) .116 (2.9)

Finish: Nickel plated brass.  
Refer to Appendix for Coaxial Cable Characteristics.  
Refer to recommended assembly tools in Tool Section.



**Straight Bulkhead Cable Jack**

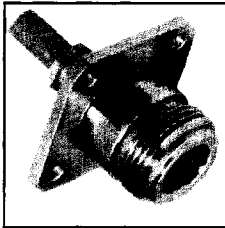


Cable	RG 55/U, 58, 141, 142, 223, 303	RG 174/U, 179, 187, 188, 316
Captured Center Contact		
Part Number	<b>3004-7341-10</b>	<b>3004-7388-10</b>
Dim. A	Inches (mm) .220 (5.6)	Inches (mm) .116 (2.9)

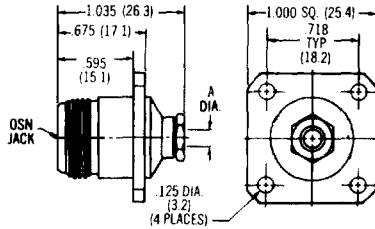
Finish: Nickel plated brass.  
Refer to Appendix for Coaxial Cable Characteristics.  
Refer to recommended assembly tools in Tool Section.

# Type N For Flexible Cable

## Flexible Cable • Clamp Attachment

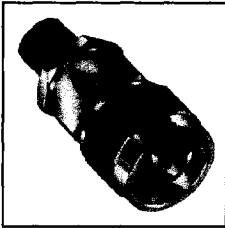


**Flange Mount Cable Jack**

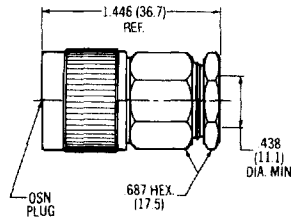


Cable	RG 55/U, 58, 141, 142, 223, 303	RG 174/U, 179, 187, 188, 316
Captured Center Contact		
Part Number	<b>3006-7341-10</b>	<b>3006-7388-10</b>
Dim. A	Inches (mm) .220 (5.6)	Inches (mm) .116 (2.9)

Finish: Nickel plated brass.  
Refer to Appendix for Coaxial Cable Characteristics.  
Refer to recommended assembly tools in Tool Section.



**Straight Cable Plug**

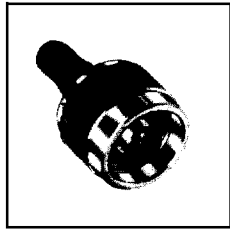


Cable	RG 214/U, 225
Part Number	<b>3001-7214-10</b>

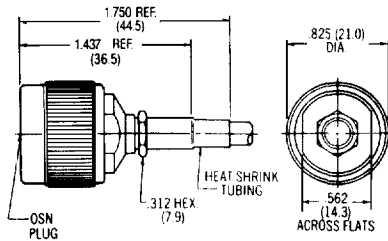
Finish: Nickel plated brass.  
Straight cable jack available.  
Refer to Appendix for Coaxial Cable Characteristics.  
Refer to recommended assembly tools in Tool Section.

# Type N For Flexible Cable

## Flexible Cable • Crimp Attachment

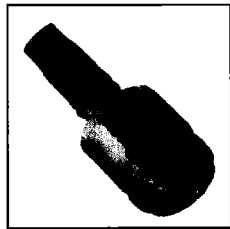


**Straight Cable Plug**

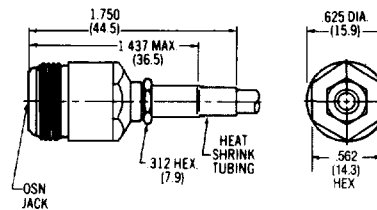


Cable	RG 58/U, 141, 303	RG 55/U, 142, 223, 400	RG 174/U, 179, 187, 188, 316
Captured Center Contact			
Part Number	3031-7358-10	3031-7341-10	3031-7388-10

Finish: Nickel plated brass.  
Refer to Appendix for Coaxial Cable Characteristics.  
Refer to recommended assembly tools in Tool Section.

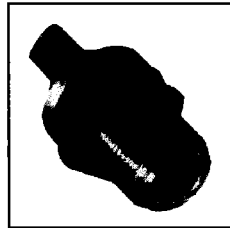


**Straight Cable Jack**

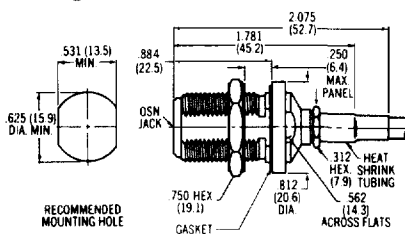


Cable	RG 58/U, 141, 303	RG 55/U, 142, 223, 400	RG 174/U, 179, 187, 188, 316
Captured Center Contact			
Part Number	3032-7358-10	3032-7341-10	3032-7388-10

Finish: Nickel plated brass.  
Refer to Appendix for Coaxial Cable Characteristics.  
Refer to recommended assembly tools in Tool Section.

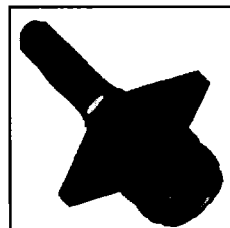


**Straight Bulkhead Cable Jack**

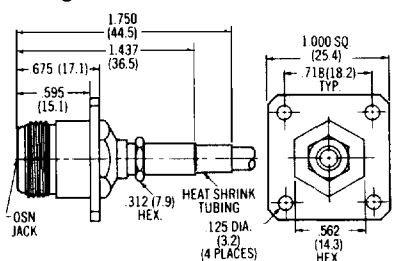


Cable	RG 58/U, 141, 303	RG 55/U, 142, 223, 400	RG 174/U, 179, 187, 188, 316
Captured Center Contact			
Part Number	3034-7358-10	3034-7341-10	3034-7388-10

Finish: Nickel plated brass.  
Refer to Appendix for Coaxial Cable Characteristics.  
Refer to recommended assembly tools in Tool Section.



**Straight Panel Cable Jack**

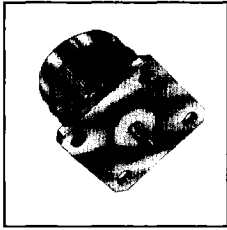


Cable	RG 58/U, 141, 303	RG 55/U, 142, 223, 400	RG 174/U, 179, 187, 188, 316
Captured Center Contact			
Part Number	3036-7358-10	3036-7341-10	3036-7388-10

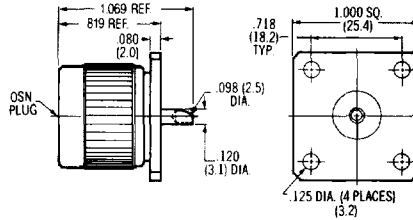
Finish: Nickel plated brass.  
Refer to Appendix for Coaxial Cable Characteristics.  
Refer to recommended assembly tools in Tool Section.

# Type N

## Panel Mount Receptacles

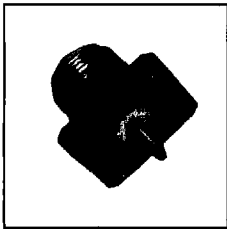


**Flange Mount Plug Receptacle**

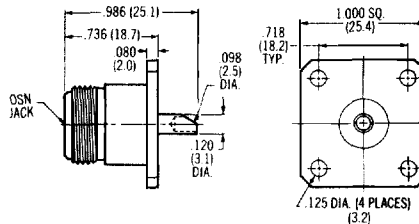


Captured Center Contact Solder Terminal*	
Part Number	3051-0000-10

Finish: Nickel plated brass.  
\*Contact captivation per U.S. patent number 3,292,117

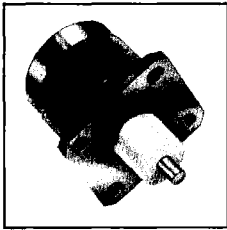


**Flange Mount Jack Receptacle**

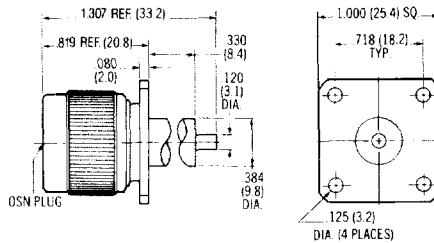


Captured Center Contact Solder Pot Terminal*	
Part Number	3052-0000-10

Finish: Nickel plated brass.  
\*Contact captivation per U.S. patent number 3,292,117



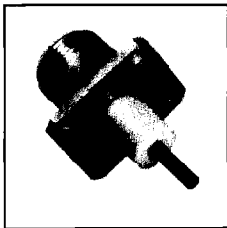
**Flange Mount Plug Receptacle**



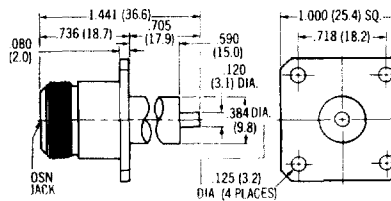
Non-Captured Center Contact Straight Terminal	
Part Number	3051-1200-10

Captured Center Contact Straight Terminal*	
Part Number	3051-1201-10

Finish: Nickel plated brass.  
\*Contact captivation per U.S. patent number 3,292,117



**Flange Mount Jack Receptacle**



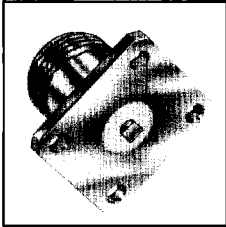
Non-Captured Center Contact Straight Terminal	
Part Number	3052-1200-10

Captured Center Contact Straight Terminal*	
Part Number	3052-1201-10

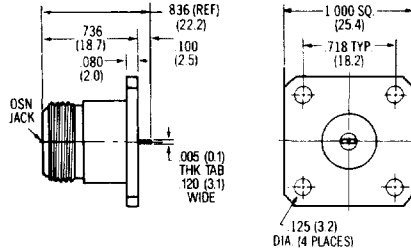
Finish: Nickel plated brass.  
\*Contact captivation per U.S. patent number 3,292,117

# Type N

## Panel Mount • Terminals

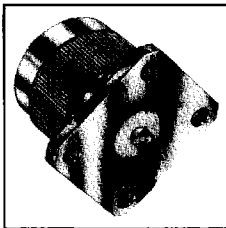


**Flange Mount Jack Receptacle**

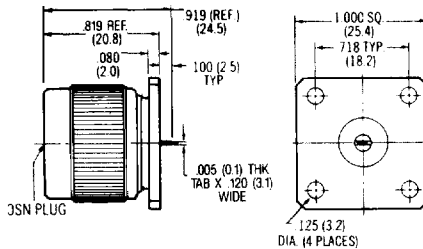


Captured Center Contact Tab Terminal*		
<b>Part Number</b>	<b>3052-1648-10</b>	

Finish: Nickel plated brass.  
\*Contact captivation per U.S. patent number 3,292,117



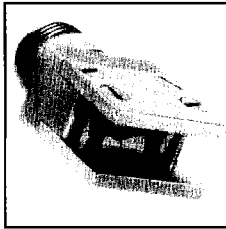
**Flange Mount Plug Receptacle**



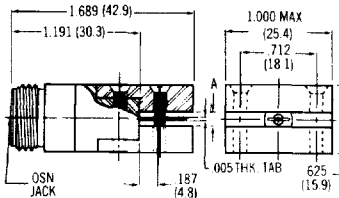
Captured Center Contact Tab Terminal*		
<b>Part Number</b>	<b>3051-1648-10</b>	

Finish: Nickel plated brass.  
\*Contact captivation per U.S. patent number 3,292,117

## End • Surface Launch Use On Strip Transmission Line Circuits



**End Launch Jack**

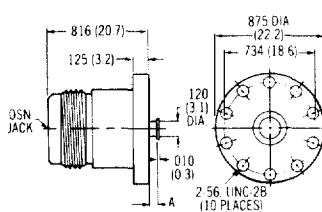


Captured Center Contact Tab Terminal*					
<b>Stripline Size</b>	1/8		1/4		3/8
<b>Part Number</b>	<b>3070-1402-10</b>	<b>3070-1403-10</b>	<b>3070-1404-10</b>		
<b>Dim. A</b>	Inches (mm)	Inches (mm)	Inches (mm)		Inches (mm)
	.125 (3.2)	.250 (6.4)	.375 (9.5)		

Finish: Nickel plated brass.  
\*Contact captivation per U.S. patent number 3,292,117



**Surface Launch Jack**

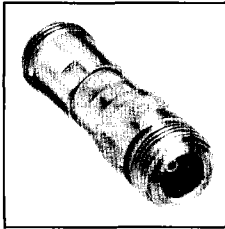


Non-Captured Center Contact Turret Terminal*					
<b>Stripline Size</b>	1/8		1/4		3/8
<b>Part Number</b>	<b>3066-1442-10</b>	<b>3066-1443-10</b>	<b>3066-1444-10</b>		
<b>Dim. A</b>	Inches (mm)	Inches (mm)	Inches (mm)		Inches (mm)
	.063 (1.6)	.125 (3.2)	.187 (4.8)		

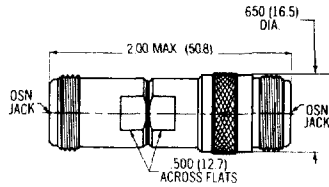
Finish: Nickel plated brass.

# Type N

## In-Series Adapters

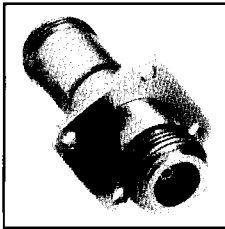


**Jack to Jack Adapter**

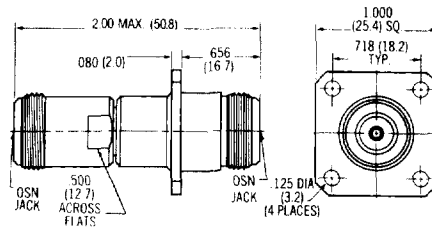


Part Number	3080-0000-00
-------------	--------------

Finish: Passivated stainless steel.



**Jack to Jack Adapter Flange Mount**

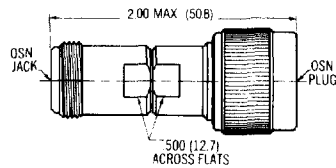


Part Number	3080-2302-00
-------------	--------------

Finish: Passivated stainless steel.



**Jack to Plug Adapter**



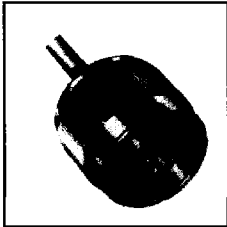
Part Number	3082-0000-00
-------------	--------------

Finish: Passivated stainless steel.

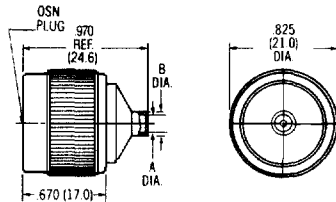
# Type N

For Semi-Rigid Cable • 18.0 GHz

## Direct Solder Attachment

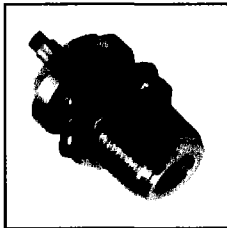


**Straight Cable Plug**

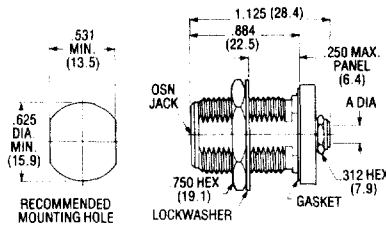


Cable	RG 402/U (.141)	RG 405/U (.085)	.141
Cable Dielectric	Solid PTFE	Solid PTFE	Microporous PTFE
Part Number	<b>3001-7941-00</b>	<b>3001-7985-00</b>	<b>3001-7943-02</b>
Dim. A	Inches (mm) .144 Min. (3.7)	Inches (mm) .089 Min. (2.3)	Inches (mm) .144 Min. (3.7)
Dim. B	.180 (4.6)	.120 (3.0)	.180 (4.6)

Finish: Housing is stainless steel, gold plated. Coupling nut is passivated stainless steel. Refer to Appendix for Coaxial Cable Characteristics.



**Bulkhead Feedthrough Cable Jack**



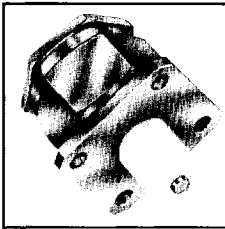
Cable	RG 402/U (.141)	RG 405/U (.085)	.141
Cable Dielectric	Solid PTFE	Solid PTFE	Microporous PTFE
Part Number	<b>3604-7841-02</b>	<b>3604-7885-02</b>	<b>3604-7843-02</b>
Dim. A	Inches (mm) .144 Min. (3.7)	Inches (mm) .089 Min. (2.3)	Inches (mm) .144 Min. (3.7)

Finish: Housings and mounting nut are passivated stainless steel. The cable adapter section is gold plated for solder attachment. Refer to Appendix for Coaxial Cable Characteristics.

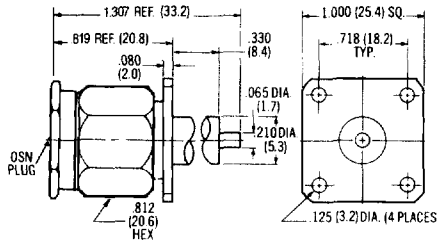
# Type N

For Panel Mount • 18.0 GHz

## Straight Terminal

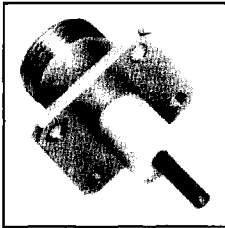


Flange Mount Plug Receptacle

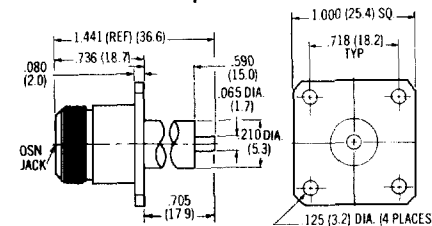


Captured Center Contact Straight Terminal*	
Part Number	3651-1201-02

Finish: Passivated stainless steel. For gold plate, change the Part Number suffix from -02 to -00.  
Refer to Appendix for Coaxial Cable Characteristics.  
\*Contact captivation per U.S. patent number 3,292,117.



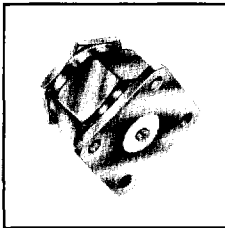
Flange Mount Jack Receptacle



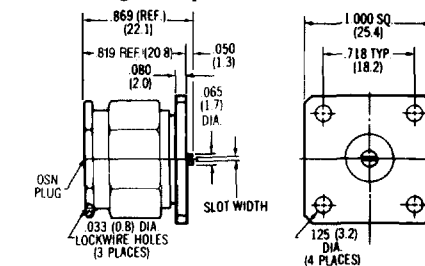
Captured Center Contact Straight Terminal*	
Part Number	3652-1201-02

Finish: Passivated stainless steel. For gold plate, change the Part Number suffix from -02 to -00.  
Refer to Appendix for Coaxial Cable Characteristics.  
\*Contact captivation per U.S. patent number 3,292,117.

## Slot Terminal

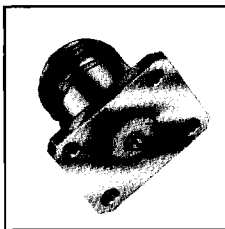


Flange Mount Plug Receptacle

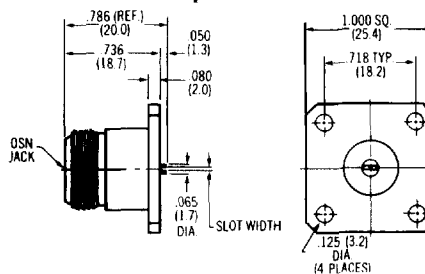


Captured Center Contact Slot Terminal*	
Part Number	Slot Width Inches (mm)
3651-1640-02	.012 (0.3)
3651-1642-02	.018 (0.5)
3651-1644-02	.028 (0.7)
3651-1646-02	.036 (0.9)

Finish: Passivated stainless steel. For gold plate, change the Part Number suffix from -02 to -00.  
\*Contact captivation per U.S. patent number 3,292,117.



Flange Mount Jack Receptacle



Captured Center Contact Slot Terminal*	
Part Number	Slot Width Inches (mm)
3652-1640-02	.012 (0.3)
3652-1642-02	.018 (0.5)
3652-1644-02	.028 (0.7)
3652-1646-02	.036 (0.9)

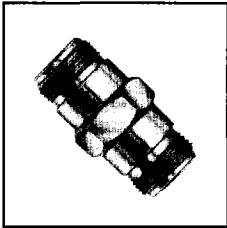
Finish: Passivated stainless steel. For gold plate, change the Part Number suffix from -02 to -00.  
\*Contact captivation per U.S. patent number 3,292,117.

M/A-COM, Inc.

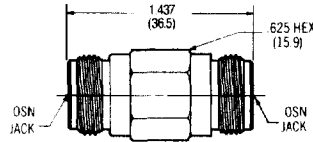
191

# Type N

## In Series Adapters • 18.0 GHz

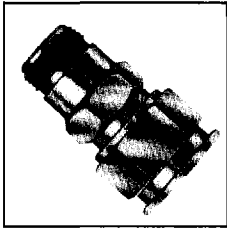


**Jack to Jack Adapter**

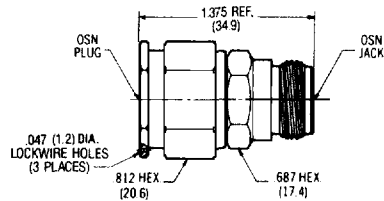


<b>Part Number</b>	<b>3680-0000-02</b>
--------------------	---------------------

Finish: Passivated stainless steel. For gold plate, change the Part Number suffix from -02 to -00.

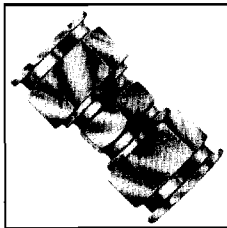


**Plug to Jack Adapter**

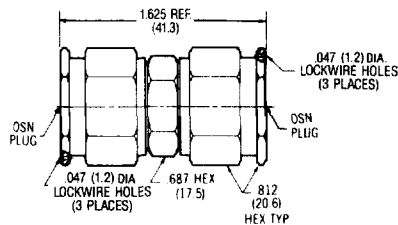


<b>Part Number</b>	<b>3682-0000-02</b>
--------------------	---------------------

Finish: Passivated stainless steel. For gold plate, change the Part Number suffix from -02 to -00.

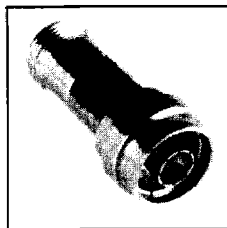


**Plug to Plug Adapter**

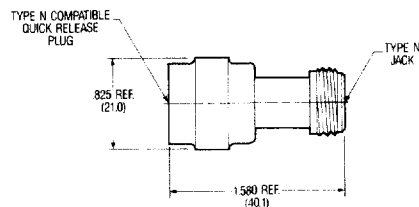


<b>Part Number</b>	<b>3681-0000-02</b>
--------------------	---------------------

Finish: Passivated stainless steel. For gold plate, change the Part Number suffix from -02 to -00.



**Plug to Jack Quick Release Test Adapter**



<b>Part Number</b>	<b>3682-2305-10</b>
--------------------	---------------------

Finish: Nickel plated brass.