

Customer Information Sheet

DRAWING No.: S5131-XX / S5141-XX

SHEET 2 OF 2

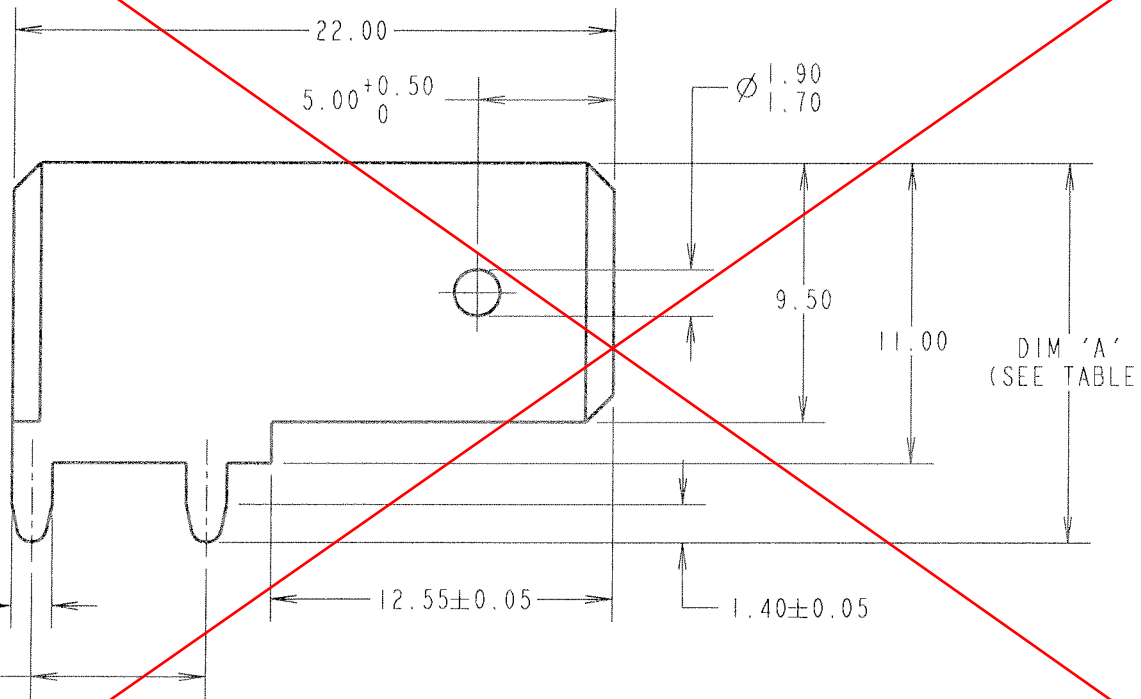
IF IN DOUBT - ASK

Ⓢ

NOT TO SCALE

THIRD ANGLE PROJECTION

ALL DIMENSIONS IN mm



ORDER CODE:

S5XX1-XX

TYPE: 13 OR 14 (SEE TABLE)

FINISH:

06 - TIN/LEAD

46 - 100% TIN

OBSOLETE

RA	10	22.06.07	9801
NAME	ISS.	DATE	C/NOTE
APPROVED: <i>[Signature]</i>			
CHECKED: <i>[Signature]</i>			
DRAWN: I. SANDY			
CUSTOMER REF.:			
ASSEMBLY DRG:			

PART No.	DIM 'A'	PCB THICKNESS
S5131-XX	13.85-14.15	1.60
S5141-XX	14.65-14.95	2.40

- NOTES:
- RECOMMENDED MOUNTING HOLE SIZE = $\varnothing 1.74 \pm 0.06$ mm.
 - PRODUCT IS PACKED IN QUANTITIES OF 1K.

HARWIN

THIS DRAWING AND ANY INFORMATION OR DESCRIPTIVE MATTER SET OUT HEREON ARE CONFIDENTIAL AND COPYRIGHT PROPERTY OF THE HARWIN GROUP AND MUST NOT BE DISCLOSED, LOANED, COPIED OR USED FOR MANUFACTURING, TENDERING OR FOR ANY OTHER PURPOSE WITHOUT THEIR WRITTEN PERMISSION.

TOLERANCES

X. = ± 1 mm
 X.X = ± 0.25 mm
 X.XX = ± 0.10 mm
 X.XXX = ± 0.01 mm
 ANGLES = $\pm 5^\circ$
 UNLESS STATED

MATERIAL:

BRASS CW508L H150
 TO BS EN 1652 (CuZn37 HARD)

TITLE:

9.5mm BLADE HORIZONTAL
 TAB TERMINAL (LOOSE)

HARWIN USA
 TEL: 603 893 5376
 FAX: 603 893 5396
 mis@harwin.com

HARWIN Europe (UK)
 TEL: 023 9231 4545
 FAX: 023 9231 4590
 mis@harwin.co.uk

HARWIN Asia
 TEL: +65 6 779 4909
 FAX: +65 6 779 3868
 mis@harwin.com.sg

FINISH: SEE TABLE

S/AREA:

mm²

DRAWING NUMBER:

S5131-XX / S5141-XX

SHT
 1 OF 2