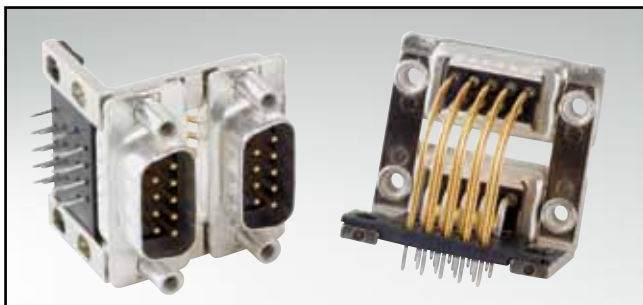


C-FILTER D-SUB STANDARD – DUAL PORT

Solder pin – Angled – Precision machined contacts – .625" / 15.88 mm connector spacing

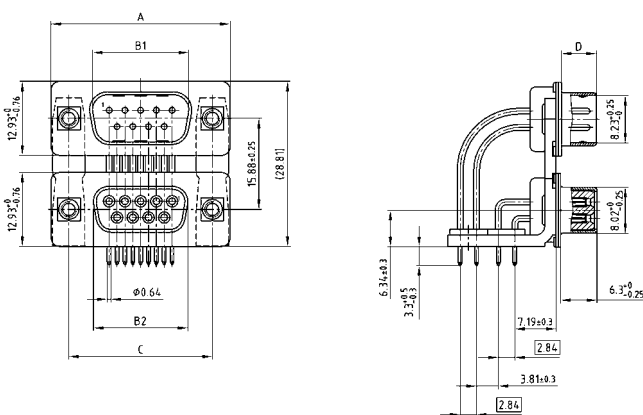


RoHS compliant – CSA listed, File No.: LR 115000-1 – UL listed, File No.: E202784

DESCRIPTION

- Variations: plug – plug; socket – socket; plug – socket
- Mounting styles:
 - with mounting bracket and 4-40 UNC threaded insert
 - with mounting bracket and 4-40 UNC front spacer
- Quality class 3 (also available in quality class 1)
- Shell: Steel tin plated (brass tin plated on request)

PRODUCT DRAWING

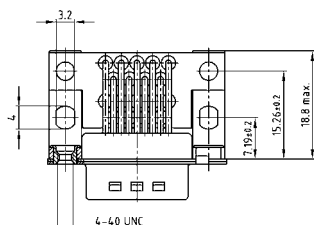


No. of pos.	A -0.76	B1 +0.25	B2 -0.25	C	D ±0.30
2X 09	31.19	16.79	16.46	25.00 ^{+0.12} / _{-0.13}	6.12
2X 15	39.52	25.12	24.79	33.30 ^{+0.15} / _{-0.10}	6.12
2X 25	53.42	38.84	38.50	47.04 ^{+0.13} / _{-0.13}	5.99
2X 37	69.70	55.30	54.96	63.50 ^{+0.13} / _{-0.13}	5.99

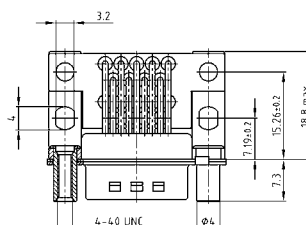
Graphically representation of only one variant!

PCB layout: Kat1iU5A / Kat1iU6A

Mounting style: Threaded insert



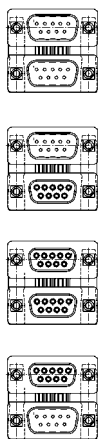
Mounting style: Front spacer



ORDER DATA

Capacitance 180 pF

VERSION WITH 4-40 UNC THREADED INSERT



No. of pos.	Design	Part Number
09/09	Plug upper / Plug bottom	241 A 22300 X
15/15	Plug upper / Plug bottom	241 A 22310 X
25/25	Plug upper / Plug bottom	241 A 22320 X
37/37	Plug upper / Plug bottom	241 A 22330 X
09/09	Plug upper / Socket bottom	241 A 22340 X
15/15	Plug upper / Socket bottom	241 A 22350 X
25/25	Plug upper / Socket bottom	241 A 22360 X
37/37	Plug upper / Socket bottom	241 A 22370 X
09/09	Socket upper / Socket bottom	242 A 22000 X
15/15	Socket upper / Socket bottom	242 A 22010 X
25/25	Socket upper / Socket bottom	242 A 22020 X
37/37	Socket upper / Socket bottom	242 A 22030 X
09/09	Socket upper / Plug bottom	242 A 22040 X
15/15	Socket upper / Plug bottom	242 A 22050 X
25/25	Socket upper / Plug bottom	242 A 22060 X
37/37	Socket upper / Plug bottom	242 A 22070 X

VERSION WITH 4-40 UNC FRONT SPACER

No. of pos.	Design	Part Number
09/09	Plug upper / Plug bottom	241 A 17420 X
15/15	Plug upper / Plug bottom	241 A 17430 X
25/25	Plug upper / Plug bottom	241 A 17440 X
37/37	Plug upper / Plug bottom	241 A 17450 X
09/09	Plug upper / Socket bottom	241 A 17460 X
15/15	Plug upper / Socket bottom	241 A 17470 X
25/25	Plug upper / Socket bottom	241 A 17480 X
37/37	Plug upper / Socket bottom	241 A 17490 X
09/09	Socket upper / Socket bottom	242 A 22080 X
15/15	Socket upper / Socket bottom	242 A 22090 X
25/25	Socket upper / Socket bottom	242 A 22100 X
37/37	Socket upper / Socket bottom	242 A 22110 X
09/09	Socket upper / Plug bottom	242 A 22120 X
15/15	Socket upper / Plug bottom	242 A 22130 X
25/25	Socket upper / Plug bottom	242 A 22140 X
37/37	Socket upper / Plug bottom	242 A 22150 X

C-FILTER D-SUB STANDARD – DUAL PORT

Solder pin – Angled – Precision machined contacts – .625" / 15.88 mm connector spacing

ORDER DATA

Capacitance 370 pF

	VERSION WITH 4-40 UNC THREADED INSERT				VERSION WITH 4-40 UNC FRONT SPACER			
	No. of pos.	Design	Part Number		No. of pos.	Design	Part Number	
	09/09	Plug upper / Plug bottom	241 A 14130	X	09/09	Plug upper / Plug bottom	241 A 14370	X
	15/15	Plug upper / Plug bottom	241 A 14140	X	15/15	Plug upper / Plug bottom	241 A 14380	X
	25/25	Plug upper / Plug bottom	241 A 14150	X	25/25	Plug upper / Plug bottom	241 A 14390	X
	37/37	Plug upper / Plug bottom	241 A 14160	X	37/37	Plug upper / Plug bottom	241 A 14400	X
	09/09	Plug upper / Socket bottom	241 A 14250	X	09/09	Plug upper / Socket bottom	241 A 14490	X
	15/15	Plug upper / Socket bottom	241 A 14260	X	15/15	Plug upper / Socket bottom	241 A 14500	X
	25/25	Plug upper / Socket bottom	241 A 14270	X	25/25	Plug upper / Socket bottom	241 A 14510	X
	37/37	Plug upper / Socket bottom	241 A 14280	X	37/37	Plug upper / Socket bottom	241 A 14520	X
	09/09	Socket upper / Socket bottom	242 A 14020	X	09/09	Socket upper / Socket bottom	242 A 14260	X
	15/15	Socket upper / Socket bottom	242 A 14030	X	15/15	Socket upper / Socket bottom	242 A 14270	X
	25/25	Socket upper / Socket bottom	242 A 14040	X	25/25	Socket upper / Socket bottom	242 A 14280	X
	37/37	Socket upper / Socket bottom	242 A 14050	X	37/37	Socket upper / Socket bottom	242 A 14290	X
	09/09	Socket upper / Plug bottom	242 A 14140	X	09/09	Socket upper / Plug bottom	242 A 14380	X
	15/15	Socket upper / Plug bottom	242 A 14150	X	15/15	Socket upper / Plug bottom	242 A 14390	X
	25/25	Socket upper / Plug bottom	242 A 14160	X	25/25	Socket upper / Plug bottom	242 A 14400	X
	37/37	Socket upper / Plug bottom	242 A 14170	X	37/37	Socket upper / Plug bottom	242 A 14410	X

Capacitance 830 pF

	VERSION WITH 4-40 UNC THREADED INSERT				VERSION WITH 4-40 UNC FRONT SPACER			
	No. of pos.	Design	Part Number		No. of pos.	Design	Part Number	
	09/09	Plug upper / Plug bottom	241 A 14210	X	09/09	Plug upper / Plug bottom	241 A 14450	X
	15/15	Plug upper / Plug bottom	241 A 14220	X	15/15	Plug upper / Plug bottom	241 A 14460	X
	25/25	Plug upper / Plug bottom	241 A 14230	X	25/25	Plug upper / Plug bottom	241 A 14470	X
	37/37	Plug upper / Plug bottom	241 A 14240	X	37/37	Plug upper / Plug bottom	241 A 14480	X
	09/09	Plug upper / Socket bottom	241 A 14330	X	09/09	Plug upper / Socket bottom	241 A 14570	X
	15/15	Plug upper / Socket bottom	241 A 14340	X	15/15	Plug upper / Socket bottom	241 A 14580	X
	25/25	Plug upper / Socket bottom	241 A 14350	X	25/25	Plug upper / Socket bottom	241 A 14590	X
	37/37	Plug upper / Socket bottom	241 A 14360	X	37/37	Plug upper / Socket bottom	241 A 14600	X
	09/09	Socket upper / Socket bottom	242 A 14100	X	09/09	Socket upper / Socket bottom	242 A 14340	X
	15/15	Socket upper / Socket bottom	242 A 14110	X	15/15	Socket upper / Socket bottom	242 A 14350	X
	25/25	Socket upper / Socket bottom	242 A 14120	X	25/25	Socket upper / Socket bottom	242 A 14360	X
	37/37	Socket upper / Socket bottom	242 A 14130	X	37/37	Socket upper / Socket bottom	242 A 14370	X
	09/09	Socket upper / Plug bottom	242 A 14220	X	09/09	Socket upper / Plug bottom	242 A 14460	X
	15/15	Socket upper / Plug bottom	242 A 14230	X	15/15	Socket upper / Plug bottom	242 A 14470	X
	25/25	Socket upper / Plug bottom	242 A 14240	X	25/25	Socket upper / Plug bottom	242 A 14480	X
	37/37	Socket upper / Plug bottom	242 A 14250	X	37/37	Socket upper / Plug bottom	242 A 14490	X

Capacitance 1300 pF

	VERSION WITH 4-40 UNC THREADED INSERT				VERSION WITH 4-40 UNC FRONT SPACER			
	No. of pos.	Design	Part Number		No. of pos.	Design	Part Number	
	09/09	Plug upper / Plug bottom	241 A 14170	X	09/09	Plug upper / Plug bottom	241 A 14410	X
	15/15	Plug upper / Plug bottom	241 A 14180	X	15/15	Plug upper / Plug bottom	241 A 14420	X
	25/25	Plug upper / Plug bottom	241 A 14190	X	25/25	Plug upper / Plug bottom	241 A 14430	X
	37/37	Plug upper / Plug bottom	241 A 14200	X	37/37	Plug upper / Plug bottom	241 A 14440	X
	09/09	Plug upper / Socket bottom	241 A 14290	X	09/09	Plug upper / Socket bottom	241 A 14530	X
	15/15	Plug upper / Socket bottom	241 A 14300	X	15/15	Plug upper / Socket bottom	241 A 14540	X
	25/25	Plug upper / Socket bottom	241 A 14310	X	25/25	Plug upper / Socket bottom	241 A 14550	X
	37/37	Plug upper / Socket bottom	241 A 14320	X	37/37	Plug upper / Socket bottom	241 A 14560	X
	09/09	Socket upper / Socket bottom	242 A 14060	X	09/09	Socket upper / Socket bottom	242 A 14300	X
	15/15	Socket upper / Socket bottom	242 A 14070	X	15/15	Socket upper / Socket bottom	242 A 14310	X
	25/25	Socket upper / Socket bottom	242 A 14080	X	25/25	Socket upper / Socket bottom	242 A 14320	X
	37/37	Socket upper / Socket bottom	242 A 14090	X	37/37	Socket upper / Socket bottom	242 A 14330	X
	09/09	Socket upper / Plug bottom	242 A 14180	X	09/09	Socket upper / Plug bottom	242 A 14420	X
	15/15	Socket upper / Plug bottom	242 A 14190	X	15/15	Socket upper / Plug bottom	242 A 14430	X
	25/25	Socket upper / Plug bottom	242 A 14200	X	25/25	Socket upper / Plug bottom	242 A 14440	X
	37/37	Socket upper / Plug bottom	242 A 14210	X	37/37	Socket upper / Plug bottom	242 A 14450	X