

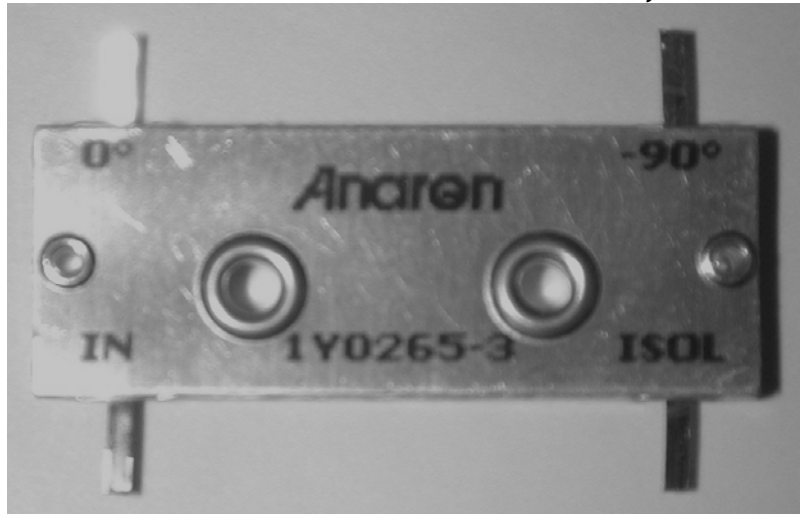
### Hybrid Couplers 3 dB, 90°

#### Applications

- Microstrip Circuits
- Dividers/Combiners
- Switch Networks
- Balanced Detectors
- Antenna Feeds

#### Features

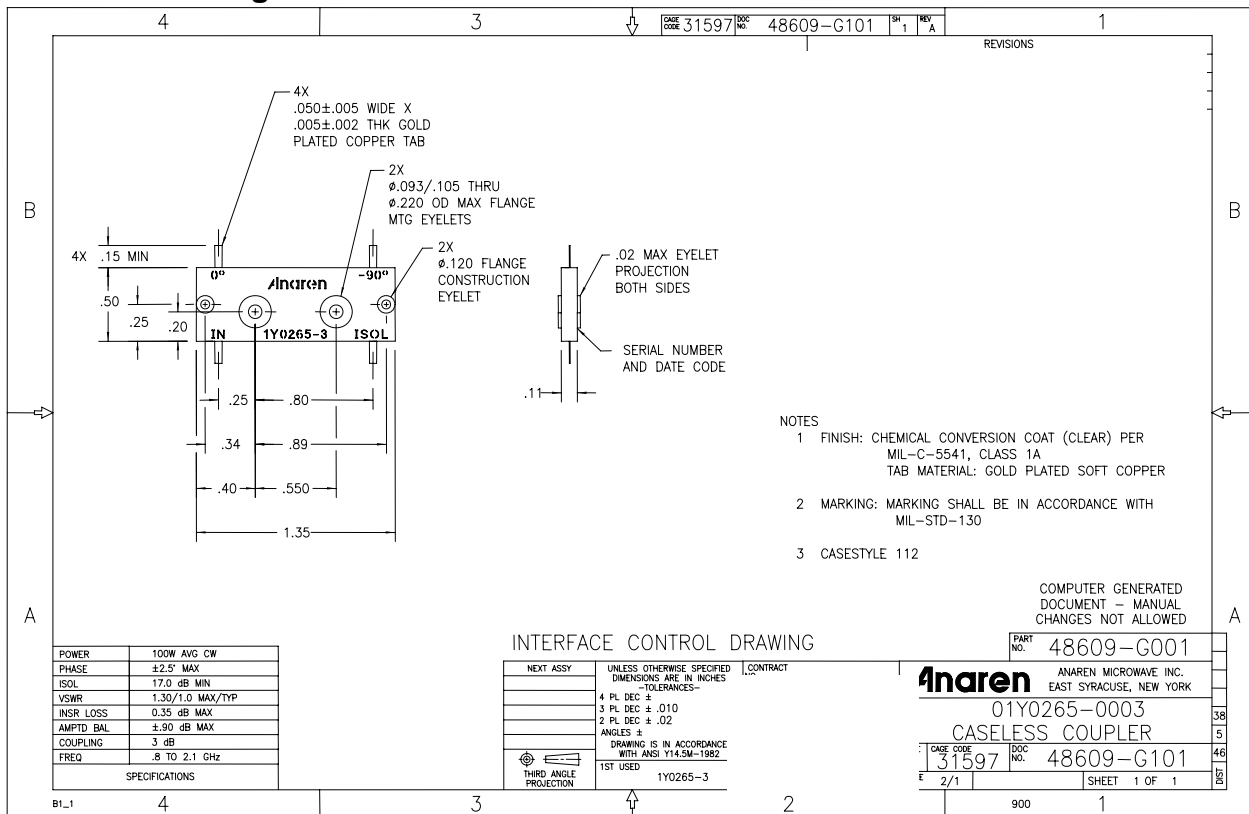
- 0.8 – 2.1 GHz
- Welded Tab mount
- Reliable Performance
- Meets MIL-E-5400 Class 3 Requirements



**NOTES:** Anaren Power rating applies when solder tab/coupler interface has been conformally coated.

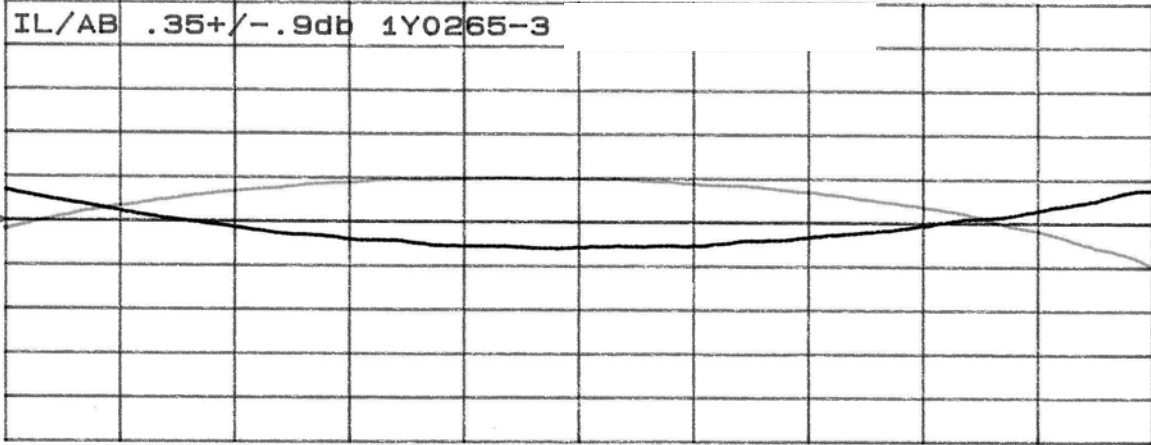
Electrical and Mechanical Specifications subject to change without notice.

#### Outline Drawing

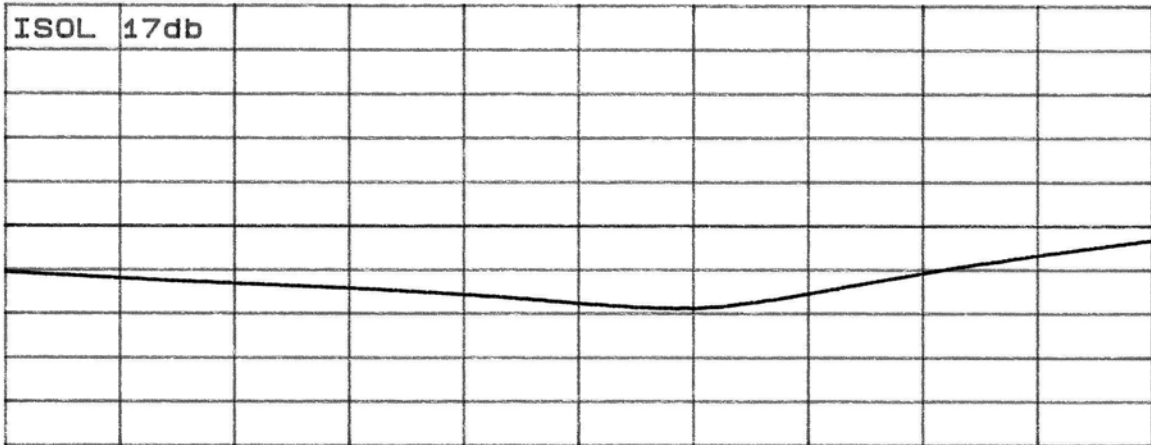


Typical Test Data Plots

CH1 S<sub>21</sub>&M log MAG 0.9 dB/ REF -3.35 dB



CH2 MEM log MAG 10 dB/ REF -17 dB



START 0.8000 GHz

STOP 2.1000 GHz

# Mouser Electronics

Authorized Distributor

Click to View Pricing, Inventory, Delivery & Lifecycle Information:

[Anaren:](#)

[1Y0265-3](#)