

1110 Patch Plugs

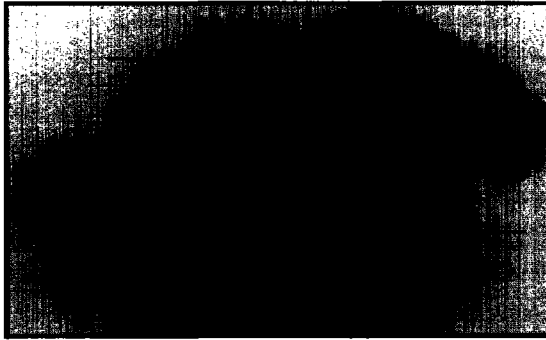


Figure 4-12. 1110 Patch Plugs

The 1110 Patch Plug provides continuity between two pairs of cable terminations on adjacent index strips. After properly wiring cable pairs on the index strip and installing the 110-Type Connecting Blocks, the 1110 Patch Plug is seated on top of the connecting blocks, completing a connection between the two pairs. If future rearrangements are necessary, the patch plugs may be removed and either a patch cord or cross-connect used to connect the desired cable pairs. Test access points are provided on the patch plug. When a patch plug is removed, the circuit is disabled and test access is permitted to both sides of the circuit.

Subsystem: Administration

Product Number	Description	Qty/Package	Comcode
1110AC1-1	Clear Patch Plug	Pkg. of 5	104 408 497
1110AR1-1	Red Patch Plug	Pkg. of 5	104 408 505

709 QuickSnap Connector

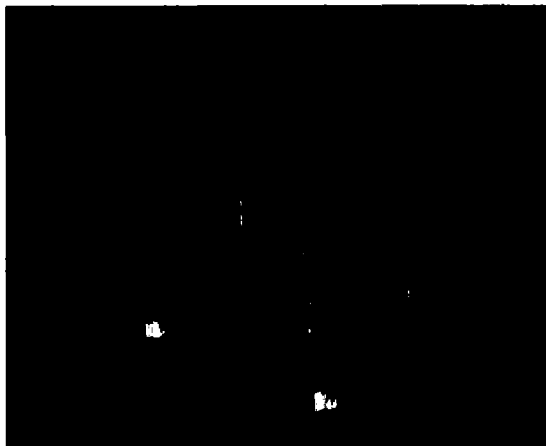


Figure 4-13. 709 QuickSnap Connector

The 709 *QuickSnap* Connector is a single-pair connector used in maintenance applications for modular splicing systems.

Pliers are the only tool required. A cartridge tool, ordered separately, may be used to press the cartridge version (SCT or SDT) of the 709 Connectors.

Subsystem: Campus Backbone

Product Number	Comcode
709 SC Connector (Filled)	106 795 222
709 SD Connector (Dry-Flame Retardant)	106 795 230
709 CD Half-Tap Adapter (Dry-Flame Retardant)	104 041 587