

### Electrical

(REV. X)

#### ELECTRICAL SPECIFICATIONS

##### URNS RATIO :

(1-2) : (16-15) : 1 : 1 ±3%  
 (7-8) : (10-9) : 1 : 1 ±3%

##### INDUCTANCE :

(1-2)=(7-8) : 40uH MIN. @ 0.01V ; 10KHz

##### LEAKAGE INDUCTANCE:

1-2 (WITH 16 AND 15 SHORT) : 0.1 uH MAX. @ 1MHz  
 7-8 (WITH 10 AND 9 SHORT) : 0.1 uH MAX. @ 1MHz

##### INTERWINDING CAPACITANCE:

(1,2) TO (16,15) : 10pf MAX @ 1MHz  
 (7,8) TO (10,9) : 10pf MAX. @ 1MHz

##### D.C. RESISTANCE:

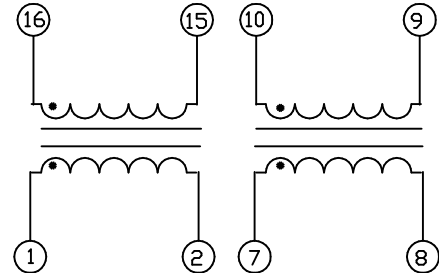
(16-15)=(10-9) : 0.25 ohms Max.  
 (1-2)=(7-8) : 0.25 ohms Max.

##### DIELECTRIC VOLTAGE WITHSTAND:

(1,2) TO (16,15) : 1500VAC for 60 seconds  
 (7,8) TO (10,9) : 1500VAC for 60 seconds

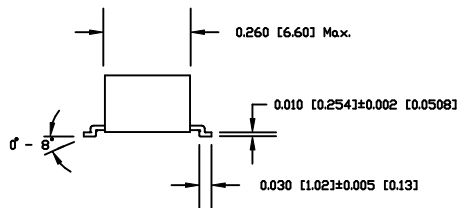
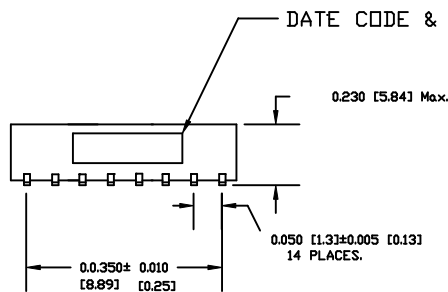
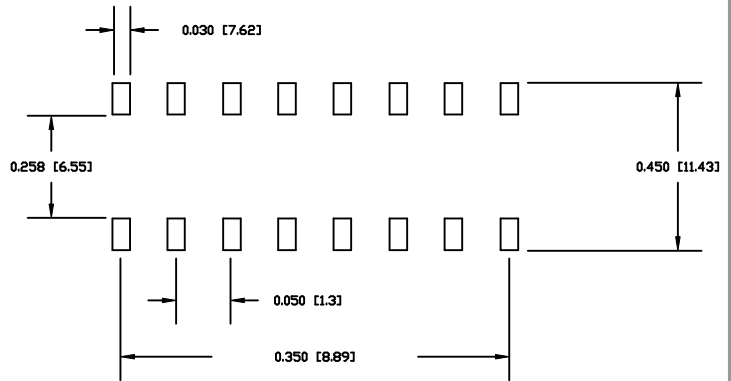
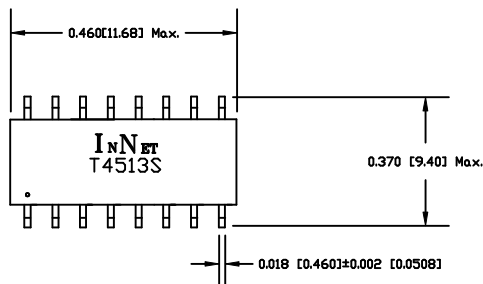
##### RETURN LOSS:

(75 OHM LOAD)  
 860kHz TO 1.72MHz : -12 dB MIN.  
 1.72MHz TO 34.4MHz : -18 dB MIN.  
 34.4MHz TO 51.6MHz : -14 dB MIN.



### Mechanical

#### SUGGESTED PAD LAYOUT



#### NOTES:

- 1.0 LEADS MEET THE SOLDERABILITY REQUIREMENTS TO MIL-STD-202 METHOD 208.
- 2.0 COPLANARITY OF PINS IS .004 [0.102] MAX.
- 3.0 THE CASE IS UL 94 V-0 BLACK PLASTIC.