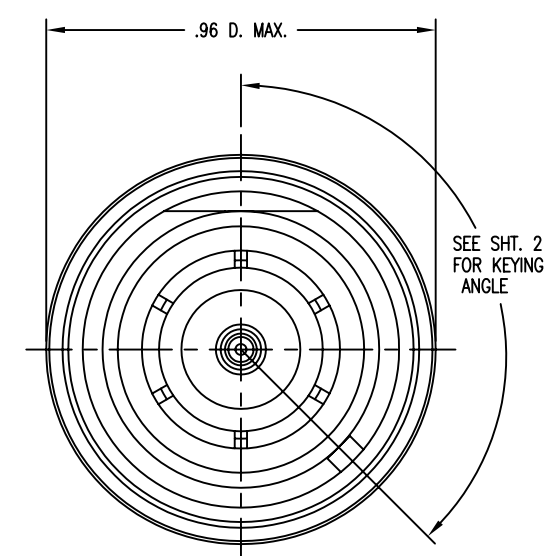
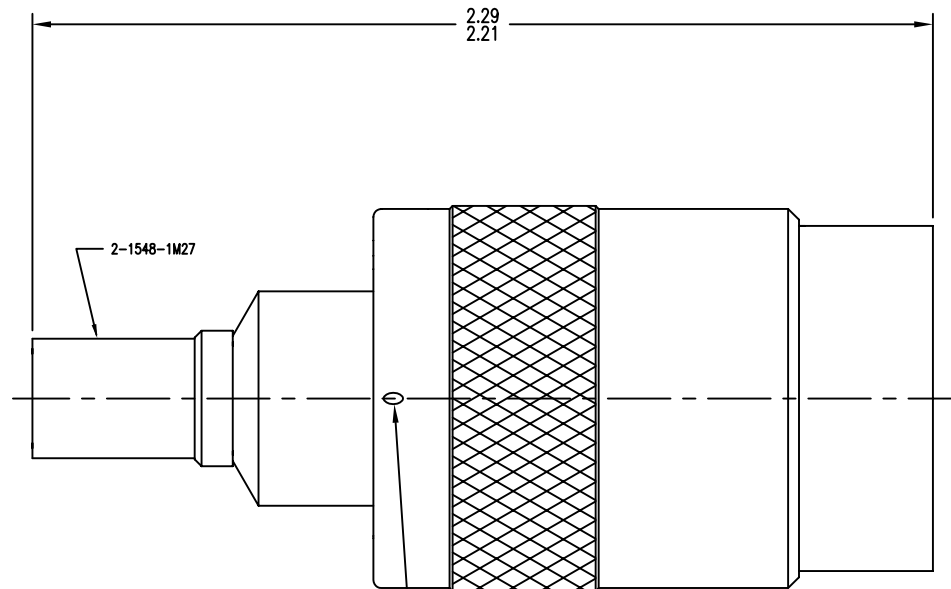


GSD



- NOTES:
- FOR USE WITH BOEING S280W503-3 & BMS13-65 TYPE OG CABLE.
 - FOR CABLING INSTRUCTIONS SEE 3-546-2.
 - FOR CRIMPING USE DIE KTH-2231.
 - INTERFACE PER MIL-STD-348, FIG. 309-1.
 - CENTER CONTACT (1-903-24MA9) SUPPLIED UNASSEMBLED.
 - MARK PACKAGE: KINGS 2985-7-*
YRWK (DATE CODE)
 - MATERIALS:
 - INSULATOR: TEFLON, ASTM-D4894
 - GASKET: SILICONE-A-A-59588, CLASS 1B
 - C-RING: PHOS. BRONZE, ASTM-B103
 - K-GRIP SLEEVE: COM. BRONZE TUBE, ASTM-B135,
 - OUTER CONTACT: BER. COP., ASTM-B196
 - ALL OTHER PARTS: BRASS, ASTM-B16
 - FINISHES:
 - CENTER CONTACT: GOLD: ASTM-B488
 - ALL OTHER METAL PARTS: KINGS TARNISH RESISTANT FINISH (TR-5)
 - ELECTRICAL CHARACTERISTICS:
 - NOMINAL IMPEDANCE: 50 OHMS
 - VOLTAGE RATING: 1000 VRMS
 - FREQUENCY RANGE: DC TO 11GHz

2985-7-* (SHEET 1 OF 2)

REVISIONS

| ISSUE | CHANGES |
|-------|--------------------------|
| 0 | ER 39387 DRK 01/13/06 |

SCALE 3:1

APPROX SURFACE AREA

REF: EQR 1001

USED ON

REF: BOEING

PLUG, SC
(KEYED)

| | | | |
|-------|-----|------|----------|
| DRAWN | DCT | DATE | 12/20/05 |
|-------|-----|------|----------|

| | | | |
|--------|-----|------|----------|
| DESIGN | DCT | DATE | 12/20/05 |
|--------|-----|------|----------|

| | |
|-------|------|
| APPR. | DATE |
|-------|------|

KINGS
ELECTRONICS CO., INC.
ROCK HILL, SOUTH CAROLINA 29730

2985-7-*
(SHEET 1 OF 2)

GSD

| KINGS PART NO. | KEYING ANGLE |
|----------------|--------------|
| 2985-7-1 | 42° |
| 2985-7-2 | 54° |
| 2985-7-3 | 66° |
| 2985-7-4 | 78° |
| 2985-7-5 | 90° |
| 2985-7-6 | 102° |
| 2985-7-7 | 114° |
| 2985-7-8 | 126° |
| 2985-7-9 | 138° |
| 2985-7-10 | 150° |
| 2985-7-11 | 162° |
| 2985-7-12 | 174° |
| 2985-7-13 | 186° |
| 2985-7-14 | 198° |
| 2985-7-15 | 210° |
| 2985-7-16 | 222° |
| 2985-7-17 | 234° |
| 2985-7-18 | 246° |
| 2985-7-19 | 258° |
| 2985-7-20 | 270° |
| 2985-7-21 | 282° |
| 2985-7-22 | 294° |
| 2985-7-23 | 306° |
| 2985-7-24 | 318° |

GSD

2985-7-* (SHT 2 OF 2)

| REVISIONS | |
|-----------|--------------------------|
| ISSUE | CHANGES |
| 0 | ER 39387 DRK 01/13/06 |

SCALE 1:1

APPROX SURFACE AREA

USED ON

REF:

ANGLE TABLE

| | | | |
|-------|-----|------|----------|
| DRAWN | DCT | DATE | 12/20/05 |
|-------|-----|------|----------|

| | | | |
|--------|-----|------|----------|
| DESIGN | DCT | DATE | 12/20/05 |
|--------|-----|------|----------|

| | |
|-------|------|
| APPR. | DATE |
|-------|------|

KINGS
ELECTRONICS CO., INC.
ROCK HILL, SOUTH CAROLINA 29730

2985-7-*
(SHEET 2 OF 2)

GSD