



Type 6957 AC Navy Overload Relay – N750



6957ED14-3A

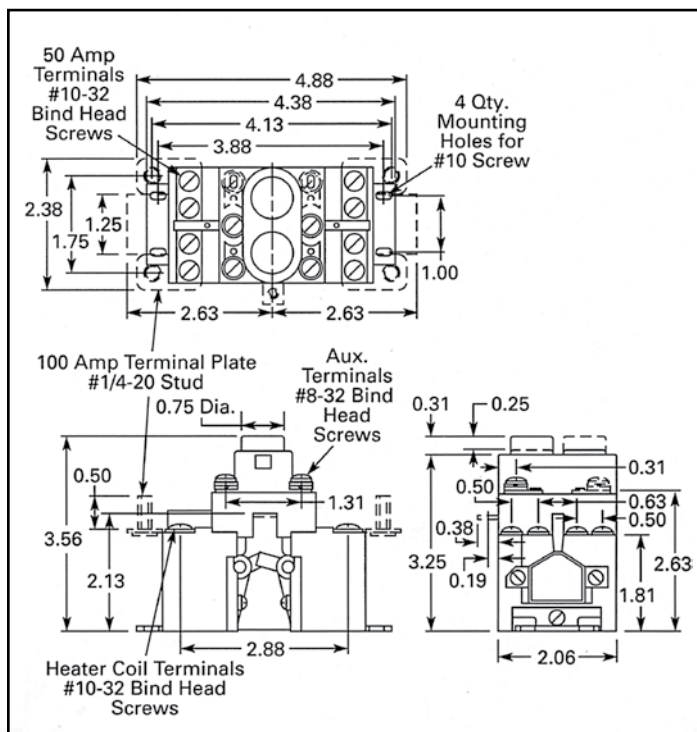
When ordering specify

- Catalog number

Specifications

- MIL-SPEC.....MIL-DTL-2212
- Compensation.....Insensitive to variations in temperature – Less than 3% change in trip current for each 10°C change in ambient
- Trip Mechanism.....Eutectic alloy
- Number of Heaters...2 (phase)
- Motor Current Range 0.5 to 126 Amps Ⓜ
- Relay Weigh1.0 Pounds Ⓜ

Approximate Dimensions in Inches



Overload Relays

Number of Buttons	Terminal Rating Amperes	Markings	Catalog Number
-------------------	-------------------------	----------	----------------

Standard Devices

1	50 100	RESET	6957ED14-1A 6957ED14-6A
	50 100	RESET Ⓜ	6957ED14-26A 6957ED14-36A
	50 100	RESET Ⓜ	6957ED14-24A 6957ED14-25A
	50 100	STOP — RESET	6957ED14-27A 6957ED14-34A
2	50 100	START — STOP/RESET	6957ED14-2A 6957ED14-7A
	50 100	EM. RUN — STOP/RESET	6957ED14-4A 6957ED14-9A
	50 100	START — RESET	6957ED14-5A 6957ED14-10A
3	50 100	EM RUN — START — STOP/RESET	6957ED14-3A 6957ED14-8A

With Remote (Solenoid) Reset Ⓜ

1	50 100	RESET	6957ED14-11_ 6957ED14-16_
	50 100	RESET Ⓜ	6957ED14-15_ 6957ED14-20_
	50 100	RESET Ⓜ	6957ED14-38_ 6957ED14-37_
2	50	START — STOP/RESET	6957ED14-12
	50 100	EM RUN — STOP/RESET	6957ED14-14_ 6957ED14-19_
	100	START — RESET	6957ED14-17_
3	50 100	EM RUN — START — STOP/RESET	6957ED14-13_ 6957ED14-18_

For Heater Coil selection, see Page 60.

Ⓜ Add Suffix Letter for solenoid coil voltage.

Example: 6957ED14-19F. Contact factory for information.

Ⓜ For current limiting reactors or current transformers, contact the factory.

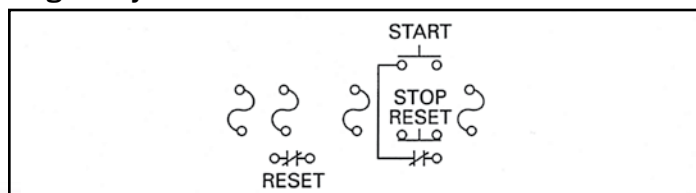
Ⓜ Device supplied with extra terminals.

Ⓜ Device has a Form C contact alarm circuit. Consult factory for application.

Replacement Operator Boots

Number of Buttons	Boot Part Number
1	32-17
2	32-251
3	32-20

Diagram Symbols





Type 6957 AC Navy Overload Relay – N750

Trip Adjustability

The relay may be adjusted to trip at a value between 90 and 110 percent of the rated coil current. Loosening the binding screws that hold the relay heater coil and moving the heater coil out away from the relay will increase the value of current required to trip the relay. Moving the heater coil assembly in will decrease the value of current required to trip the relay. Serrations on the terminal plates and on the underside of the slotted brackets of the heater coil assembly securely lock the heater coil in position when the binding head screws are tightened.

Trip Curves

