

MONOLITHIC QUAD H BRIDGE DRIVER CIRCUIT

DESCRIPTION

The μ PD16833A is a monolithic quad H bridge driver IC which uses power MOS FETs in its driver stage. By using the MOS FETs in the output stage, this driver IC has a substantially improved saturation voltage and power consumption as compared with conventional driver circuits using bipolar transistors.

A low-voltage malfunction prevention function is provided to prevent the IC from malfunctioning when the supply voltage drops. By eliminating the charge pump circuit, the current during power-OFF is drastically decreased.

As the package, a 30-pin plastic shrink SOP is employed to enable the creation of compact, slim application sets.

This driver IC can drive two stepping motors at the same time, and is ideal for driving stepping motors in the lens of a video camera.

FEATURES

- Four H bridge circuits employing power MOS FETs
- Low current consumption by eliminating charge pump
 V_M pin current when power-OFF: 10 μ A MAX. V_{DD} pin current: 10 μ A MAX.
- Input logic frequency: 100 kHz
- 3-V power supply
 Minimum operating supply voltage: 2.5 V
- Low-voltage malfunctioning prevention circuit
- 30-pin plastic shrink SOP (300 mil) (μ PD16833AG3)

ORDERING INFORMATION

Part Number	Package
μ PD16833AG3	30-pin plastic shrink SOP (300 mil)

ABSOLUTE MAXIMUM RATINGS ($T_A = 25\text{ }^\circ\text{C}$)

Parameter	Symbol	Conditions	Rating	Unit
Supply voltage	V_{DD}		-0.5 to +6.0	V
	V_M		-0.5 to +6.0	V
Input voltage	V_{IN}		-0.5 to $V_{DD} + 0.5$	V
H bridge drive current ^{Note 1}	$I_{DR} (DC)$	DC	± 300	mA
Instantaneous H bridge drive current ^{Note 1}	$I_{DR} (pulse)$	$PW \leq 10\text{ ms}$, Duty $\leq 5\%$	± 700	mA
Power dissipation ^{Note 2}	P_T		1.19	W
Peak junction temperature	$T_{CH} (MAX)$		150	$^\circ\text{C}$
Storage temperature range	T_{stg}		-55 to +150	$^\circ\text{C}$

- Notes**
1. Permissible current per phase, when mounted on a printed circuit board
 2. When mounted on a glass epoxy board (10 cm \times 10 cm \times 1 mm)

The information in this document is subject to change without notice. Before using this document, please confirm that this is the latest version.

Not all devices/types available in every country. Please check with local NEC representative for availability and additional information.

Recommended Operating Conditions

Parameter	Symbol	MIN.	TYP.	MAX.	Unit
Supply voltage	V _{DD}	2.5		5.5	V
	V _M	2.7		5.5	V
H bridge drive current	I _{DR}	-200		200	mA
Logic input frequency ^{Note}	f _{IN}			100	kHz
Operating temperature range	T _A	-10		85	°C
Peak junction temperature	T _{CH (MAX)}			125	°C

Note Common to IN and EN pins

DC Characteristics (Unless otherwise specified, V_{DD} = V_M = 3.0 V, T_A = 25 °C)

Parameter	Symbol	Conditions	MIN.	TYP.	MAX.	Unit
OFF V _M pin current	I _{M (OFF)}	with all control pins at low level			10	μA
V _{DD} pin current	I _{DD}	with all control pins at low level			10	μA
High-level input current	I _{IH}	V _{IN} = V _{DD}			0.06	mA
Low-level input current	I _{IL}	V _{IN} = 0	-1.0			μA
Input pull-down resistor	R _{IND}		50		200	kΩ
High-level input voltage	V _{IH}	V _{DD} = 2.5 V to 5.5 V	V _{DD} × 0.7		V _{DD} + 0.3	V
Low-level input voltage	V _{IL}	V _{DD} = 2.5 V to 5.5 V	-0.3		V _{DD} × 0.3	V
H bridge ON resistance ^{Note}	R _{ON}	V _{DD} = V _M = 2.7 V to 5.5 V			3.0	Ω
Low-voltage malfunction prevention circuit operating voltage	V _{DDS1}	V _M = 5.0 V -10 °C ≤ T _A ≤ +85 °C	0.8		2.5	V
	V _{DDS2}	V _M = 3.0 V -10 °C ≤ T _A ≤ +85 °C	0.65		2.5	V

Note Sum of top and bottom ON resistances (@I_{DR} = 100 mA)

AC Characteristics (Unless otherwise specified, V_{DD} = V_M = 3.0 V, T_A = 25 °C)

Parameter	Symbol	Conditions	MIN.	TYP.	MAX.	Unit
H bridge output circuit turn-ON time	t _{ONH}	R _M = 20 Ω, Figure 1		0.7	20	μs
H bridge output circuit turn-OFF time	t _{OFFH}			0.2	0.5	μs
Rise time	t _r		0.1	0.4	1.0	μs
Fall time	t _f			70	200	ns

FUNCTION TABLE

Channel 1

EN ₁	IN ₁	OUT1A	OUT1B
H	L	H	L
H	H	L	H
L	L	Z	Z
L	H	Z	Z

Channel 2

EN ₂	IN ₂	OUT2A	OUT2B
H	L	H	L
H	H	L	H
L	L	Z	Z
L	H	Z	Z

Channel 3

EN ₃	IN ₃	OUT3A	OUT3B
H	L	H	L
H	H	L	H
L	L	Z	Z
L	H	Z	Z

Channel 4

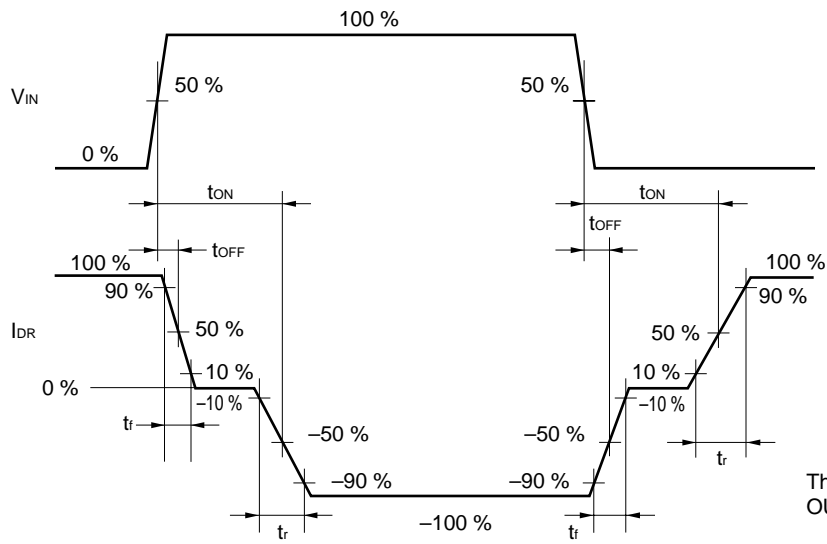
EN ₄	IN ₄	OUT4A	OUT4B
H	L	H	L
H	H	L	H
L	L	Z	Z
L	H	Z	Z

H: High level, L: Low level, Z: High impedance IN

PIN CONFIGURATION

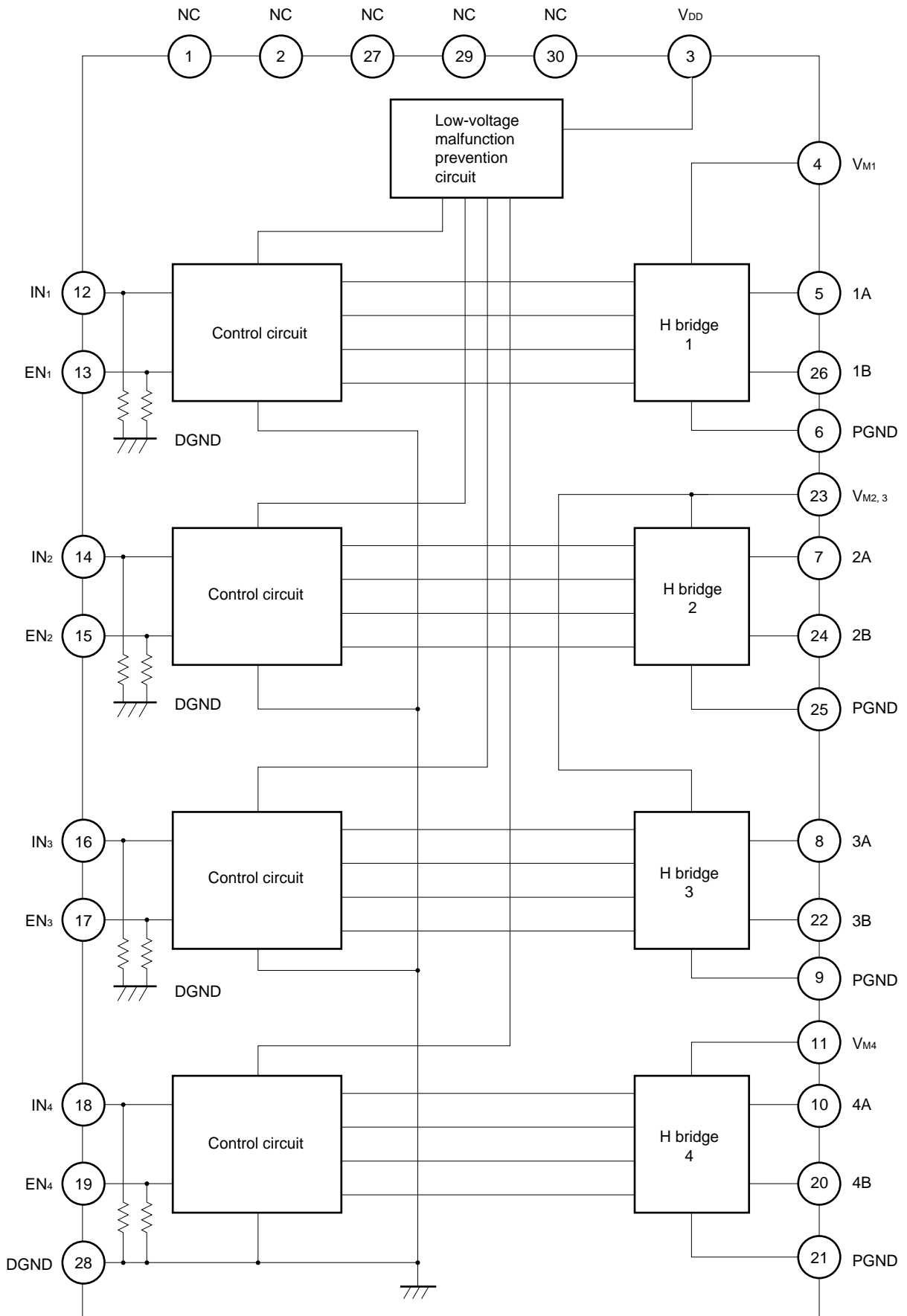
NC	1	30	NC
NC	2	29	NC
V _{DD}	3	28	DGND
V _{M1}	4	27	NC
1A	5	26	1B
PGND	6	25	PGND
2A	7	24	2B
3A	8	23	V _{M2,3}
PGND	9	22	3B
4A	10	21	PGND
V _{M4}	11	20	4B
IN ₁	12	19	EN ₄
EN ₁	13	18	IN ₄
IN ₂	14	17	EN ₃
EN ₂	15	16	IN ₃

Figure 1. Switching Characteristic Wave



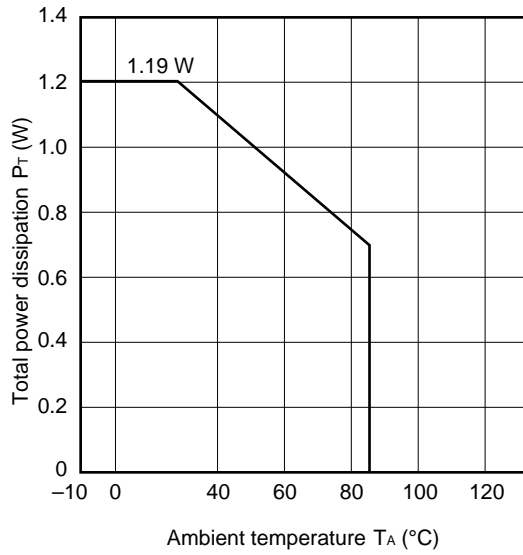
The current flowing in the direction from OUT_A to OUT_B is assumed to be (+).

BLOCK DIAGRAM

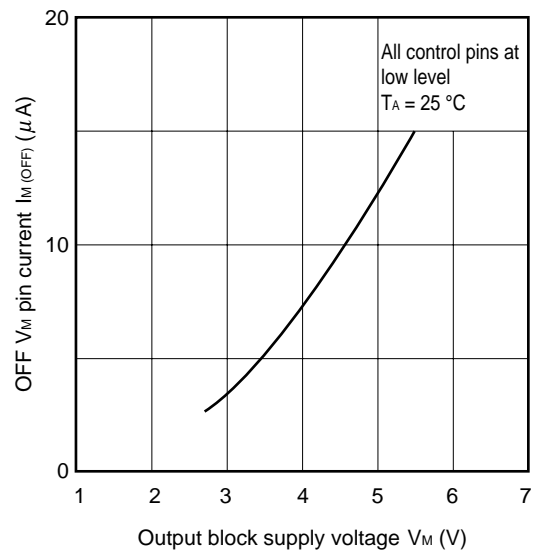


TYPICAL CHARACTERISTICS ($T_A = 25\text{ }^\circ\text{C}$)

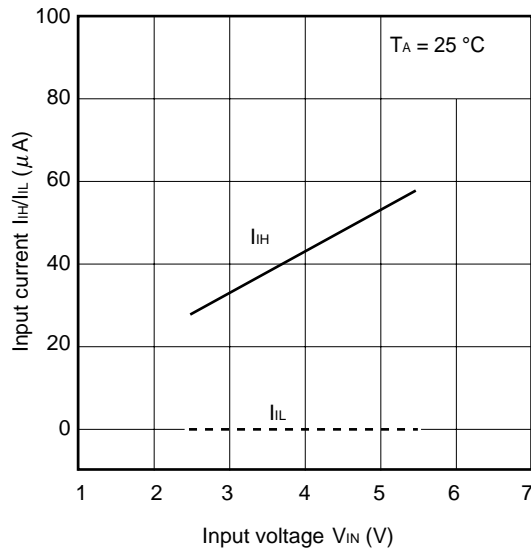
P_T vs. T_A characteristics



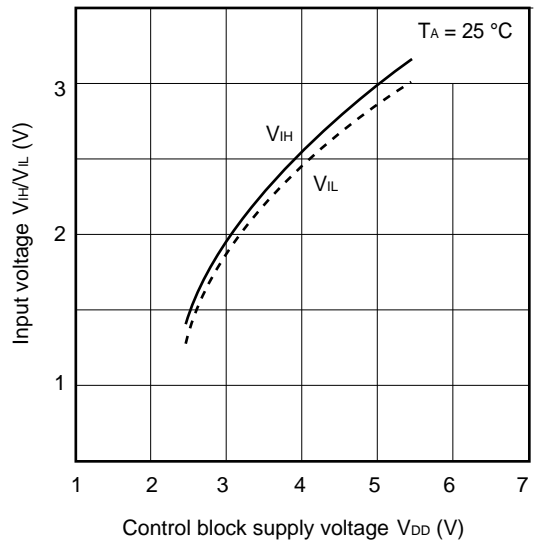
$I_{M(OFF)}$ vs. V_M characteristics



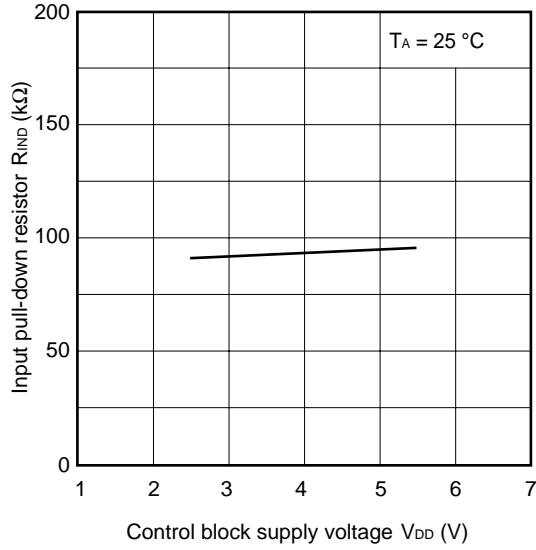
I_{IH}/I_{IL} vs. V_{IN} characteristics



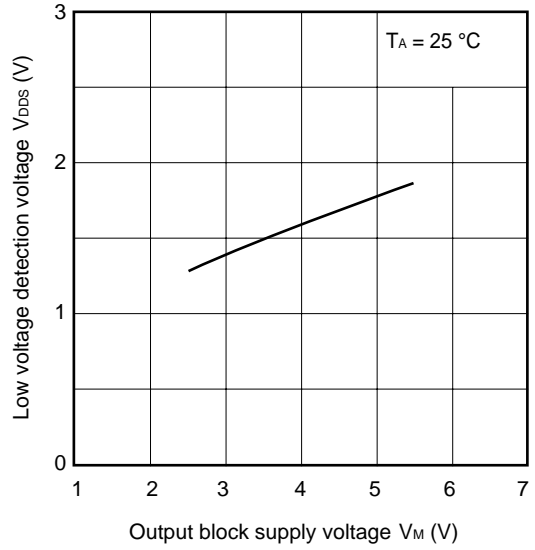
V_{IH}/V_{IL} vs. V_{DD} characteristics



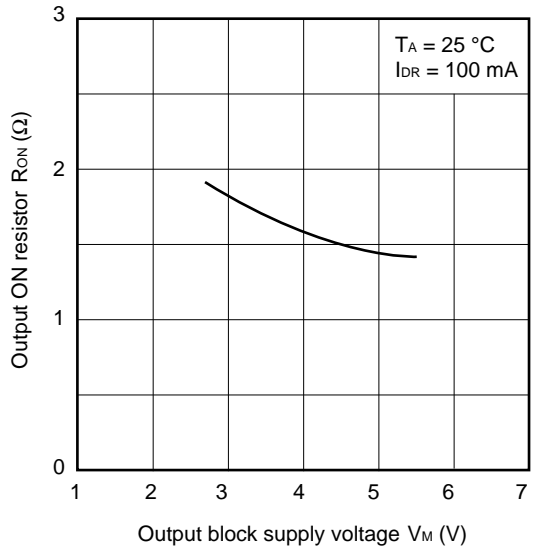
R_{IND} vs. V_{DD} characteristics



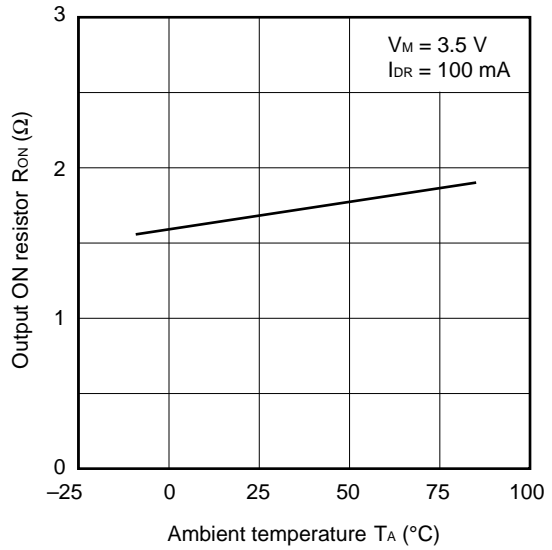
V_{DDS} vs. V_M characteristics



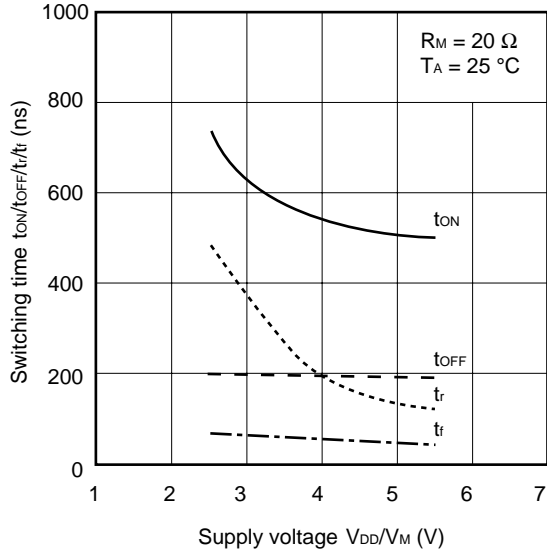
R_{ON} vs. V_M characteristics



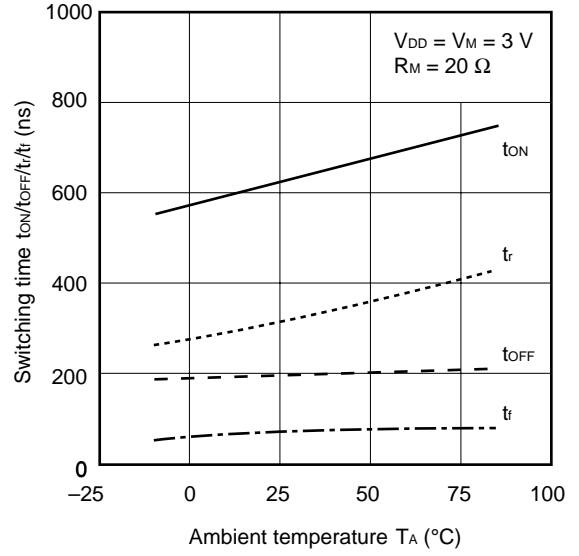
R_{ON} vs. T_A characteristics



Switching time vs. V_{DD}/V_M characteristics

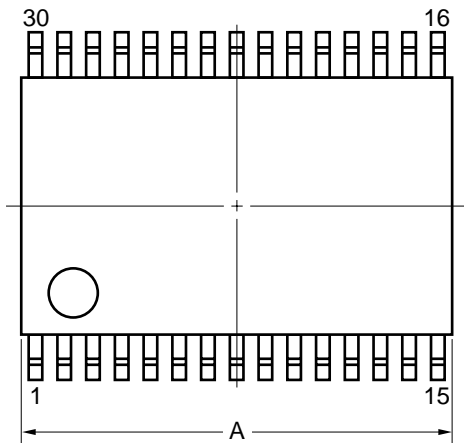


Switching time vs. T_A characteristics

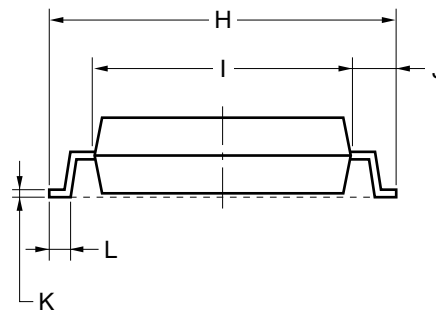
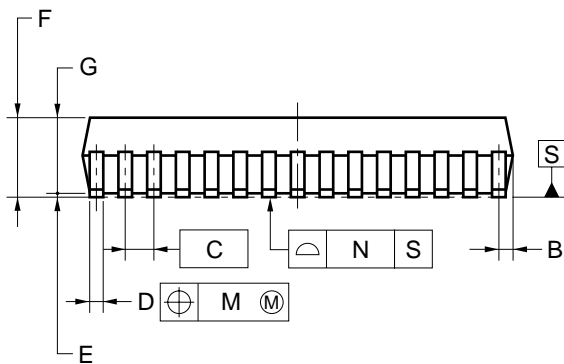
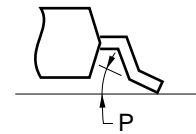


PACKAGE DIMENSION

30-PIN PLASTIC SSOP (7.62 mm (300))



detail of lead end



NOTE

Each lead centerline is located within 0.10 mm of its true position (T.P.) at maximum material condition.

ITEM	MILLIMETERS
A	9.85±0.26
B	0.51 MAX.
C	0.65 (T.P.)
D	0.32 ^{+0.08} _{-0.07}
E	0.125±0.075
F	2.0 MAX.
G	1.7±0.1
H	8.1±0.2
I	6.1±0.2
J	1.0±0.2
K	0.17 ^{+0.08} _{-0.07}
L	0.5±0.2
M	0.10
N	0.10
P	3° ^{+7°} _{-3°}

P30GS-65-300B-3

RECOMMENDED SOLDERING CONDITIONS

It is recommended to solder this product under the conditions described below.

For soldering methods and conditions other than those listed below, consult NEC.

For the details of the recommended soldering conditions of this type, refer to the **Semiconductor Device Mounting Technology Manual (C10535E)**.

Soldering Method	Soldering Conditions	Symbol of Recommended Soldering
Infrared reflow	Peak package temperature: 235 °C, Time: 30 seconds MAX. (210 °C MIN.), Number of times: 3 MAX., Number of days: None ^{Note} , Flux: Rosin-based flux with little chlorine content (chlorine: 0.2 Wt% MAX.) is recommended.	IR35-00-3
VPS	Peak package temperature: 215 °C, Time: 40 seconds MAX. (200 °C MIN.), (200 °C MIN.), Number of times: 2 MAX., Number of days: None ^{Note} , Flux: Rosin-based flux with little chlorine content (chlorine: 0.2 Wt% MAX.) is recommended.	VP15-00-2
Wave soldering	Soldering bath temperature: 260 °C MAX., Time: 10 seconds MAX., Preheating temperature: 120 °C MAX., Number of times: 1, Flux: Rosin-based flux with little chlorine content (chlorine: 0.2 Wt% MAX.) is recommended.	WS60-00-1

Note The number of storage days at 25 °C, 65% RH after the dry pack has been opened

Caution Do not use two or more soldering methods in combination.

- **The information in this document is current as of February, 2002. The information is subject to change without notice. For actual design-in, refer to the latest publications of NEC's data sheets or data books, etc., for the most up-to-date specifications of NEC semiconductor products. Not all products and/or types are available in every country. Please check with an NEC sales representative for availability and additional information.**
- No part of this document may be copied or reproduced in any form or by any means without prior written consent of NEC. NEC assumes no responsibility for any errors that may appear in this document.
- NEC does not assume any liability for infringement of patents, copyrights or other intellectual property rights of third parties by or arising from the use of NEC semiconductor products listed in this document or any other liability arising from the use of such products. No license, express, implied or otherwise, is granted under any patents, copyrights or other intellectual property rights of NEC or others.
- Descriptions of circuits, software and other related information in this document are provided for illustrative purposes in semiconductor product operation and application examples. The incorporation of these circuits, software and information in the design of customer's equipment shall be done under the full responsibility of customer. NEC assumes no responsibility for any losses incurred by customers or third parties arising from the use of these circuits, software and information.
- While NEC endeavours to enhance the quality, reliability and safety of NEC semiconductor products, customers agree and acknowledge that the possibility of defects thereof cannot be eliminated entirely. To minimize risks of damage to property or injury (including death) to persons arising from defects in NEC semiconductor products, customers must incorporate sufficient safety measures in their design, such as redundancy, fire-containment, and anti-failure features.
- NEC semiconductor products are classified into the following three quality grades:
"Standard", "Special" and "Specific". The "Specific" quality grade applies only to semiconductor products developed based on a customer-designated "quality assurance program" for a specific application. The recommended applications of a semiconductor product depend on its quality grade, as indicated below. Customers must check the quality grade of each semiconductor product before using it in a particular application.
 - "Standard": Computers, office equipment, communications equipment, test and measurement equipment, audio and visual equipment, home electronic appliances, machine tools, personal electronic equipment and industrial robots
 - "Special": Transportation equipment (automobiles, trains, ships, etc.), traffic control systems, anti-disaster systems, anti-crime systems, safety equipment and medical equipment (not specifically designed for life support)
 - "Specific": Aircraft, aerospace equipment, submersible repeaters, nuclear reactor control systems, life support systems and medical equipment for life support, etc.

The quality grade of NEC semiconductor products is "Standard" unless otherwise expressly specified in NEC's data sheets or data books, etc. If customers wish to use NEC semiconductor products in applications not intended by NEC, they must contact an NEC sales representative in advance to determine NEC's willingness to support a given application.

(Note)

- (1) "NEC" as used in this statement means NEC Corporation and also includes its majority-owned subsidiaries.
- (2) "NEC semiconductor products" means any semiconductor product developed or manufactured by or for NEC (as defined above).