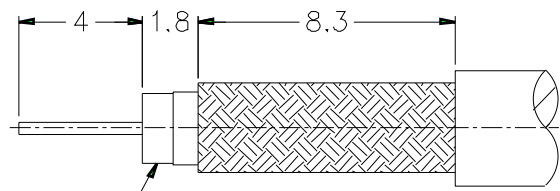


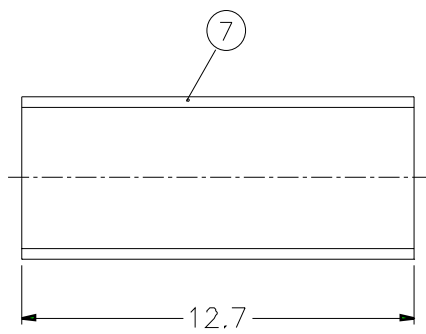
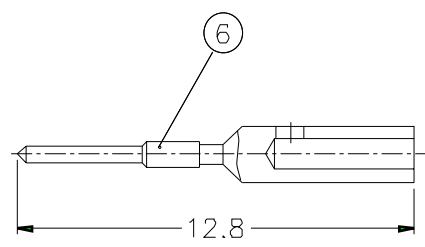
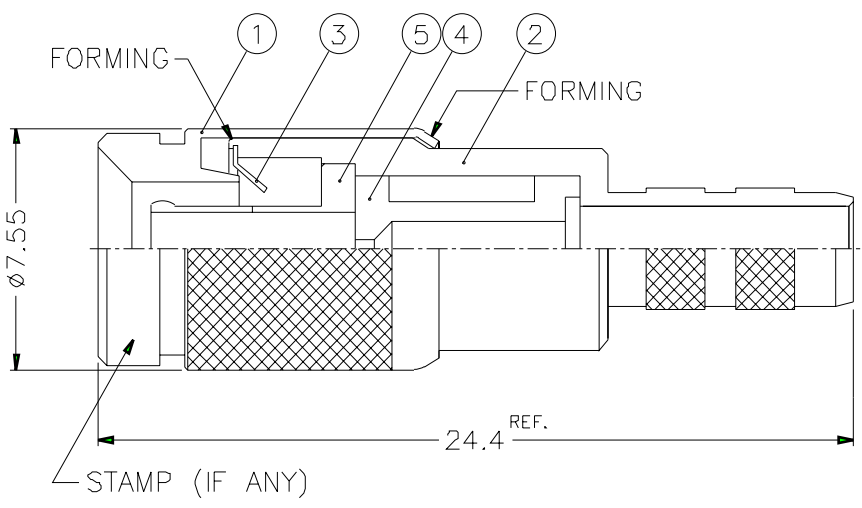
1 2 3 4 5 6 7 8

REVISIONS		
ISS	ZONE	DESCRIPTION\PER REQUEST\DATE



REMOVE FOIL 1mm MIN.

RECOMMENDED
CABLE STRIPPING DIM'S



- FERRULE CRIMPING TOOLS P/N
227-944 (M22520/5-01)
227-1221-19B (M22520/5-19B) HEX: 4.52
- INNER CONTACT CRIMPING TOOL P/N
615717 (M22520/2-01) OR AFM8 ADJUST TO 5

NO.	DESCRIPTION	MATERIAL	FINISH	Q'TY	DRAWING NO.
7	FERRULE	COPPER	NICKEL	1	FR-51/445X127
6	CONTACT PIN	BRASS	GOLD	1	CP10AAH02A
5	OUT CONTACT	BECU	GOLD	1	1231121D1-6-B
4	INSULATOR	PTFE	NATURAL	1	NS00AHQ03A
3	SPRING	BECU	NATURAL	1	123-PLUG-SPR
2	BODY	BRASS	NICKEL	1	
1	SHELL	BRASS	NICKEL	1	SH10AAC01A

DIMENSIONS ARE IN MILLIMETERS			
SCALE	4/1	ISSUE	A1

PART NO.	1231121D1-E16	
APPROVED	DATE	08-09-02'
CHECKED	DATE	08-09-02'
DRAWN	DATE	08-09-02'
FILE NO.	F:\ND\10\1121\ERA\37\7F\MN	

Amphenol RF	
TITLE	1.0/2.3 PUSH-PULL CRIMP PLUG (FOR FLEX-3/75 CABLE)
DRAWING NO.	101121ERA37MN7F
ITEM NO.	101121ERA37MN7F

1 2 3 4 5 6 7 8

F
E
D
C
B
A

F
E
D
C
B
A