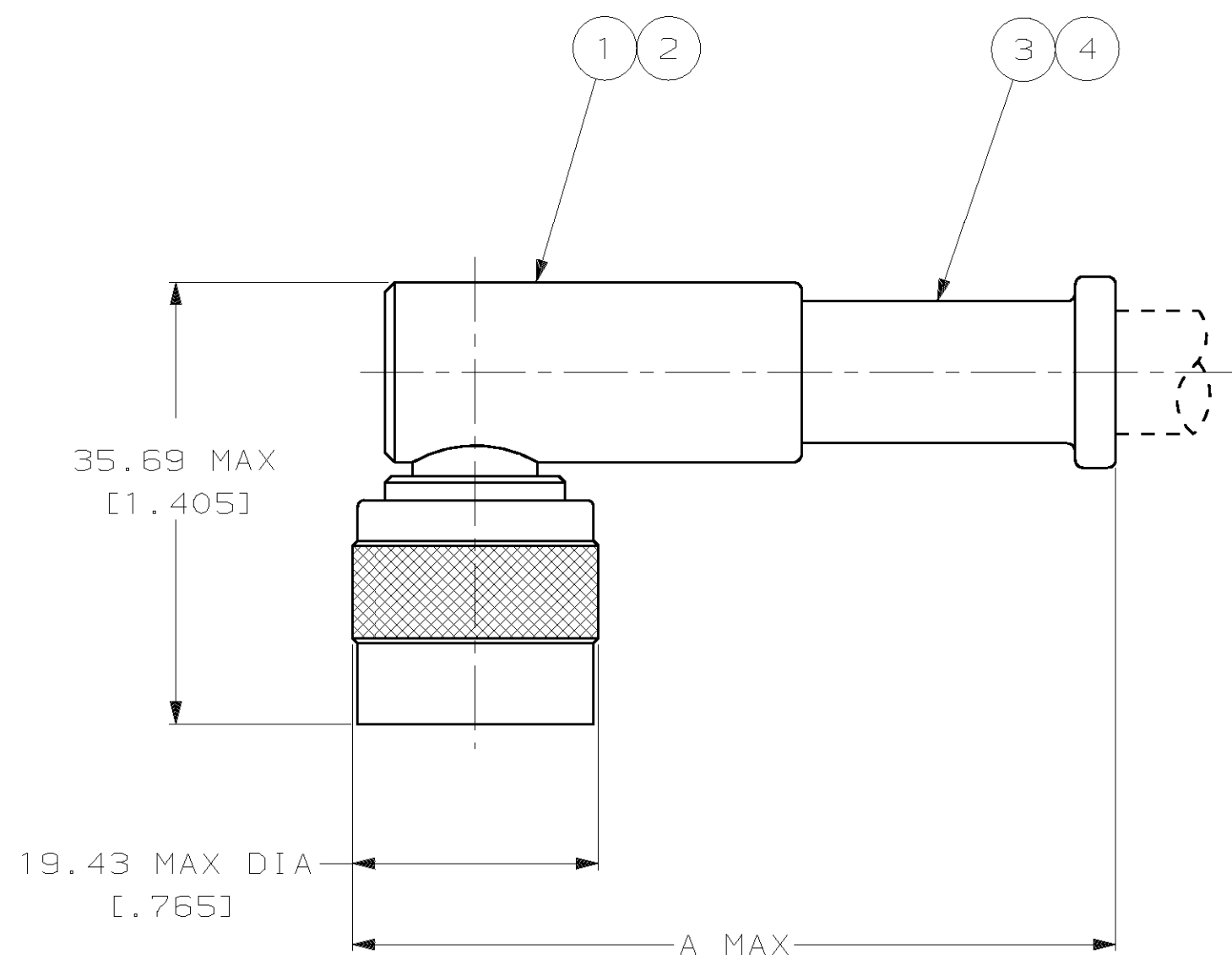
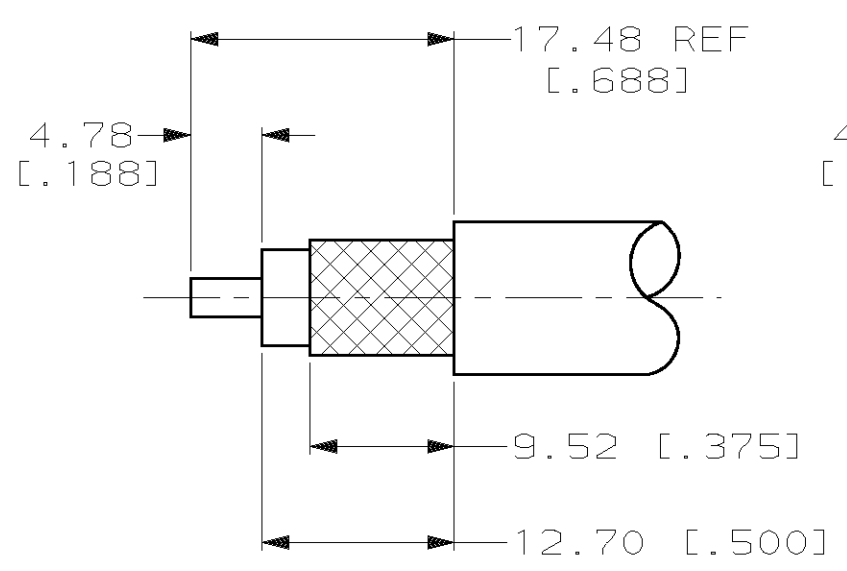


THIS DRAWING IS UNPUBLISHED. RELEASED FOR PUBLICATION
 © COPYRIGHT 19 BY AMP INCORPORATED. ALL INTERNATIONAL RIGHTS RESERVED.

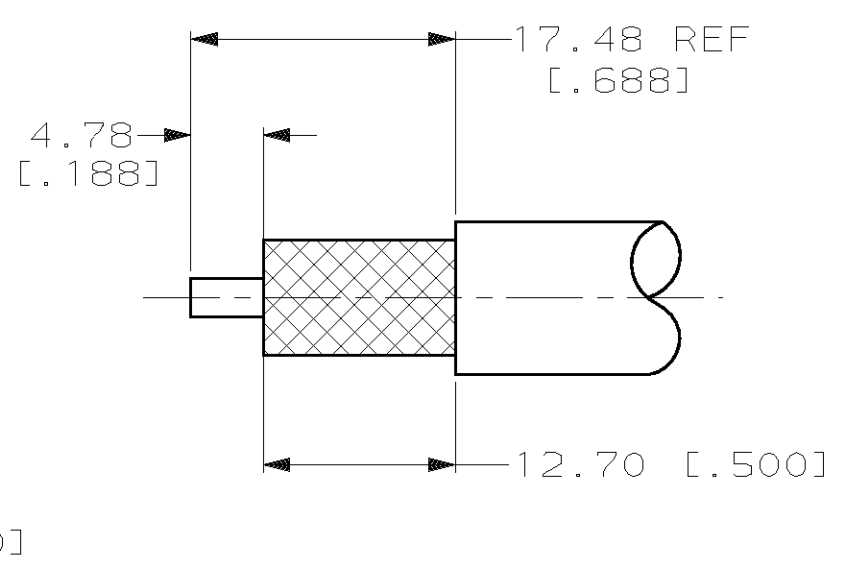
LOC		DIST		P		F		REVISIONS		DATE	APPD
AJ	16							ZONE	LTR	DESCRIPTION	
								E		0B5 -8 PER 0E10-0106-99	04JAN00
											MO



1. SEE I.S. 2259-5



VIEW X



VIEW Y

RECOMMENDED STRIP LENGTH

Y	61.90 [2.437]	225411-9 AMP	220015-1	TIMES CABLE #6684	332022	1-331987-3	1-51704-0	225172-1	225411-9
Y	61.90 [2.437]	225411-8 AMP	220015-1	OBSOLETE	332022	225490-1	1-51704-0	225172-1	225411-8
X	61.11 [2.406]	225411-6 AMP	220015-3	MICRODOT 250-4172 & 250-4208	225908-2	225612-2	51704-2	225248-1	225411-6
				OBSOLETE					225411-5
Y	61.90 [2.437]	225411-3 AMP	220015-1	RG-225/U	332022	331987	1-51704-0	225172-1	225411-3
Y	61.90 [2.437]	225411-1 AMP	220015-1	RG-9/U, 9A/U, 9B/U, & 214/U	332022	331987	51704-2	225172-1	225411-1

VIEW	A	STAMPING	CRIMP TOOL	FOR USE WITH CABLE	④ SEAL QTY=1	③ FERRULE QTY=1	② CONTACT QTY=1	① PLUG ASSY RTANG QTY=1	PART NO
------	---	----------	------------	--------------------	-----------------	--------------------	--------------------	-------------------------------	---------

DO NOT SCALE PRINT. UNLESS SPECIFIED DIMENSIONS IN mm [INCHES] TOLERANCES ON: 2 PLC DEC ± 0.41 [.016] 3 PLC DEC ± - ANGLES ± -		DR 2-14-91 M. SNEED		AMP Incorporated Harrisburg, PA 17105-3608	
MATERIAL		CHK 2-14-91 R. HENRY			
FINISH		APPD 2-14-91 R. HENRY		NAME	
-		APPD 2-14-91 M. SNEED		PLUG, RIGHT ANGLE, SERIES C	
-		PRODUCT SPEC		SIZE	
-		APPLICATION SPEC		CAGE CODE	
-		-		DRAWING NO	
-		WEIGHT 2.5 OZ		③ 00779	
-		-		SCALE 2:1	
-		-		SHEET 1 OF 1	