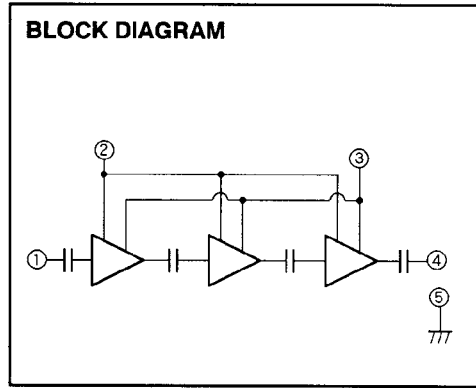
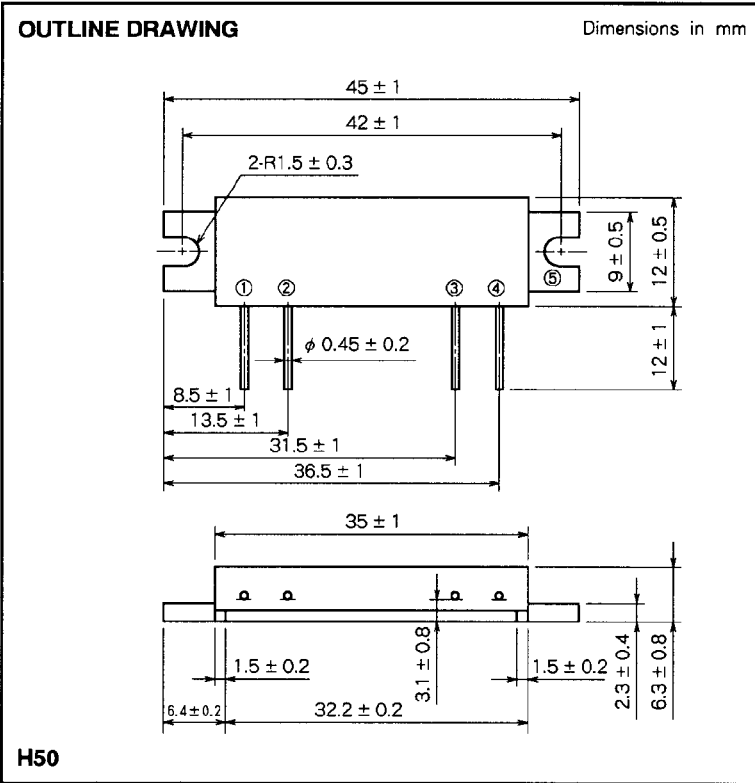


M68711

889-915MHz, 9.3V, 3.8W, FM PORTABLE RADIO



- PIN :
- ① Pin : RF INPUT
 - ② V_{GG} : GATE BIAS SUPPLY
 - ③ V_{DD} : DRAIN BIAS SUPPLY
 - ④ P_o : RF OUTPUT
 - ⑤ GND : FIN

ABSOLUTE MAXIMUM RATINGS (T_c = 25°C unless otherwise noted)

Symbol	Parameter	Conditions	Ratings	Unit
V _{DD}	Supply voltage	V _{GG} ≤ 5V, Z _G = Z _L = 50Ω	12	V
V _{GG}	Gate bias voltage		5.5	V
P _{in}	Input power	f = 889 to 915MHz, Z _G = Z _L = 50Ω	6	mW
P _o	Output power	f = 889 to 915MHz, Z _G = Z _L = 50Ω	6	W
T _{c(OP)}	Operation case temperature	f = 889 to 915MHz, Z _G = Z _L = 50Ω	- 30 to 100	°C
T _{stg}	Storage temperature		- 40 to 100	°C

Note. Above parameters are guaranteed independently.

ELECTRICAL CHARACTERISTICS (T_c = 25°C, Z_G = Z_L = 50Ω, unless otherwise noted)

Symbol	Parameter	Test conditions	Limits		Unit
			Min	Max	
f	Frequency range		889	915	MHz
P _o	Output power	V _{DD} = 9.3V	3.8		W
2f _o	2nd. harmonic	V _{GG} = 5V		- 30	dBc
ρ _{in}	Input VSWR	P _{in} = 1mW		3	-
η _T	Total efficiency	P _o = 3.8W(V _{GG} Adjust), V _{DD} = 9.3V, P _{in} = 1mW	30		%
-	Stability	Z _G = 50Ω, V _{DD} = 5 to 9.3V, Load VSWR < 3 : 1	No parasitic oscillation		-
-	Load VSWR tolerance	V _{DD} = 12V, P _{in} = 1mW, P _o = 3.8W(V _{GG} Adjust), Z _L = 20 : 1	No degradation or destroy		-

Note : Above parameters, ratings, limits and conditions are subject to change.

TYPICAL PERFORMANCE DATA

