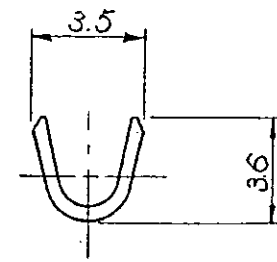
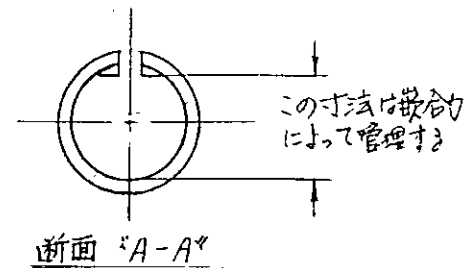
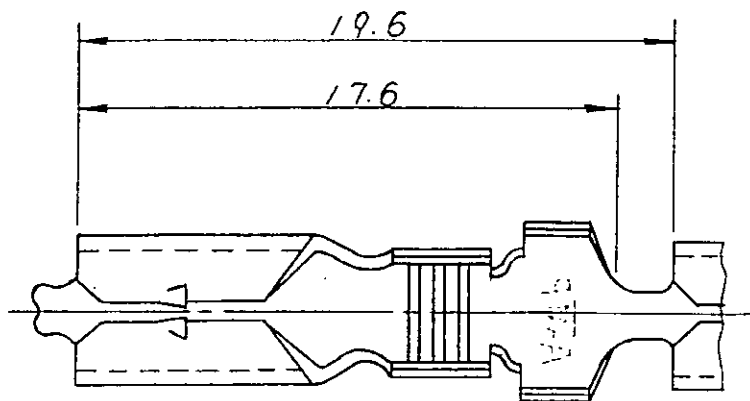
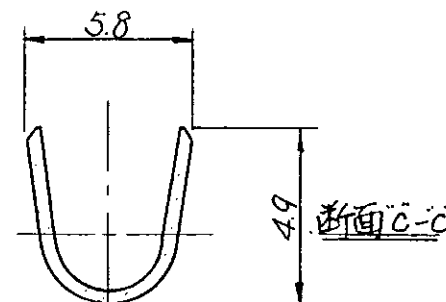


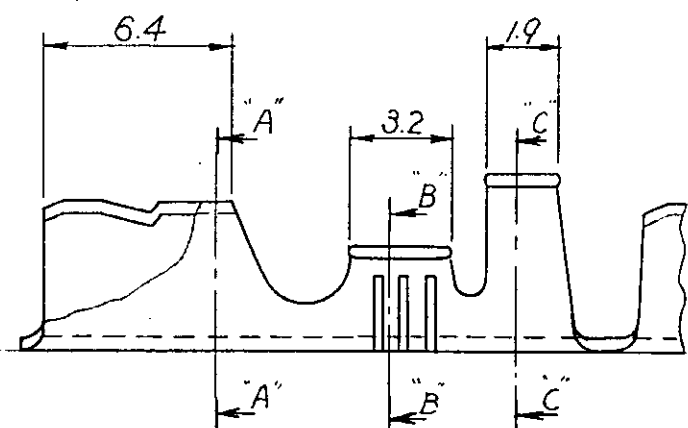
LOC	DST	REVISIONS						
		P	LTR	DESCRIPTION	ECN	DATE	DWN	APVD
J	-	R		REDRAWN WITH CHANGE	FJΦΦ-4993-69	16 JUL 96	T.H.	FT.N



断面 "B-B"



断面 "C-C"



3-170003-6	7000	108-5003	電鍍金めっき PAST-TIN
170003-8	7000	108-5003	7°リテイ
170003-6	7000	108-5003 準規	△ 酸洗処理
2-170003-5	24000	108-5003	△
1- -5	25000	-5003	△
1- -4	24000	-5003	電気錫めき
-5	170021-3	-5003	△
-4	170021-2	-5003	電気錫めき
170003-8	7000	108-5003	△
端子型番	L/P 型番	1リ-ル当り数量	製品規格番号

注: △. 初回引抜き力: 1.5~4.5 kg (嵌合相手 170002-4)

△. ストレス除去処理

処理法により外観が異なります。  
 不活性ガス加熱方式.....無光沢  
 大気加熱方式.....光沢

NOTES: △. 1st EXTRACTION FORCE: 1.5~4.5 kg (APPLICABLE CONTACT 170002-4)

△. STRESS RELIEVING

FINISH IS SUBJECT TO CHANGE BY THE TYPE OF STRESS RELIEVING PROCESS

INERT GAS FURNACE.....MATTE  
 ATMOSPHERIC FURNACE FOLLOWED BY ACID PICKLE.....BRIGHT

THIS DRAWING IS A CONTROLLED DOCUMENT FOR AMP INCORPORATED. IT IS SUBJECT TO CHANGE AND THE CONTROLLING ENGINEERING ORGANIZATION SHOULD BE CONTACTED FOR THE LATEST REVISION.		DWN T. Hatano 16 JUL 96	WIRE RANGE 社会電線断面換 0.50~2.27 mm <sup>2</sup> (AWG #20-#14)		INSULATION DIA 被覆外径 2.5~3.8 mm (100~150 IN)	
DIMENSIONS 単位: 概 mm		CHK In. Sagaki 18 JUL 96	AMP		日本エー・エム・ピー株式会社 Kawasaki, Japan	
TOLERANCES UNLESS OTHERWISE SPECIFIED 一般公差 30% ±0.25 100% ±0.3 ANGLE ±0.3° ±0.4 ±1°		APP 18 JUL 96	NAME 名称 (Φ5 SHUR PLUG RECEPTACLE)		φ5 1/2 - 7° 7/16" リセ 7° 7/16"	
MATERIAL 材料 (BRASS THK0.4) 黄銅板厚0.4		PRODUCT SPEC 108-5003	SIZE A3		DRAWING NO C-170003	
FINISH 仕上 表参照 (SEE TABLE)		WEIGHT	CAGE CODE 00779		SHEET 1 OF 1	
CUSTOMER DRAWING		SCALE		REV R		