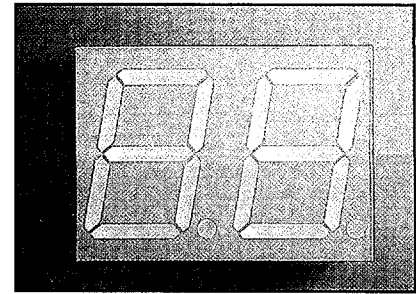
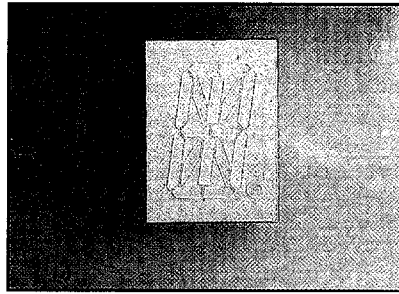


APPLICATIONS

- Instrument Panels
- Test Equipment
- Meter Displays

OPTIONS AVAILABLE

- Right Angle Pins (Tooling Applied)
- Bicolor Red/Green
- Face & Segment Colors
- Graded Groups for Color/Intensity (See Page 5)



PRODUCT SELECTION

.80" Alpha-Numeric Displays, RHD						
Lumex Part Nbr	λ_p (nm)	Iv, μ Cd @10mA(TYP)	Color	Comm Pin	Face Seg	Fig Nbr
LDS-A834RI	625	5000	RED	(+)	Grey White	29
LDS-C834RI	625	5000	RED	(-)	Grey White	29
LDS-A836RI	660	12000	SUP-RED	(+)	Grey White	29
LDS-C836RI	660	12000	SUP-RED	(-)	Grey White	29
LDS-A832RI	565	3000	GREEN	(+)	Grey White	29
LDS-C832RI	565	3000	GREEN	(-)	Grey White	29
LDS-A833RI	585	3000	YELLOW	(+)	Grey White	29
LDS-C833RI	585	3000	YELLOW	(-)	Grey White	29

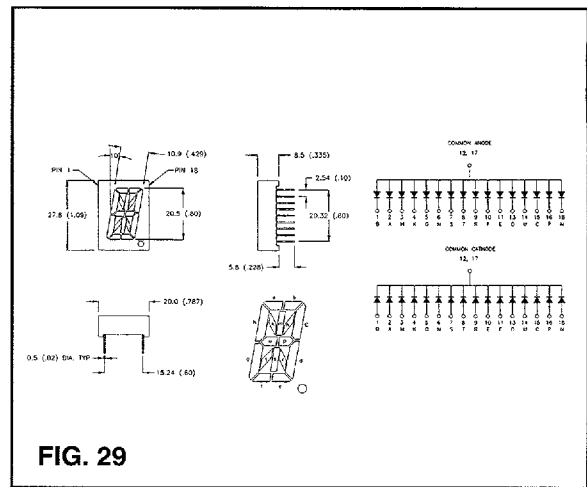


FIG. 29

PRODUCT SELECTION

.80" Dual Numeric Displays, RHD						
Lumex Part Nbr	λ_p (nm)	Iv, μ Cd @10mA(TYP)	Color	Comm Pin	Face Seg	Fig Nbr
LDD-A814RI	625	5000	RED	(+)	Grey White	30
LDD-C814RI	625	5000	RED	(-)	Grey White	30
LDD-A816RI	660	12000	SUP-RED	(+)	Grey White	30
LDD-C816RI	660	12000	SUP-RED	(-)	Grey White	30
LDD-A812RI	565	3000	GREEN	(+)	Grey White	30
LDD-C812RI	565	3000	GREEN	(-)	Grey White	30
LDD-A813RI	585	3000	YELLOW	(+)	Grey White	30
LDD-C813RI	585	3000	YELLOW	(-)	Grey White	30

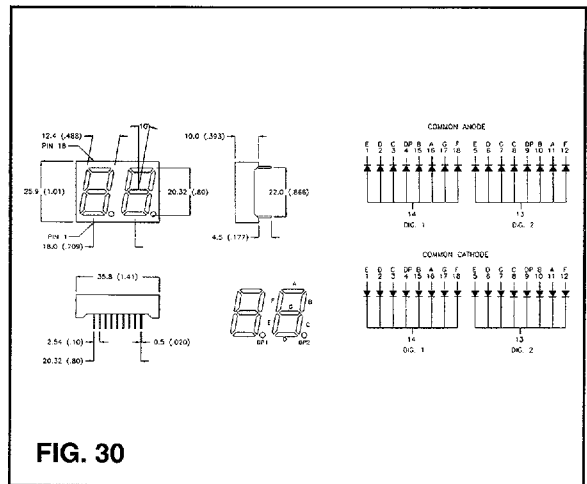


FIG. 30

For Design Assistance Fax



1-800-944-2790