

PRODUCT DATA DRAWING

REVISION HISTORY			
REV	DESCRIPTION	DATE	APPROVED
A	REV. DCN 33116	06/05	CCC

MATERIAL:

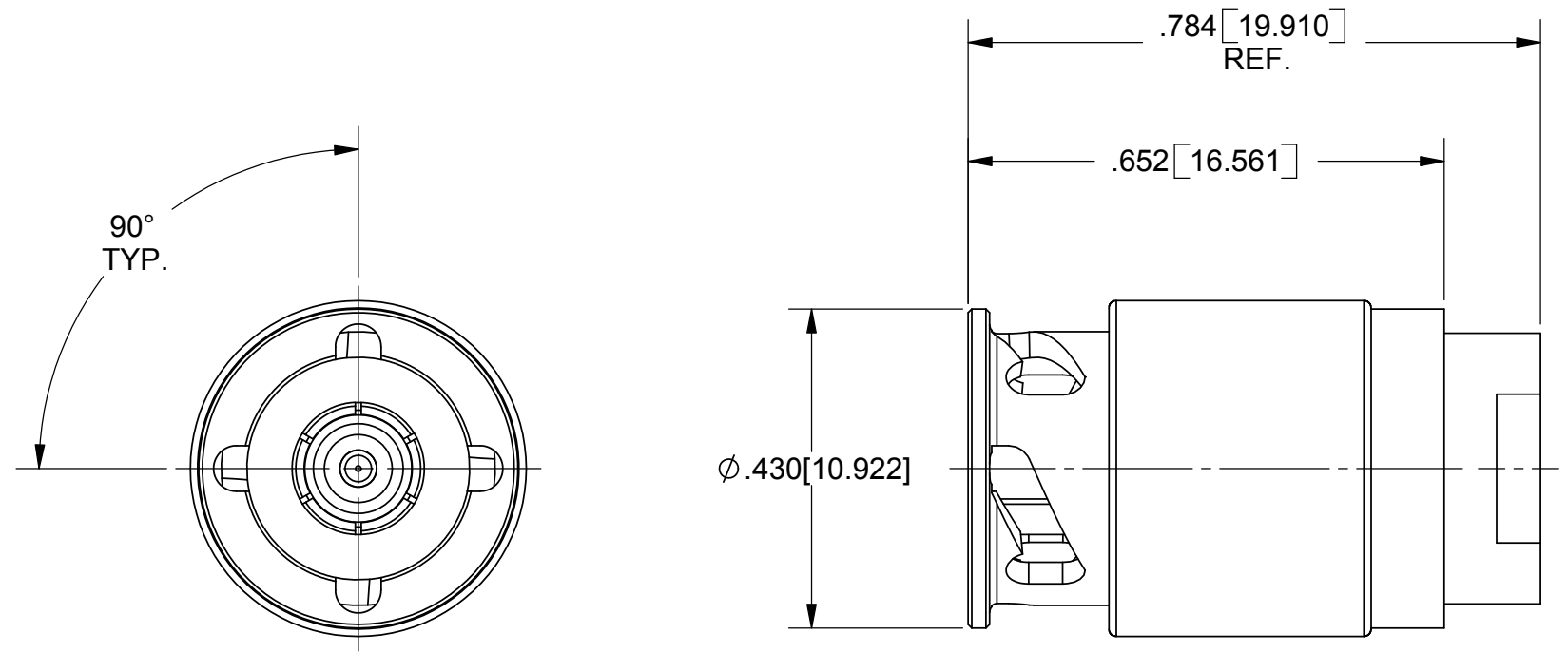
BODY, CAP, WASHERS & COUPLING NUT:	STAINLESS STEEL PER AMS-5640, ALLOY UNS S30300, TYPE 303. COND. A
SPRING:	STAINLESS STEEL 17-7 PH
CONTACTS & LOCK RING:	BERYLLIUM COPPER PER ASTM B196, ALLOY UNS C17300, TD04
SLEEVE:	BRASS PER ASTM B16, ALLOY UNS C36000
INSULATOR:	PTFE PER ASTM D1710, TYPE I, GRADE 1, CLASS B
GASKET:	SILICONE RUBBER PER A-A-59588, CLASS 2B, GRADE 50/60
BELLOWS SPRING:	ELECTRO-DEPOSITED NICKEL
RESISTOR ELEMENT:	TANTALUM NITRIDE

FINISH:

BODY, CAP, WASHERS & COUPLING NUT:	PASSIVATED PER AMS-QQ-P-35, TYPE II
CONTACTS, SLEEVE & SET SCREW:	GOLD PER ASTM B488, TYPE I, CODE C, CLASS 1; OVER NICKEL PER AMS-QQ-N-290, CLASS 1, .00005" MIN.

PERFORMANCE

IMPEDANCE:	50 OHMS
FREQ. RANGE:	DC TO 12.4 GHz
VSWR:	1.25:1 DC TO 12.4 GHz



MATERIAL: SEE NOTES	DIMENSIONS ARE IN INCHES TOLERANCES: FRACTIONAL: ±1/64 ANGULAR: X° ±1'0" X*X' ±15' DECIMAL: .X ±.030 .XX ±.010 .XXX ±.005 INTERPRET DIMENSIONS AND TOLERANCES PER ASME Y14.5M - 1994	UNLESS OTHERWISE SPECIFIED 1) ALL DIMENSIONS ARE IN INCHES (MILLIMETERS) 2) ALL DIMENSIONS ARE AFTER PLATING. 3) BREAK CORNERS & EDGES .005 R. MAX. 4) CHAM. 1ST & LAST THREADS. 5) SURFACE ROUGHNESS 63 MIL-STD-10. 6) DIA.'S ON COMMON CENTERS TO BE CONCENTRIC WITHIN T.I.R. 7) REMOVE ALL BURRS	SV Microwave, Inc. 2400 Centrepark West Drive, Suite 100 West Palm Beach, FL 33409 TITLE: ZMA (90° TYP.) PLUG TERMINATION
FINISH: SEE NOTES			
SURFACE AREA: N/A	THIRD ANGLE PROJECTION	SCALE: 4:1	SHEET 1 OF 1