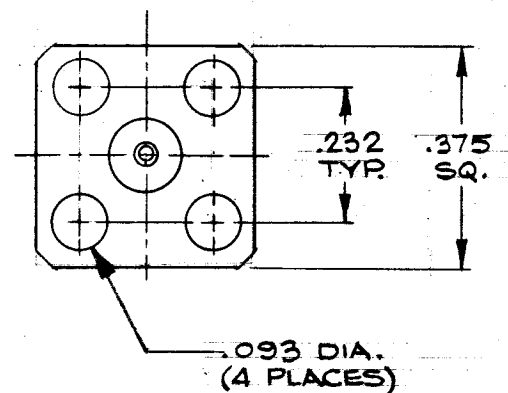
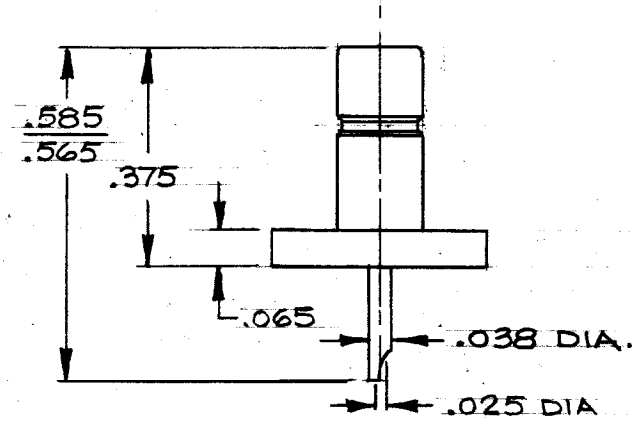


NOTES:

1. MATING: Interface dimensions per Mil-39012/SMB Series & S/M MD-121.
2. MATERIALS:  
 ALL METAL PARTS:..Brass per QQ-B-626, 1/2 HD. Alloy 360.  
 DIELECTRIC.....Teflon per Mil-P-19468 & L-P-403 Type 1.
3. FINISHES:  
 ALL METAL PARTS..Gold per Mil-G-45204, Type 1, Grade C, Class 1; over Copper per Mil-C-14550, Class 4.



SYM	DESCRIPTION	DATE	APPR.	UNLESS OTHERWISE SPECIFIED 1. ALL DIMENSIONS ARE AFTER PLATING 2. BREAK ALL CORNERS & EDGES .005 R MAX. 3. CHAMFER 1ST & LAST THREADS 45° 4. SURFACE ROUGHNESS 63 MIL-STD-18 5. DIAMETERS ON COMMON CENTERS TO BE CONCENTRIC WITHIN T.I.R. 6. REMOVE ALL BURRS	<b>SOLITRON/MICROWAVE</b>		REF.
					PORT SALERNO, FLORIDA		ENGINEERING DATA DRAWING
-	REL.DCNE-10856	6/87	JL		MATERIAL		TITLE
					FINISH		SMB STR'T JACK
					AREA		4-HOLE MOUNT
					SCALE		WITH SOLDER POT
					CODE IDENT. NO.	SIZE	DRAWING NO.
					95077	A	2350-0005
					CHECKED RA DATE 6-2-87		SHEET 1 OF 2
					APPROVED JL DATE 6/2/87		

**ENG. FILE COPY**

S/M DESIGN STANDARDS

DRAWING NO.

**2350-0005**

REQUIREMENTS	RATINGS	REQUIREMENTS	RATINGS
Nominal Impedance (ohms)	50	Vibration	MIL-STD-202 Method 204 Cond. D (20G's)
Frequency Range (ghz)	DC - 4	Shock	MIL-STD-202 Method 213 Cond. I (100G's)
Voltage Rating (max. vrms)	335	Temperature Cycling	MIL-STD-202 Method 107 - Cond. B (-65°C to + 200° C)
Temperature Rating (degrees centigrade)	-65° to + 165°	Corrosion	MIL-STD-202 Method 101 Cond. B (48 Hrs.)
VSWR (max.)	N/A xFGHz	Moisture Resistance	MIL-STD-202 Method 106 Less Step 7b
Insertion Loss (dB max.)	N/A $x\sqrt{FGHz}$	Barometric Pressure (Altitude)	MIL-STD-202 Method 105 - Cond. C (70,000 ft) (250 vrms)
RF Leakage (min. dB down)	N/A dB-FGHz		
RF High Potential (max. vrms)	670 at 5MHz		
Dielectric Withstanding Voltage (max. vrms)	1000		
Insulation Resistance (min. megohms)	5000		
Contact Resistance: Center Contact (max. milliohms) Outer Contact (max. milliohms)	6.0 1.0		
Center Contact Axial Forces: Insertion (max. ounces) Withdrawal (min. ounces)	N/A		
Connector Durability (min. cycles)	500		
Connector Engagement & Disengagement (max. lbs.)	14.0 Axial Force		
		CAPTIVATION: Center Contact Min. Axial Force	6 lbs.

REMARKS: 1) Recommended Mating Torque: N/A

TITLE: **SMB STRAIGHT JACK  
4-HOLE MOUNT WITH  
SOLDER POT**

**SOLITRON/MICROWAVE**  
PORT SALERNO, FLORIDA

SHT. 2 of 2

DRAWING NO.

**2350-0005**

REV.

-