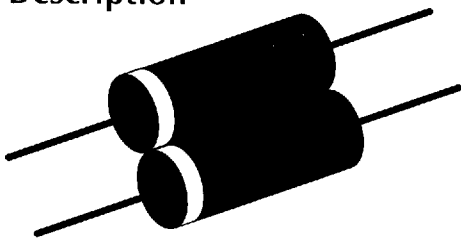


# DA30-60 Series

## DA30...60 Series

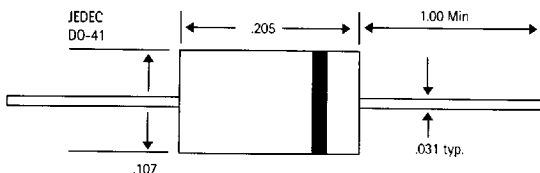
### 100 U AMP BI-DIRECTIONAL DIAC

#### Description



#### Mechanical Details

all dimensions in inches



#### Features:

Glass passivated, three layer, for triggering thyristors

Low breakover current at breakover voltage

For lamp dimming, heat control and motor control

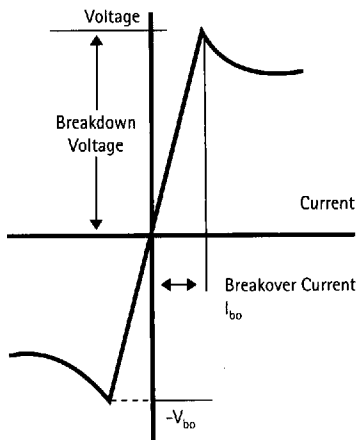
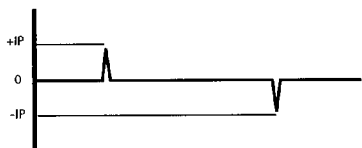
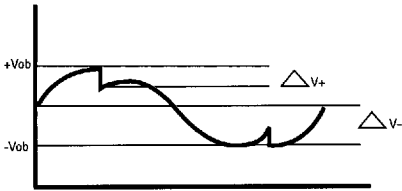
#### Maximum Ratings

(@ 25°C)

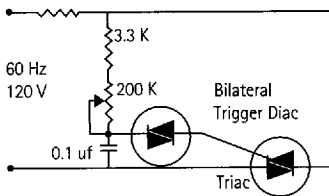
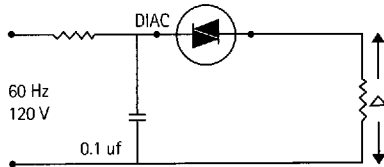
	DA30	DA40	DA60
Breakover voltage - Min	28V	35V	56V
Breakover voltage - Typ	32V	40V	60V
Breakover voltage - Max	36V	45V	70V
Breakover voltage symmetry	3	3	4 V Max
Dynamic Breakover Voltage	5	5	10 V Max
Breakover Current	100	100	100
Peak pulse current for 10uS, 120PPS, Ta = <40°C	2	2	1.8 A Max

# DA30-60 Series

Circuit for Output Voltage @ 25 C



Typical Full Wave Diac-Triac Phase Control



# DA30-60 Series